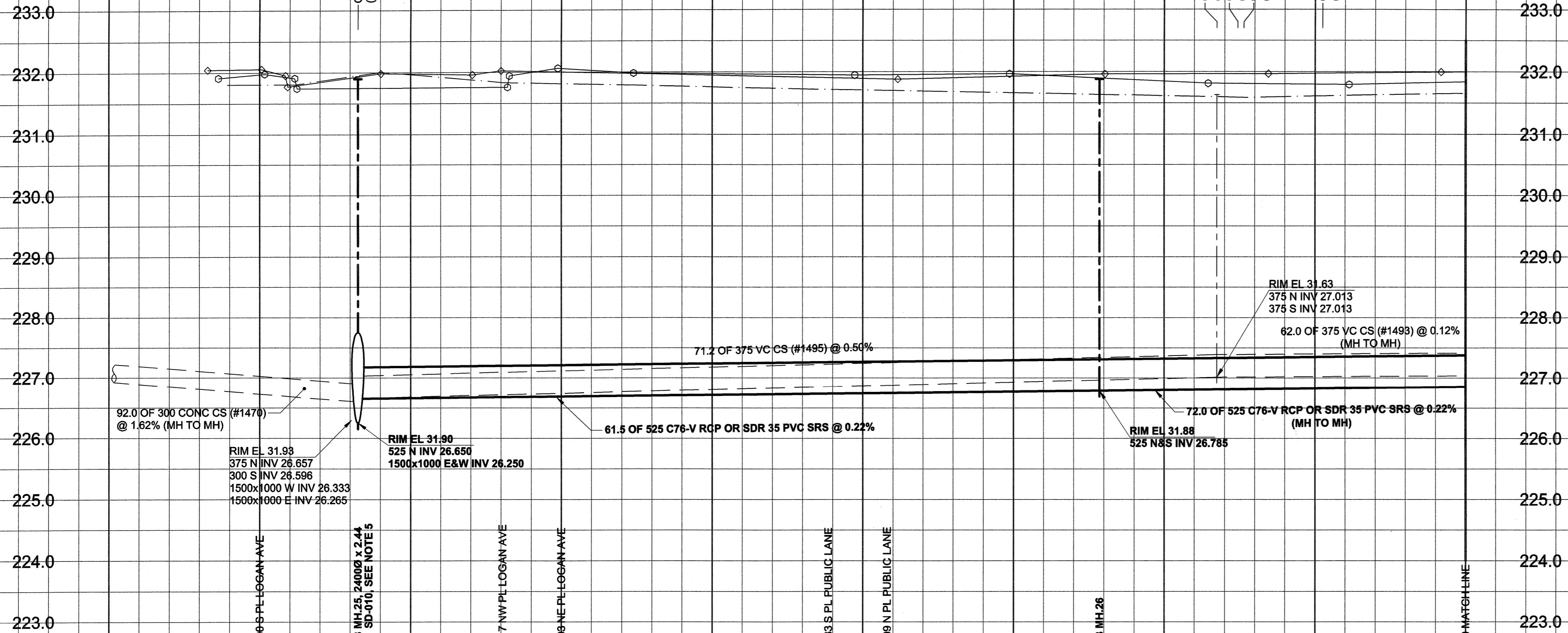


D SIZE 22" x 34" 659mm x 864mm

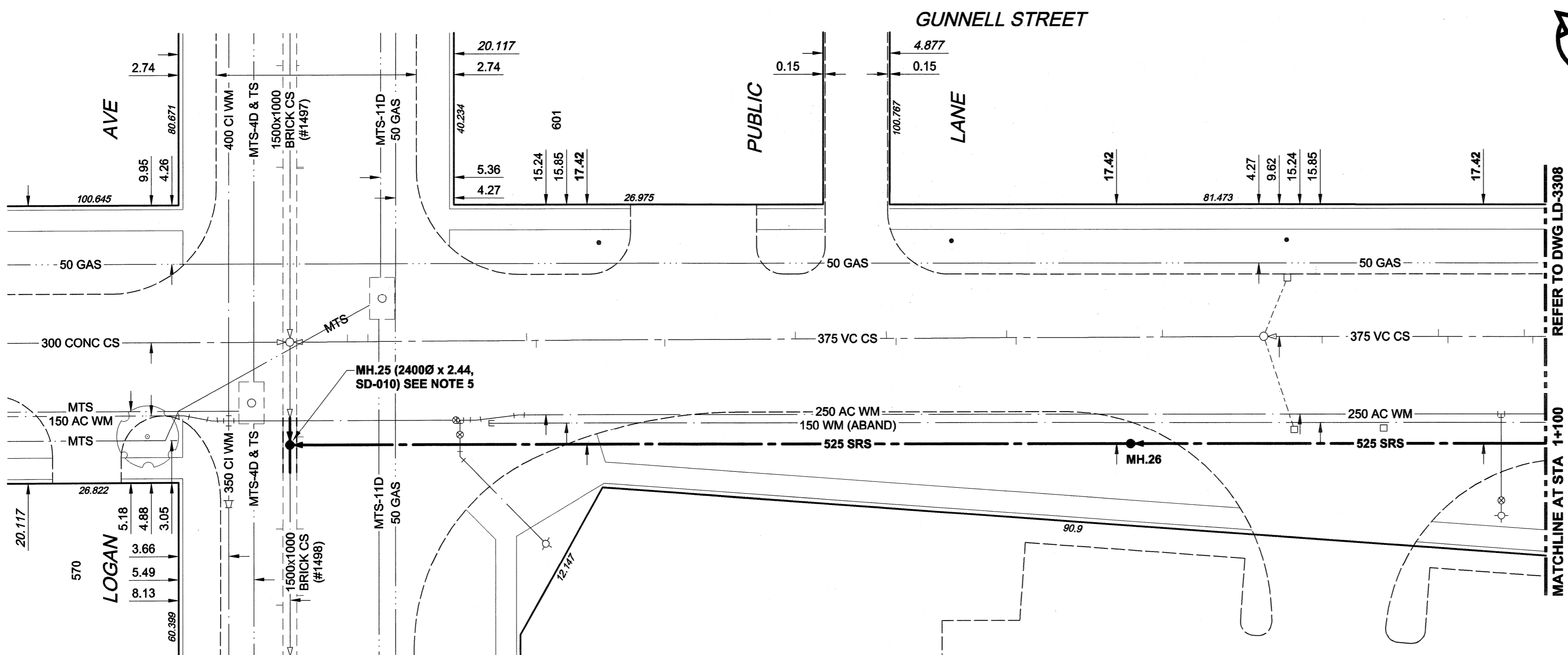
PLOT: 06/03/11 12:33:22 PM

UMA FILE NAME: D265-177-02_01-C-0013_RX.dwg Saved By: dlane

EXISTING FEATURES



CHAINAGE ALONG E PL



REFER TO DWG LD-3308
MATCHLINE AT STA 1+100

WARNING

IF POWER EQUIPMENT OR EXPLOSIVES ARE TO BE USED FOR EXCAVATION ON THIS PROJECT, THE CONTRACTOR MUST:

- 1) NOTIFY THE GAS COMPANY OF THE PROPOSED LOCATION OF EXCAVATION.
- 2) TAKE PRECAUTION TO AVOID DAMAGE TO GAS COMPANY INSTALLATIONS.

SEE PROVINCIAL REGULATION 140/92 FOR DETAILS

150 mm WM	WATERMAIN	150 mm WM	EXISTING	LEGEND - PLAN	NEW	150 mm WM	WATERMAIN	150 mm WM	EXISTING	LEGEND - PROFILE	NEW
	HYDRANT						MTS				
	VALVE						MTS				
	LAND DRAINAGE SEWER						MTS				
	MANHOLE						MTS				
	CATCH BASIN						MTS				
	CULVERT						MTS				
	PIPE ABANDONMENTS						MTS				
	LEGEND - PLAN						MTS				

LOCATION APPROVED
UNDERGROUND STRUCTURES

SUPR. U/G STRUCTURES DATE COMMITTEE

NOTE:
LOCATION OF UNDERGROUND STRUCTURES AS SHOWN ARE BASED ON THE BEST INFORMATION AVAILABLE. BUT NO GUARANTEE IS GIVEN THAT ALL EXISTING UTILITIES ARE SHOWN OR THAT THE GIVEN LOCATIONS ARE EXACT. CONFIRMATION OF EXISTENCE AND EXACT LOCATION OF ALL SERVICES MUST BE OBTAINED FROM THE INDIVIDUAL UTILITIES BEFORE PROCEEDING WITH CONSTRUCTION.

BM 36-010	Trk. in S. wall of Dufferin School,
ELEV 232.172m	545 Alexander Ave., 2.4m W. of
	S.E. Cor. of Bldg.

UMA AECOM	
© 2005 UMA ENGINEERING LTD. ALL RIGHTS RESERVED.	
DESIGNED BY	GEB
CHECKED BY	
DRAWN BY	ADL
APPROVED BY	
HOR. SCALE	1:250
VERT. SCALE	1:50
RELEASED FOR CONSTRUCTION	
DATE	06/03/08
NO. REVISIONS	YYMMDD BY

METRIC
WHOLE NUMBERS INDICATE MILLIMETRES
DECIMALIZED NUMBERS INDICATE METRES

APCGM
Certificate of Authorization
UMA Engineering Ltd.
No. 256 Expiry: April 30, 2006

PROFESSIONAL'S SEAL
PROVINCE OF MANITOBA
REGISTERED PROFESSIONAL ENGINEER

A. NAGY
March 13, 2006

CONSULTANT DRAWING NO. 13
D265-177-02-01

THE CITY OF WINNIPEG
WATER AND WASTE DEPARTMENT

ALEXANDER/BANNATYNE
COMBINED SEWER RELIEF
CONTRACT 2A
GUNNELL STREET
LOGAN AVENUE
TO 35m SOUTH OF HENRY AVENUE

SHEET 13 OF 21
CITY DRAWING NUMBER
LD-3307
REV 0

BID OPPORTUNITY NO. 132-2006