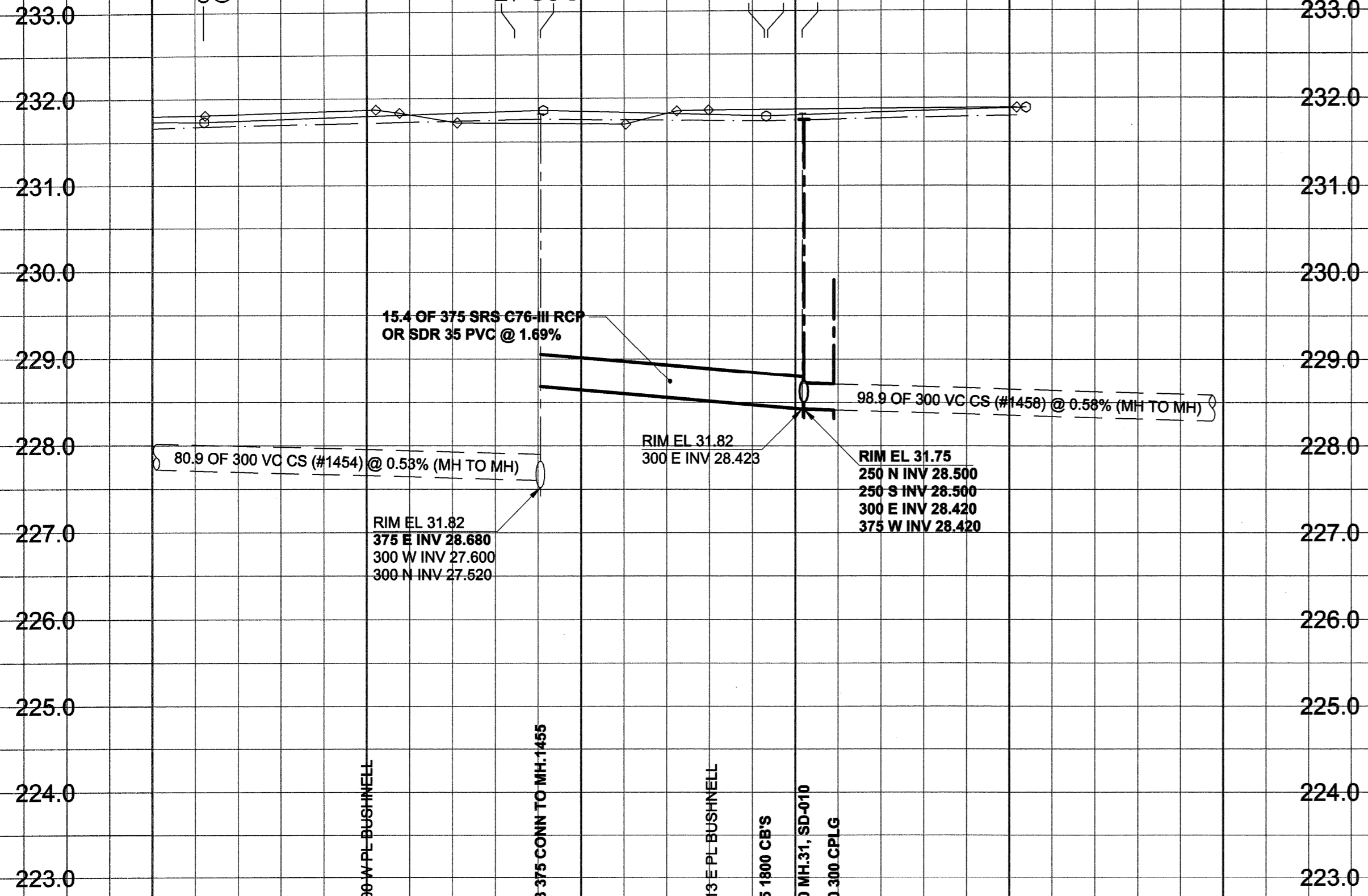


D SIZE 22' x 34' (59mm x 864mm)

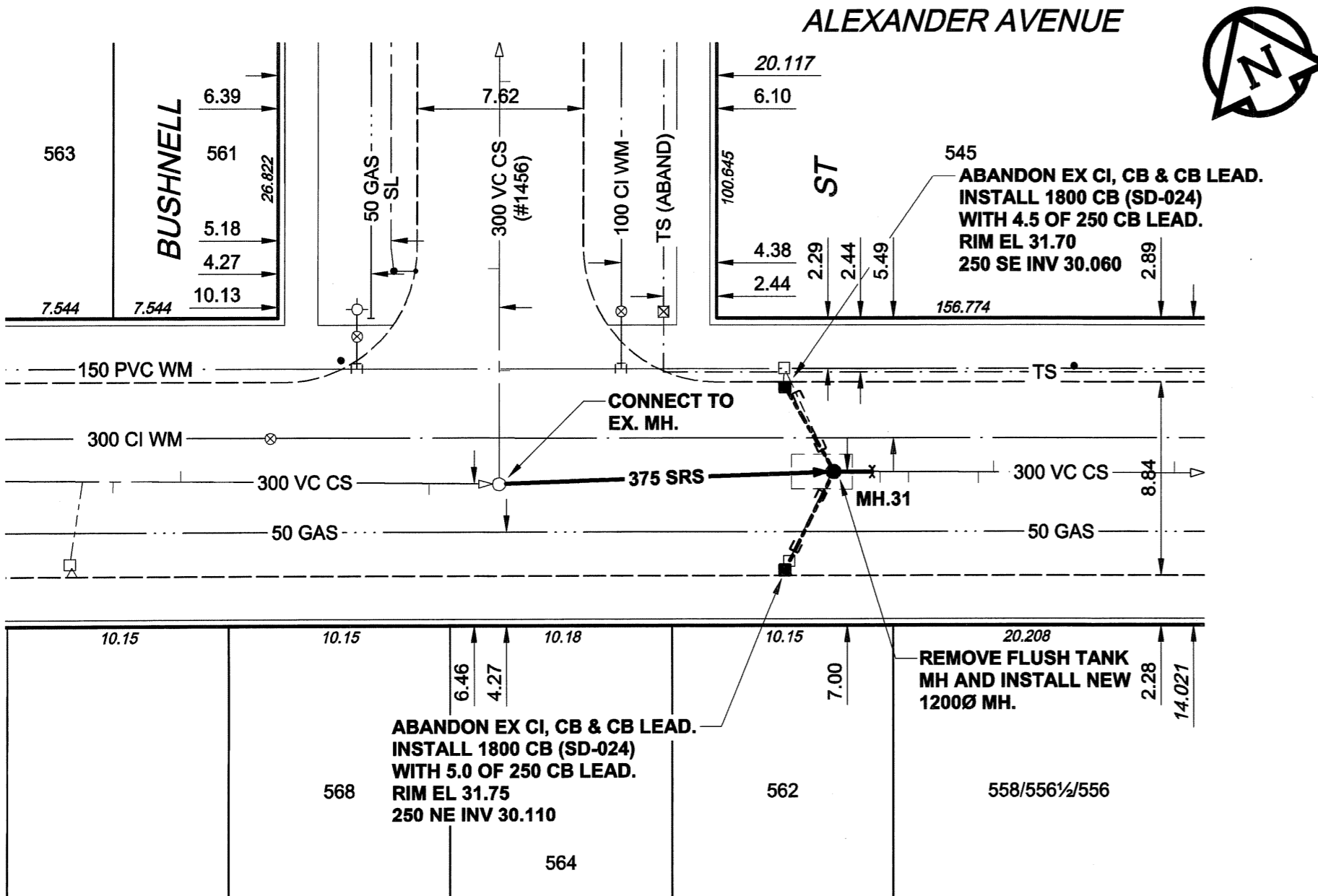
PLOT: 06/03/11 12:34:09 PM

UMA FILE NAME: D265-177-02\_01-C-0016\_RX.dwg Saved By: diane

EXISTING FEATURES



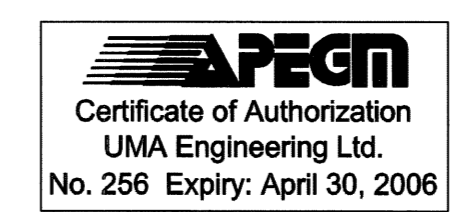
CHAINAGE ALONG S PL



**WARNING**  
 IF POWER EQUIPMENT OR EXPLOSIVES ARE TO BE USED FOR EXCAVATION ON THIS PROJECT, THE CONTRACTOR MUST:  
 1) NOTIFY THE GAS COMPANY OF THE PROPOSED LOCATION OF EXCAVATION.  
 2) TAKE PRECAUTION TO AVOID DAMAGE TO GAS COMPANY INSTALLATIONS.  
 SEE PROVINCIAL REGULATION 140/92 FOR DETAILS

- CONSTRUCTION NOTES:**
- FOR DETAILED TEST HOLE INFORMATION, SEE SPECIFICATION.
  - THE LOCATION OF ALL SERVICES IS TO BE CONFIRMED IN THE FIELD.
  - INSTALL NEW SEWERS AND CATCHBASIN LEADS BY TRENCHLESS METHODS WHEREVER POSSIBLE.
  - RENEW/REHABILITATE CATCHBASINS & RENEW CATCHBASIN LEADS WHERE NOTED.

**METRIC**  
 WHOLE NUMBERS INDICATE MILLIMETRES  
 DECIMALIZED NUMBERS INDICATE METRES



BID OPPORTUNITY NO. 132-2006

150 mm WM	WATERMAIN	150 mm WM	150 mm WM	CURB STOP	150 mm WM	WATERMAIN	150 mm WM
	HYDRANT					HYDRANT	
	VALVE					VALVE	
	LAND DRAINAGE SEWER					LAND DRAINAGE SEWER	
	WASTE WATER SEWER					WASTE WATER SEWER	
	MANHOLE					PAVEMENT CROWN	
	CATCH BASIN					S/E PROPERTY LINE	
	CURB INLET					S/E GUTTER	
	CULVERT					TREE	
	PIPE ABANDONMENTS						
	SURVEY BAR						
	EXISTING		NEW		EXISTING	LEGEND - PROFILE	NEW
	LEGEND - PLAN		NEW		EXISTING	LEGEND - PLAN	NEW

**LOCATION APPROVED**  
 UNDERGROUND STRUCTURES

SUPR. U/G STRUCTURES DATE COMMITTEE

**NOTE:**  
 LOCATION OF UNDERGROUND STRUCTURES AS SHOWN ARE BASED ON THE BEST INFORMATION AVAILABLE. BUT NO GUARANTEE IS GIVEN THAT ALL EXISTING UTILITIES ARE SHOWN OR THAT THE GIVEN LOCATIONS ARE EXACT. CONFIRMATION OF EXISTENCE AND EXACT LOCATION OF ALL SERVICES MUST BE OBTAINED FROM THE INDIVIDUAL UTILITIES BEFORE PROCEEDING WITH CONSTRUCTION.

BM 36-010	1/4" in S. wall of Dufferin School,
ELEV 232.172m	545 Alexander Ave., 2.4m W. of S.E. Cor. of Bldg.

DESIGNED BY GEB		CHECKED BY [Signature]	
DRAWN BY ADL		APPROVED BY [Signature]	
HOR. SCALE 1:250		RELEASED FOR CONSTRUCTION	
VERT. SCALE 1:50		DATE 06/03/11	
DATE 06/03/11		DATE 06/03/11	

PROFESSIONAL'S SEAL  
 PROVINCE OF MANITOBA  
 A. NAGY  
 March 13, 2006  
 REGISTERED PROFESSIONAL ENGINEER

CONSULTANT DRAWING NO. 16  
 D265-177-02-01

**THE CITY OF WINNIPEG**  
 WATER AND WASTE DEPARTMENT

**ALEXANDER/BANNATYNE**  
 COMBINED SEWER RELIEF  
 CONTRACT 2A

ALEXANDER AVENUE  
 BUSHNELL STREET  
 TO 165m WEST OF ISABEL STREET

SHEET 16 OF 21  
 CITY DRAWING NUMBER  
**LD-3310**  
 REV 0