

**SHORING**

- SHORING SHALL BE DESIGNED BY A PROFESSIONAL ENGINEER REGISTERED IN THE PROVINCE OF MANITOBA
- SHORING DESIGN SHALL INCLUDE SURCHARGE LOAD FOR RAILWAY LOAD, COOPER E72

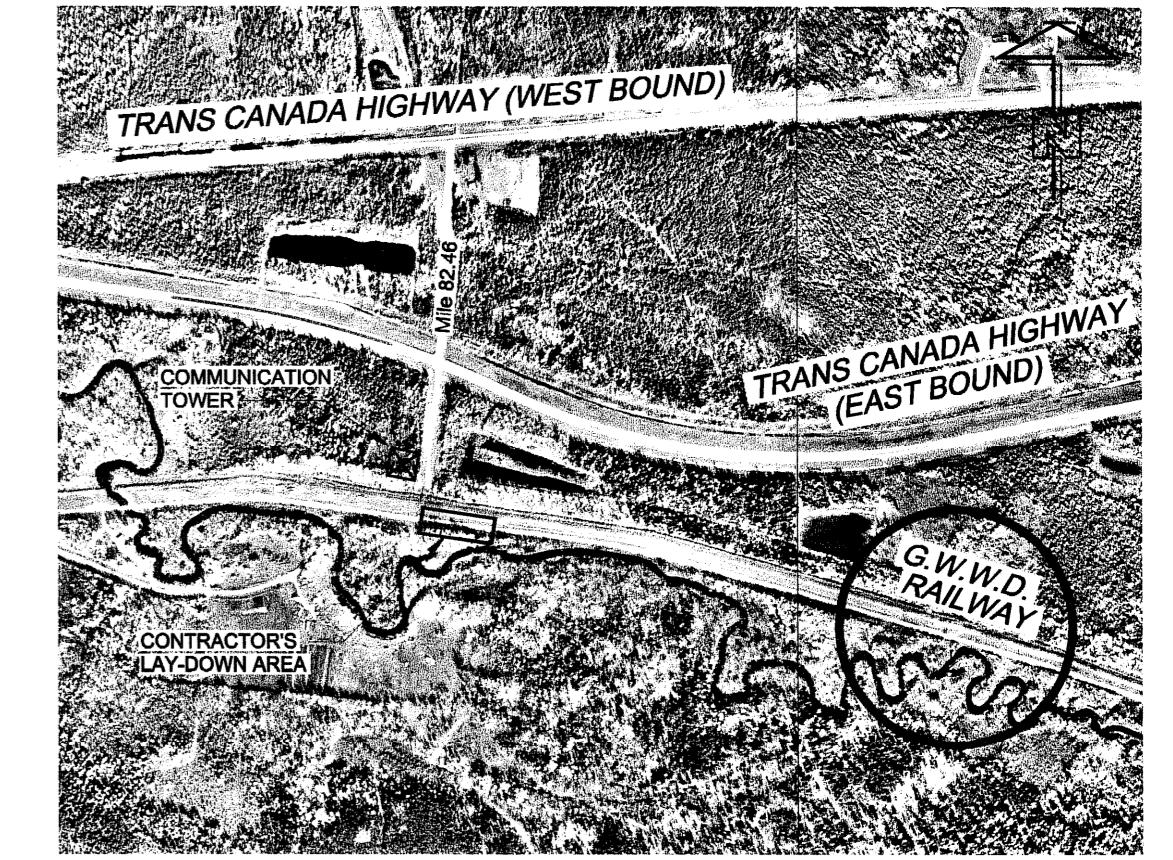
**ENVIRONMENTAL PROTECTION**

- ALL WORKS SHALL CONFORM TO PROVINCIAL AND FEDERAL LEGISLATION INCLUDING THE PREVENTION AND LOSS OF FISH HABITAT
- DEWATERING PUMPS SHALL BE SCREENED TO PROTECT FISH
- ANY FISH PRESENT IN OUTFALL STRUCTURE SHALL BE NETTED AND RELEASED
- SEDIMENT BARRIERS SHALL BE INSTALLED AT OUTLET OF DISCHARGE CHANNEL TO PREVENT SILTATION AND SEDIMENTATION OF THE ADJACENT WATERCOURSE
- DEWATERING PUMPS SHALL NOT BE DIRECTLY DISCHARGED INTO A WATERCOURSE
- NO WORKS SHALL OCCUR IN THE BOGGY RIVER BETWEEN APRIL 15 AND JULY 15

**SITE ACCESS**

- SITE ACCESS ACROSS THE G.W.W.D. RAILWAY WILL ONLY BE PERMITTED AT THE DESIGNATED CROSSING LOCATION
- THE CITY OF WINNIPEG WILL INSTALL CONTRACTOR SUPPLIED CROSSING TIMBERS
- TRACK CROSSINGS SHALL BE MAINTAINED AND KEPT FREE OF DEBRIS AT ALL TIMES
- ALL CONSTRUCTION TRAFFIC SHALL COME TO A COMPLETE STOP PRIOR TO CROSSING RAILWAYS

**NOTE:**  
ALL CRACKS & CONSTRUCTION JOINTS U/S OF NEW SLUICE GATE TO BE INJECTED WITH POLYURETHANE FOAM GROUT



**LOCATION PLAN**  
SCALE: N.T.S.

**LOCATION APPROVED UNDERGROUND STRUCTURES**

SUPR. U/G STRUCTURES	DATE	COMMITTEE

**NOTE:**  
LOCATION OF UNDERGROUND STRUCTURES AS SHOWN ARE BASED ON THE BEST INFORMATION AVAILABLE. BUT NO GUARANTEE IS GIVEN THAT ALL EXISTING UTILITIES ARE SHOWN OR THAT THE GIVEN LOCATIONS ARE EXACT. CONFIRMATION OF EXISTENCE AND EXACT LOCATION OF ALL SERVICES MUST BE OBTAINED FROM THE INDIVIDUAL UTILITIES BEFORE PROCEEDING WITH CONSTRUCTION.

B.M. TDC Mile 83.02 Overflow Manhole  
ELEV. 319.869m

NO.	REVISIONS	YYMMDD	BY
C	REVISED - ADDED SLUICE GATE	06/03/09	DML
B	ISSUED FOR CONSTRUCTION	06/02/24	WJd
A	ISSUED FOR REVIEW	06/02/13	WJd

UMA | AECOM

© 2006 UMA ENGINEERING LTD. ALL RIGHTS RESERVED.

DESIGNED BY	MGM	CHECKED BY	CCW
DRAWN BY	WJd	APPROVED BY	<i>[Signature]</i>
HOR. SCALE	1:250	RELEASED FOR CONSTRUCTION	<i>[Signature]</i>
VERT. SCALE	1:50	DATE	06-03-14
DATE	04/03/14	DATE	06-03-14

**APGM**  
Certificate of Authorization  
UMA Engineering Ltd.  
No. 256 Expiry: April 30, 2006

PROFESSIONAL'S SEAL  
PROVINCE OF MANITOBA  
13 March 2009  
C. C. MACEY  
REGISTERED ENGINEER

CONSULTANT DRAWING NO. 01  
D265-200-00

**THE CITY OF WINNIPEG**  
WATER AND WASTE DEPARTMENT

**SHOAL LAKE AQUEDUCT**  
ASSET PRESERVATION PROGRAM  
CONSTRUCTION OF MILE 83  
SLUICE GATE CHAMBER  
PLAN  
LOCATION PLAN &  
GENERAL LAYOUT - PLAN & PROFILE

SHEET 1 OF 2  
CITY DRAWING NUMBER  
D-8898  
REV C