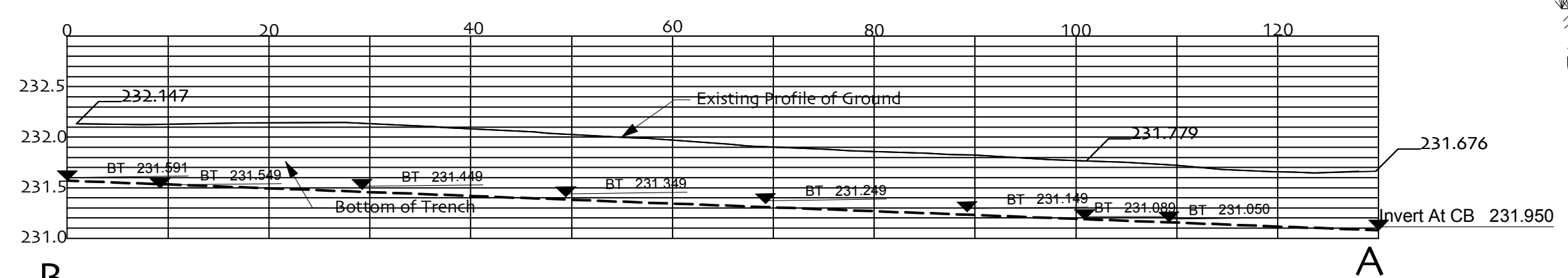
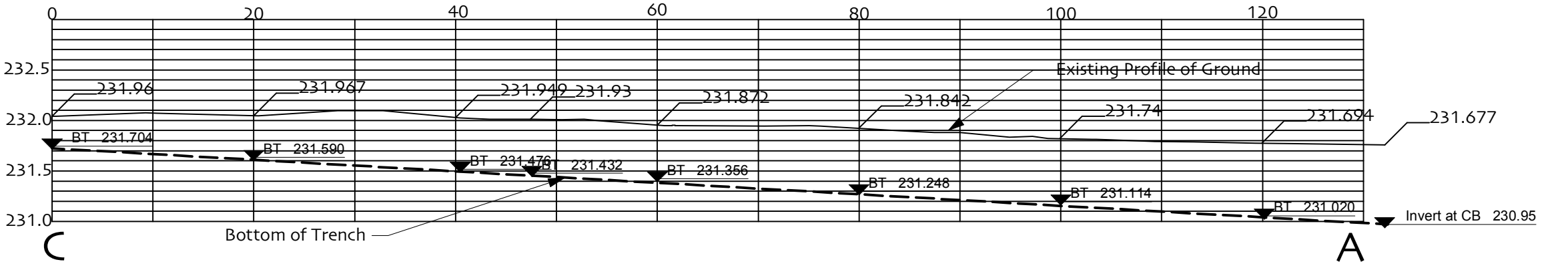


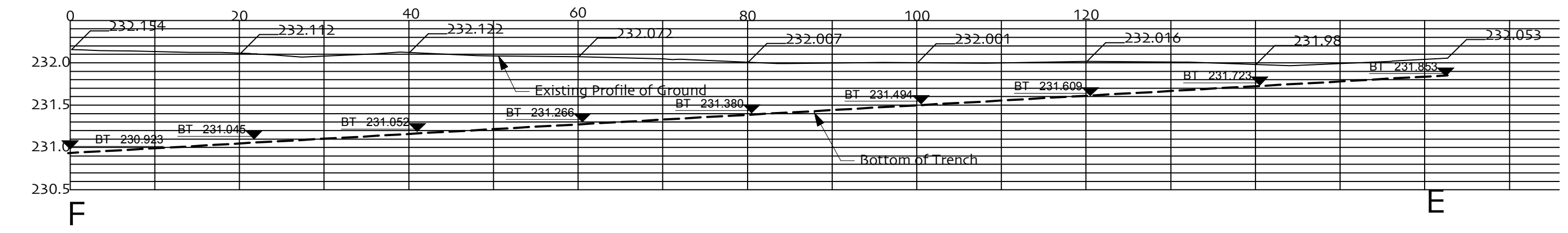
- General Notes**
1. All dimensions are in meters unless otherwise noted.
  2. All elevations are Geodetic and in Meters.
  3. Contractor is to limit operations to the area within the area of work shown on the drawing. Should areas outside of this limit be damaged during the course of construction, Contractor is to make good the damage at his own expense.
  4. Contractor is to obtain location of all utilities prior to construction. If using power equipment to excavate, contractor must notify Hydro and Gas and telephone utilities and take steps to avoid damaging their installations.
  5. Contractor is to protect any existing trees/shrubs not scheduled for demolition/removal.
  6. Spot elevations are to govern over contour information.
  7. Inspections by Contract Administrator are required after trench layout, after installation of pipe and prior to backfilling, and upon completion of installation and after adjustments.
  8. Contract Administrator is to receive at least 48 hours notice prior to an inspection being required.
  9. This drawing is schematic only and is intended only to be indicative of the scope of work. All components are to be located on site and those locations approved by Contract Administrator prior to installation.



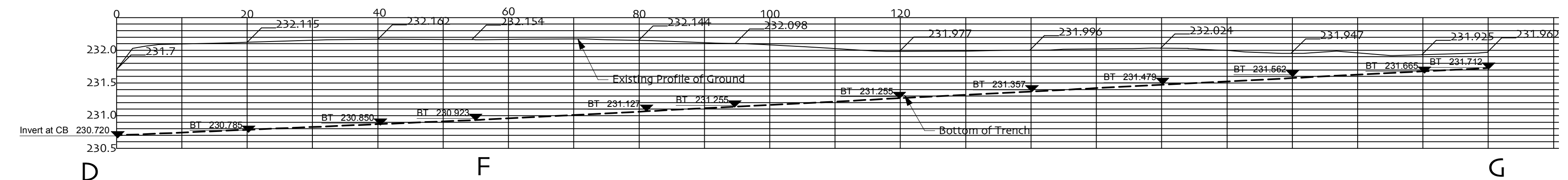
1 Profile B-A Grant Park  
Horizontal 1:500 Vert. 1:50



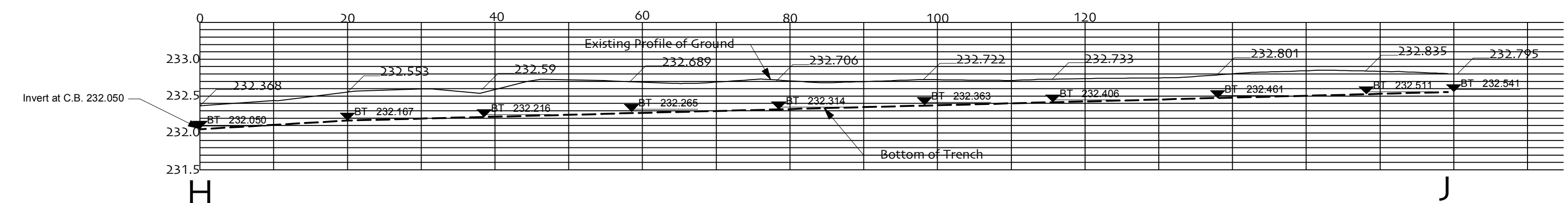
2 Profile C-A Grant Park  
Horizontal 1:500 Vert. 1:50



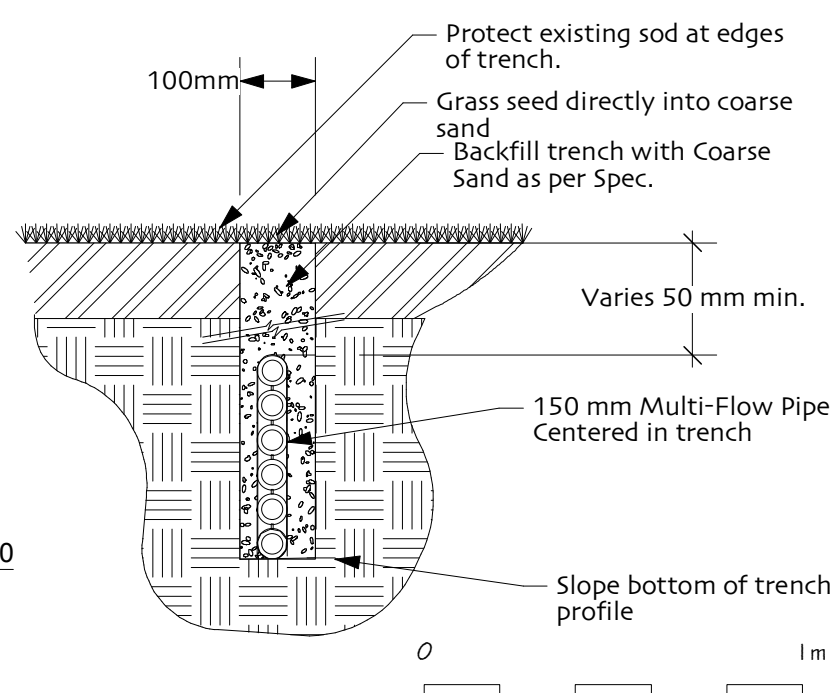
3 Profile F-E Grant Park  
Horizontal 1:500 Vert. 1:50



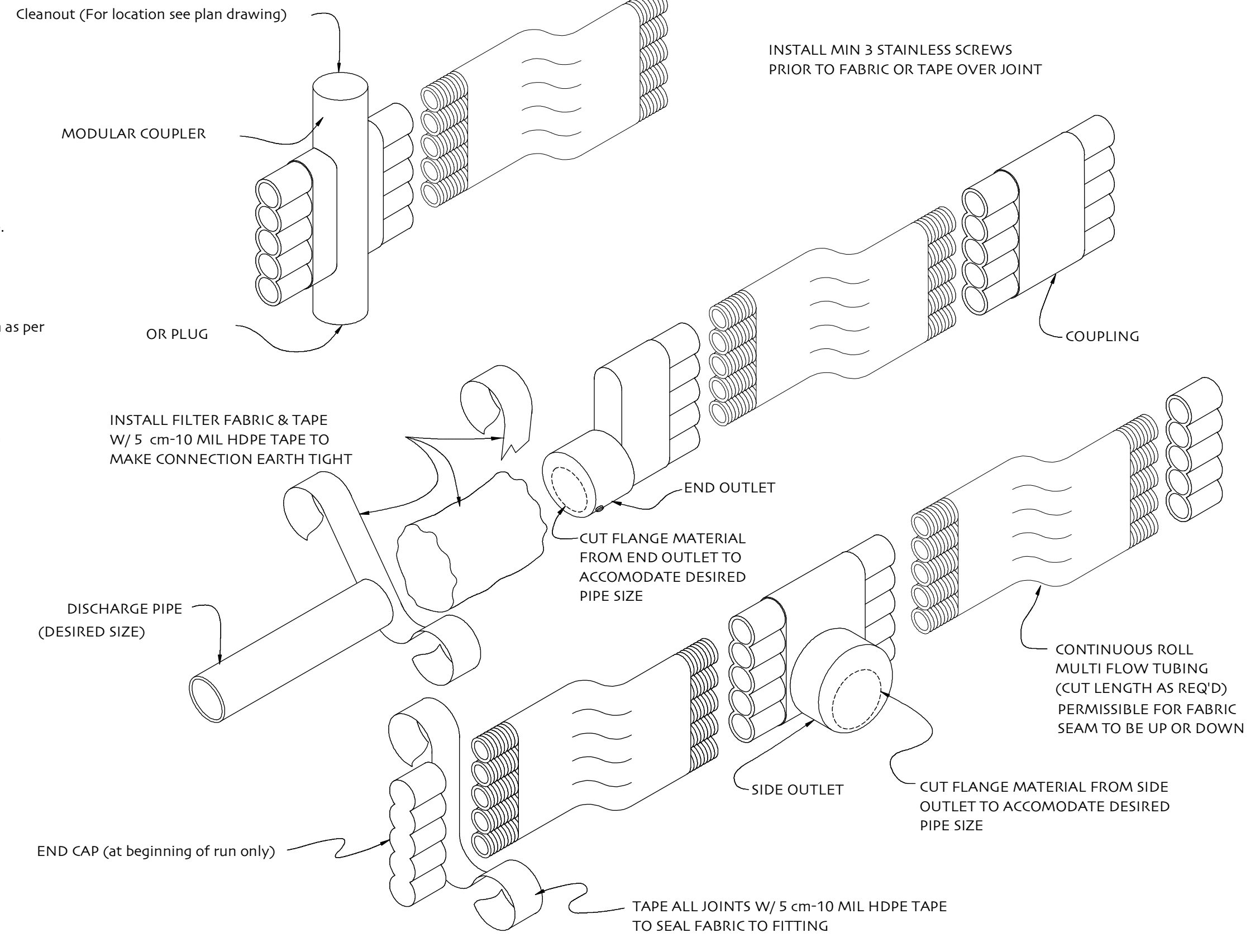
4 Profile D-F-G Grant Park  
Horizontal 1:500 Vert. 1:50



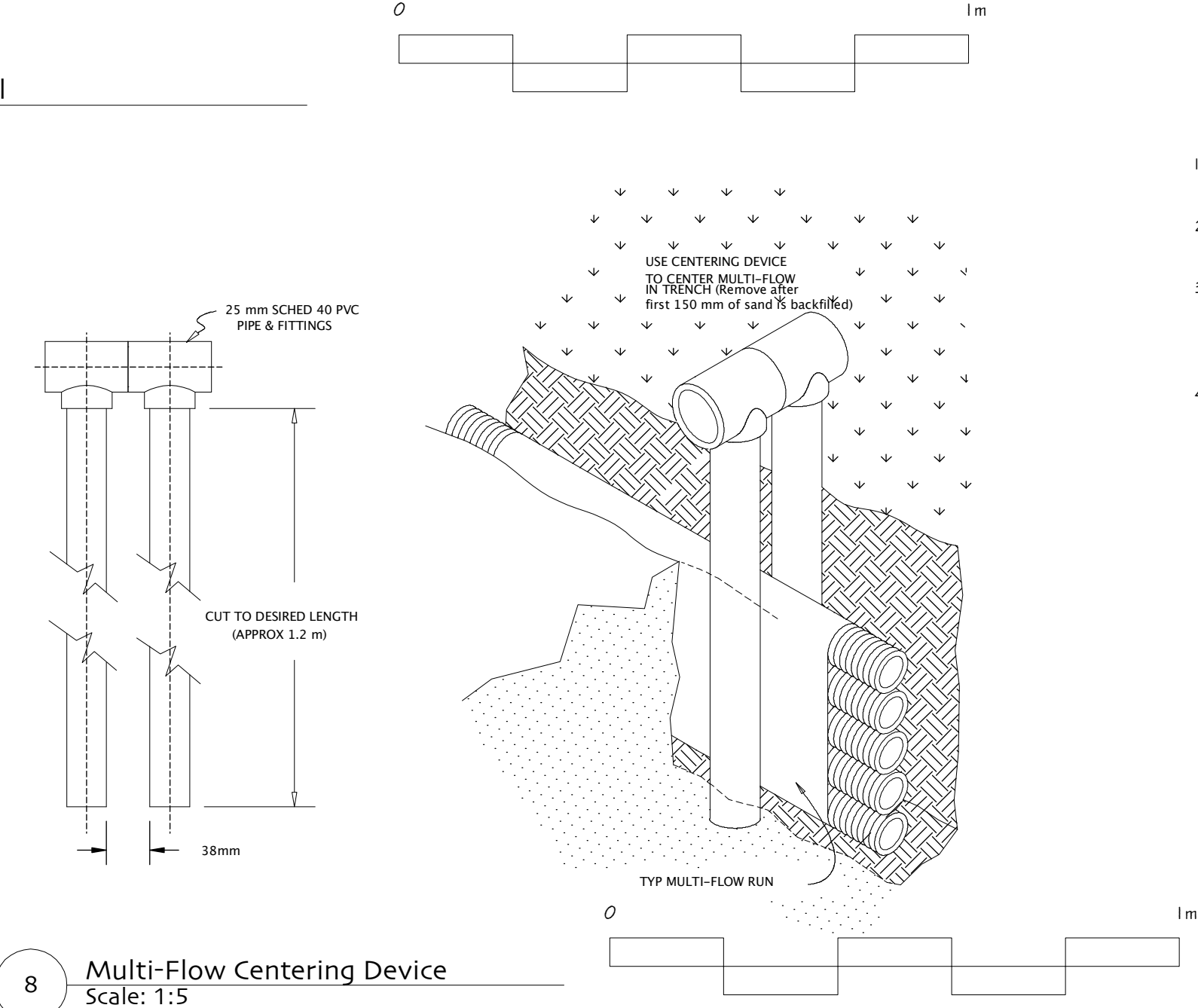
5 Profile H-J River Heights Community Center  
Horizontal 1:500 Vert. 1:50



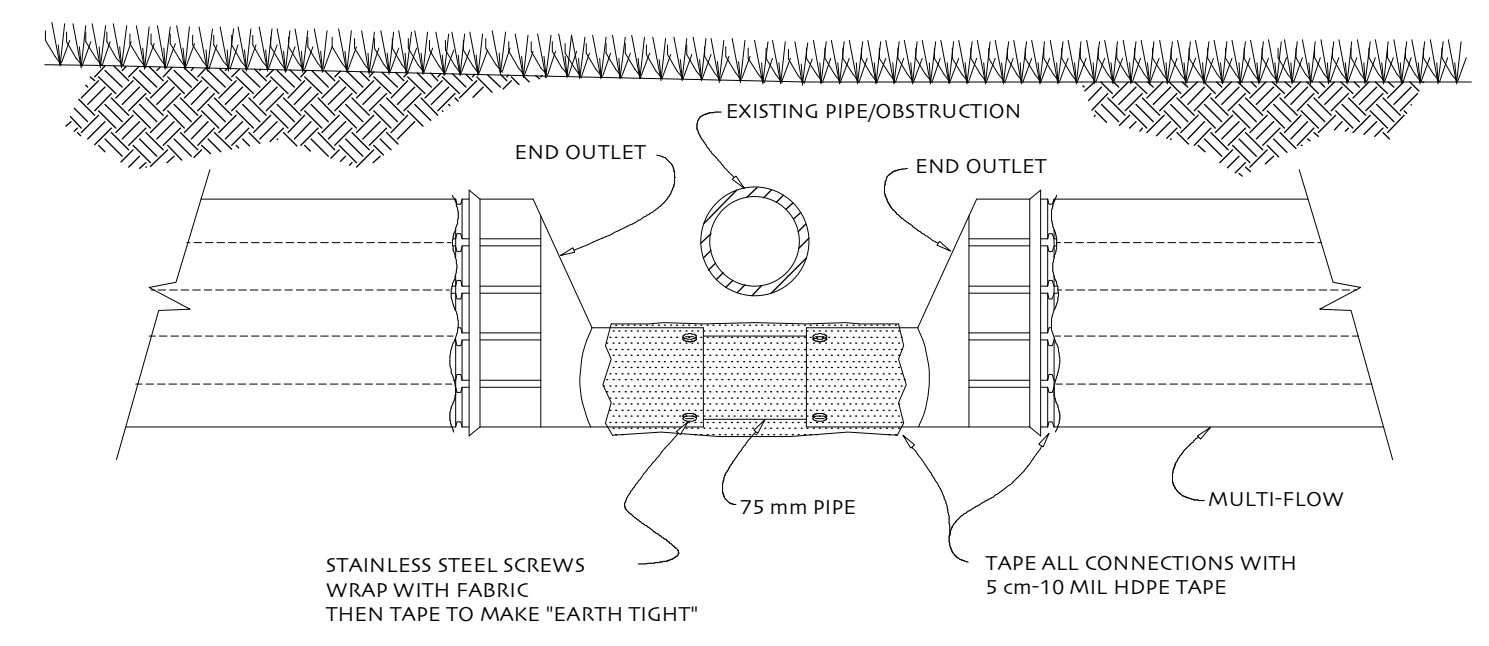
6 Multi-Flow Drain Trench  
Scale: 1:10



7 Multi-Flow Assembly Detail  
Scale: 1:5



8 Multi-Flow Centering Device  
Scale: 1:5

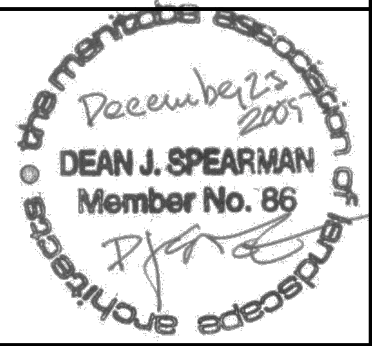


9 Multi-Flow Obstruction Detail  
Scale: 1:5

1. This drawing shall not be used for construction unless signed and sealed by Landscape Architect.
2. Variations and modifications to the work shown will not be allowed without prior written consent of Landscape Architect.
3. Drawing and Specifications, as instruments of service, are the property of the Landscape Architect. The copyright is reserved in the name of the Landscape Architect. No reproduction may be made without the prior written consent of the Landscape Architect.
4. Contractors/bidders are hereby granted a limited license to reproduce these drawings for the purposes of bidding. Such reproductions are not to be used for construction.

0	2/25/06	For Bid Opportunity
---	---------	---------------------

No.	DATE	ISSUE NOTES



PROJECT TITLE  
Parks & Athletic Fields Improvements  
South Area Parks  
River Heights Community Center

DRAWING TITLE  
Details and Profiles