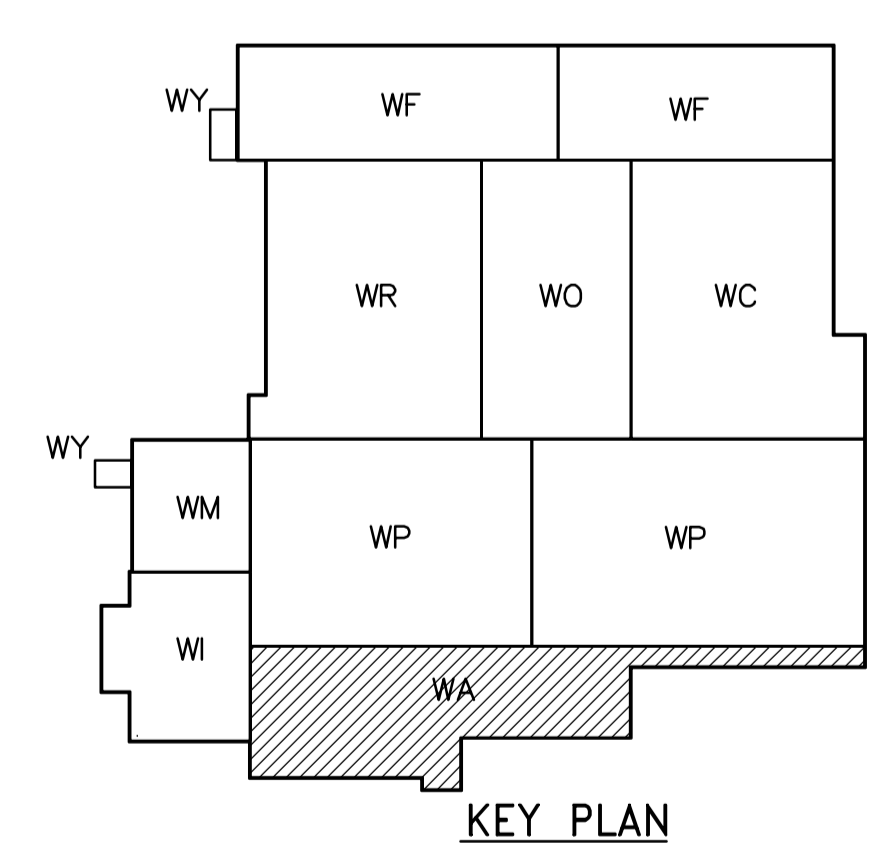
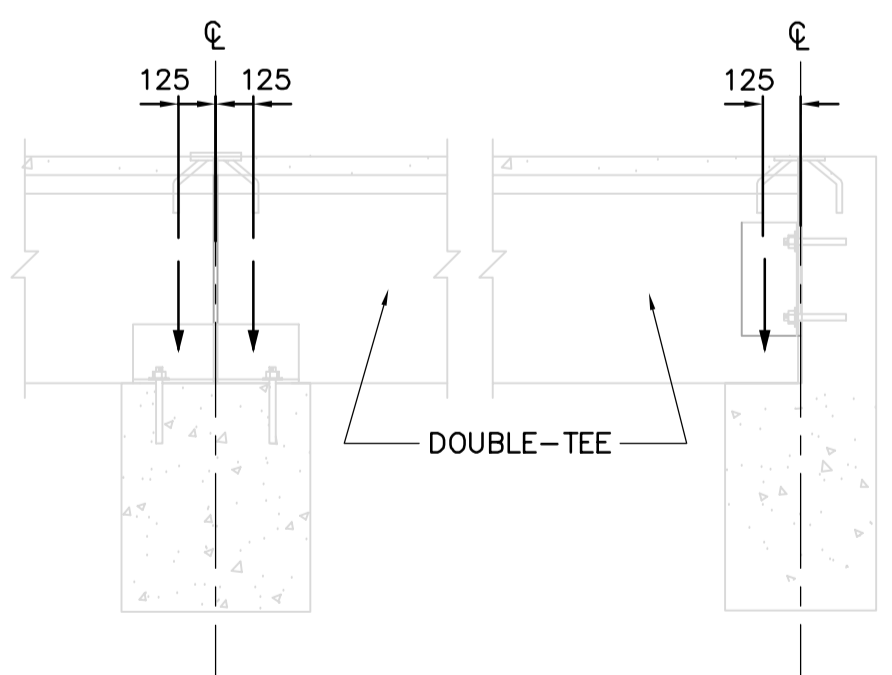
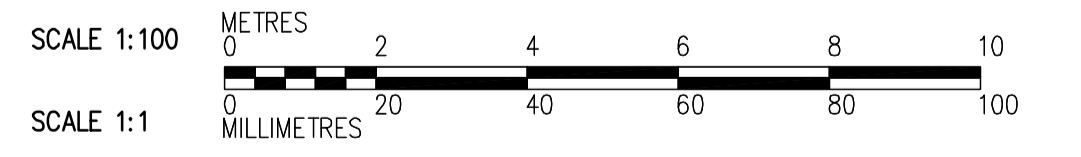


- NOTES:**
1. MINIMUM DESIGN LIVE LOAD IS 1.0kN/m² IN ABSENCE OF SNOW LOAD.
 2. ESTIMATED WEIGHT OF PRECAST DOUBLE-TEE: 275kg/m²
 3. SEE ROOF PLAN DRAWINGS FOR ADDITIONAL LOADS.
 4. SEE BID OPPORTUNITY 583-2005 FOR COLUMN AND BEAM SCHEDULES.
 5. SEE LOADING INDICATED ON PLAN FOR ALLOWABLE LATERAL LOADS ON COLUMNS.
 6. ANY LOADS ON FRAMING IN EXCESS OF THOSE SHOWN OR NOTED REPRESENTS REQUIREMENT FOR ADDITIONAL BRACING AND/OR SHORING.
 7. ROOF FRAMING DESIGN LOADS DO NOT INCLUDE IMPACT DUE TO PRECAST INSTALLATION, CONTRACTOR SHALL EMPLOY PRECAST INSTALLATION PROCEDURES THAT WILL NOT OVERSTRESS THE FRAMING SYSTEM.
 8. MAXIMUM PERMISSIBLE EXCENTRICITY OF PRECAST DOUBLE-TEE REACTIONS IS SHOWN BELOW:



ROOF FRAMING PLAN
1:100



<p>APEGN Certificate of Authorization CH2M HILL Canada Ltd. No. 1441 Expiry: April 30, 2007</p>	<p>Frederickson Cooper ARCHITECTS</p>	<p>EarthTech A 100 International Ltd. Company</p>	<p>ENGINEER'S SEAL</p> <p>ORIGINAL SIGNED BY D. KRUGER 2006/10/11</p>	<p>THE CITY OF WINNIPEG WATER AND WASTE DEPARTMENT ENGINEERING DIVISION</p> <p>WATER TREATMENT PLANT ADMINISTRATION SUPPLY AND INSTALLATION OF PRECAST ROOF PANELS</p> <p>STRUCTURAL ADMINISTRATION AREA ROOF FRAMING PLAN</p>	<p>CITY FILE NUMBER</p>
	<p>DESIGNED BY MH</p> <p>CHECKED BY AP</p>	<p>APPROVED BY AHL</p>	<p>SHEET OF</p>		
	<p>SCALE: 1:100</p> <p>RELEASED FOR CONSTRUCTION BY: R. SOROKOWSKI</p>	<p>CITY DRAWING NUMBER</p> <p>1-0601A-A-S5141-001-000</p>			
	<p>00 ISSUED FOR TENDER 06/10/11 DK</p> <p>NO. REVISIONS DATE BY DATE 2006/08/30 DATE 2006/10/11</p>	<p>CONSULTANT DRAWING NO. WA-S5141</p>			