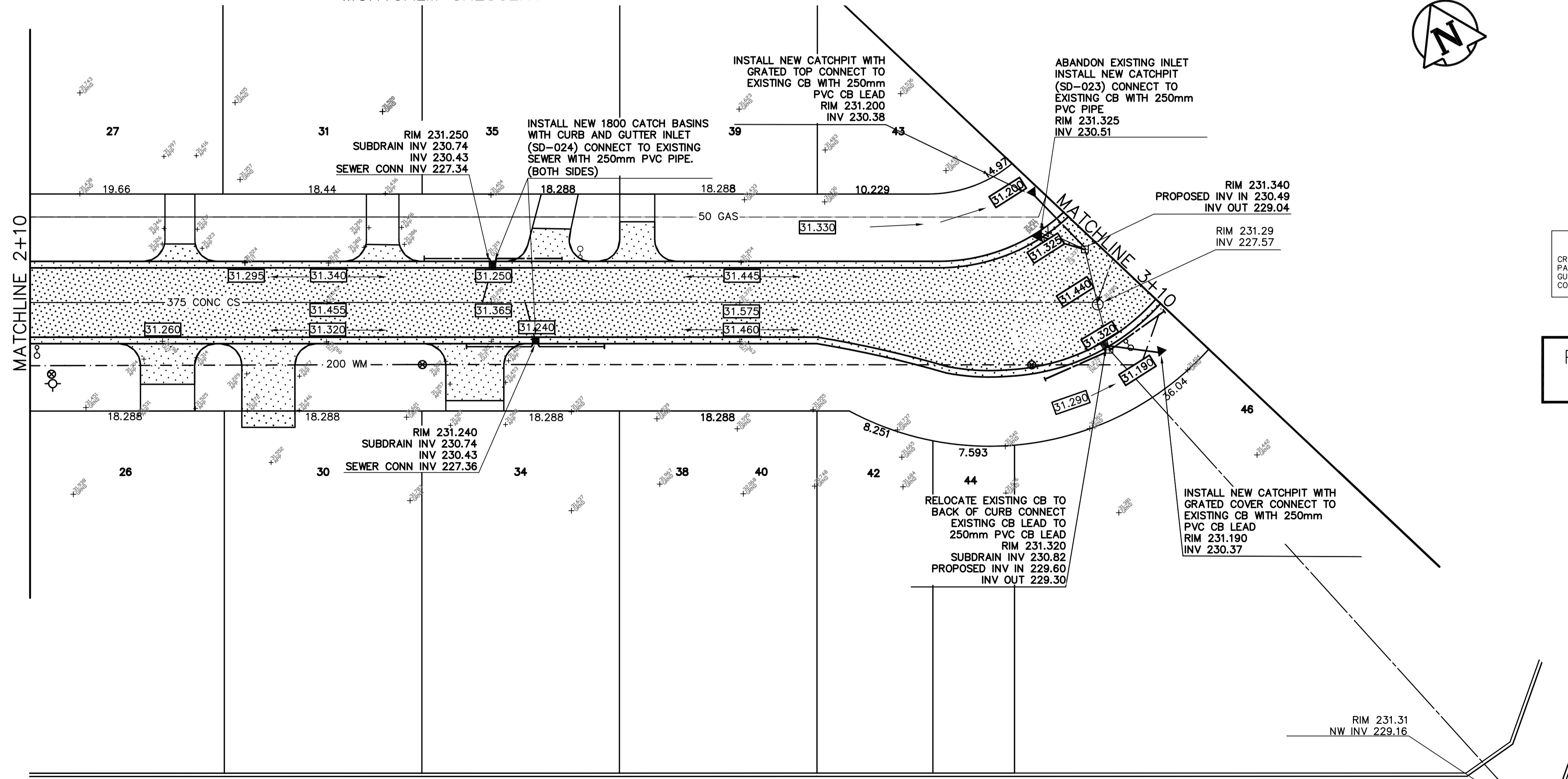


MONTCALM CRESCENT



NOTE
CRACKING AND SEATING OF THE EXISTING PAVEMENT, SAW CUTTING OF THE CURB & GUTTER AND PARTIAL DEPTH SAW CUTTING COMPLETED BY OTHERS IN 2005

PRELIMINARY
NOT TO BE USED FOR CONSTRUCTION

WARNING
IF POWER EQUIPMENT OR EXPLOSIVES ARE TO BE USED FOR EXCAVATION ON THIS PROJECT THE CONTRACTOR MUST:
1) OBTAIN CLEARANCE FROM THE PRIOR TO EXCAVATION.
2) TAKE PRECAUTION TO AVOID DAMAGE TO GAS UTILITY INSTALLATIONS.
SEE PROVINCIAL REGULATION 210/72 FOR DETAILS

CONSTRUCTION NOTES
1) CURB REPLACEMENT AS DIRECTED BY THE CONTRACT ADMINISTRATOR
2) ALL STREET RADIUS CURB UNDER 15M RADIUS SHALL BE REPLACED AS MODIFIED OR AS DIRECTED BY THE CONTRACT ADMINISTRATOR
3) PAVEMENT REPAIRS SHOWN ARE ONLY A REPRESENTATIVE SAMPLE OF THE TENDERED QUANTITIES
4) ASPHALT TIE-INS TO BE DETERMINED IN THE FIELD BY THE CONTRACT ADMINISTRATOR.
5) SIDEWALK REPLACEMENT AS DIRECTED BY THE CONTRACT ADMINISTRATOR.
6) BOULEVARD REPLACEMENT AS DIRECTED BY THE CONTRACT ADMINISTRATOR.
7) ADJUST EXISTING MANHOLES AS DIRECTED BY THE CONTRACT ADMINISTRATOR.

ALL CHAINAGES ARE MEASURED ALONG THE CENTRE LINE OF MONTCALM CRESCENT

METRIC
WHOLE NUMBERS INDICATE MILLIMETRES
DECIMALIZED NUMBERS INDICATE METRES
ADD 200.00 TO ELEVATIONS TO OBTAIN GEODETIC DATUM

BID OPPORTUNITY NO. 188-2006

150 mm WM	WATERMAIN	150 mm WM	HYDRO	150 mm WM	WATERMAIN	150 mm WM	LOCATION APPROVED
+	HYDRANT	+	MTS	+	HYDRANT	+	UNDERGROUND STRUCTURES
o	VALVE	o	CONCRETE	x	VALVE	x	
300 mm LDS	LAND DRAINAGE SEWER	300 mm LDS	LIMIT OF ASPHALT	300 mm LDS	SEWER	300 mm LDS	
250 mm WWS	WASTE WATER SEWER	250 mm WWS	CURB RENEWAL	31.000	SOUTH/EAST WALK	31.000	
o	MANHOLE	o	ASPHALT		NORTH/WEST WALK		
□	CATCH BASIN	□	ELEVATIONS		SOUTH/EAST P		
△	CURB INLET	△	PROPERTY LINE		NORTH/WEST P		
☆	WOOD POLES	☆	SURVEY BAR		Q PROFILE		
o	LAMP STANDARD	o	CURB STOP		SOUTH/EAST GUTTER		
—	GAS	—	RAMP CURB		NORTH/WEST GUTTER		
EXISTING	LEGEND - PLAN	PROPOSED	EXISTING	LEGEND - PLAN	PROPOSED	EXISTING	LEGEND - PROFILE

NOTE:
LOCATION OF UNDERGROUND STRUCTURES AS SHOWN ARE BASED ON THE BEST INFORMATION AVAILABLE BUT NO GUARANTEE IS GIVEN THAT ALL EXISTING UTILITIES ARE SHOWN OR THAT THE GIVEN LOCATIONS ARE EXACT. CONFIRMATION OF EXISTENCE AND EXACT LOCATION OF ALL SERVICES MUST BE OBTAINED FROM THE INDIVIDUAL UTILITIES BEFORE PROCEEDING WITH CONSTRUCTION.

B.M. ELEV.	GBM 25-044	231.562
NO.	REVISIONS	DATE
BY		

ENGINEERING DIVISION
TECHNOLOGY SERVICES BRANCH
106 - 1155 PACIFIC AVE

DESIGNED BY C.T. CHECKED BY D.K./R.K.D.
DRAWN BY C.T. APPROVED BY T.M.C.
HOR. SCALE: 1 : 250
VERTICAL: 1 : 10
RELEASED FOR CONSTRUCTION
DATE 2006/01/23

ENGINEER'S SEAL
PROVINCE OF MANITOBA
REGISTERED PROFESSIONAL ENGINEER
L.P. DEANE
ORIGINAL SIGNED
200X/04/07

THE CITY OF WINNIPEG
PUBLIC WORKS DEPARTMENT

MONTCALM CRESCENT
FROM VANIER DR. TO VANIER DR.
CRACK & SEAT REHABILITATION
FROM STA. 2+10 TO STA. 3+10

CITY DRAWING NUMBER SE-06-10
SHEET 2 OF 3
4