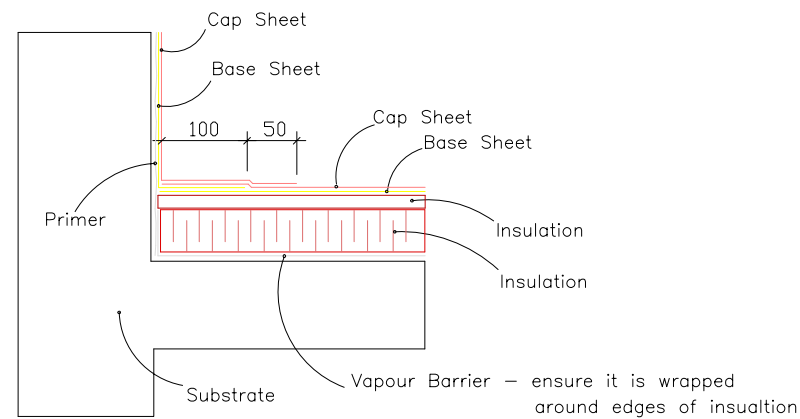
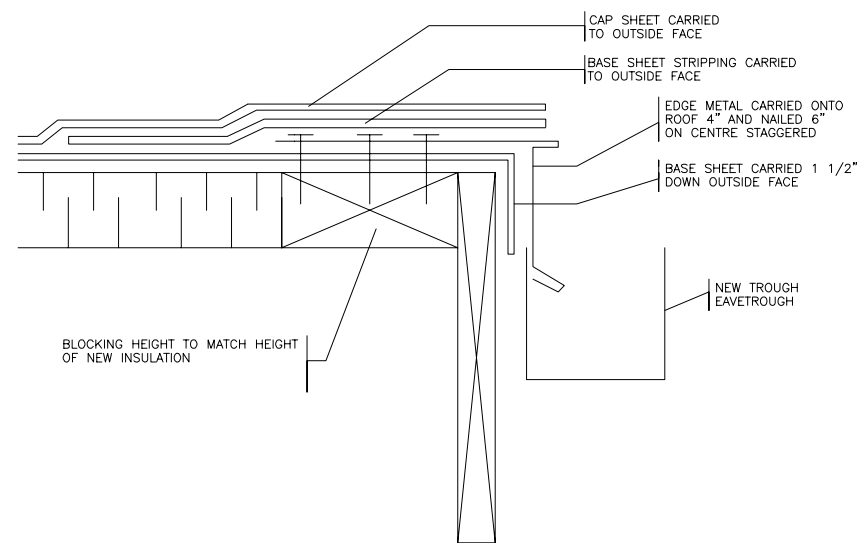


# Typical Roof Edge Detail

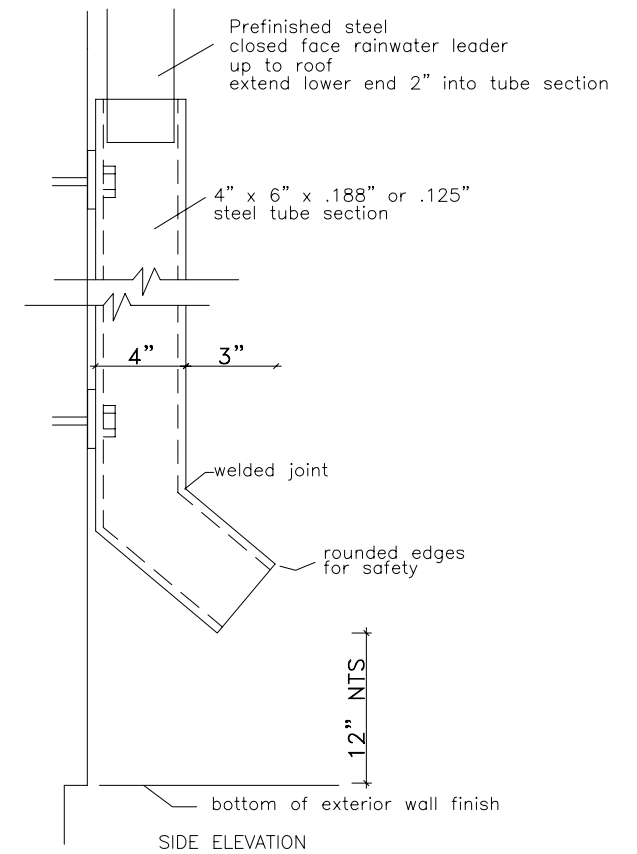
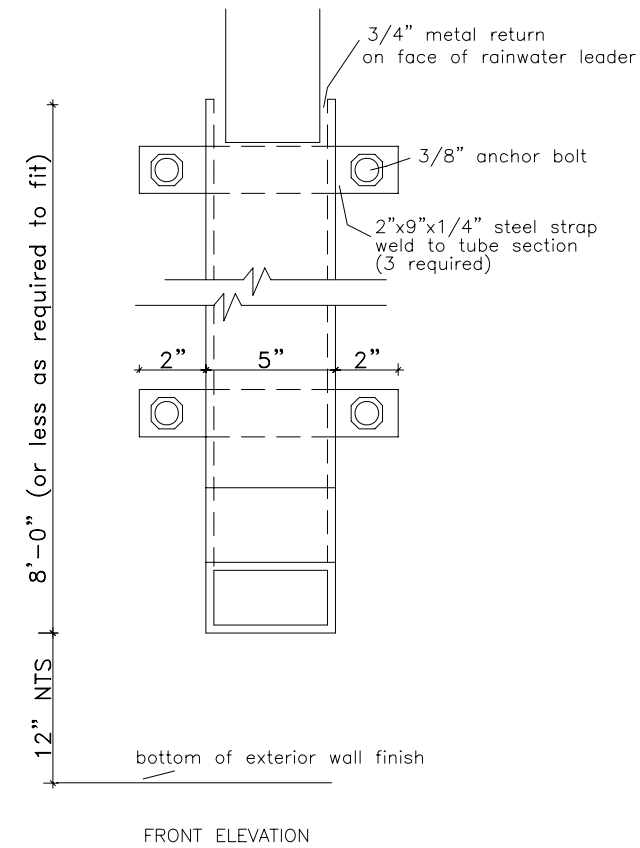


Note: Modified Bitumen stripping used in conjunction with 4 ply felt membrane is to have base sheet extend 12" onto flat and cap sheet 18" onto flat.

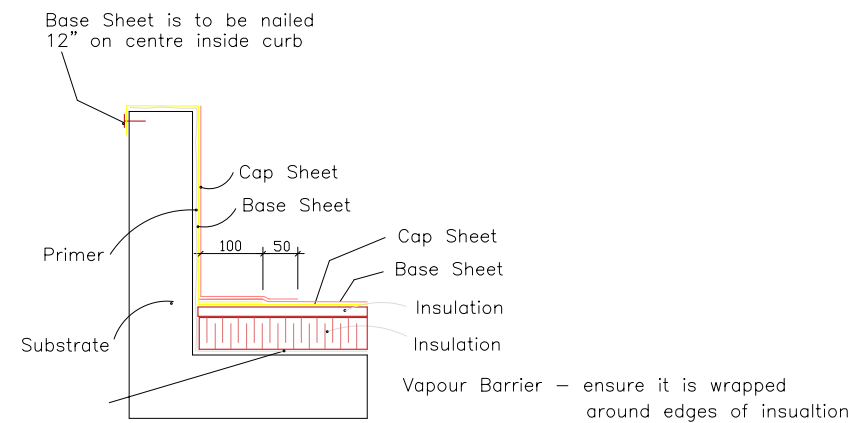
TYPICAL EAVE DETAIL



# Structural Down Pipes



# Mechanical Curb Flashing



Note: Details are to be similar for inverted roof assemblies

<b>AGASSIZ CONSULTING GROUP</b>	
809 Pipeline Road, Winnipeg, Manitoba Phone: 697-8091 Fax: 697-8039	
Project: <b>Roland Michener Arena 1121 Wabasha Winnipeg, MB</b>	
Date: <b>April 5, 2005</b>	
Drawing No.	<b>D-1</b>
File no: <b>3617-05</b>	Scale: <b>N.T.S.</b>