

FIGURE - EXISTING SCUM PIPING
NTS

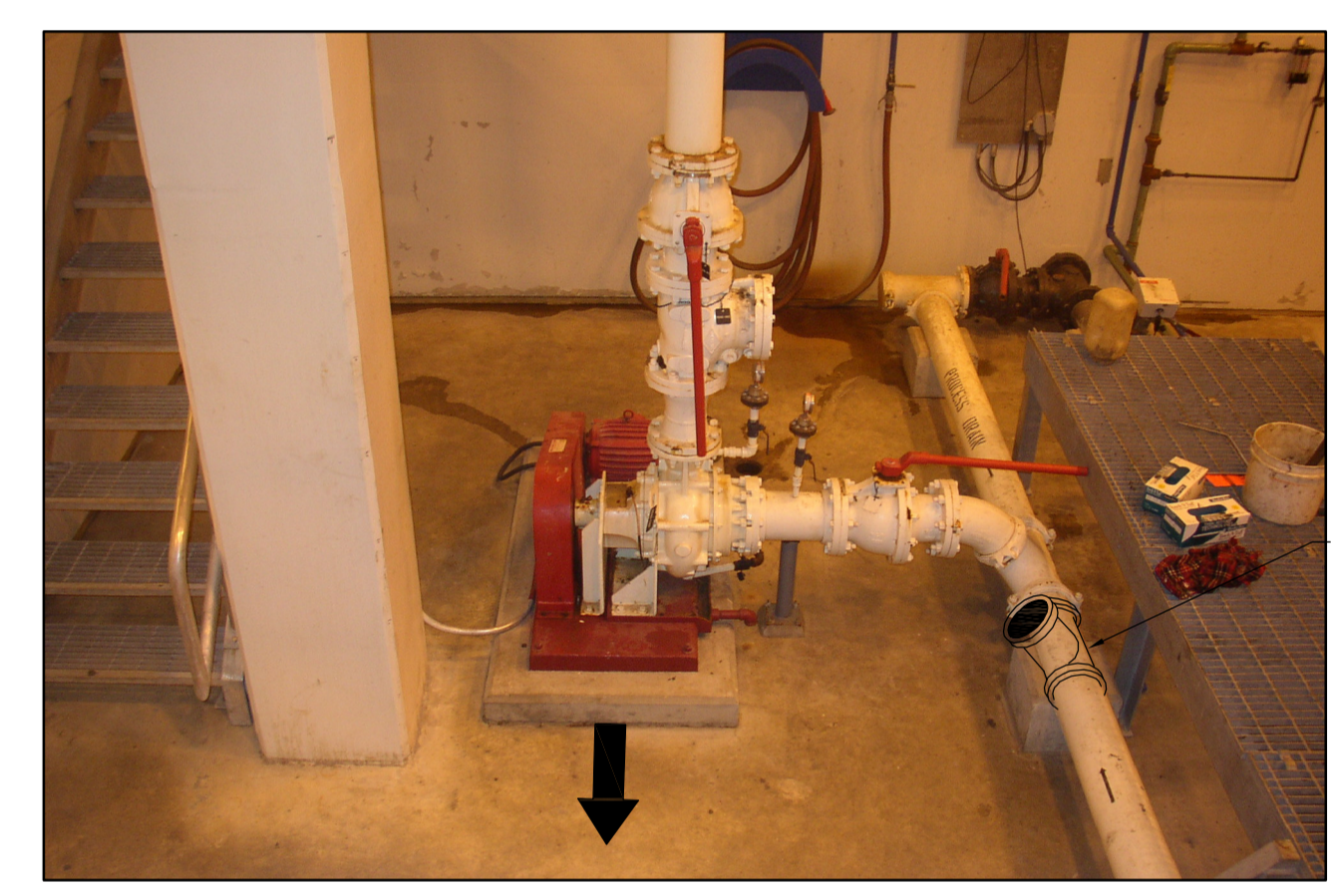


FIGURE - EXISTING DEWATERING PUMP
NTS

DRAWING NOTES

- ① NEW OPENING/ACCESSWAY INTO FERMENTER PUMP ROOM. REFER TO STRUCTURAL DRAWINGS.
- ② RELOCATE EXISTING CONTROLS TO WEST WALL INSIDE ROOM. REFER TO FIGURE A.
- ③ RELOCATE EXISTING PIPING AND VALVING ABOVE NEW OPENING INTO FERMENTER PUMP ROOM (APPROXIMATELY 3250mm ABOVE GROUND). REFER TO FIGURE A.
- ④ RELOCATE EXISTING PUMP TO CENTRELINE OF EXISTING HEADER. EXTEND CONCRETE PAD AND MODIFY PIPING TO SUIT NEW INSTALLATION. REFER TO FIGURE B, SHOWING EXISTING DEWATERING PUMP.
- ⑤ REMOVE EXISTING WAS PIPING AND VALVING AS SHOWN. CAP PIPE TO MAINTAIN FUNCTION OF 150-WAS MAIN LINE.
- ⑥ REMOVE EXIST P240-150-TD PIPING AS SHOWN - REPLACE WITH NEW PIPING AS PER DWG. PP1.01

APEGM
Certificate of Authorization
Earth Tech Canada Inc.
No. 730 Expiry: April 30, 2006

B.M. ELEV.			
DESIGNED BY	YL	CHECKED BY	KM
DRAWN BY	PJY	APPROVED BY	JEH
HOR. SCALE:	AS NOTED	RELEASED FOR CONSTRUCTION BY:	J. VEILLEUX
VERTICAL SCALE:		DATE	2005/10/06
NO. REVISIONS	DATE	BY	
01	21-2006 ADDENDUM 3	06/05/19	PJY
00	ISSUED FOR TENDER	06/04/26	SRP

EarthTech
A Tyco International Ltd. Company

DESIGNED BY	YL	CHECKED BY	KM
DRAWN BY	PJY	APPROVED BY	JEH
HOR. SCALE:	AS NOTED	RELEASED FOR CONSTRUCTION BY:	J. VEILLEUX
VERTICAL SCALE:		DATE	2005/10/06
NO. REVISIONS	DATE	BY	
01	21-2006 ADDENDUM 3	06/05/19	PJY
00	ISSUED FOR TENDER	06/04/26	SRP

ENGINEER'S SEAL
ORIGINAL SIGNED BY
J.E. HUTCHISON
2006/04/26
CONSULTANT DRAWING NO.
PP0.01

THE CITY OF WINNIPEG
WATER AND WASTE DEPARTMENT
ENGINEERING DIVISION

WEWPCC
BIOLOGICAL NUTRIENT REMOVAL UPGRADE
CONTRACT 3

CITY FILE NUMBER
SHEET OF
CITY DRAWING NUMBER

PROCESS
AREA P - PRIMARY CLARIFIERS
PUMP ROOM - DEMOLITION PLAN