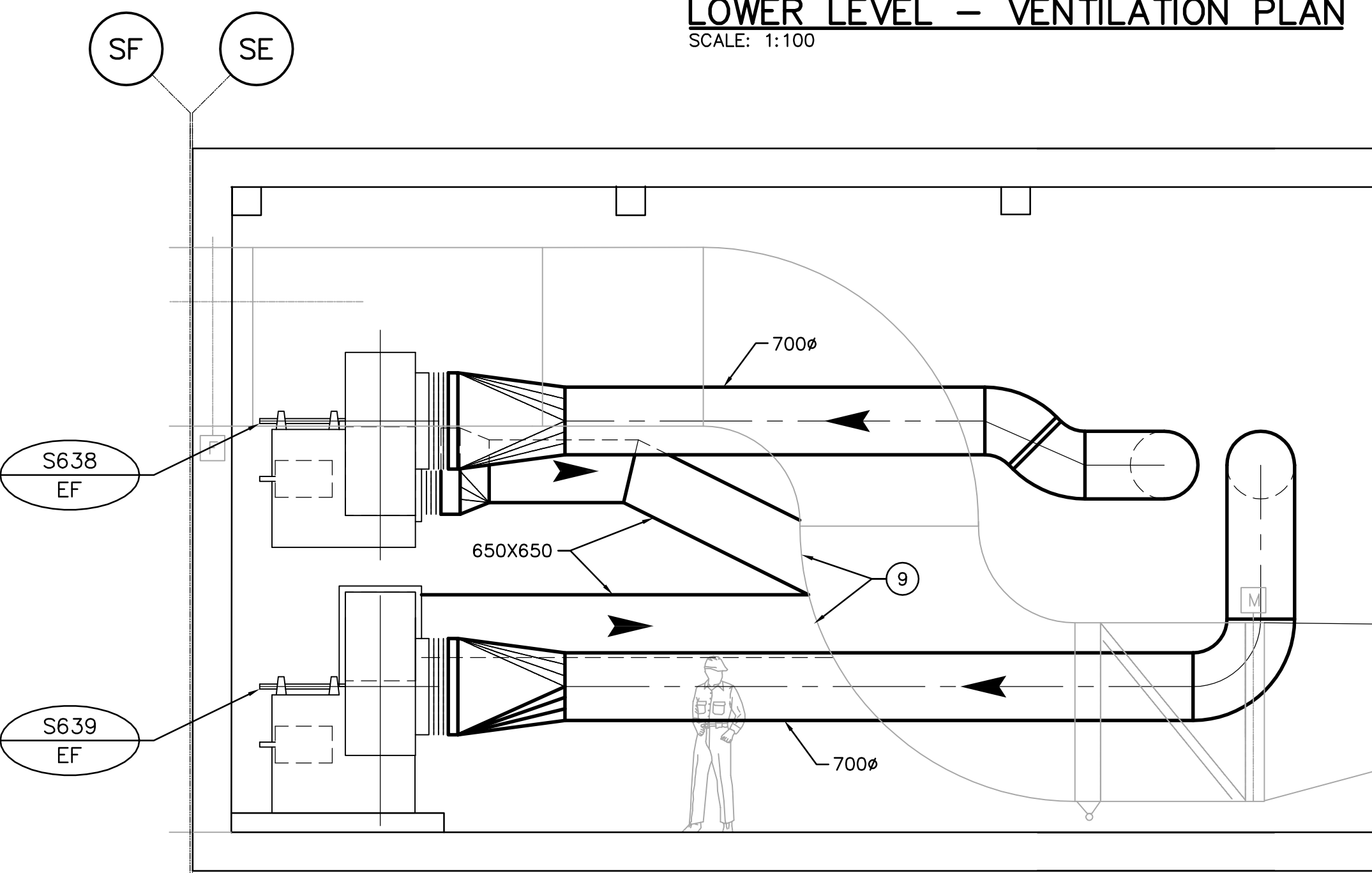
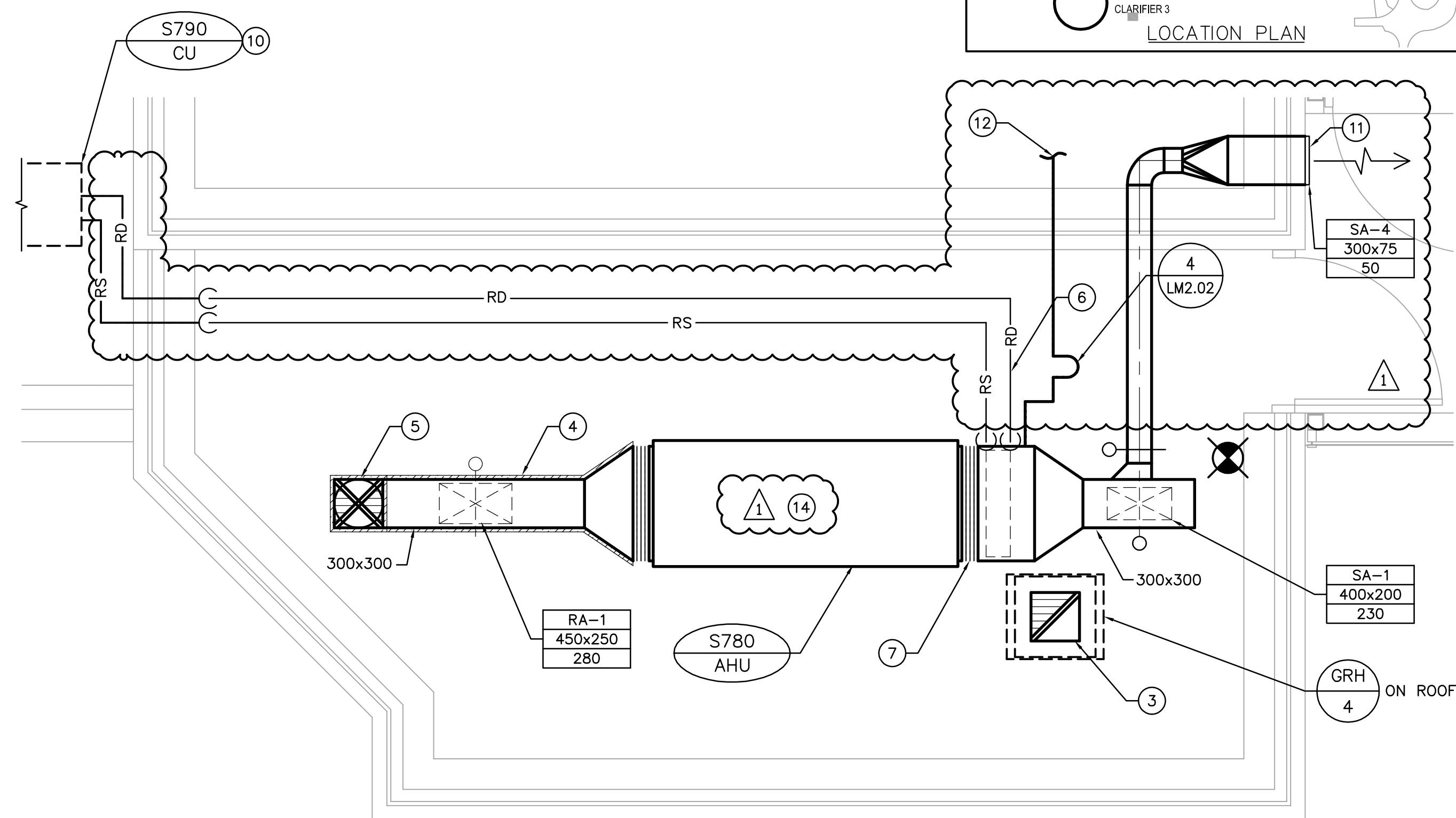


LOWER LEVEL - VENTILATION PLAN
SCALE: 1:100

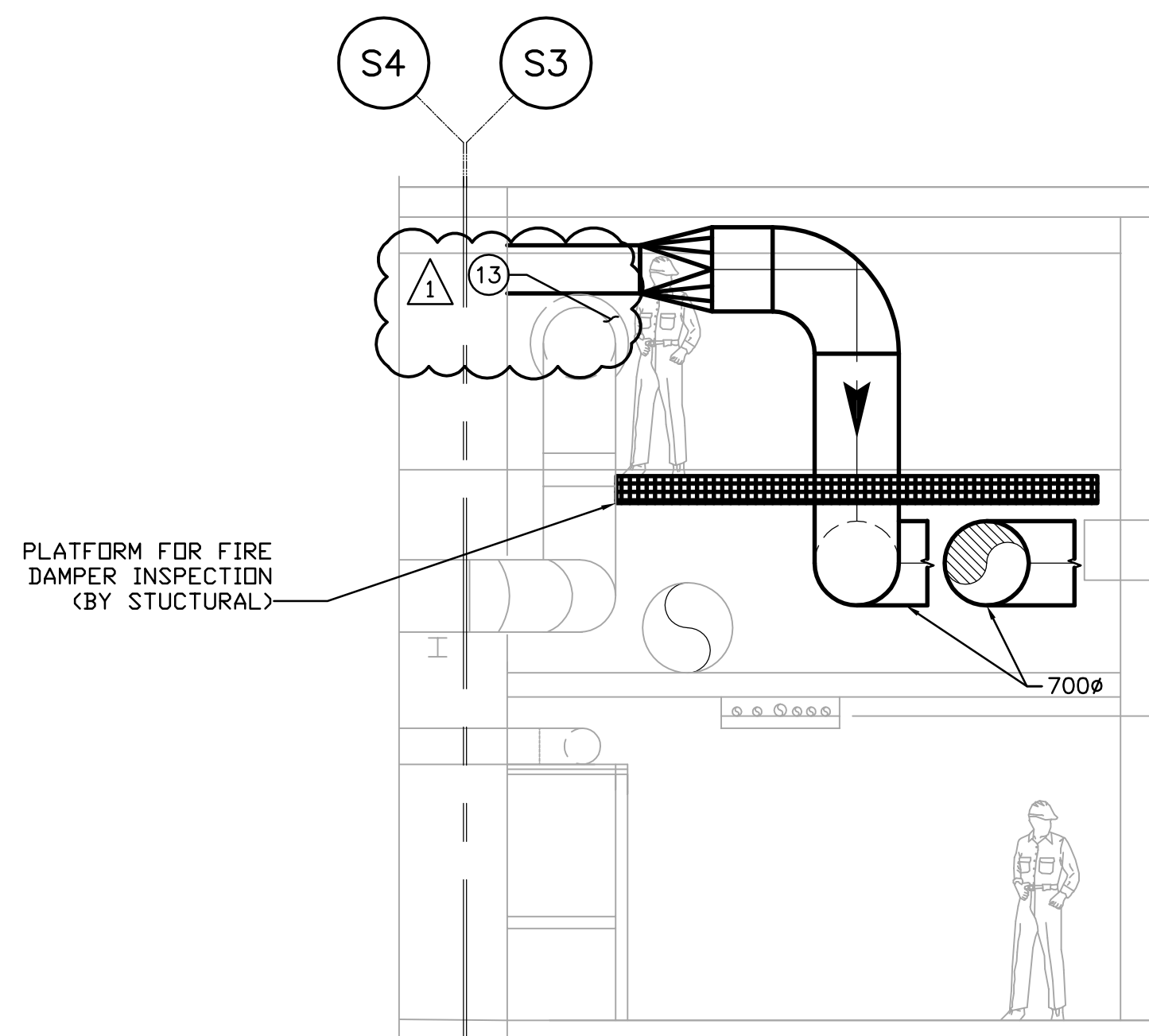


1 SECTION
SM1.01 SCALE 1:100

APEGM
Certificate of Authorization
Earth Tech Canada Inc.
No. 730 Expiry: April 30, 2006



ELECTRICAL ROOM - VENTILATION PLAN
SCALE: 1:25



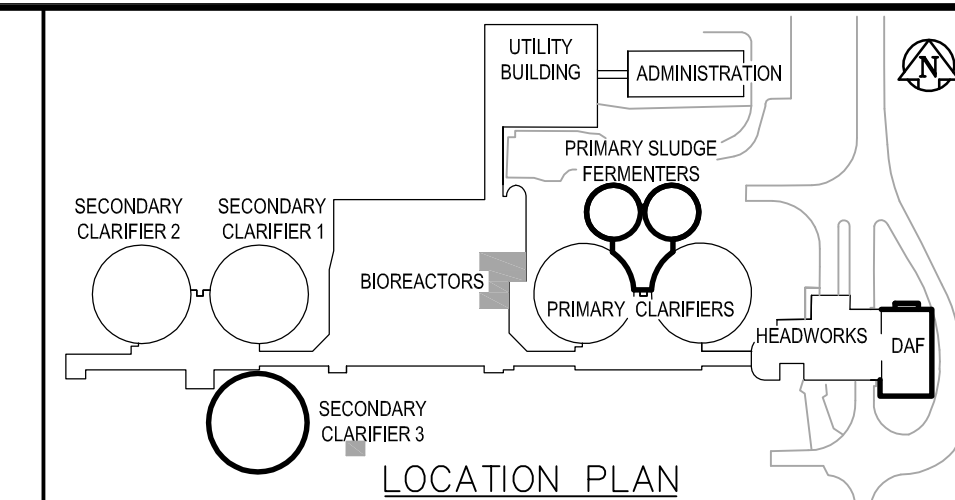
2 SECTION
SM1.01 SCALE 1:100

DRAWING NOTES

- 1 INSTALL NEW EXHAUST FANS, SUPPORTS AND VIBRATION ISOLATORS.
- 2 INSTALL NEW FIRE DAMPERS AND MOTORIZED DAMPERS.
- 3 300x300 RELIEF AIR DUCT RISING TO RELIEF AIR HOOD ON ROOF c/w BACK DRAFT DAMPER. TERMINATE INTAKE OPENING APPROX. 600mm BELOW ROOF DECK.
- 4 PROVIDE 50mm EXTERNAL THERMAL INSULATION FOR A FULL DISTANCE.
- 5 300φ GOOSENECK INTAKE ON ROOF c/w MOTORIZED DAMPER.
- 6 REFRIGERANT LINES DOWN FROM CONDENSING UNIT TO COOLING COIL.
- 7 FLEXIBLE CONNECTION. TYPICAL.
- 8 CONNECT NEW 1075φ EXHAUST INTAKE DUCT TO EXISTING 850x400 DUCT.
- 9 650x650 DISCHARGE EXHAUST DUCT. CONNECT INTO EXISTING EXHAUST AIR MAIN.
- 10 CONDENSING UNIT LOCATED BESIDE THE BUILDING ON 600 HIGH METAL STAND SUPPLIED BY MECHANICAL CONTRACTOR.
- 11 DUCT FOR VESTIBULE PRESSURIZATION.
- 12 40φ CONDENSATE DRAIN TO NEAREST FLOOR DRAIN IN MIXED LIQUOR TESTING BUILDING.
- 13 ADD 50mm THERMAL INSULATION TO COMPRESSED AIR PIPE WHERE POSSIBLE SKIN CONTACT EXISTS FROM STANDING ON PLATFORM.
- 14 S780-AHU MOUNTED HIGH TO UNDERSIDE OF CEILING SIMILAR TO T610-AHU.

GENERAL NOTES

1. COORDINATE WITH OTHER TRADES SO AS TO PREVENT CONFLICTS.
2. ALL DUCTWORK SHALL BE SUPPORTED AND SUSPENDED AS PER SPECIFICATIONS AND LOCAL CODES. (SEE DETAILS)
3. PROVIDE ACCESS DOORS TO INSPECT ALL FIRE DAMPERS.



<p>B.M. ELEV.</p>				<p>EarthTech A Tyco International Ltd. Company</p>		<p>ENGINEER'S SEAL</p>		<p>THE CITY OF WINNIPEG WATER AND WASTE DEPARTMENT ENGINEERING DIVISION</p>	
				DESIGNED BY: DC	CHECKED BY: PVL	ORIGINAL SIGNED BY: A. BURACHYNSKY		CITY FILE NUMBER	
				DRAWN BY: DC	APPROVED BY: JEH	2006/04/26		SHEET OF	
				HOR. SCALE: AS NOTED		RELEASED FOR CONSTRUCTION BY: J. VEILLEUX		CITY DRAWING NUMBER	
				VERTICAL SCALE:				CONSULTANT DRAWING NO. SM1.01	
01	21-2006 ADDENDUM 3	06/05/19	LJW	DATE	2005/12/19	DATE	2006/04/26	MECHANICAL AREA S - BIOREACTORS LOWER LEVEL, ELECTRICAL ROOM - VENTILATION PLANS	
00	ISSUED FOR TENDER	06/04/26	DC						
NO. REVISIONS		DATE		BY		DATE			