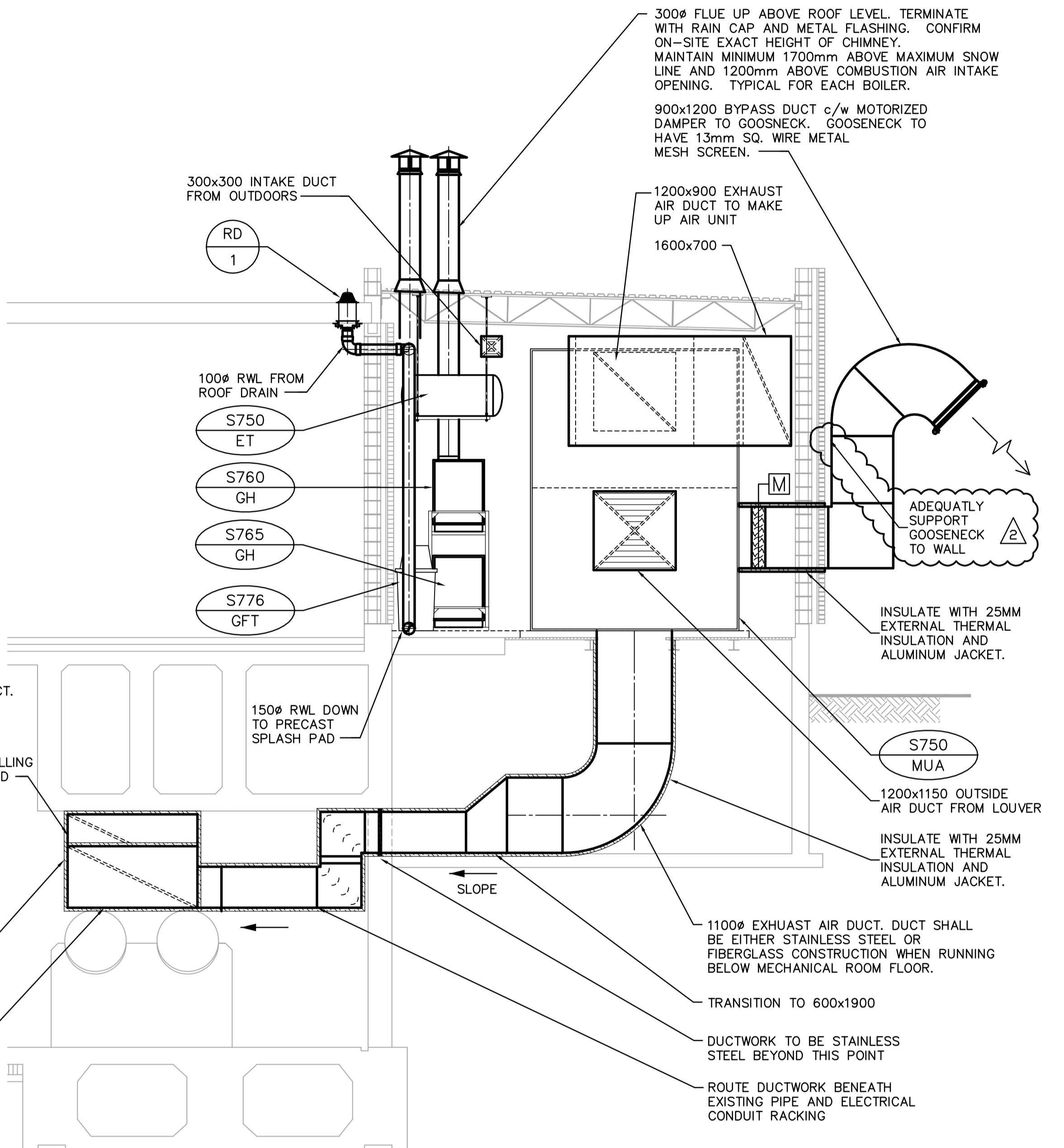


1 SECTION - MECHANICAL ROOM
SM4.02 SCALE 1:50



2 SECTION - MECHANICAL ROOM
SM3.02 SCALE 1:50

- GENERAL NOTES**
- COORDINATE WITH OTHER TRADES SO AS TO PREVENT CONFLICTS.
 - ALL DUCTWORK SHALL BE SUPPORTED AND SUSPENDED AS PER SPECIFICATIONS AND LOCAL CODES. (SEE DETAILS)
 - FOR ROUND ROOF PENETRATIONS SEE DETAIL ON DRAWING LM3.02.



B.M. ELEV.	NO.	REVISIONS	DATE	BY
	02	21-2006 ADDENDUM 6	06/06/30	DC
	01	21-2006 ADDENDUM 3	06/05/19	LJW
	00	ISSUED FOR TENDER	06/04/26	DC

EarthTech
A Tyco International Ltd. Company

DESIGNED BY: AB	CHECKED BY: PVL
DRAWN BY: DL	APPROVED BY: JEH
HOR. SCALE: AS NOTED	
VERTICAL SCALE:	
RELEASED FOR CONSTRUCTION BY: J. VEILLEUX	
DATE: 2005/12/19	DATE: 2006/04/26

ENGINEER'S SEAL
ORIGINAL SIGNED BY
A. BURACHYNSKY
2006/04/26
CONSULTANT DRAWING NO.
SM5.02

THE CITY OF WINNIPEG
WATER AND WASTE DEPARTMENT
ENGINEERING DIVISION

WEWPC
BIOLOGICAL NUTRIENT REMOVAL UPGRADE
CONTRACT 3

MECHANICAL
AREA S - SECONDARY CLARIFIER 3
MECHANICAL ROOM SECTIONS

CITY FILE NUMBER
SHEET OF
CITY DRAWING NUMBER