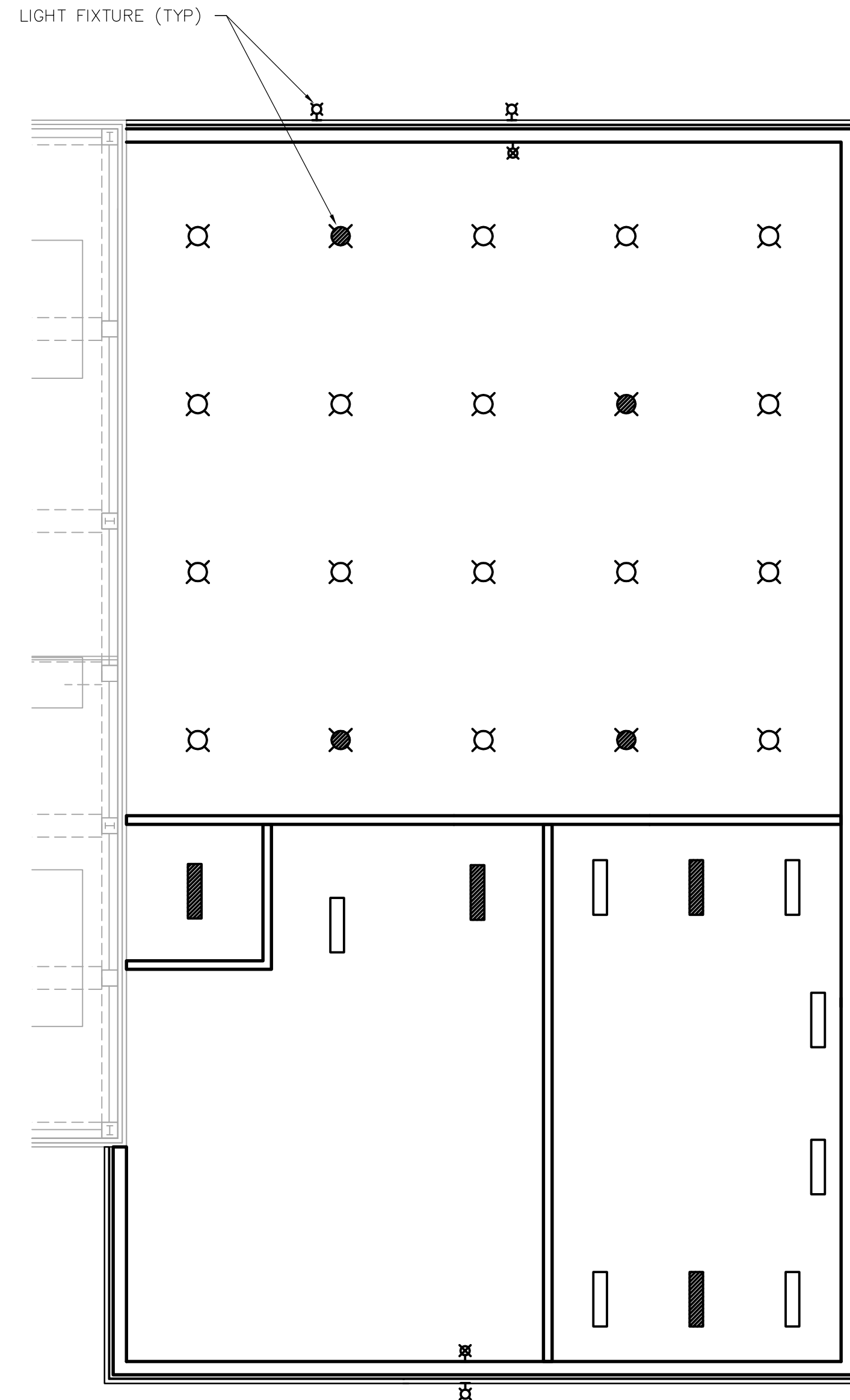
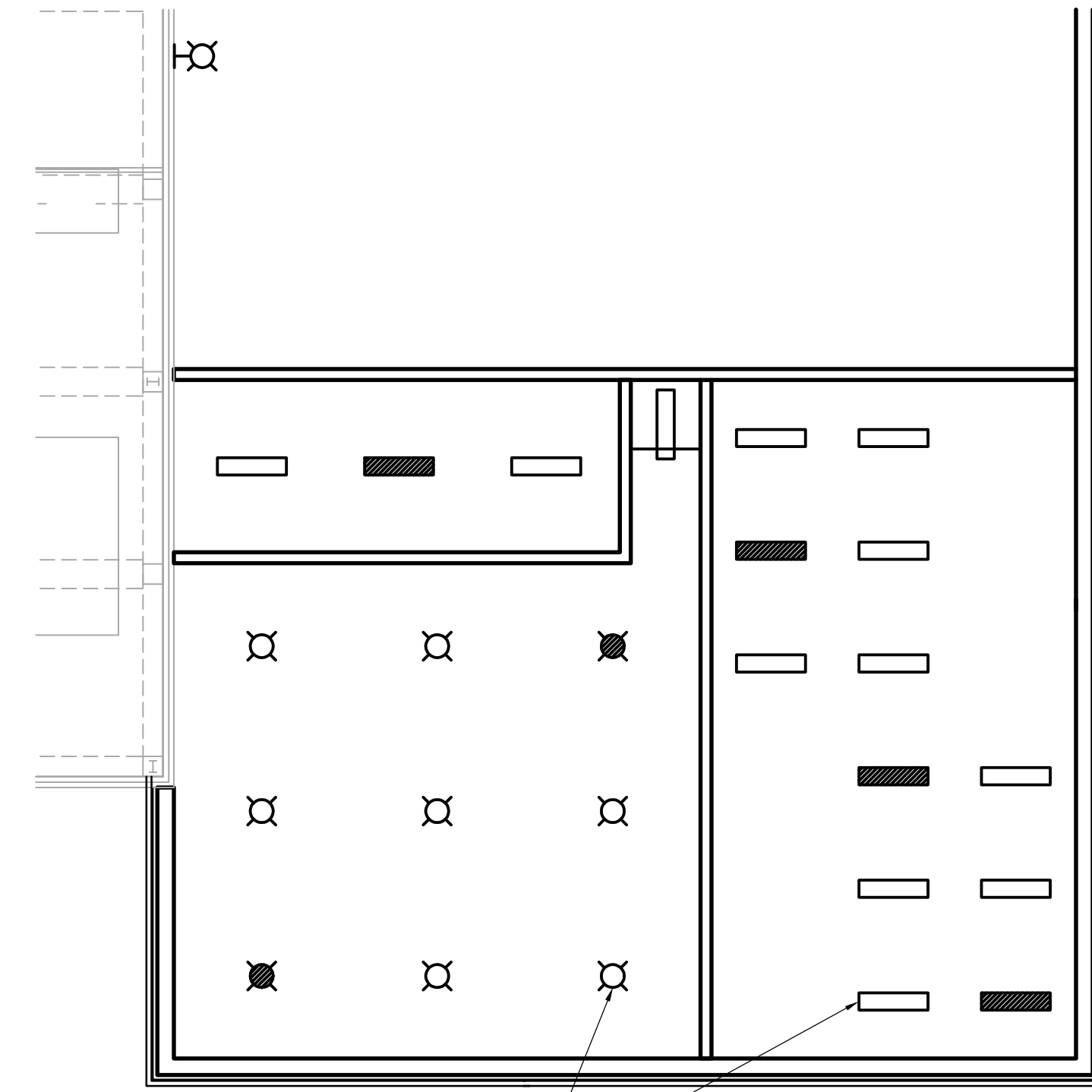


1 MEZZANINE PLAN
TA1.02 1:100



2 MAIN FLOOR REFLECTED CEILING PLAN
TA1.02 1:100

NOTE: SEE ELECTRICAL FOR LIGHTING LOCATION AND LAYOUT



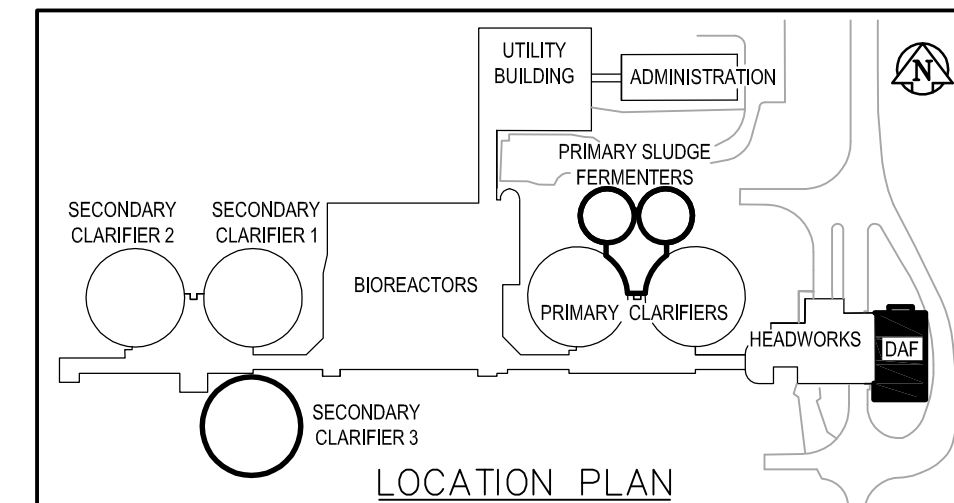
3 MEZZANINE REFLECTED CEILING PLAN
TA1.02 1:100

DOOR SCHEDULE

DOOR NO	TO ROOM	DOOR				FRAME				HDW GROUP	FIRE RATING	GRILLES	COMMENTS				
		SIZE	SWING	TYPE	MAT	CORE	FINISH	COLOUR	PROFILE					MAT	TYPE	FINISH	COLOUR
D201A	MECHANICAL	45x900x2150	LH	1	HM	HC	PT	A	2	HM	WLD	PT	A	1	45 MIN	N/A	
D201B	EXTERIOR	45x900x2150	RH	1	HM	INSUL	PT	A	1	HM	WLD	PT	A	4	N/A	N/A	BLANK EXTERIOR
D202	ELECTRICAL	45x900x2150	RH	1	HM	HC	PT	A	2	HM	WLD	PT	A	1	45 MIN	N/A	

FINISH SCHEDULE

ROOM NO	ROOM NAME	FLOOR				WALLS								CEILING			COMMENTS					
		FLOORING		BASE		NORTH		EAST		SOUTH		WEST		CEILING								
		MAT	COLOUR	MAT	COL	MAT	FINISH	COLOUR	MAT	FINISH	COLOUR	MAT	FINISH	COLOUR	MAT	FINISH		COLOUR	HGT	AFF		
201	MECHANICAL	EPOXY	A	EPXY COV	A	CB	PT	C	CB	PT	C	CB	PT	C	CB	PT	C	CB	PT	D.GREY	+/-3750	
202	ELECTRICAL	EPOXY	A	EPXY COV	A	CB	PT	C	CB	PT	C	CB	PT	C	CB	PT	C	METAL	PT	D.GREY	+/-3950	



B.M. ELEV. DESIGNED BY: NC CHECKED BY: NC DRAWN BY: LK APPROVED BY: JEH HOR. SCALE: AS NOTED VERTICAL SCALE: AS NOTED NO. REVISIONS DATE BY	EarthTech A Tyco International Ltd. Company		ENGINEER'S SEAL ORIGINAL SIGNED BY: N. COOPER DATE: 2006/04/26	THE CITY OF WINNIPEG WATER AND WASTE DEPARTMENT ENGINEERING DIVISION WEWPC BIOLOGICAL NUTRIENT REMOVAL UPGRADE CONTRACT No. 3 ARCHITECTURAL AREA T - DAF THICKENER BUILDING MEZZANINE FLOOR AND REF CEILING PLANS, & SCHEDULES	CITY FILE NUMBER SHEET 2 OF 6 CITY DRAWING NUMBER
	03 21-2006 ADDENDUM 6 06/06/30 LK 02 21-2006 ADDENDUM 02 06/06/02 LK 01 21-2006 ADDENDUM 3 06/05/25 LK 00 ISSUED FOR TENDER 06/04/26 LK	RELEASED FOR CONSTRUCTION BY: J. VEILLEUX DATE: 2006/01/03 DATE: 2006/04/26	CONSULTANT DRAWING NO. TA1.02		