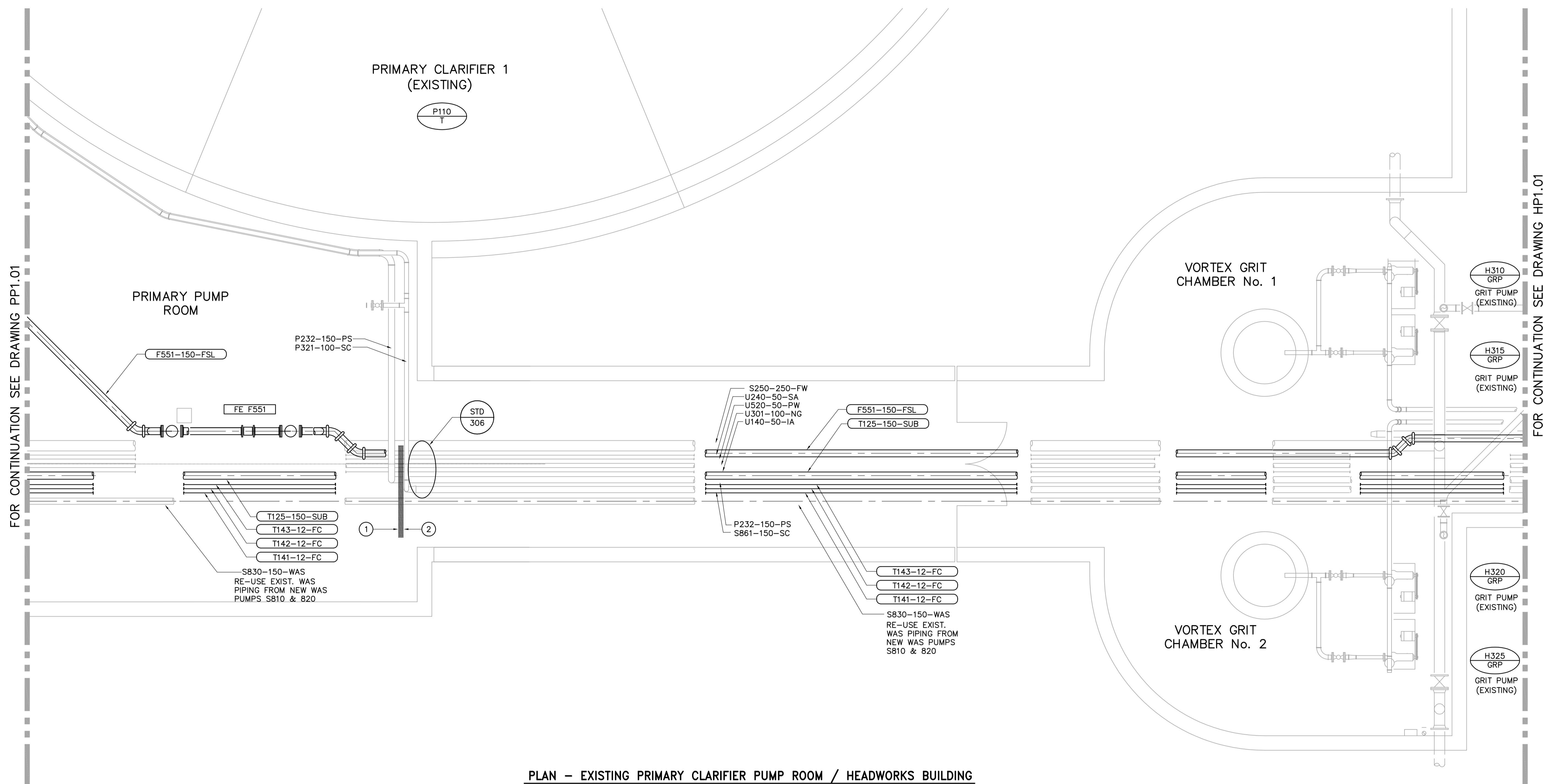
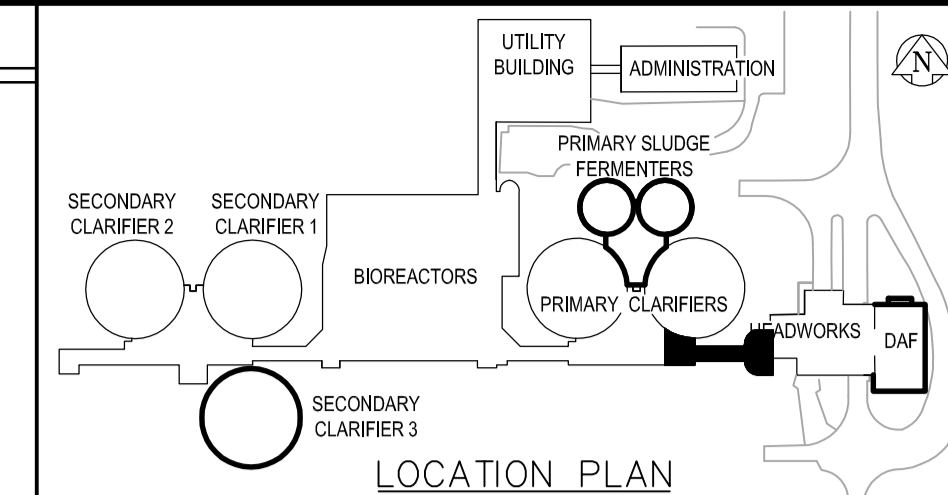


DRAWING NOTES

- ① REMOVE EXISTING 150Ø SCUM LINE (S861-150-SC) FROM SECONDARY CLARIFIERS (REFER TO DWG. SP0.02) TO POINT OF TIE-IN TO THE EXISTING 100Ø SCUM LINE FROM THE PRIMARY CLARIFIERS.
- ② EXISTING 150 Ø SCUM LINE (S861-150-SC) TO REMAIN IN OPERATION. CAP PIPE REMOVED AS NOTED IN ①.



PLAN - EXISTING PRIMARY CLARIFIER PUMP ROOM / HEADWORKS BUILDING
1:50



B.M. ELEV.			ENGINEER'S SEAL		THE CITY OF WINNIPEG WATER AND WASTE DEPARTMENT ENGINEERING DIVISION	CITY FILE NUMBER SHEET OF CITY DRAWING NUMBER	
			DESIGNED BY: YL	CHECKED BY: KM			ORIGINAL SIGNED BY: J.E. HUTCHISON
			DRAWN BY: RI	APPROVED BY: JEH			2006/04/26
			HOR. SCALE: 1:50 VERTICAL SCALE: J. VEILLEUX				RELEASED FOR CONSTRUCTION BY: J. VEILLEUX CONSULTANT DRAWING NO. HP1.02
00	ISSUED FOR TENDER	06/04/26	SRP	2005/10/06	2006/04/26	WEWPC BIOLOGICAL NUTRIENT REMOVAL UPGRADE CONTRACT 3 PROCESS AREA H - HEADWORKS PLAN	