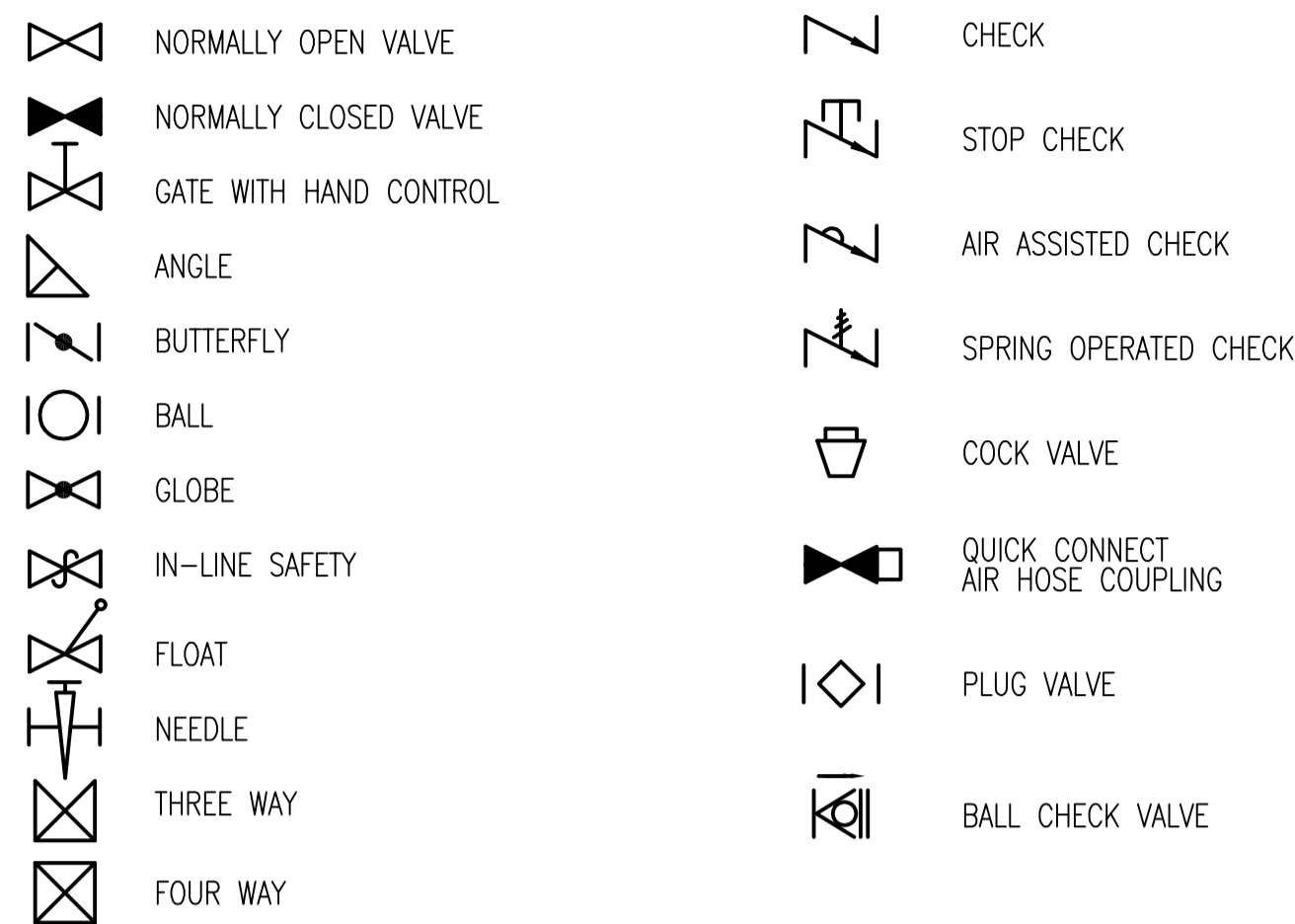
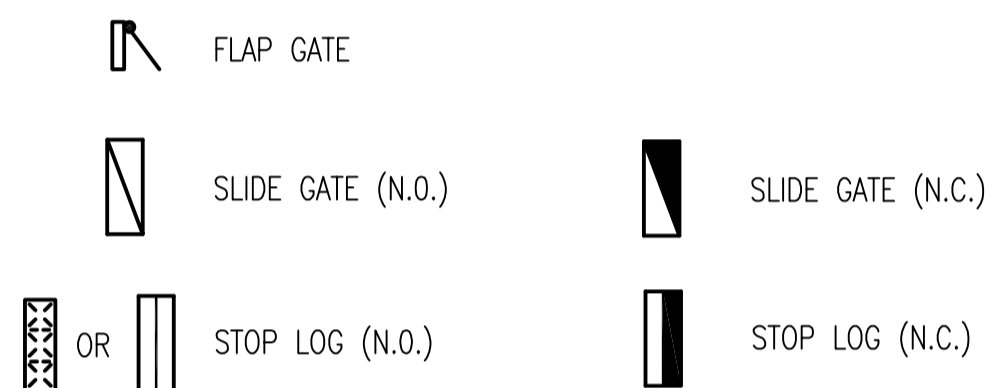


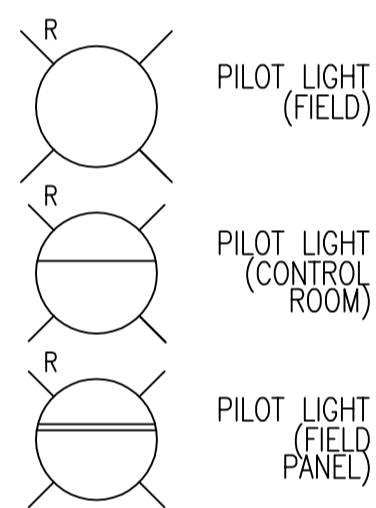
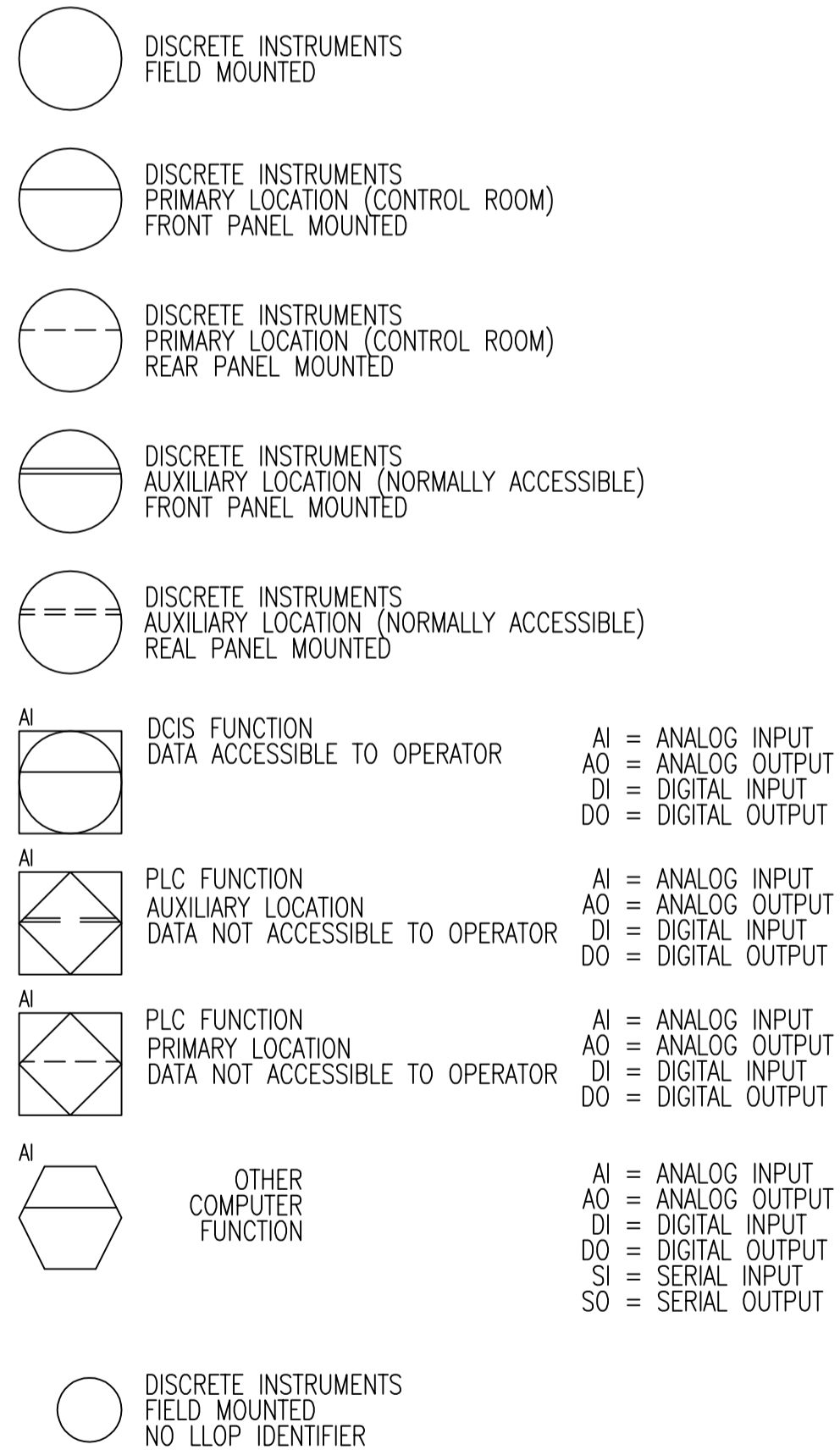
**VALVE SYMBOLS**



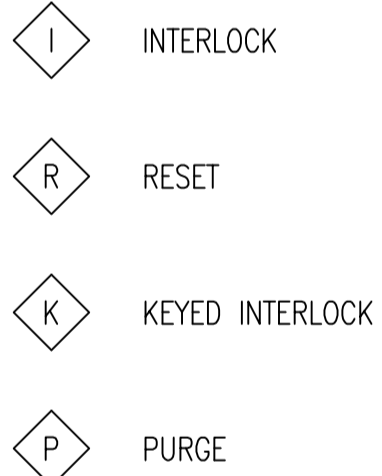
**GATE SYMBOLS**



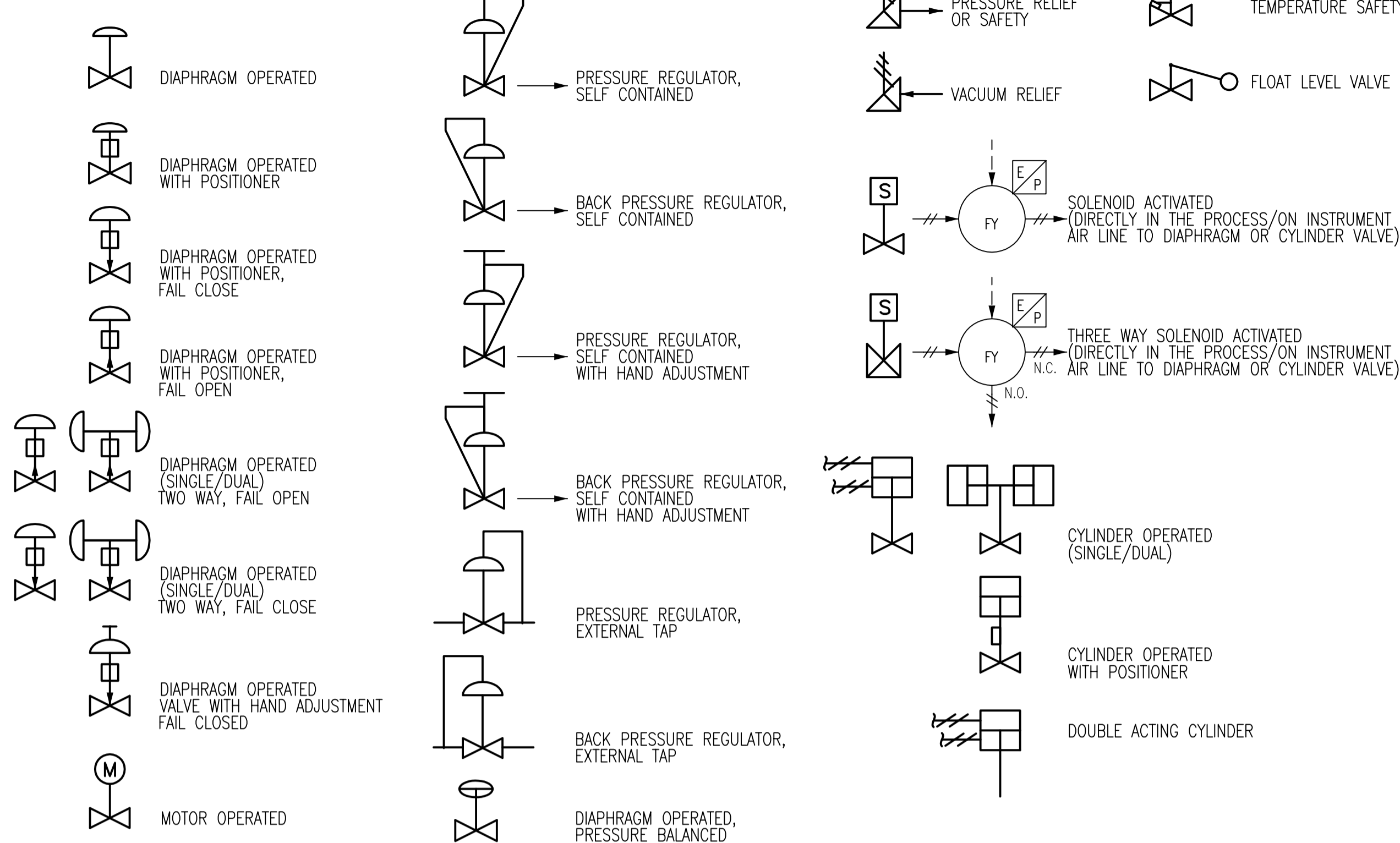
**INSTRUMENT SYMBOLS**



W = WHITE  
R = RED  
G = GREEN  
A = AMBER  
B = BLUE



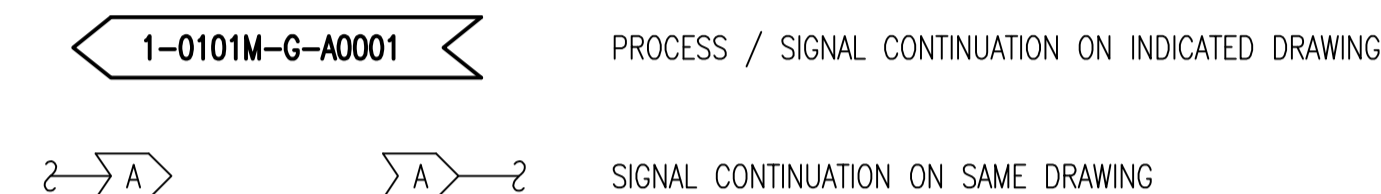
**ACTUATOR SYMBOLS**



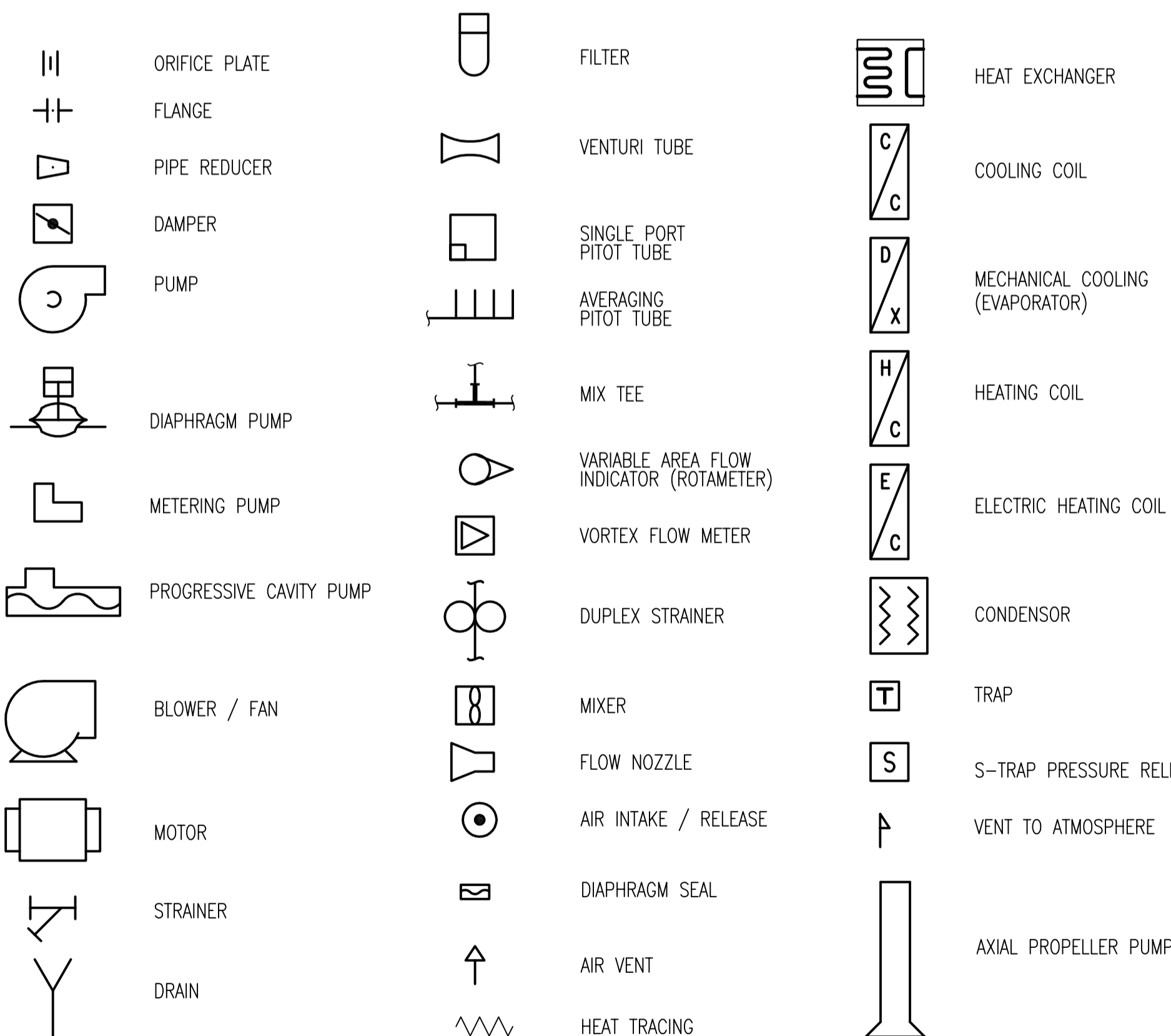
**PID STANDARDS**

- DRAWINGS UTILIZE CITY OF WINNIPEG STANDARDS FOR BORDER AND TITLE BLOCK. ALL DRAWINGS ARE PRODUCED ON AUTOCAD (LATEST REV., R2000 OR LATER).
- ALL UNITS ARE IN METRIC, EXCEPT AS NOTED OTHERWISE. ALL DIMENSIONS SHOWN ARE IN MILLIMETERS (mm).
- DRAWING CONTENT GENERALLY CONFORMS WITH TO ISA-5.1 STANDARD. AN EXCEPTION REGARDING EQUIPMENT TAGGING HAS BEEN MADE TO ALLOW BETTER CONFORMITY IN NAMING.
- PID'S INDICATE MAJOR PROCESS PIPING AND EQUIPMENT AND ASSOCIATED LOCAL INSTRUMENTATION, DCS AND OTHER PROCESS I/O.
- EQUIPMENT INCLUDING VESSELS, DRUMS, EXCHANGERS, HEATERS, PUMPS, COMPRESSORS, ETC. ARE ARRANGED IN SEQUENCE WITH PRINCIPLE FUNCTIONS AND FLOWS.
- ALL MAJOR EQUIPMENT INCLUDING PUMPS, COMPRESSORS, TANKS, ETC. ARE LABELED AS TO FUNCTION WITH DESIGN SIZES AND RATINGS.
- ALL PROCESS LINES ARE LABELED ACCORDING TO FUNCTION AND SIZE UTILIZING SYSTEM CODES DEFINED HEREIN.
- EACH SYSTEM INTERCONNECTION POINT BETWEEN DRAWINGS IS LABELED WITH A SOURCE DRAWING NUMBER OR DESTINATION DRAWING NUMBER. ARROWS ON PROCESS PIPING INDICATE DIRECTION OF FLOW BETWEEN DRAWINGS.

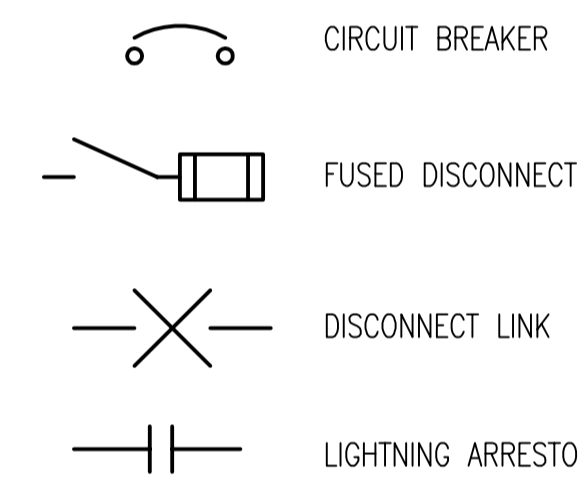
**CONNECTING ARROWS**



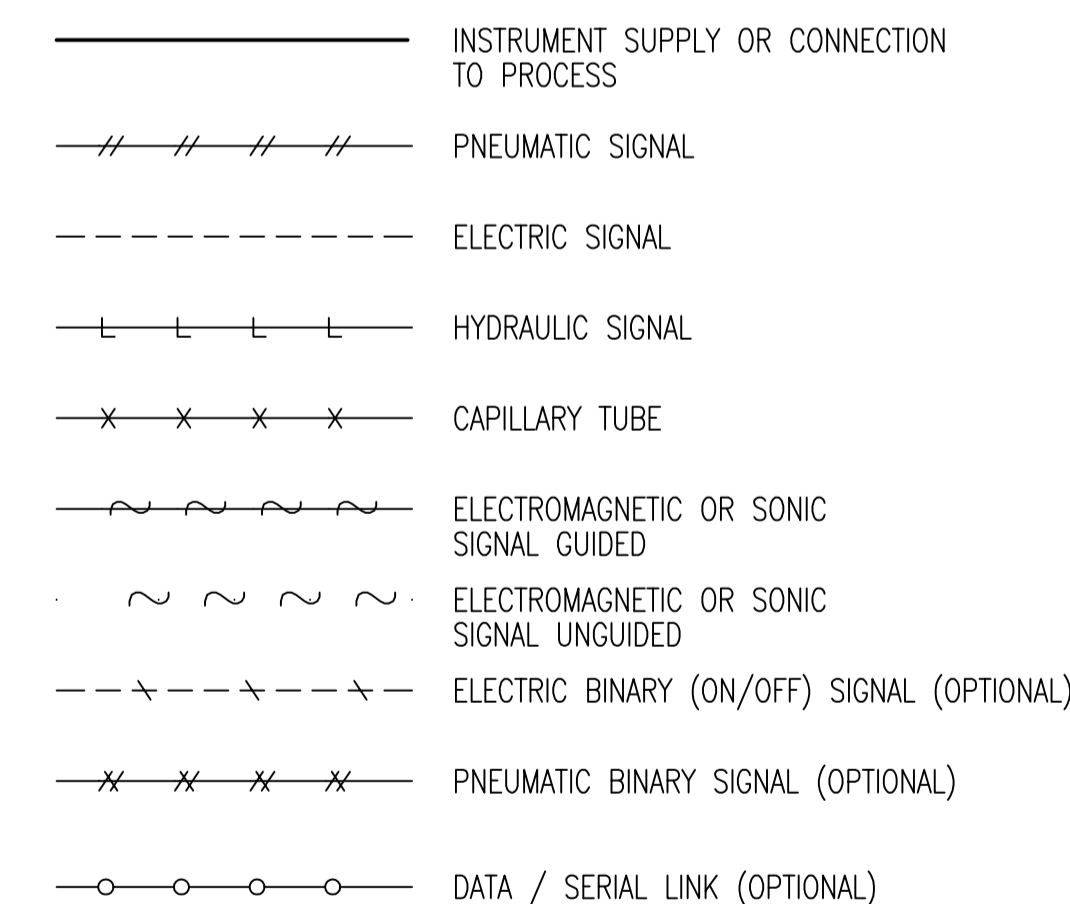
**ACCESSORY DEVICE SYMBOLS**



**ELECTRICAL SYMBOLS**



**INSTRUMENT LINE SYMBOLS**



B.M. ELEV. DESIGNED BY: CGL DRAWN BY: LAE HOR. SCALE: NTS VERTICAL SCALE: NO. REVISIONS DATE: 06/04/21 BY: JBC	EarthTech A Tyco International Ltd. Company		ENGINEER'S SEAL ORIGINAL SIGNED BY: J.E. HUTCHISON 2006/04/26	THE CITY OF WINNIPEG WATER AND WASTE DEPARTMENT ENGINEERING DIVISION WEWPC BIOLOGICAL NUTRIENT REMOVAL UPGRADE CONTRACT 3 GENERAL AREA L - GENERAL AND SITEWORKS LEGEND AND ABBREVIATIONS	CITY FILE NUMBER SHEET OF CITY DRAWING NUMBER
	CHECKED BY: PRB APPROVED BY: JEH RELEASED FOR CONSTRUCTION BY: J. VEILLEUX DATE: 2006/04/26	CONSULTANT DRAWING NO. LP0.01			