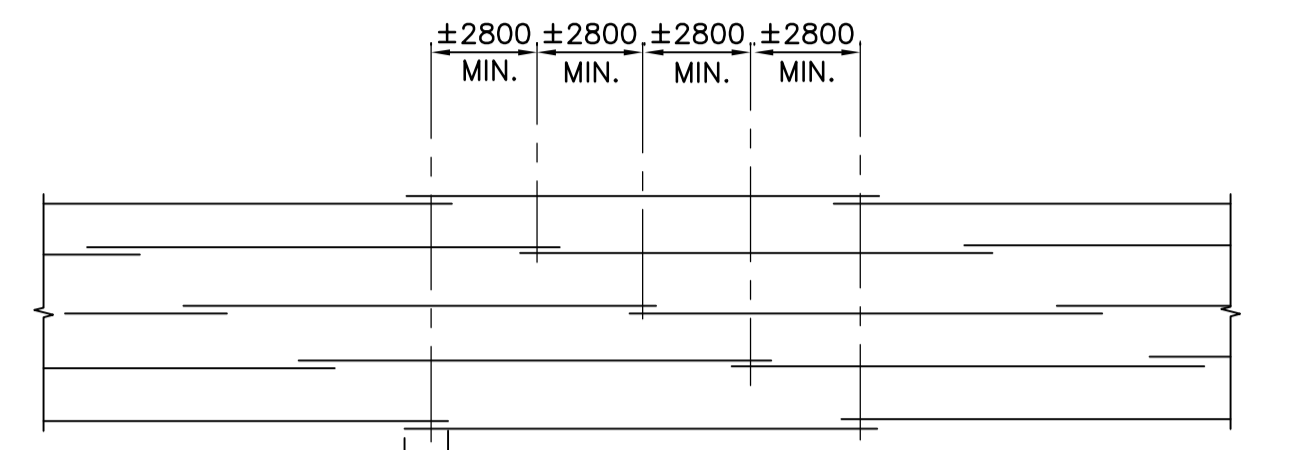


EXTRA REINFORCING AROUND PIPE UP TO 1250Ø MAX.



ELEVATION

TYPICAL REINFORCING AROUND OPENINGS IN CONCRETE SLAB OR WALL

A
STD
N.T.S.

1. NUMBER OF REINFORCING BARS TO BE CUT AT OPENING TO BE KEPT AT A MINIMUM. DEFLECT AS MANY BARS AS POSSIBLE AROUND OPENING.
2. REINFORCING BARS TO BE KEPT MINIMUM 50 CLEAR OF OPENING.
3. CIRCULAR OPENINGS TO BE TREATED IN SAME MANNER AS RECTANGULAR UNLESS OTHERWISE DETAILED.

SPLICING OF HORIZONTAL STEEL IN CIRCULAR TANKS

B
STD
N.T.S.



B.M. ELEV.			
DESIGNED BY	ARA	CHECKED BY	
DRAWN BY	NDH	APPROVED BY	JEH
HOR. SCALE:		RELEASED FOR CONSTRUCTION BY:	J. VEILLEUX
VERTICAL SCALE:		DATE	2006/04/26
ISSUED FOR TENDER	06/04/26	DATE	2006/04/26
NO. REVISIONS		DATE	2006/04/26

EarthTech
A Tyco International Ltd. Company

DESIGNED BY: ARA
DRAWN BY: NDH
HOR. SCALE: [blank]
VERTICAL SCALE: [blank]

CHECKED BY: [blank]
APPROVED BY: JEH
RELEASED FOR CONSTRUCTION BY: J. VEILLEUX
DATE: 2006/04/26

ENGINEER'S SEAL
ORIGINAL SIGNED BY: J. BETKE
2006/04/26
CONSULTANT DRAWING NO. LS1.03

THE CITY OF WINNIPEG
WATER AND WASTE DEPARTMENT
ENGINEERING DIVISION

WEWPCC
BIOLOGICAL NUTRIENT REMOVAL UPGRADE
CONTRACT 3

STRUCTURAL
AREA L - GENERAL AND SITEWORKS
STANDARD DETAILS

CITY FILE NUMBER [blank]
SHEET [blank] OF [blank]
CITY DRAWING NUMBER [blank]