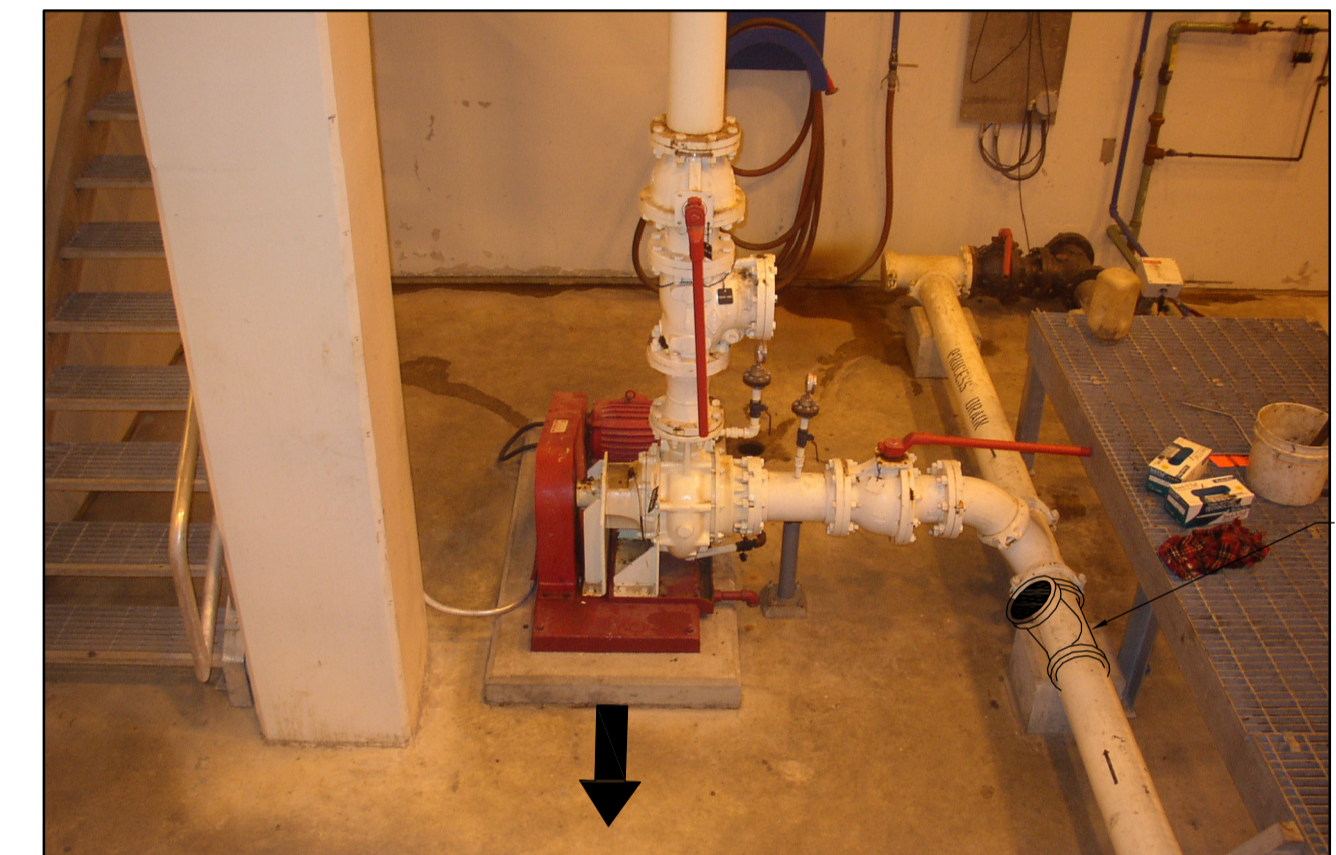


**A** FIGURE - EXISTING SCUM PIPING  
NTS



**B** FIGURE - EXISTING DEWATERING PUMP  
NTS

**DRAWING NOTES**

- ① NEW OPENING/ACCESSWAY INTO FERMENTER PUMP ROOM. REFER TO STRUCTURAL DRAWINGS.
- ② RELOCATE EXISTING CONTROLS TO WEST WALL INSIDE ROOM. REFER TO FIGURE A.
- ③ RELOCATE EXISTING PIPING AND VALVING ABOVE NEW OPENING INTO FERMENTER PUMP ROOM (APPROXIMATELY 3250mm ABOVE GROUND). REFER TO FIGURE A.
- ④ RELOCATE EXISTING PUMP TO CENTRELINE OF EXISTING HEADER. EXTEND CONCRETE PAD AND MODIFY PIPING TO SUIT NEW INSTALLATION. REFER TO FIGURE B, SHOWING EXISTING DEWATERING PUMP.
- ⑤ REMOVE EXISTING WAS PIPING AND VALVING AS SHOWN. CAP PIPE TO MAINTAIN FUNCTION OF 150-WAS MAIN LINE.



B.M. ELEV.			
DESIGNED BY	YL	CHECKED BY	KM
DRAWN BY	PJY	APPROVED BY	JEH
HOR. SCALE:	AS NOTED	RELEASED FOR CONSTRUCTION BY:	J. VEILLEUX
VERTICAL SCALE:		DATE	2005/10/06
NO. REVISIONS		DATE	2006/04/26

**EarthTech**  
A Tyco International Ltd. Company

ENGINEER'S SEAL  
ORIGINAL SIGNED BY  
J.E. HUTCHISON  
2006/04/26

CONSULTANT DRAWING NO.  
PP0.01

**THE CITY OF WINNIPEG**  
WATER AND WASTE DEPARTMENT  
ENGINEERING DIVISION

**WEWPCC**  
BIOLOGICAL NUTRIENT REMOVAL UPGRADE  
CONTRACT 3

CITY FILE NUMBER  
SHEET OF  
CITY DRAWING NUMBER

PROCESS  
AREA P - PRIMARY CLARIFIERS  
PUMP ROOM - DEMOLITION PLAN