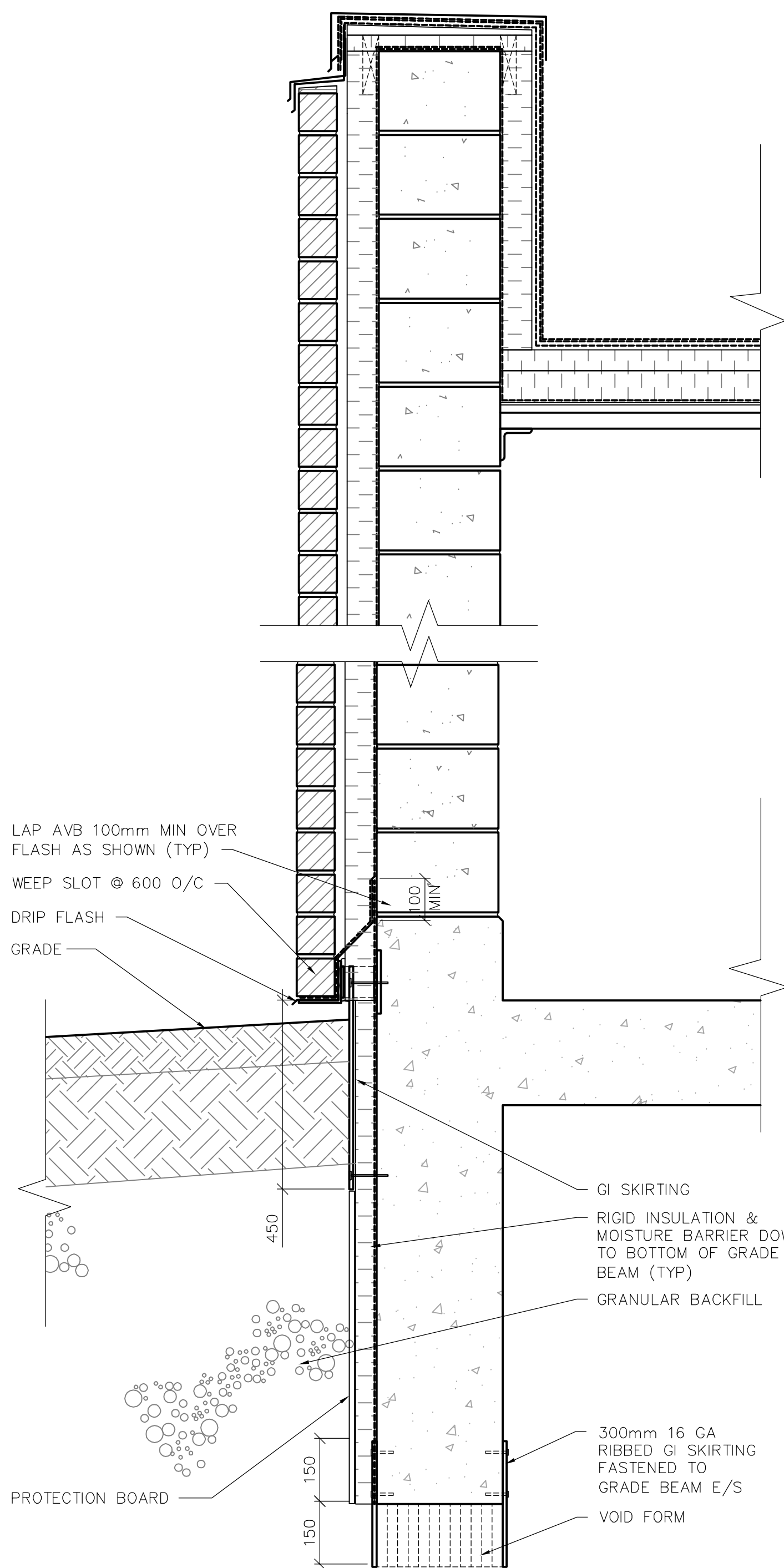
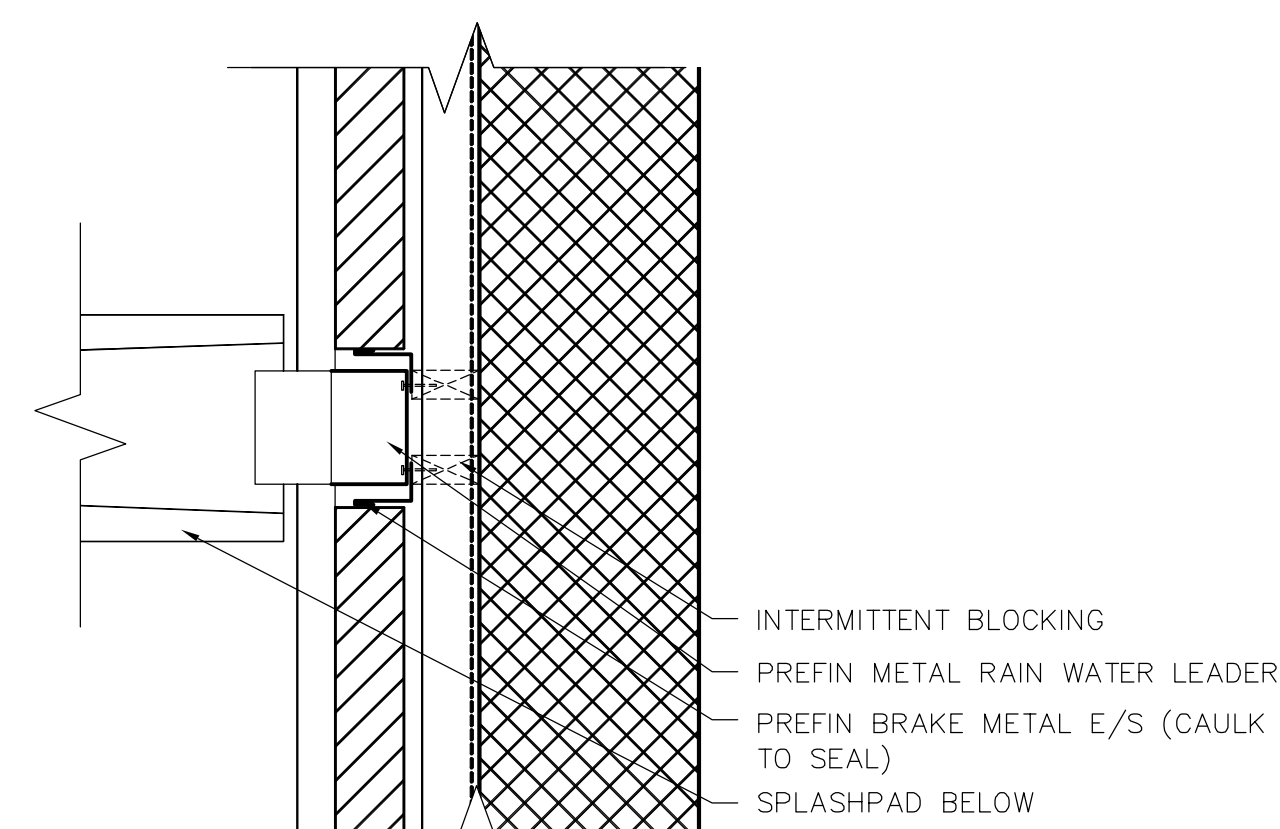


1 TYPICAL WALL SECTION
TA3.01 1:10

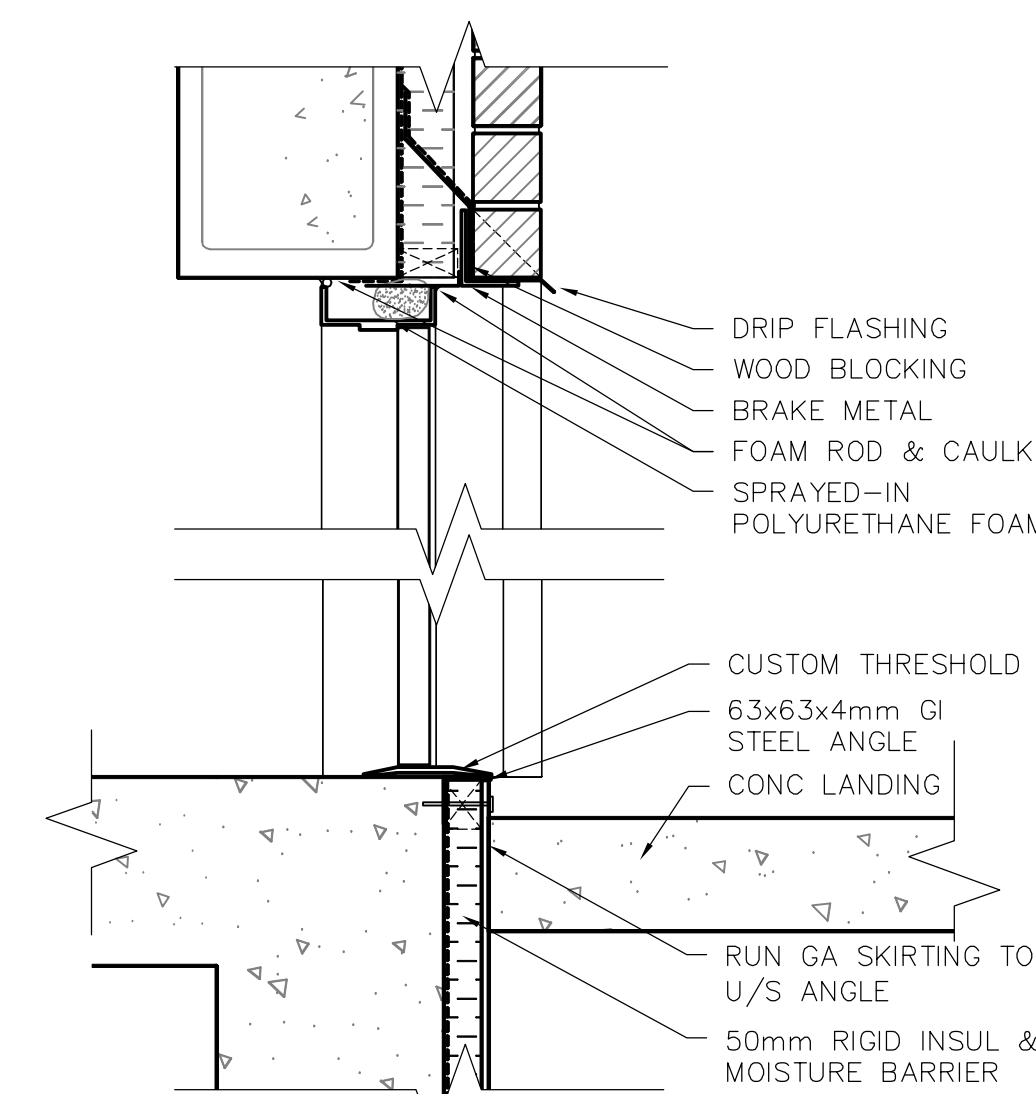
NOTE: SEE BUILDING SECTION 1/A3.01 FOR TYPICAL PARAPET CONSTRUCTION



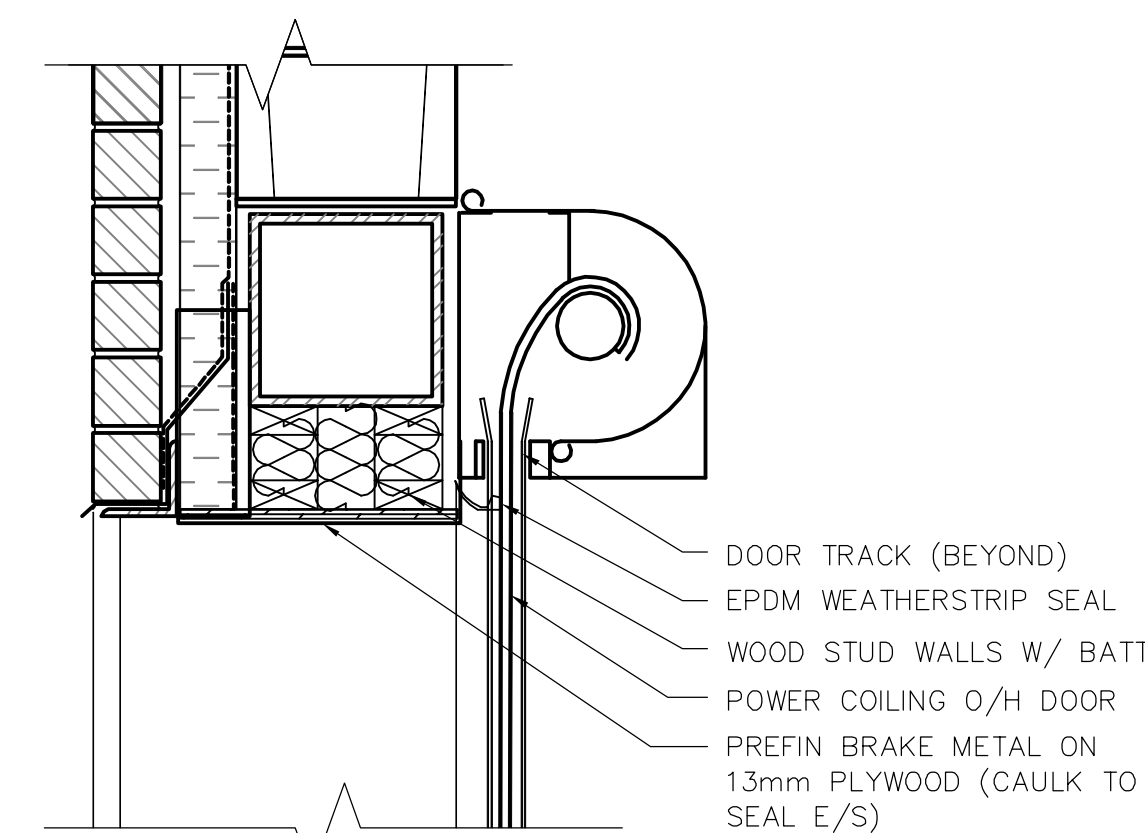
2 TYPICAL WALL SECTION
TA3.01 1:10



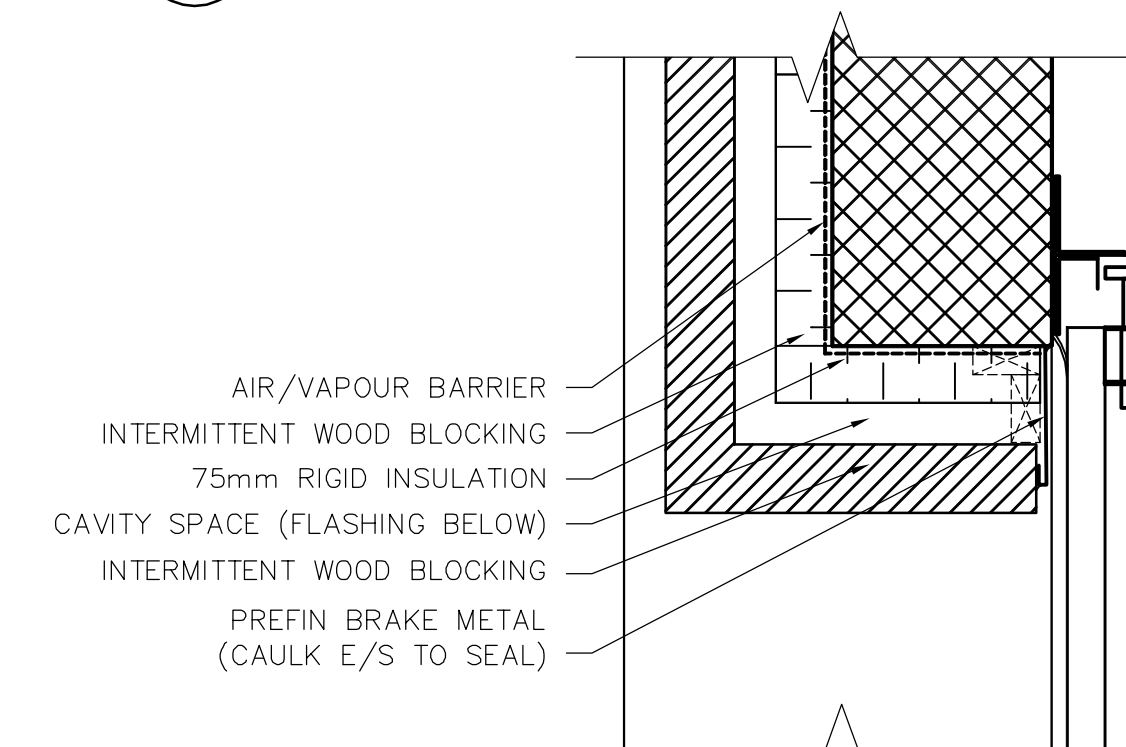
3 RAIN WATER LEADER PLAN DETAIL
TA1.01 1:10



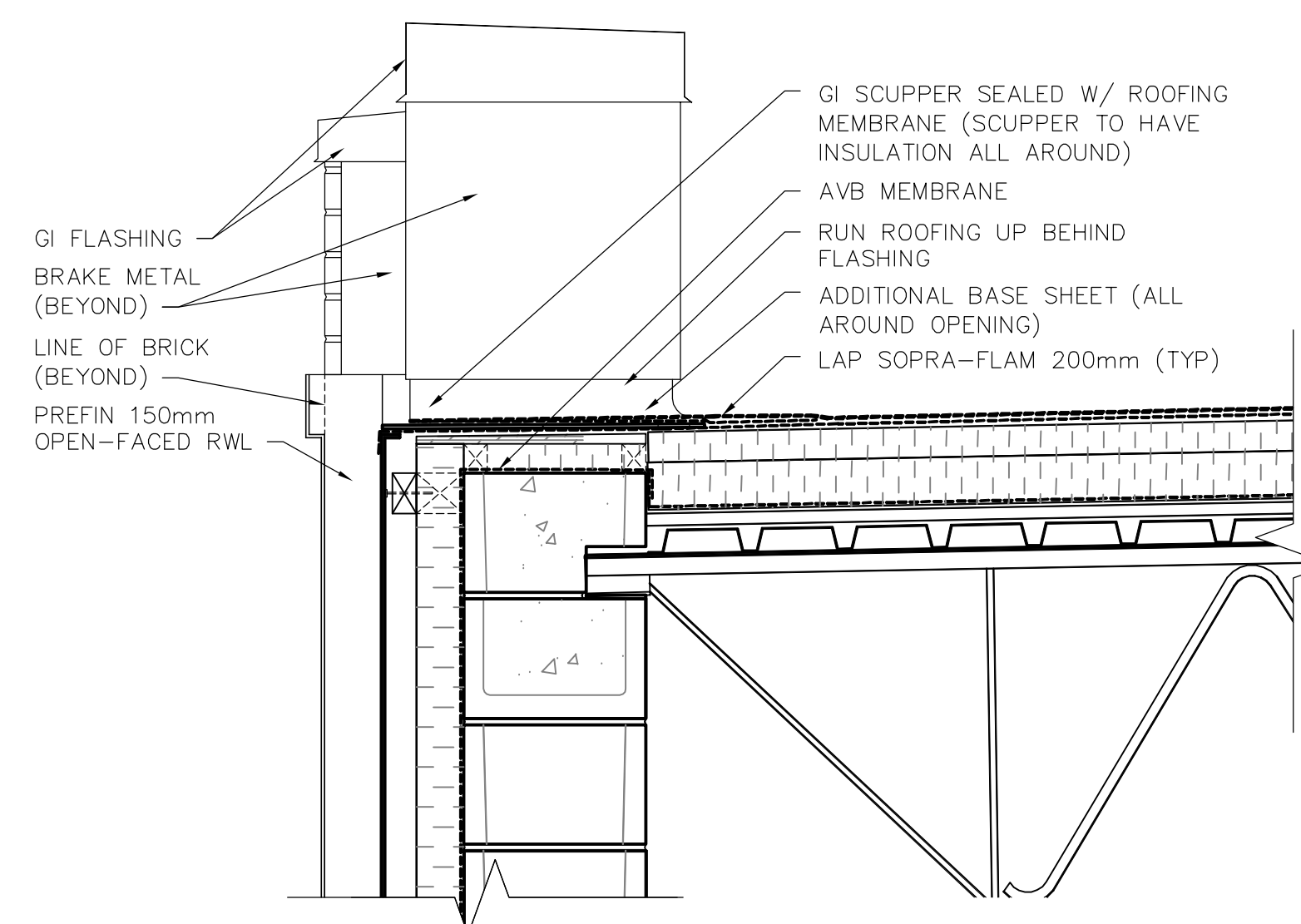
4 DOOR HEAD/SILL SECTION DETAIL
TA1.01 1:10



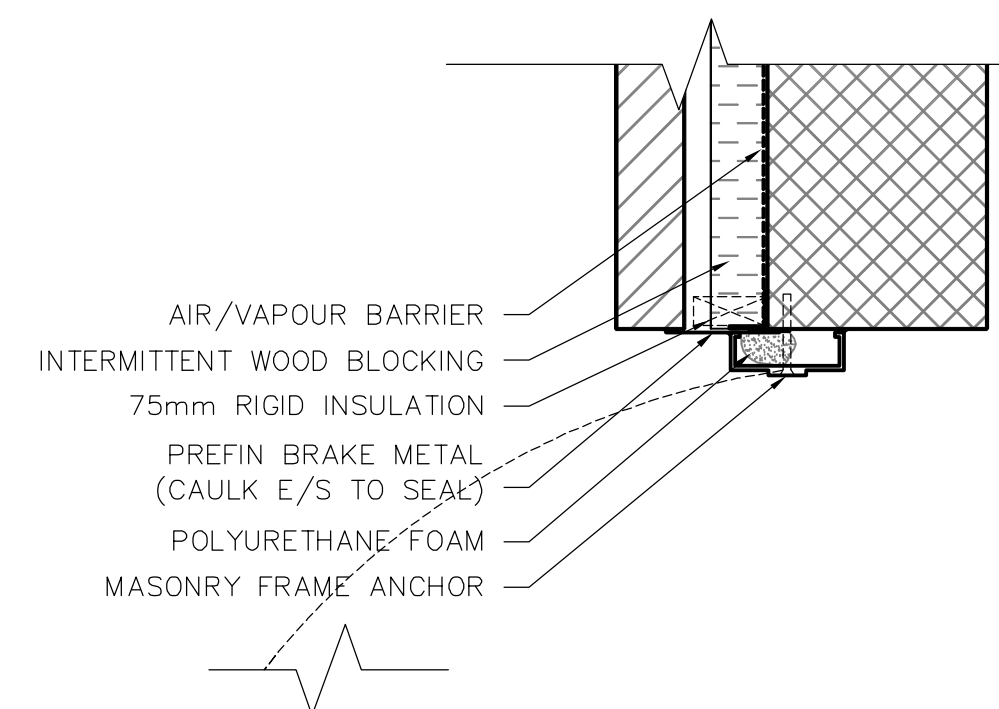
5 O/H DOOR HEAD DETAIL
TA3.01 1:10



6 O/H DOOR JAMB DETAIL
TA1.01 1:10



7 SCUPPER SECTION DETAIL
TA1.01 1:10



8 DOOR JAMB DETAIL (TYP)
TA1.01 1:10



B.M. ELEV.		 A Tyco International Ltd. Company		ENGINEER'S SEAL		 THE CITY OF WINNIPEG WATER AND WASTE DEPARTMENT ENGINEERING DIVISION	
				DESIGNED BY: NC			
		DRAWN BY: LK/AL		CHECKED BY: NC		CITY FILE NUMBER	
		SCALE: AS SHOWN		APPROVED BY: JEH		SHEET 5 OF 6	
		NO. REVISIONS		RELEASED FOR CONSTRUCTION BY: J. VEILLEUX		CITY DRAWING NUMBER	
00 ISSUED FOR TENDER		06/04/26 LK		DATE: 2006/01/24		ARCHITECTURAL AREA T - DAF THICKENER BUILDING DETAILS	
				DATE: 2006/04/26		WEWPC BIOLOGICAL NUTRIENT REMOVAL UPGRADE CONTRACT No. 3	
						CONSULTANT DRAWING NO. TA4.01	