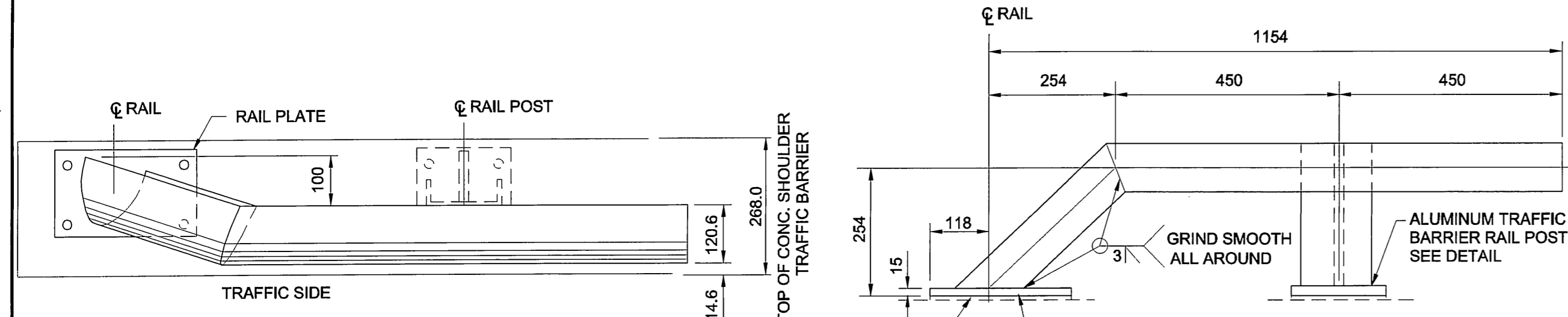


D SIZE 22" x 34" (559mm x 864mm)

PLOT: 06/05/17 10:06:45 AM

LUMA FILE NAME: 0265-378-00_01-C-1004_RX.dwg Saved By: wdenaude

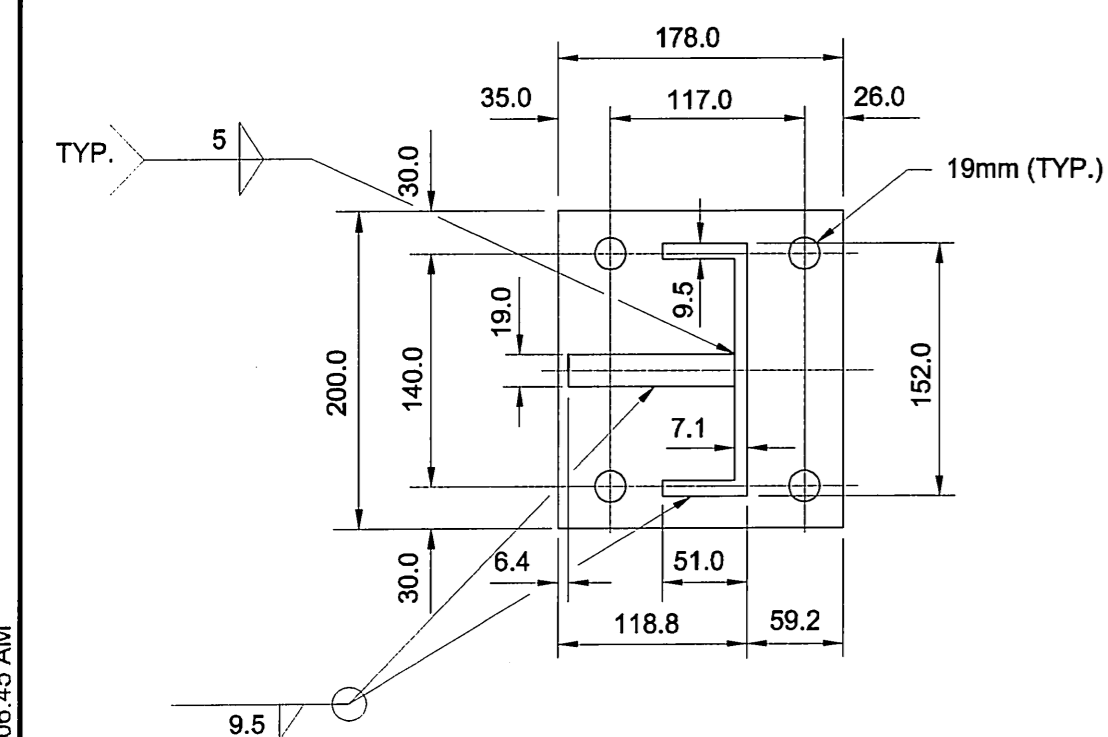


PLAN VIEW

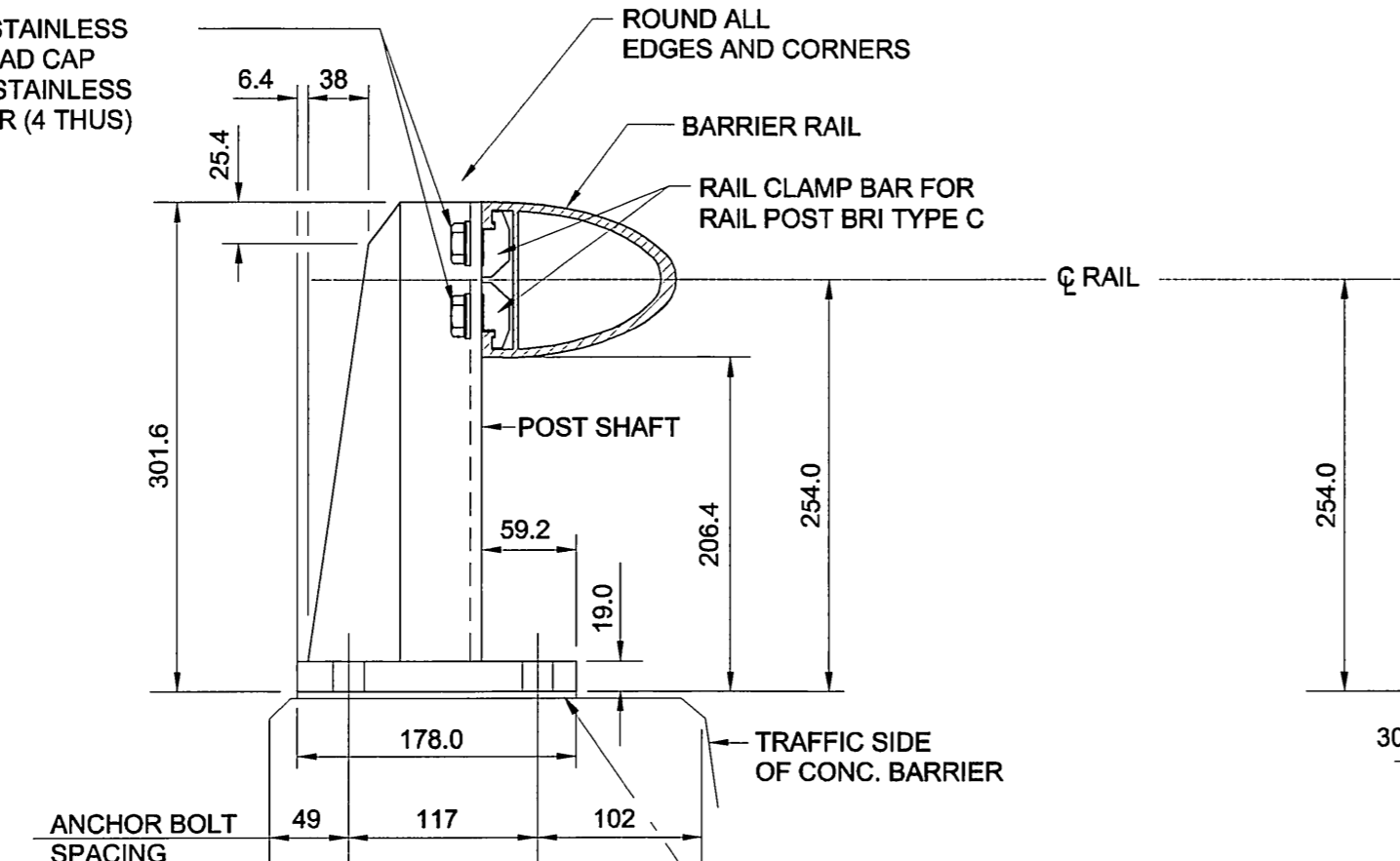
RAIL END SECTION DETAIL

NTS
2 REQUIRED - 1 LEFT HAND (AS SHOWN)
- 1 RIGHT HAND (AS SHOWN)

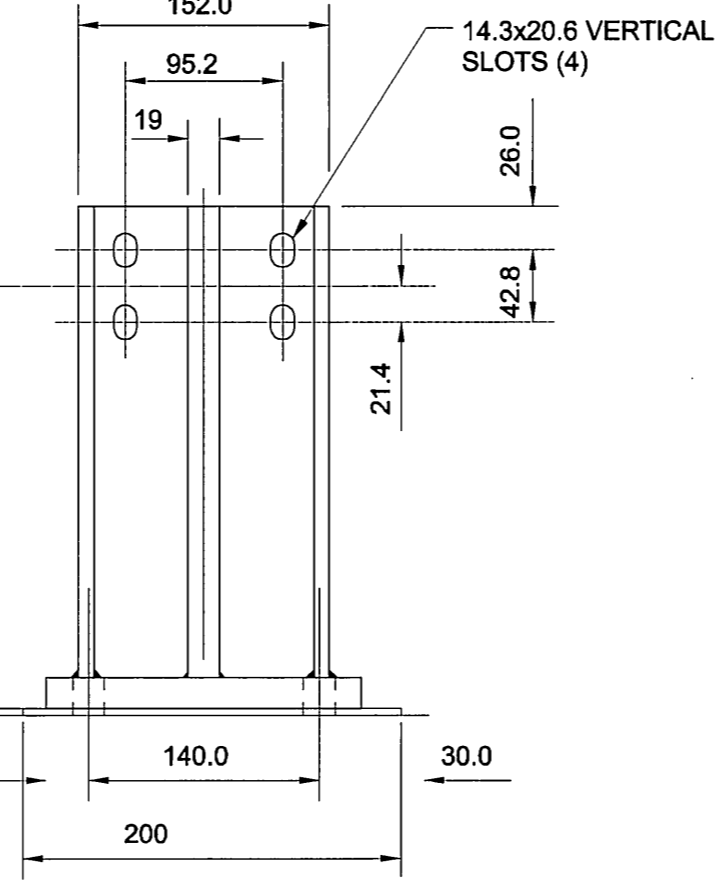
13 x 25 LONG STAINLESS STEEL HEX HEAD CAP SCREW WITH STAINLESS STEEL WASHER (4 THUS)



TOP VIEW



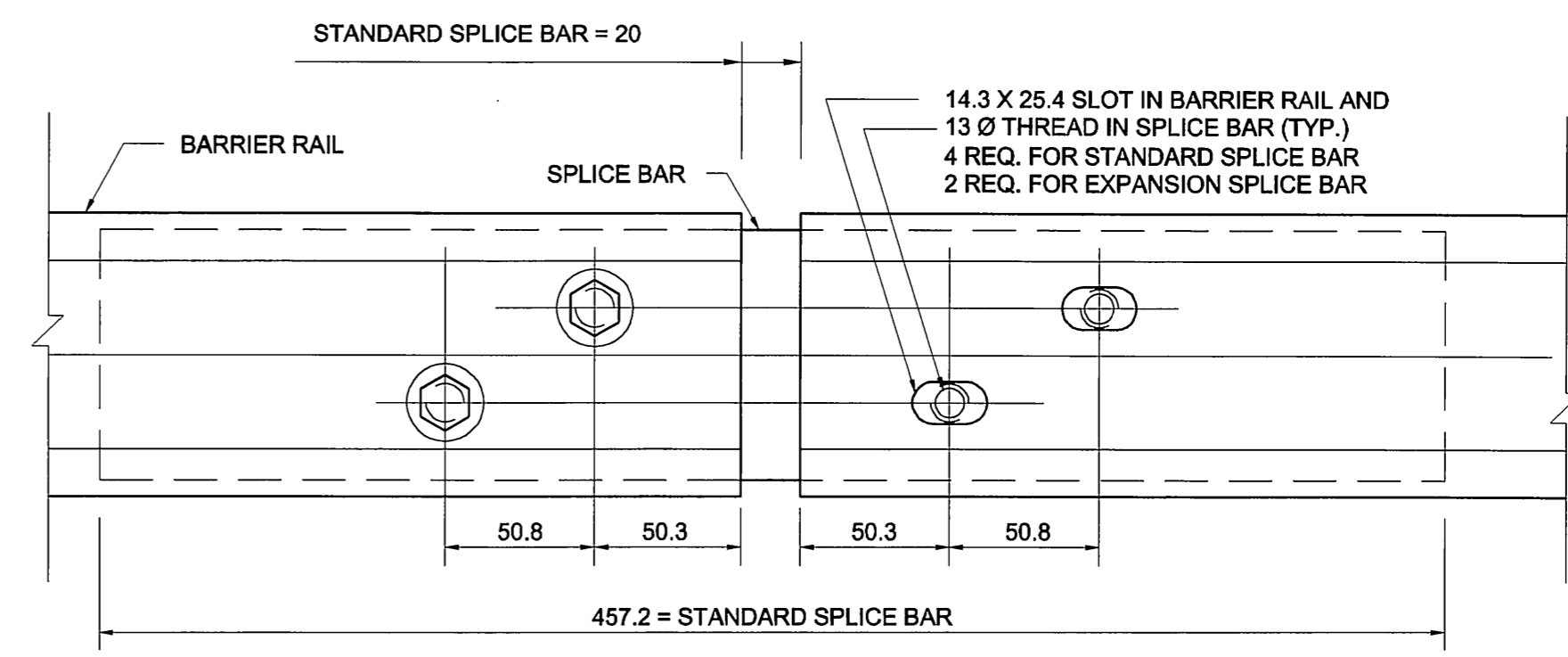
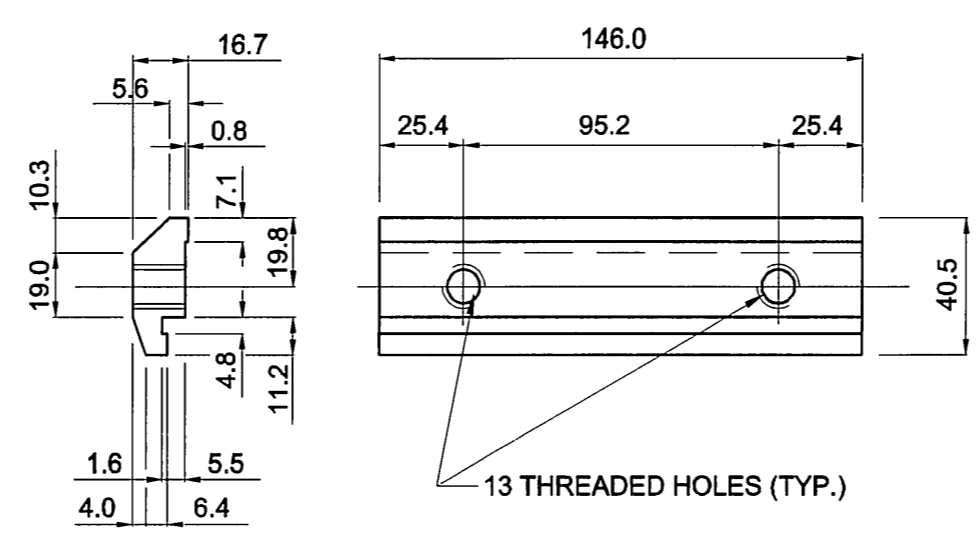
SIDE VIEW



REAR VIEW

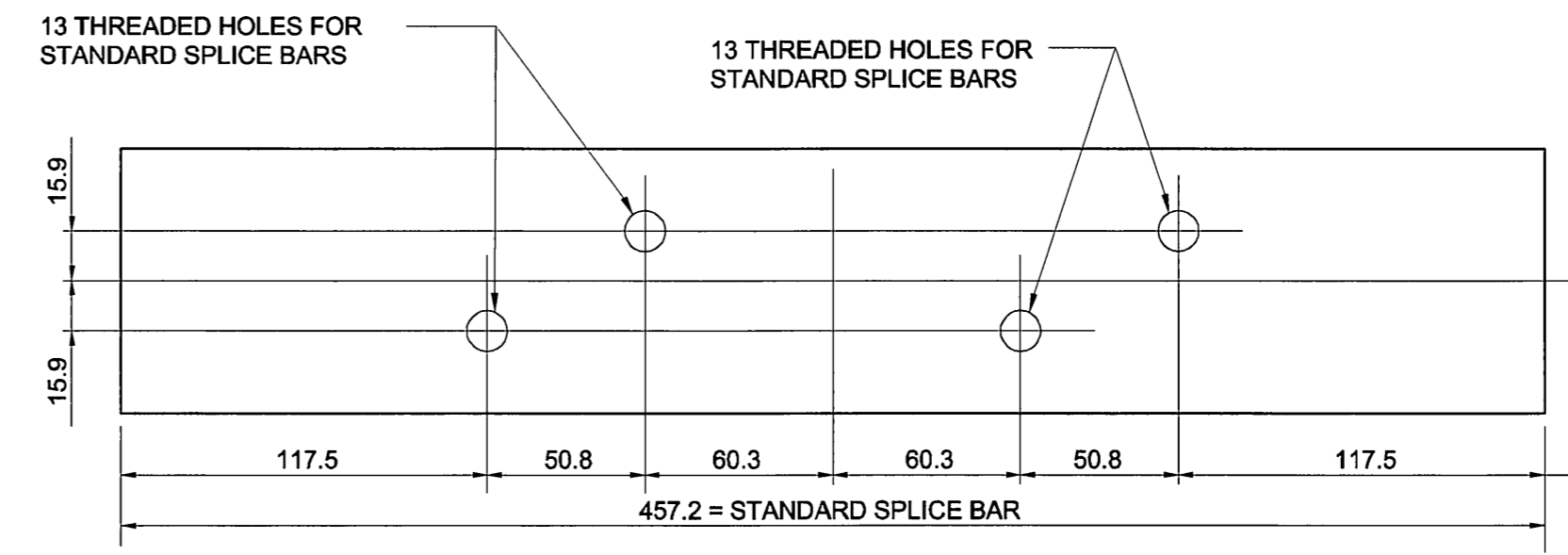
RAIL CLAMP BAR DETAIL

(FOR RAIL POST BRI TYPE C)
NTS



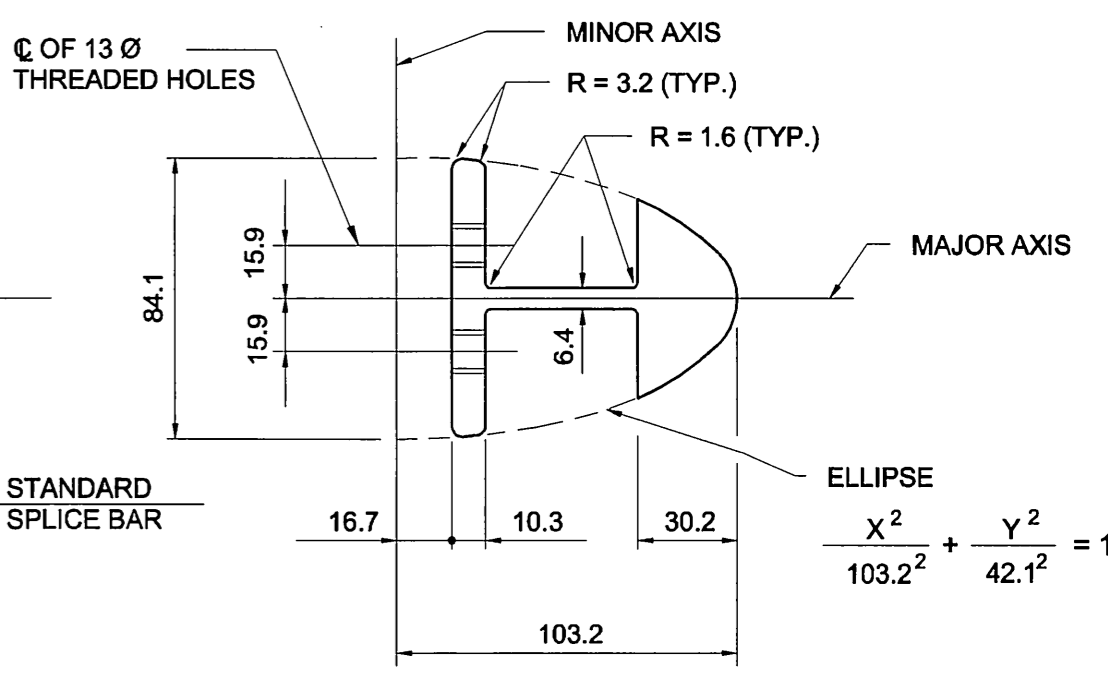
SPLICE BAR TO RAIL ASSEMBLY DETAIL

SCALE 1:2.5



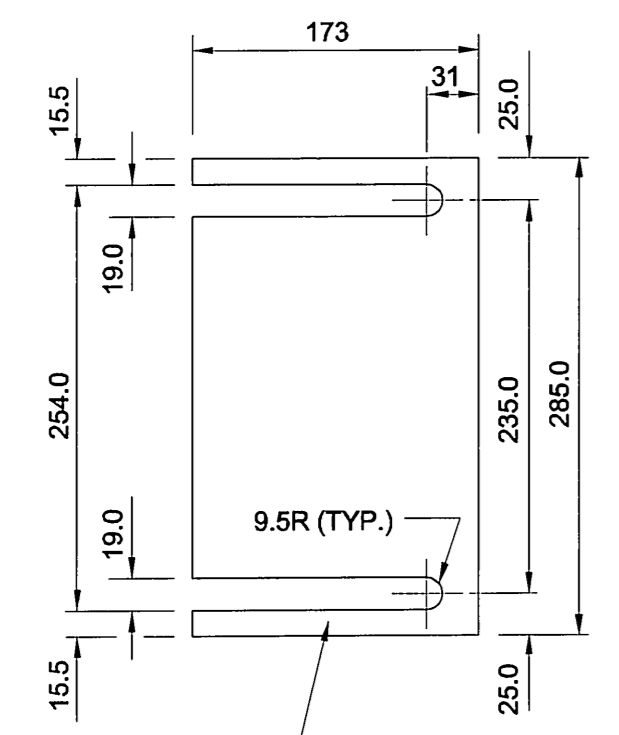
DETAIL OF SPLICE BARS

SCALE 1:2.5

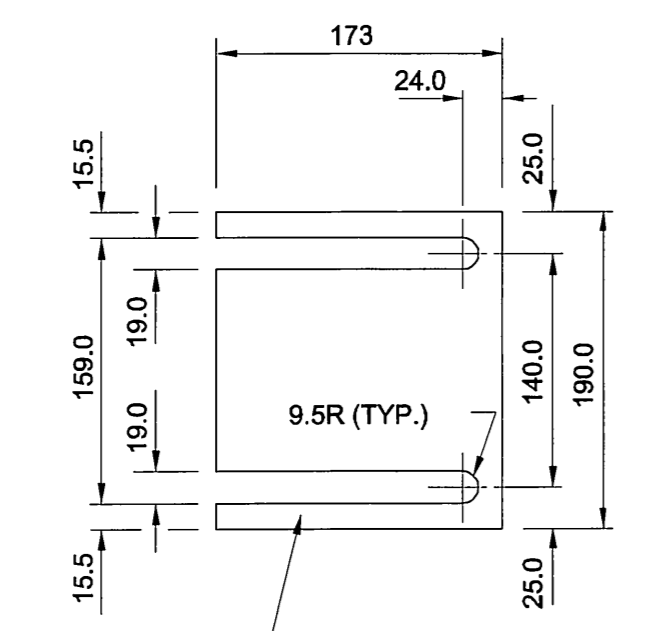


WELDED ALUMINUM TRAFFIC BARRIER RAIL POST DETAIL

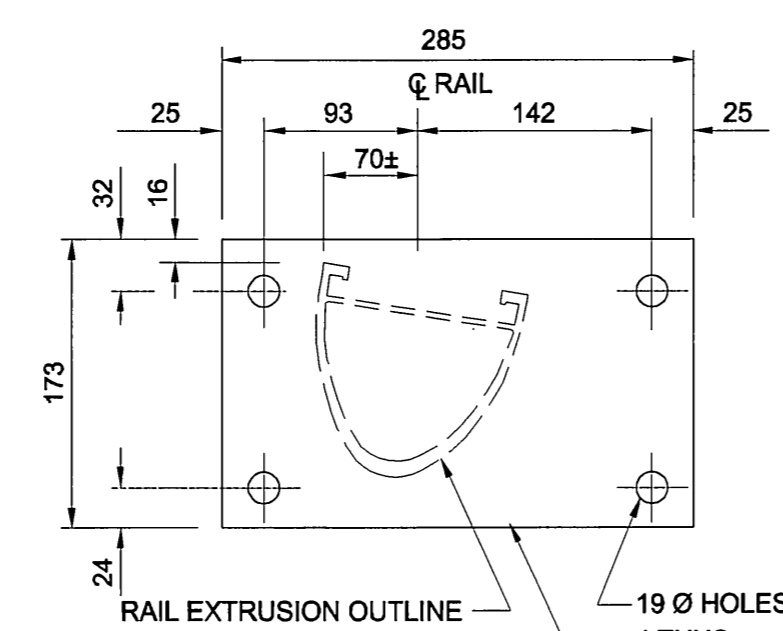
ALSO SHOWING RAIL TO POST ASSEMBLY DETAIL
SCALE 1:5



RAIL PLATE SHIM



RAIL POST SHIM



RAIL PLATE DETAIL

ALUMINUM SHIMS IN 1.5, 3.0 AND 6.0 THICKNESS MIN. SHIM OF 3.0 AT EACH RAIL POST OR RAIL PLATE

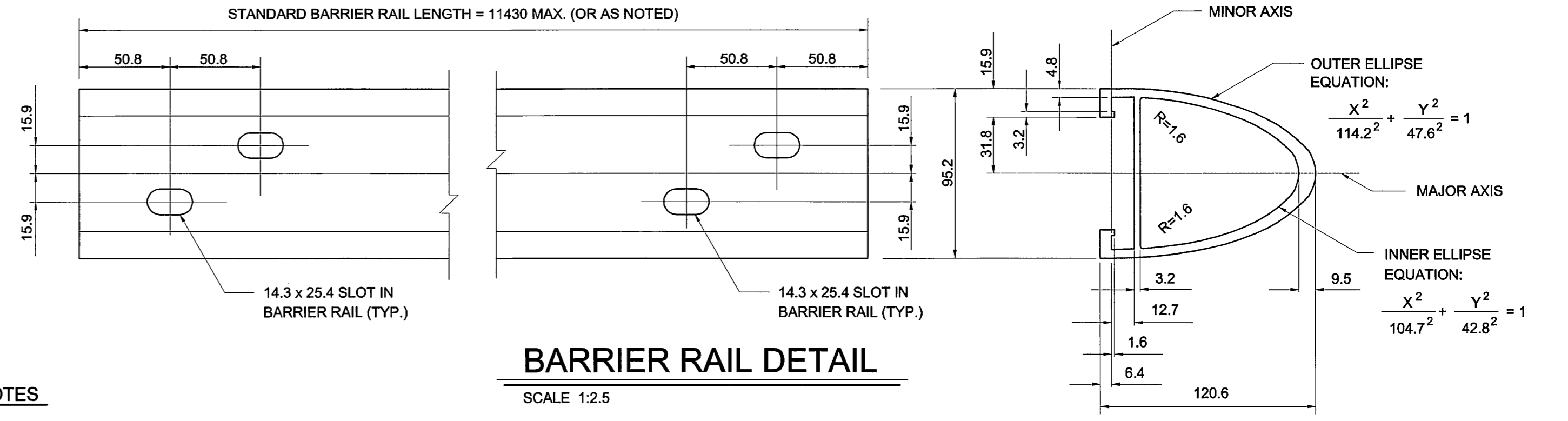
15 THICK ALUMINUM PLATE
19 Ø HOLES 4 THUS

NOTES

1. THE 19mm DIA. HOLES (4) IN THE BASE OF THE BARRIER RAIL POSTS AND RAIL PLATES ARE DESIGNED TO ACCOMMODATE 16mm DIA. RAIL POST ANCHOR BOLTS AS DETAILED. SUPPLY WITH EACH ANCHOR BOLT: ONE STAINLESS STEEL PLAIN WASHER, ONE STAINLESS STEEL LOCK WASHER, ONE STAINLESS HEX NUT, AND ONE 50mm Ø GALVANIZED PLATE WASHER.
2. A COMBINATION OF 1.5, 3.0 AND/OR 6.0mm THICK ALUMINUM RAIL POST OR PLATE SHIMS ARE TO BE USED AS REQUIRED TO SET THE BARRIER RAIL TO THE SPECIFIED HEIGHT. (MINIMUM 3.0mm SHIM REQUIRED AT EACH POST OR PLATE)
3. REMOVE ALL BURRS AND SHARP EDGES IN THE SHOP. AFTER INSTALLATION OF THE BARRIER HAS BEEN COMPLETED, THE TOP EDGES AND CORNERS OF THE BARRIER RAIL POST SHALL BE ROUNDED SMOOTH TO THE SATISFACTION OF THE CONTRACT ADMINISTRATOR.
4. BOTTOM SURFACE OF SHIM (SURFACE IN CONTACT WITH CONCRETE) IS TO BE PAINTED WITH TWO COATS OF ALKALI RESISTANT BITUMINOUS PAINT, EACH COAT BEING 1mm IN THICKNESS.

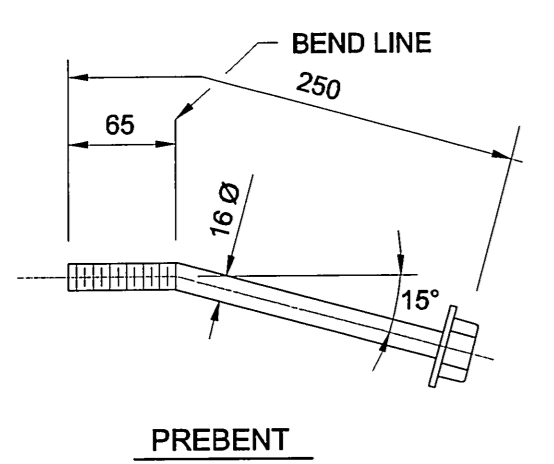
BARRIER RAIL DETAIL

SCALE 1:2.5



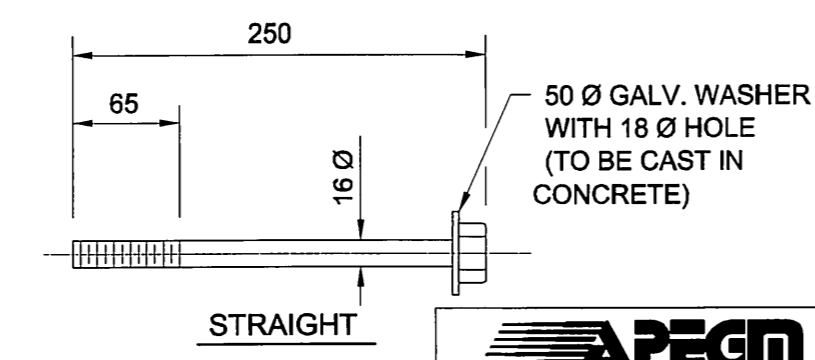
SPECIFICATIONS

1. EXTRUDED ALUMINUM SHAPES AND PLATES SHALL CONFORM TO THE REQUIREMENTS OF A.S.T.M. B221, ALLOY 6061-T6 OR ALLOY 6351-T6 (MINIMUM ELONGATION 10%)
2. THE STAINLESS STEEL HEX HEAD AND THE SOCKET HEAD CAP SCREWS SHALL MEET THE REQUIREMENTS OF ASTM A276, TYPE 316 AND THE DIMENSIONAL REQUIREMENTS OF A.N.S.I. B18.3
3. DIMENSIONAL TOLERANCES NOT SHOWN OR IMPLIED ARE INTENDED TO BE THOSE CONSISTENT WITH THE PROPER FUNCTIONING OF THE PART, INCLUDING ITS APPEARANCE, AND ACCEPTED MANUFACTURING PRACTICES.
4. THE POST SHAFT SHALL BE MADE FROM A SINGLE CHANNEL-SHAPE EXTRUSION WELDED TO A PLATE SHAPE. THE POST BASE AND SHAFT SHALL THEN BE WELDED TOGETHER.
5. WELDING SHALL CONFORM TO THE REQUIREMENTS OF CSA STANDARDS S244-1969, WELDED ALUMINUM DESIGN AND WORKMANSHIP AND W47.2-1967, ALUMINUM WELDING QUALIFICATION CODE. ALUMINUM FILLER ALLOY SHALL BE ER5556
6. THE CONTRACTOR SHALL SUBMIT COMPLETE SHOP DRAWINGS CONSISTING OF THREE PRINTS AND ONE REPRODUCIBLE SEPIA TO THE CONTRACT ADMINISTRATOR FOR APPROVAL PRIOR TO FABRICATION OF ALUMINUM TRAFFIC BARRIER COMPONENTS.
7. ANTI-SEIZE COATING TO BE APPLIED TO ALL THREADED COMPONENTS WHEN BEING ASSEMBLED.



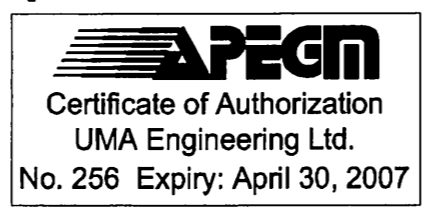
ANCHOR BOLT DETAILS

NTS
(STAINLESS STEEL)
FOR RAIL POSTS



PREBENT

STRAIGHT



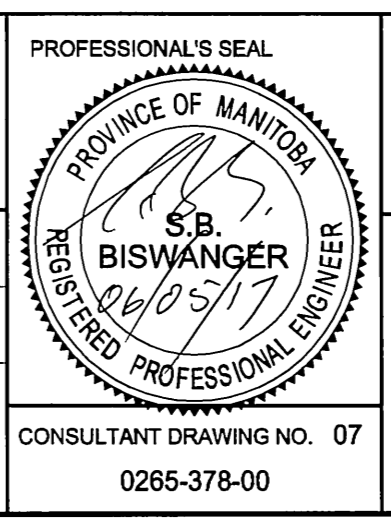
LOCATION APPROVED
UNDERGROUND STRUCTURES

SUPR. U/G STRUCTURES DATE COMMITTEE

NOTE:
LOCATION OF UNDERGROUND STRUCTURES AS SHOWN ARE BASED ON THE BEST INFORMATION AVAILABLE. BUT NO GUARANTEE IS GIVEN THAT ALL EXISTING UTILITIES ARE SHOWN OR THAT THE GIVEN LOCATIONS ARE EXACT. CONFIRMATION OF EXISTENCE AND EXACT LOCATION OF ALL SERVICES MUST BE OBTAINED FROM THE INDIVIDUAL UTILITIES BEFORE PROCEEDING WITH CONSTRUCTION.

NO.	REVISIONS	YYMMDD	BY
B	ISSUED FOR BID	08/05/17	WJd
A	ISSUED FOR REVIEW	06/03/10	KMB

UMA AECOM © 2005 UMA ENGINEERING LTD. ALL RIGHTS RESERVED.	
DESIGNED BY SBB	CHECKED BY
DRAWN BY WJd	APPROVED BY <i>[Signature]</i>
HOR. SCALE 1:250	RELEASED FOR CONSTRUCTION
VERT. SCALE	DATE 06/05/17



THE CITY OF WINNIPEG
PUBLIC WORKS DEPARTMENT

LUXTON COMMUNITY CENTRE
SITE DEVELOPMENT PROJECT
Luxton / St. John's Park / Seven Oaks

Building Communities Initiative Plan
TRAFFIC BARRIER RAIL DETAILS AND SECTIONS

CITY DRAWING NUMBER
SHEET 7 OF 8
REV L7 B

TENDER NO. 225-2006