

NOTE:
STATIONS ARE BASED ON
KENASTON BOULEVARD EAST
MEDIAN CONTROL LINE

P1
(WAREHOUSE)

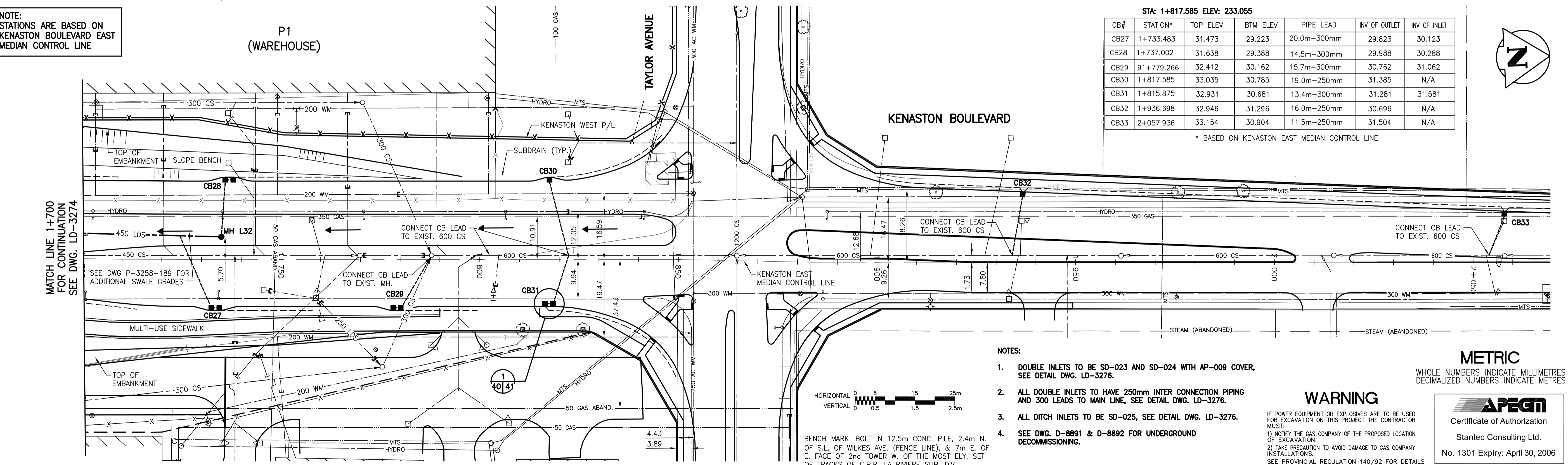
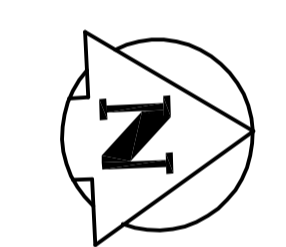
TAYLOR AVENUE

KENASTON BOULEVARD

STA: 1+817.585 ELEV: 233.055

CB#	STATION*	TOP ELEV	BTM ELEV	PIPE LEAD	INV OF OUTLET	INV OF INLET
CB27	1+733.483	31.473	29.223	20.0m-300mm	29.823	30.123
CB28	1+737.002	31.638	29.388	14.5m-300mm	29.988	30.288
CB29	91+779.266	32.412	30.162	15.7m-300mm	30.762	31.062
CB30	1+817.585	33.035	30.785	19.0m-250mm	31.385	N/A
CB31	1+815.875	32.931	30.681	13.4m-300mm	31.281	31.581
CB32	1+936.698	32.946	31.296	16.0m-250mm	30.696	N/A
CB33	2+057.936	33.154	30.904	11.5m-250mm	31.504	N/A

* BASED ON KENASTON EAST MEDIAN CONTROL LINE



- NOTES:
- DOUBLE INLETS TO BE SD-023 AND SD-024 WITH AP-009 COVER, SEE DETAIL DWG. LD-3276.
 - ALL DOUBLE INLETS TO HAVE 250mm INTER CONNECTION PIPING AND 300 LEADS TO MAIN LINE, SEE DETAIL DWG. LD-3276.
 - ALL DITCH INLETS TO BE SD-025, SEE DETAIL DWG. LD-3276.
 - SEE DWG. D-8891 & D-8892 FOR UNDERGROUND DECOMMISSIONING.

WARNING

IF POWER EQUIPMENT OR EXPLOSIVES ARE TO BE USED FOR EXCAVATION ON THIS PROJECT THE CONTRACTOR MUST:
1) NOTIFY THE GAS COMPANY OF THE PROPOSED LOCATION OF EXCAVATION.
2) TAKE PRECAUTION TO AVOID DAMAGE TO GAS COMPANY INSTALLATIONS.
SEE PROVINCIAL REGULATION 140/92 FOR DETAILS

METRIC
WHOLE NUMBERS INDICATE MILLIMETRES
DECIMALIZED NUMBERS INDICATE METRES

APEGM
Certificate of Authorization
Stantec Consulting Ltd.
No. 1301 Expiry: April 30, 2006

EXISTING	LEGEND - PLAN	NEW	EXISTING	LEGEND - PLAN	NEW	EXISTING	LEGEND - PLAN	NEW
---	GAS	---	○	MANHOLE	●	+	HYDRANT	+
---	MTS	---	△	CATCH BASIN/CATCH PIT	■	+	WATERMAIN VALVE	+
---	HYDRO	---	△	C & G INLET WITH BOX	▲	+	GAS LINE MARKER	+
---	VIDEOEN	---	○	TREE	○	+	LIGHT STANDARD	+
---	TRAFFIC SIGNALS	---	○	TEST HOLE	○	+	GUY WIRE	+
---	LAND DRAINAGE SEWER	---	○	PROPERTY LINE	○	+	TRAFFIC SIGNAL	+
---	FORCEMAIN	---	○	SURVEY BAR	○	+	SIGN	+
---	CATCHBASIN LEAD	---	○	GEODETIC MONUMENT	○	+	SIGNAL PIT	+
---	WATERMAIN	---	○	FENCE	○	+	BOLLARD	+
---	SUBDRAIN	---	○	BACK OF CURB	○	+	FENCE	+
---	DITCH	---	○	ELEVATION	○	+		

LOCATION APPROVED UNDERGROUND STRUCTURES

B.M. 66-001
ELEV. 233.425m

DESIGNED BY: JKH
CHECKED BY: DGM
DRAWN BY: TAG
APPROVED BY: AJR

HOR. SCALE: 1:500
VERTICAL: 1:50

ISSUED FOR TENDER: 06.03.03
NO. REVISIONS: DATE BY

Stantec Consulting Ltd.
905 Waverley Street, Winnipeg, Manitoba
Tel 204-489-5900 Fax 204-453-9012

DESIGNED BY: JKH
CHECKED BY: DGM
DRAWN BY: TAG
APPROVED BY: AJR

HOR. SCALE: 1:500
VERTICAL: 1:50

ISSUED FOR TENDER: 06.03.03
NO. REVISIONS: DATE BY

ENGINEER'S SEAL
ORIGINAL SEALED BY
A.J. RAPOSO
P. ENG.
06.03.03

CONSULTANT DRAWING NO.
113703042-U26

THE CITY OF WINNIPEG
PUBLIC WORKS DEPARTMENT
ENGINEERING DIVISION

Winnipeg

KENASTON UNDERPASS PROJECT
KENASTON BOULEVARD RECONSTRUCTION

KENASTON BOULEVARD
LAND DRAINAGE SYSTEM
STA 1+700 TO STA 2+054

SHEET 40 OF 52
CAD FILE DRAWING NUMBER
ku-38-40-665.dwg
CITY DRAWING NUMBER
LD-3275