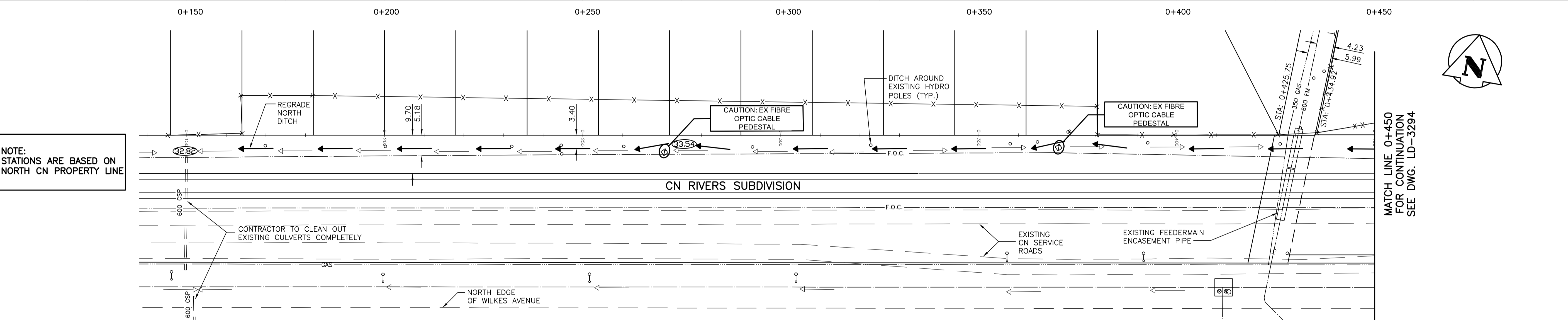
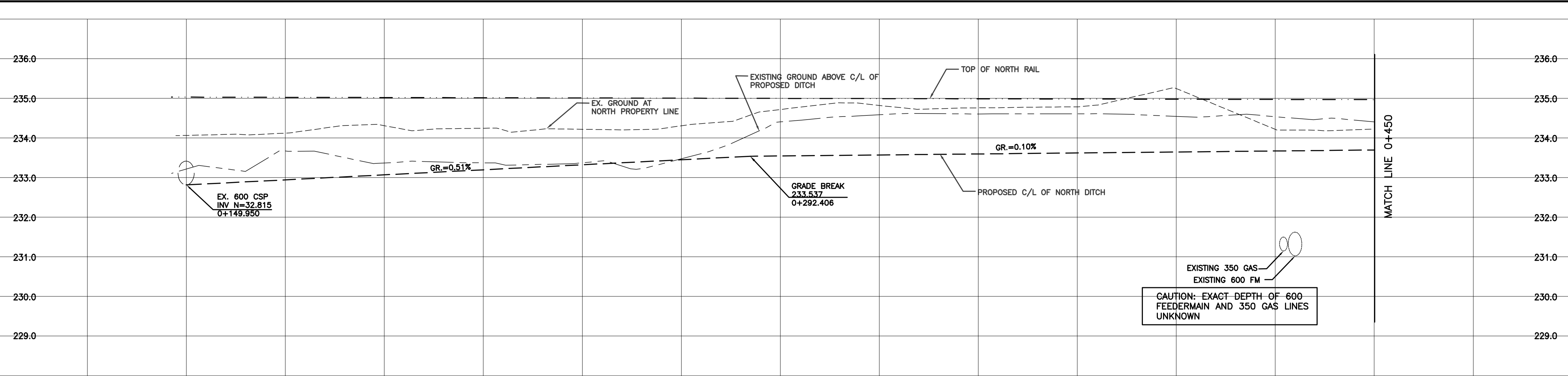
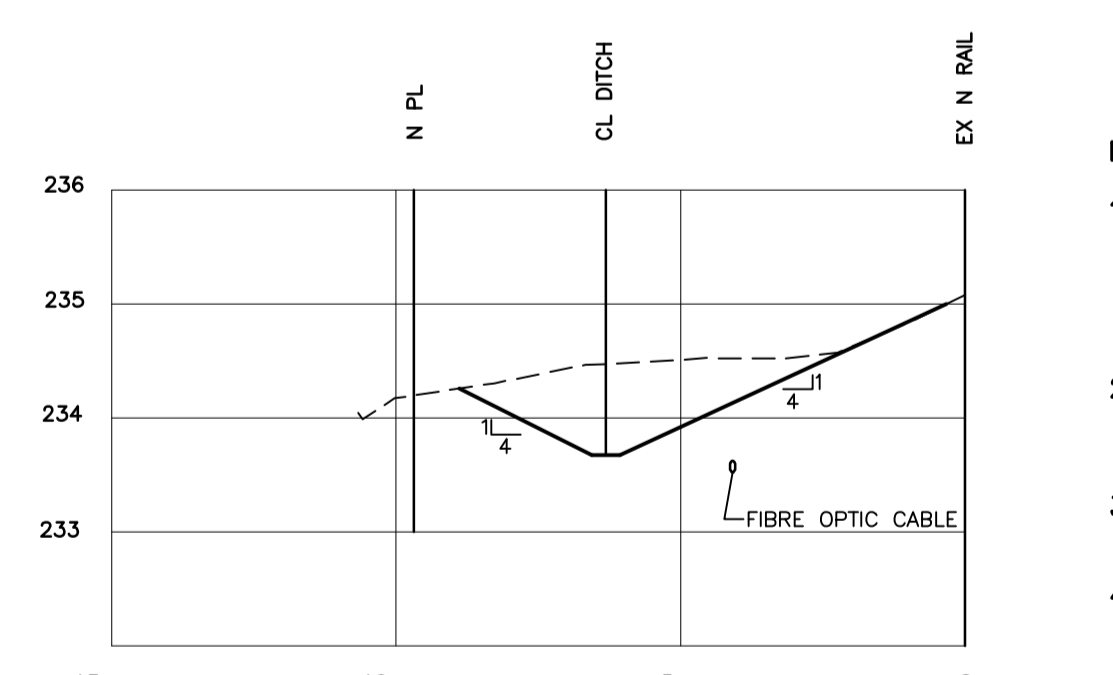
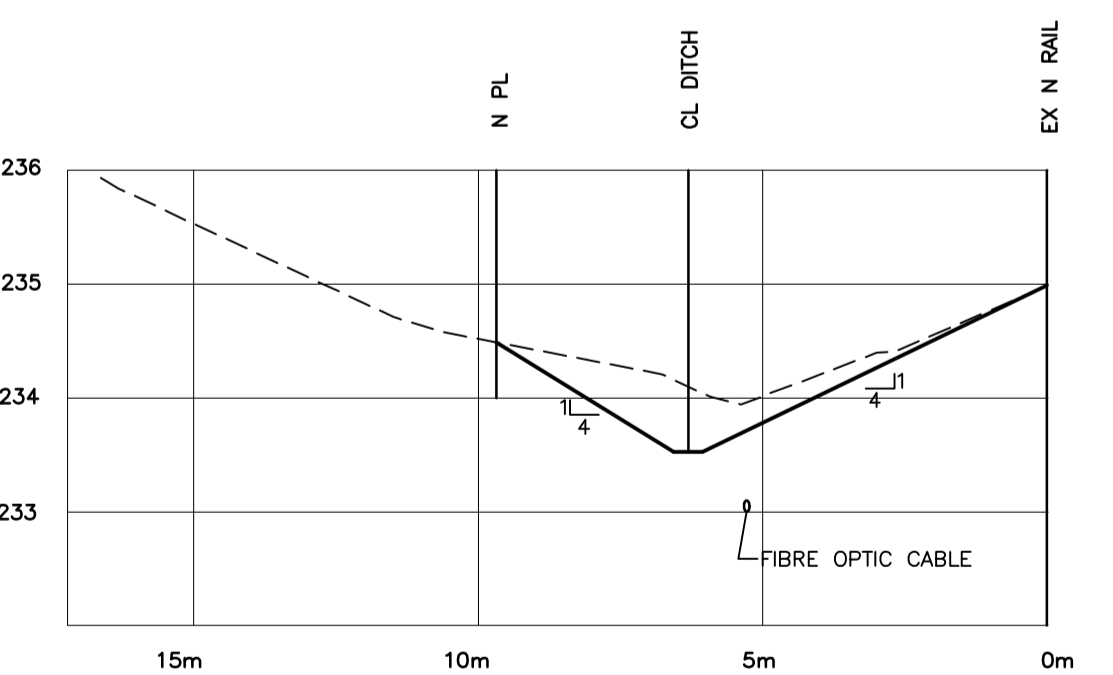
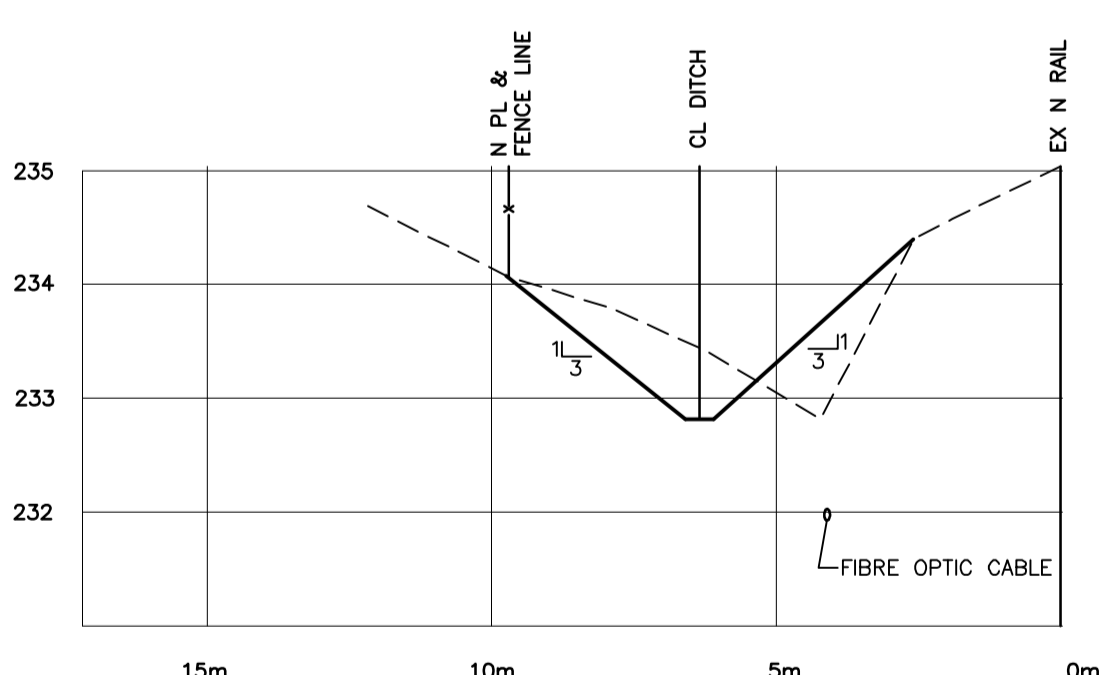


KU-44-665



NOTE:
STATIONS ARE BASED ON
NORTH CN PROPERTY LINE

MATCH LINE 0+450
FOR CONTINUATION
SEE DWG. LD-3294



NOTES:

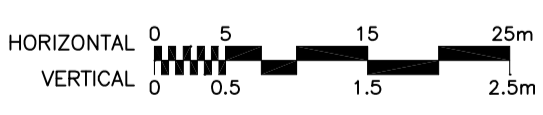
1. CONTRACTOR TO CONFIRM LOCATION AND DEPTH OF EXISTING FIBRE OPTIC CABLE AT LOCATIONS REQUESTED BY THE CONTRACT ADMINISTRATOR PRIOR TO CONSTRUCTION OF PROPOSED DITCH.
2. CONTRACTOR REQUIRED TO DITCH AROUND EX. UTILITIES SO AS NOT TO UNDERMINE THEM.
3. CONTRACTOR TO DISPOSE OF EXCESS DITCH MATERIAL FROM OFFSITE.
4. DITCH BOTTOM TO BE A MINIMUM OF 500 WIDE.

WARNING

IF POWER EQUIPMENT OR EXPLOSIVES ARE TO BE USED FOR EXCAVATION ON THIS PROJECT THE CONTRACTOR MUST:
1) NOTIFY THE GAS COMPANY OF THE PROPOSED LOCATION OF EXCAVATION.
2) TAKE PRECAUTION TO AVOID DAMAGE TO GAS COMPANY INSTALLATIONS.
SEE PROVINCIAL REGULATION 140/92 FOR DETAILS

CN NORTH DITCH SECTION AT STA 0+149.9

METRIC
WHOLE NUMBERS INDICATE MILLIMETRES
DECIMALIZED NUMBERS INDICATE METRES



CN NORTH DITCH SECTION AT STA 0+290.0

BENCH MARK: BOLT IN 12.5m CONC. PILE, 2.4m N. OF S.L. OF WILKES AVE. (FENCE LINE), & 7m E. OF E. FACE OF 2nd TOWER W. OF THE MOST ELY. SET OF TRACKS OF C.P.R. LA RIVIERE SUBD.

CN NORTH DITCH SECTION AT STA 0+430.0

APEGM
Certificate of Authorization
Stantec Consulting Ltd.
No. 1301 Expiry: April 30, 2006

---	GAS	○	MANHOLE	●	HYDRANT	◆
---	MTS	□	CATCH BASIN/CATCH PIT	■	WATERMAIN VALVE	⊙
---	HYDRO	△	C & G INLET WITH BOX	+	GAS LINE MARKER	+
---	VIDEO	⊙	TREE	○	LIGHT STANDARD	○
---	TRAFFIC SIGNALS	⊙	TEST HOLE	○	GUY WIRE	—
---	LAND DRAINAGE SEWER	---	PROPERTY LINE	---	TRAFFIC SIGNAL	---
---	FORCEMAIN	---	SURVEY BAR	---	SIGN	---
---	CATCHBASIN LEAD	---	GEODETIC MONUMENT	---	SIGNAL PIT	---
---	WATERMAIN	---	FENCE	---	BOLLARD	---
---	SUBDRAIN	---	BACK OF CURB	---	FENCE	---
---	DITCH	---	ELEVATION	---		---
---		33,000		63,000		
---	EXISTING	---	LEGEND -- PLAN	---	LEGEND -- PLAN	---
---	NEW	---	LEGEND -- PLAN	---	LEGEND -- PLAN	---

LOCATION APPROVED UNDERGROUND STRUCTURES

SUPV. U/G STRUCTURES COMMITTEE DATE

NOTE:
LOCATION OF UNDERGROUND STRUCTURES AS SHOWN ARE BASED ON THE BEST INFORMATION AVAILABLE BUT NO GUARANTEE IS GIVEN THAT THE GIVEN LOCATIONS ARE EXACT. CONFIRMATION OF EXISTENCE AND EXACT LOCATION OF ALL SERVICES MUST BE OBTAINED FROM THE INDIVIDUAL UTILITIES BEFORE PROCEEDING WITH CONSTRUCTION.

B.M. ELEV.

NO.	REVISIONS	DATE	BY
0	ISSUED FOR TENDER	06.03.03	AJR

Stantec Consulting Ltd.
905 Waverley Street, Winnipeg, Manitoba
Tel 204-489-5900 Fax 204-453-9012

DESIGNED BY: JKH	CHECKED BY: DGM
DRAWN BY: JKH, TAG	APPROVED BY: AJR
HOR. SCALE: 1:500	DATE: 06.03.03
VERTICAL: 1:50	AUTHORIZED BY: R. FINGAS, P. ENG. BRIDGE PROJECTS ENGINEER

ENGINEER'S SEAL

ORIGINAL SEALED BY
A.J. RAPOSO
P. ENG.
06.03.03

CONSULTANT DRAWING NO.
113703042-U30

THE CITY OF WINNIPEG
PUBLIC WORKS DEPARTMENT
ENGINEERING DIVISION

Winnipeg

KENASTON UNDERPASS PROJECT
KENASTON BOULEVARD RECONSTRUCTION

CN RIVERS SUBDIVISION
NORTH CN DITCHING
STA 0+149 TO STA 0+450

SHEET 44 OF 52
CAD FILE DRAWING NUMBER ku-43-45-665.dwg
CITY DRAWING NUMBER LD-3279