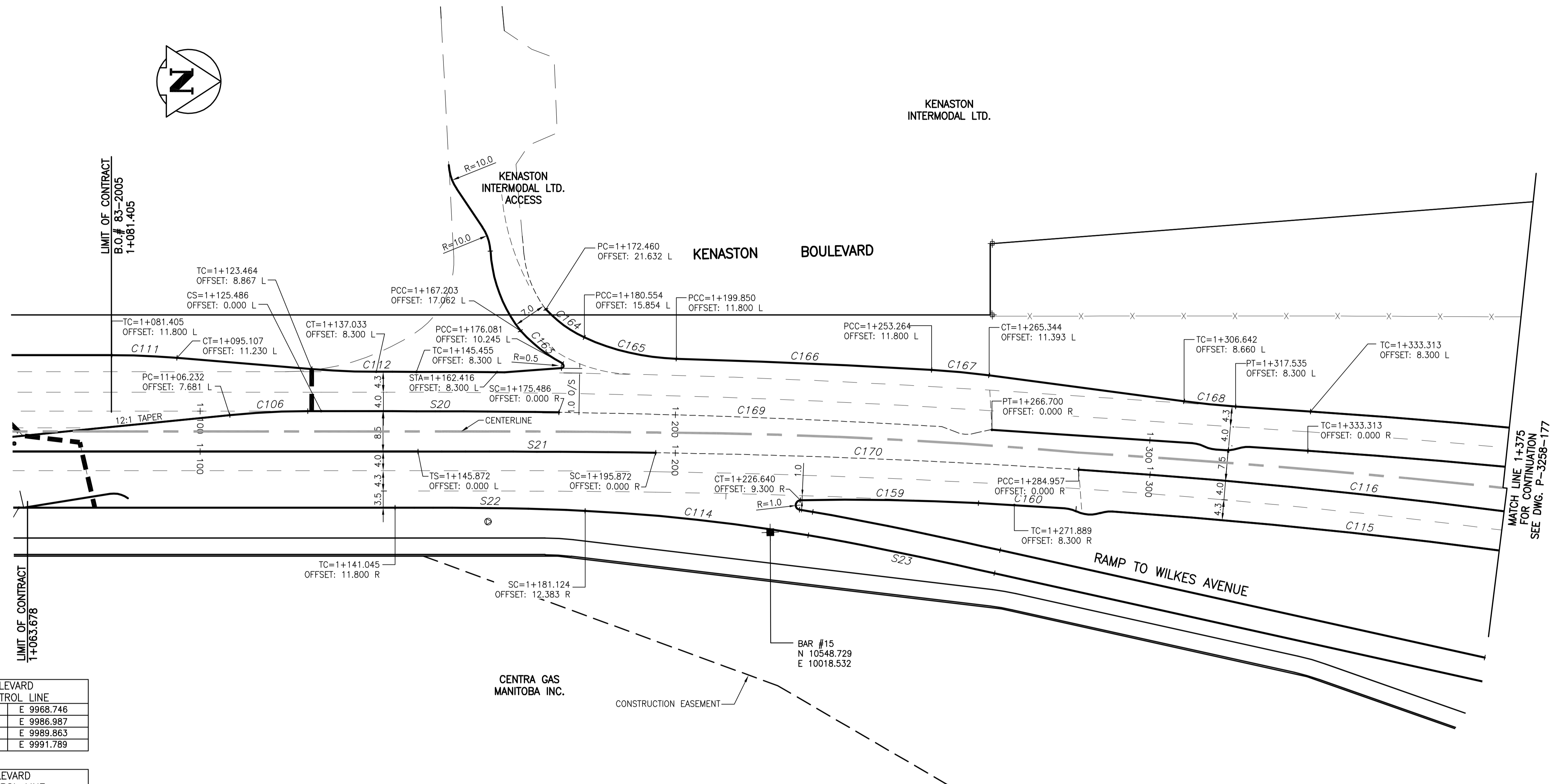


KENASTON INTERMODAL LTD.



LIMIT OF CONTRACT  
B.O.# 83-2005  
1+061.405

LIMIT OF CONTRACT  
1+063.678

MATCH LINE 1+375  
FOR CONTINUATION  
SEE DWG. P.-3258-177

KENASTON BOULEVARD WEST MEDIAN CONTROL LINE			
STA=0+500.000	N	9830.045	E 9968.746
STA=1+040.295	N	10370.032	E 9986.987
TS=1+125.486	N	10455.174	E 9989.863
SC=1+175.486	N	10505.136	E 9991.789

KENASTON BOULEVARD EAST MEDIAN CONTROL LINE			
STA=0+500.00	N	9829.876	E 9973.743
STA=0+617.690	N	9947.500	E 9977.716
STA=0+749.983	N	10079.642	E 9983.931
STA=0+882.274	N	10211.783	E 9990.146
TS=1+145.872	N	10475.232	E 9999.045

SPIRAL TABLE				
SPIRAL	LENGTH	THETA	S TAN	L TAN
S20	50.000	0°49'09"	16.667	33.334
S21	50.000	0°49'18"	16.667	33.334
S22	40.000	2°51'53"	13.337	26.670
S23	40.000	2°51'53"	13.337	26.670
S24	40.249	2°50'49"	13.419	26.836

CURVE TABLE				
CURVE	RADIUS	LENGTH	TANGENT	DELTA
C106	165.000	16.445	8.229	5'42'38"
C111	165.000	13.718	6.863	4'45'49"
C112	165.000	13.591	6.799	4'43'10"
C114	400.000	47.249	23.652	6'46'04"
C115	1391.700	119.289	59.681	4'54'40"
C116	1400.000	120.000	60.037	4'54'40"
C159	500.000	37.519	18.768	4'17'57"
C160	1735.200	20.575	10.288	0'40'46"
C163	32.000	20.129	10.410	36'02'30"
C164	25.000	10.082	5.110	23'06'22"
C165	50.000	20.000	10.136	22'55'06"
C166	1760.300	53.775	26.890	1'45'01"
C167	165.000	12.169	6.087	4'13'32"
C168	165.000	10.901	5.452	3'47'07"
C169	1748.500	80.650	40.332	2'38'34"
C170	1743.500	89.084	44.552	2'55'39"

NOTES:  
 -ALL STATIONS WEST OF CENTERLINE, BASED ON WEST MEDIAN CONTROL LINE.  
 -ALL STATIONS EAST OF CENTERLINE, BASED ON EAST MEDIAN CONTROL LINE.  
 -ONLY SURVEY BARS WITH NUMBER AND COORDINATES SHALL BE USED FOR LAYOUT PURPOSES.  
 -NORTHINGS AND EASTINGS ARE BASED ON A LOCAL COORDINATE SYSTEM

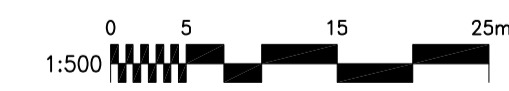
**METRIC**

WHOLE NUMBERS INDICATE MILLIMETRES  
 DECIMALIZED NUMBERS INDICATE METRES

**WARNING**

IF POWER EQUIPMENT OR EXPLOSIVES ARE TO BE USED FOR EXCAVATION ON THIS PROJECT THE CONTRACTOR MUST:  
 1) NOTIFY THE GAS COMPANY OF THE PROPOSED LOCATION OF EXCAVATION.  
 2) TAKE PRECAUTION TO AVOID DAMAGE TO GAS COMPANY INSTALLATIONS.  
 SEE PROVINCIAL REGULATION 140/92 FOR DETAILS

BENCH MARK: BOLT IN 12.5m CONC. PILE, 2.4m N. OF S.L. OF WILKES AVE. (FENCE LINE), & 7m E. OF E. FACE OF 2nd TOWER W. OF THE MOST ELY. SET OF TRACKS OF C.P.R. LA RIVIERE SUB. DIV.



EXISTING	LEGEND - PLAN	NEW	EXISTING	LEGEND - PLAN	NEW	EXISTING	LEGEND - PLAN	NEW	
	GAS		MANHOLE		CONCRETE PAVEMENT		ASPHALT PAVEMENT		CONC. SIDEWALK/MED. SLAB
	HYDRO		C & G INLET WITH BOX		PAVING STONE		TOPSOIL & SOD		GRAVEL
	VIDEO		TREE		SURVEY BAR		RAMP CURB		REMOVAL
	TRAFFIC SIGNALS		TEST HOLE		PROPERTY LINE		GEODETIC MONUMENT		FENCE
	LAND DRAINAGE SEWER		BACK OF CURB		ELEVATION				
	SANITARY/COMBINED SEWER								
	CATCHBASIN LEAD								
	WATERMAIN								
	SUBDRAIN								
	DITCH								

LOCATION APPROVED UNDERGROUND STRUCTURES  
 SUPV. U/G STRUCTURES COMMITTEE DATE  
 NOTE:  
 LOCATION OF UNDERGROUND STRUCTURES AS SHOWN ARE BASED ON THE BEST INFORMATION AVAILABLE BUT NO GUARANTEE IS GIVEN THAT ALL EXISTING UTILITIES ARE SHOWN OR THAT THE GIVEN LOCATIONS ARE EXACT. CONFIRMATION OF EXISTENCE AND EXACT LOCATION OF ALL SERVICES MUST BE OBTAINED FROM THE INDIVIDUAL UTILITIES BEFORE PROCEEDING WITH CONSTRUCTION.

B.M.	ELEV.	NO.	REVISIONS	DATE	BY
66-001	233.425m				
		0	ISSUED FOR TENDER	06.03.03	GWM

**Stantec Consulting Ltd.**  
 905 Waverley Street, Winnipeg, Manitoba  
 Tel 204-489-5900 Fax 204-453-9012

DESIGNED BY: VMM  
 CHECKED BY: WKB  
 DRAWN BY: TAG  
 APPROVED BY: GWM

HOR. SCALE: 1:500  
 VERTICAL: N/A

AUTHORIZED BY: R. FINGAS  
 DATE: 06.03.03  
 R. FINGAS, P. ENG.  
 BRIDGE PROJECTS ENGINEER

ENGINEER'S SEAL  
 ORIGINAL SEALED BY  
 G.W. MOURANT  
 P. ENG.  
 06.03.03  
 CONSULTANT DRAWING NO.  
 I13703042-HI2

**THE CITY OF WINNIPEG**  
 PUBLIC WORKS DEPARTMENT  
 ENGINEERING DIVISION

**Winnipeg**

**KENASTON UNDERPASS PROJECT**  
 KENASTON BOULEVARD RECONSTRUCTION

SHEET 5 OF 52  
 CAD FILE DRAWING NUMBER  
 ku-05-08-665.dwg  
 CITY DRAWING NUMBER  
 P-3258-176

KENASTON BOULEVARD  
 HORIZONTAL GEOMETRY  
 STA 1+063 TO STA 1+375

**APEGM**  
 Certificate of Authorization  
 Stantec Consulting Ltd.  
 No. 1301 Expiry: April 30, 2006

V:\113703042 - Kenaston UP DESIGN\A200\CONTRACT 6 - Underpass.dwg (R:\BDS\K\11-05-08-665.dwg  
 2006-03-08 11:55AM By: jferreira