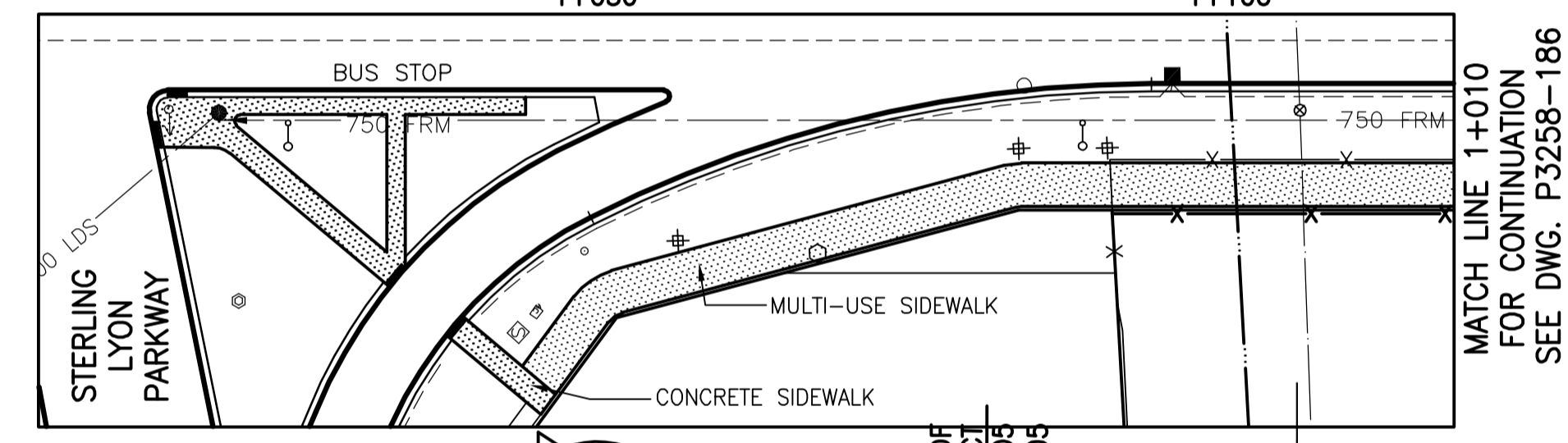
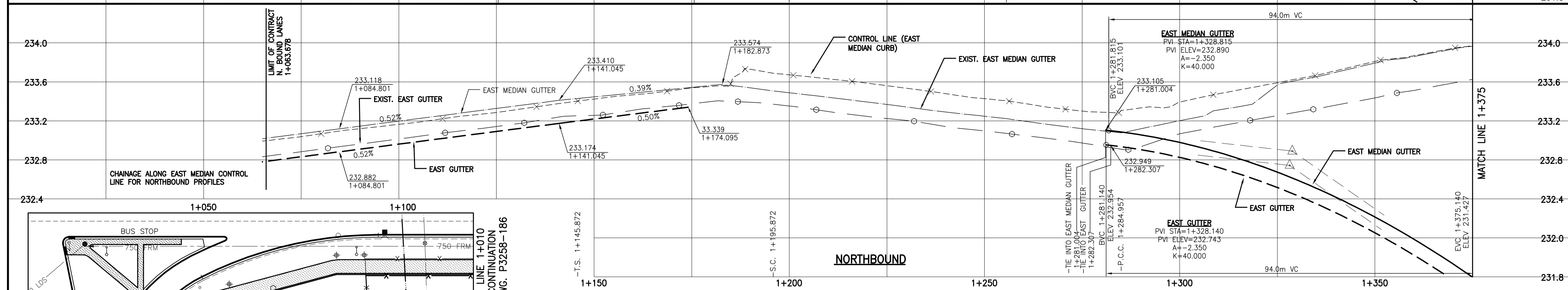
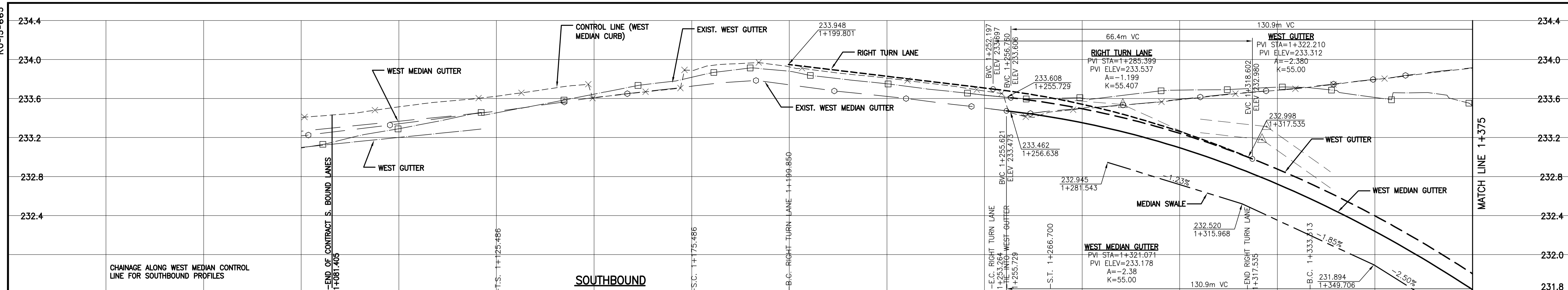


KU-15-665

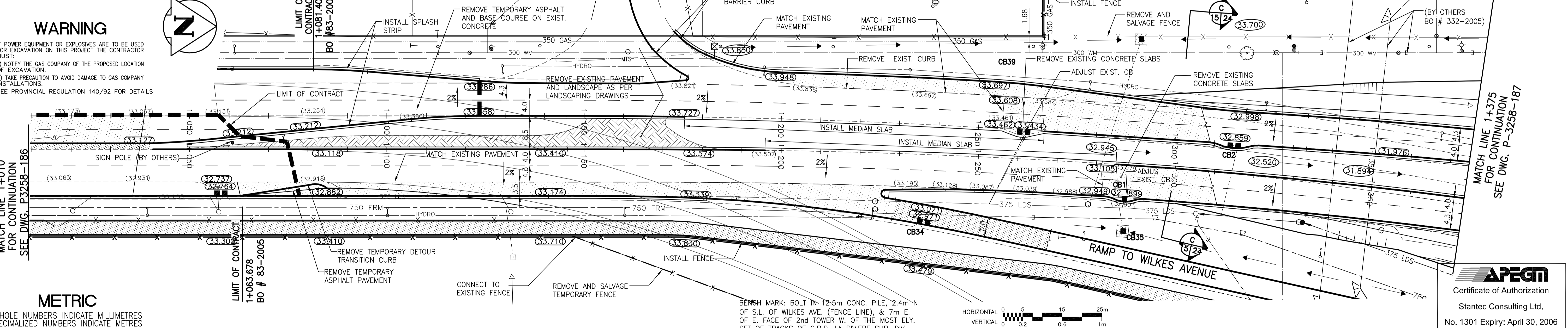


WARNING

IF POWER EQUIPMENT OR EXPLOSIVES ARE TO BE USED FOR EXCAVATION ON THIS PROJECT THE CONTRACTOR MUST:

- 1) NOTIFY THE GAS COMPANY OF THE PROPOSED LOCATION OF EXCAVATION.
- 2) TAKE PRECAUTION TO AVOID DAMAGE TO GAS COMPANY INSTALLATIONS.

SEE PROVINCIAL REGULATION 140/92 FOR DETAILS



METRIC

WHOLE NUMBERS INDICATE MILLIMETRES
DECIMALIZED NUMBERS INDICATE METRES

	GAS		MANHOLE		CONCRETE PAVEMENT
	MTS		CATCH BASIN/CATCH PIT		ASPHALT PAVEMENT
	HYDRO		C & G INLET WITH BOX		CONC. SIDEWALK/MED. SLAB
	VIDEO		TREE		PAVING STONE
	TRAFFIC SIGNALS		TEST HOLE		TOPSOIL & SOD
	LAND DRAINAGE SEWER		PROPERTY LINE		GRAVEL
	SANITARY/COMBINED SEWER		SURVEY BAR		RAMP CURB
	CATCHBASIN LEAD		GEODETIC MONUMENT		REMOVAL
	WATERMAIN		FENCE		SWALE ELEVATION
	SUBDRAIN		BACK OF CURB		33.000
	DITCH		ELEVATION		33.195
	EXISTING		LEGEND - PLAN		EXISTING
	LEGEND - PLAN		NEW		LEGEND - PLAN
	LEGEND - PLAN		EXISTING		LEGEND - PLAN
	LEGEND - PLAN		NEW		LEGEND - PLAN

LOCATION APPROVED UNDERGROUND STRUCTURES

SUPV. U/G STRUCTURES COMMITTEE DATE

NOTE:
LOCATION OF UNDERGROUND STRUCTURES AS SHOWN ARE BASED ON THE BEST INFORMATION AVAILABLE BUT NO GUARANTEE IS GIVEN THAT ALL EXISTING UTILITIES ARE SHOWN OR THAT THE GIVEN LOCATIONS ARE EXACT. CONFIRMATION OF EXISTENCE AND EXACT LOCATION OF ALL SERVICES MUST BE OBTAINED FROM THE INDIVIDUAL UTILITIES BEFORE PROCEEDING WITH CONSTRUCTION.

B.M. 66-001
ELEV. 233.425m

Stantec Consulting Ltd.

905 Waverley Street, Winnipeg, Manitoba
Tel 204-489-5900 Fax 204-453-9012

DESIGNED BY: VMM, TAG
CHECKED BY: KAR

DRAWN BY: TAG, VMM
APPROVED BY: GWM

HOR. SCALE: 1:500
VERTICAL: 1:20

AUTHORIZED BY: R. FINGAS
DATE: 06.03.03

ISSUED FOR TENDER: 06.03.03 GWM

NO. REVISIONS: DATE BY

ENGINEER'S SEAL

ORIGINAL SEALED BY: G.W. MOURANT
P. ENG. 06.03.03

CONSULTANT DRAWING NO. I13703042-T26

THE CITY OF WINNIPEG
PUBLIC WORKS DEPARTMENT
ENGINEERING DIVISION

Winnipeg

KENASTON UNDERPASS PROJECT
KENASTON BOULEVARD RECONSTRUCTION

SHEET 15 OF 52

CAD FILE DRAWING NUMBER: ku-15-19-665.dwg

CITY DRAWING NUMBER: P-3258-186

KENASTON BOULEVARD
HORIZONTAL & VERTICAL ALIGNMENT
STA 1+063 TO STA 1+375

Kenaston Boulevard Reconstruction Project

MATCH LINE 1+375

MATCH LINE 1+375

MATCH LINE 1+010 FOR CONTINUATION SEE DWG. P-3258-186

MATCH LINE 1+010 FOR CONTINUATION SEE DWG. P-3258-186

MATCH LINE 1+375 FOR CONTINUATION SEE DWG. P-3258-187

NOTE: ALL UTILITY POLES WITHIN PROPOSED ROADWAY TO BE RELOCATED (BY OTHERS)

APENM Certificate of Authorization Stantec Consulting Ltd. No. 1301 Expiry: April 30, 2006

Y:\13703042 - Kenaston U/P DESIGN\CAD\CONTRACT 6 - Underpass etc\ROADS\KU-15-19-665.dwg
2006-03-03 03:30PM By: jbenmets