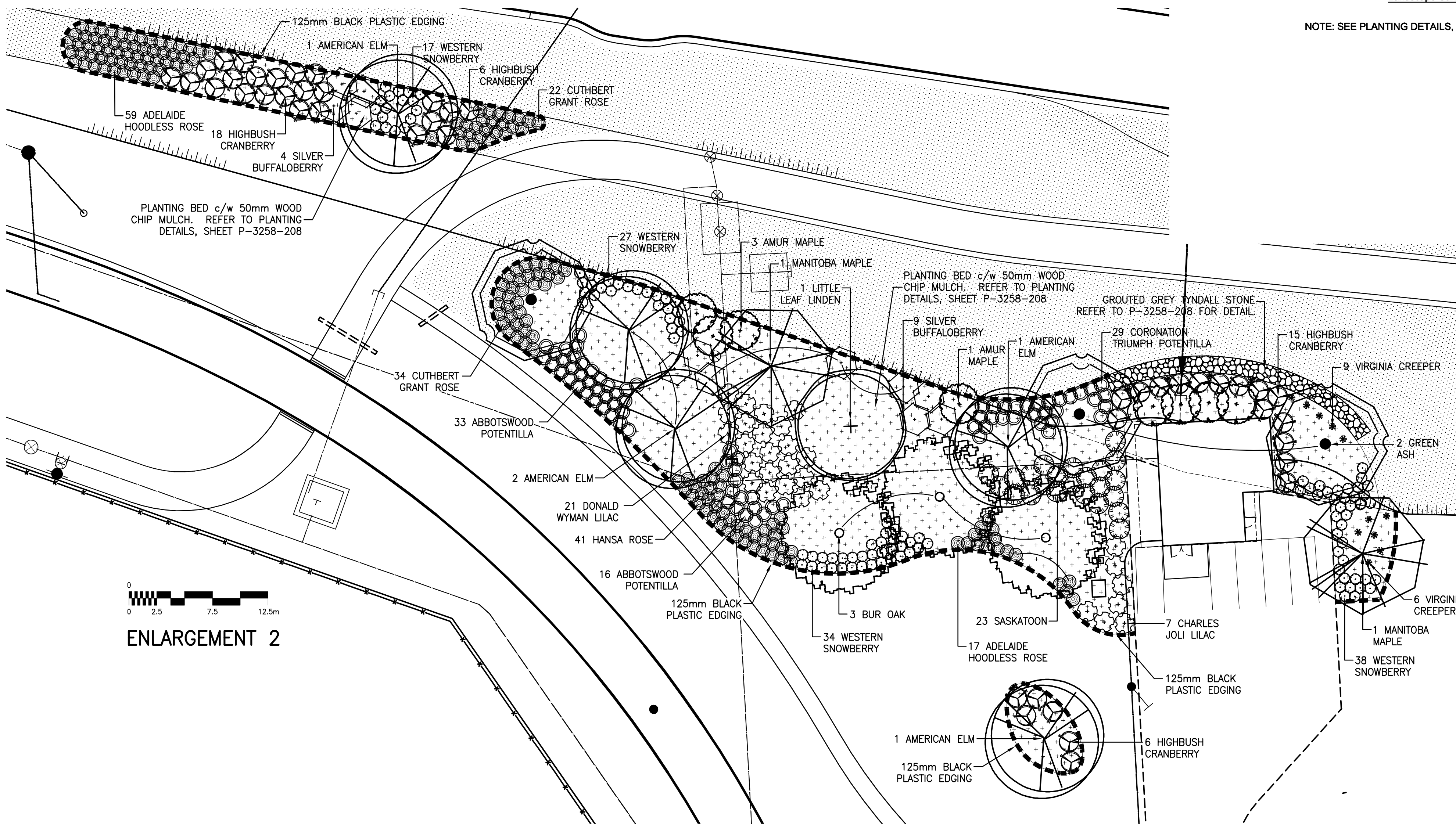
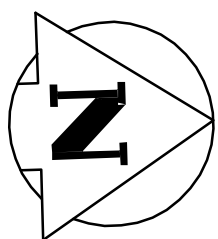


ENLARGEMENT 1



ENLARGEMENT 2

PLANT LIST (SHEET 210)

No.	COMMON NAME	BOTANICAL NAME	SIZE/HEIGHT	NOTES
DECIDUOUS TREES				
4	Manitoba Maple	<i>Acer negundo</i>	50mm cal.	B&B/Container
5	Green Ash	<i>Fraxinus pennsylvanica subintegerrima</i>	65mm cal.	B&B/Container
8	Bur Oak	<i>Quercus macrocarpa</i>	40mm cal.	B&B/Container
1	Little Leaf Linden	<i>Tilia cordata</i>	50mm cal.	B&B/Container
6	American Elm	<i>Ulmus americana</i>	65mm cal.	B&B/Container
DECIDUOUS SHRUBS, LARGE OR TREE-LIKE SHRUBS				
15	Amur Maple	<i>Acer ginnala</i>	0.75m ht.	B&B/Container
45	Saskatoon	<i>Amelanchier alnifolia</i>	0.75m ht.	B&B/Container
31	Silver Buffaloberry	<i>Shepherdia argentea</i>	0.75m ht.	B&B/Container
30	Donald Wyman Lilac	<i>Syringa prestoniae 'Donald Wyman'</i>	0.75m ht.	B&B/Container
26	Charles Joli Lilac	<i>Syringa vulgaris 'Charles Joli'</i>	0.75m ht.	B&B/Container
96	Highbush Cranberry	<i>Viburnum trilobum</i>	0.60m ht.	B&B/Container
DECIDUOUS SHRUBS, SMALL AND MEDIUM				
142	Abbotswood Potentilla	<i>Potentilla fruticosa 'Abbotswood'</i>	0.45m ht.	B&B/Container
29	Coronation Triumph Potentilla	<i>Potentilla fruticosa 'Coronation Triumph'</i>	0.45m ht.	B&B/Container
60	Jackman's Variety Potentilla	<i>Potentilla fruticosa 'Jackman's Variety'</i>	0.45m ht.	B&B/Container
92	Adelaide Hoodless Rose	<i>Rosa arkansana 'Adelaide Hoodless'</i>	0.60m ht.	B&B/Container
56	Cuthbert Grant Rose	<i>Rosa arkansana 'Cuthbert Grant'</i>	0.60m ht.	B&B/Container
41	Hansa Rose	<i>Rosa rugosa 'Hansa'</i>	0.60m ht.	B&B/Container
126	Western Snowberry	<i>Symphoricarpos albus</i>	0.60m ht.	B&B/Container
CLIMBERS				
15	Virginia Creeper	<i>Parthenocissus quinquefolia</i>	2 yr. healthy, vigorous growth	Container

SPECIFICATION: All plant material to be supplied and installed in accordance with the latest edition of Landscape Canada's Metric Guide Specifications for Nursery Stock.

NOTE: SEE PLANTING DETAILS, SHEET P-3258-208

LEGEND

- BLACK PLASTIC EDGING
- GROUDED GREY TYNDALL STONE PIECES
- DITCH SEED MIX
- SHRUB BED

METRIC

WHOLE NUMBERS INDICATE MILLIMETRES
DECIMALIZED NUMBERS INDICATE METRES

WARNING

IF POWER EQUIPMENT OR EXPLOSIVES ARE TO BE USED FOR EXCAVATION ON THIS PROJECT THE CONTRACTOR MUST:

- 1) NOTIFY THE GAS COMPANY OF THE PROPOSED LOCATION OF EXCAVATION.
- 2) TAKE PRECAUTION TO AVOID DAMAGE TO GAS COMPANY INSTALLATIONS.

SEE PROVINCIAL REGULATION 140/92 FOR DETAILS

P:\4251\UM-01\Map\00\01 Working Drawings\4251-040-01_01-CT1006_RX.dwg
2004 December 07, 11:48 a.m.

—	GAS	○	MANHOLE	●	CONCRETE PAVEMENT
—	MTS	□	CATCH BASIN/CATCH PIT	■	ASPHALT PAVEMENT
—	HYDRO	△	C & G INLET WITH BOX	▲	CONC.SIDEWALK/MED.SLAB
—	VIDEON	⊙	TREE	⊙	PAVING STONE
—	TRAFFIC SIGNALS	⊙	TEST HOLE	⊙	TOPSOIL & SOD
—	LAND DRAINAGE SEWER	—	PROPERTY LINE	—	GRAVEL
—	SANITARY/COMBINED SEWER	—	SURVEY BAR	—	RAMP CURB
—	CATCHBASIN LEAD	⊙	GEODETIC MONUMENT	—	REMOVAL
—	WATERMAIN	—	FENCE	—	
—	SUBDRAIN	—	B.O.CURB/E.O.PAVEMENT	—	
—	DITCH	←	ELEVATION	—	
—	LEGEND - PLAN		LEGEND - PLAN		LEGEND - PLAN

LOCATION APPROVED UNDERGROUND STRUCTURES

SUPV. U/G STRUCTURES COMMITTEE DATE

NOTE:
LOCATION OF UNDERGROUND STRUCTURES AS SHOWN ARE BASED ON THE BEST INFORMATION AVAILABLE BUT NO GUARANTEE IS GIVEN THAT ALL EXISTING UTILITIES ARE SHOWN OR THAT THE GIVEN LOCATIONS ARE EXACT. CONFIRMATION OF EXISTENCE AND EXACT LOCATION OF ALL SERVICES MUST BE OBTAINED FROM THE INDIVIDUAL UTILITIES BEFORE PROCEEDING WITH CONSTRUCTION.

NO.	REVISIONS	DATE	BY
1	ISSUED FOR TENDER	06/03/03	LJV
0	ISSUED FOR REVIEW	06/01/23	LJV

UMA AECOM

© 2006 UMA ENGINEERING LTD. ALL RIGHTS RESERVED.

DESIGNED BY	LJV	CHECKED BY	DKH
DRAWN BY	LJV	APPROVED BY	
HOR. SCALE:	1:250	AUTHORIZED BY:	DATE
VERTICAL:		Randy Fingas	06/03/03
		R. FINGAS P.ENG.	
		BRIDGE PROJECTS ENGINEER	

ENGINEER'S SEAL

Original Signed By:
Don Hester
Mar 03/06

CONSULTANT DRAWING NO.
I13703042-L03

THE CITY OF WINNIPEG
PUBLIC WORKS DEPARTMENT
ENGINEERING DIVISION

Winnipeg

KENASTON UNDERPASS PROJECT
KENASTON BOULEVARD RECONSTRUCTION

PLANTING BED ENLARGEMENTS
STA I+400 TO STA I+550

SHEET 49 OF 52
CAD FILE DRAWING NUMBER 04-L-4003_RX
CITY DRAWING NUMBER P-3258-210

