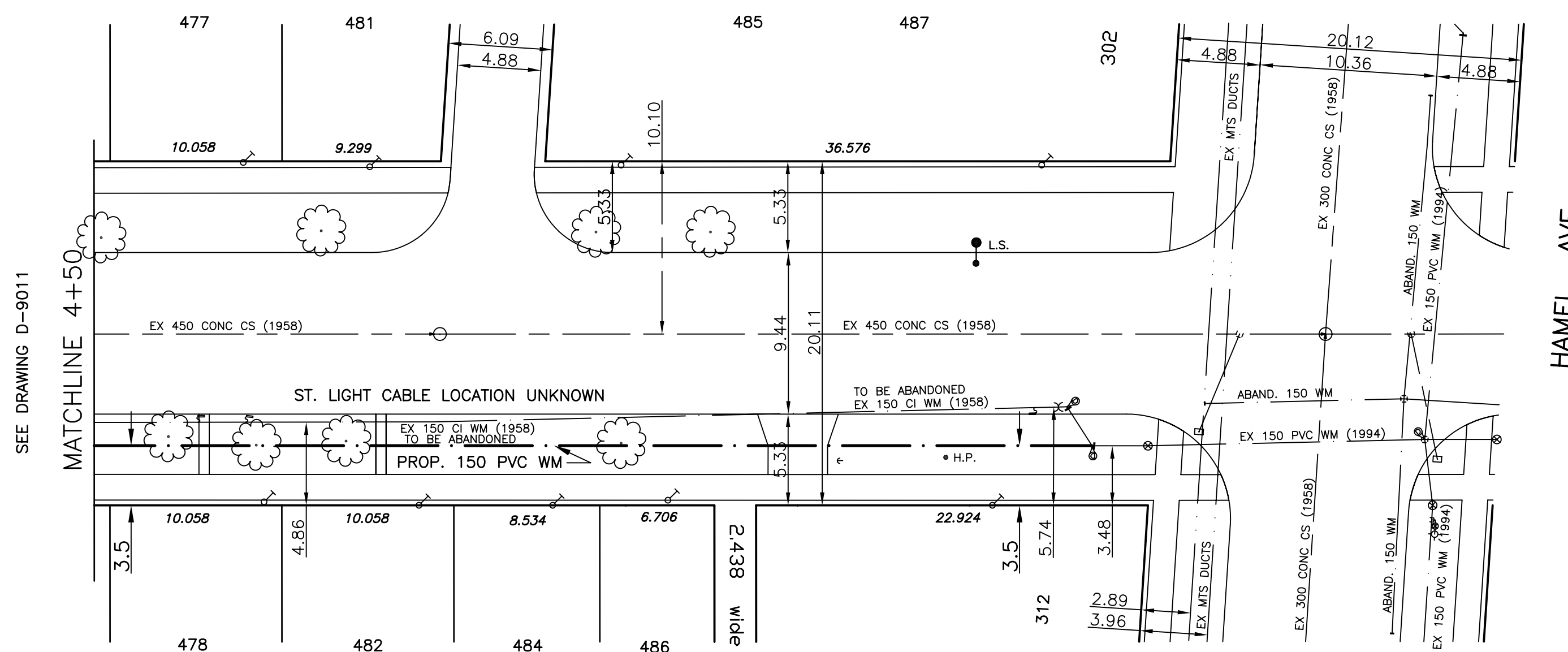


CHAINAGE ALONG WEST PROPERTY LINE OF ST. JEAN BAPTISTE ST.

RUE ST. JEAN BAPTISTE



WATER SERVICE INFORMATION ADDRESS & NATURE OF SERVICE	SIZE(mm) & TYPE (STREET)	SIZE(mm) & TYPE (PROP)	SHORT & LONG MEASUREMENT	CORP LOCATION	REMARKS
478 St. Jean Baptiste St. Residential	19 Copper	LHL	81.7 N/2ND HYD N/BERTRAND		
481 St. Jean Baptiste St. Residential	19 Copper	3.6 RL CR OF HSE	276.8 NOF DOLLARD		
482 St. Jean Baptiste St. Residential	19 Copper	0.9 LR CR OF HSE	90.8 N/2ND HYD N/BERTRAND		
483 St. Jean Baptiste St. Residential	19 Copper	3.9 R OF L COR OF HSE			
484 St. Jean Baptiste St. Residential	19 Copper	1.5 RL CR OF HSE	70.7 N/2ND HYD N/BERTRAND		
485 St. Jean Baptiste St. Residential	19 Copper	4.4 L/R	5.2 FROM CURB		
486 St. Jean Baptiste St. Residential	19 Copper	3.7 LR CR OF HSE	77.4 N/2ND HYD N/BERTRAND		
487 St. Jean Baptiste St. Residential	19 Copper				

- NOTES:**
1. ALL GATE VALVES ARE TO BE COUNTER-CLOCKWISE TO OPEN WITH A BLACK OPERATING NUT.
 2. WATERMAIN TO BE INSTALLED BY TRENCHLESS METHODS.
 3. BACKFILL IS CLASS 5 WITHIN BOULEVARD AND CLASS 3 WHEN WITHIN PAVEMENT/SIDEWALK OR WHEN WITHIN 1.0m OF PAVEMENT OR SIDEWALK.
 4. WATER SERVICES ARE 19mm COPPER UNLESS OTHERWISE NOTED.
 5. MINIMUM COVER TO TOP OF WATERMAIN SHALL BE 2.4m.
 6. LOCATION OF ALL SERVICES TO BE CONFIRMED IN FIELD.
 7. EXPOSE EXISTING WATERMAIN TO CONFIRM DEPTH PRIOR TO CONSTRUCTION.
 8. ALL LEAD SERVICES TO BE RENEWED.
 9. SERVICES TO BE RENEWED SHALL BE REPLACED FROM WATERMAIN TO PROPERTY LINE. ALL OTHERS TO BE RECONNECTED.

APEGM
 Certificate of Authorization
 SEG Engineering Inc.
 No. 252 Expiry: April 30, 2007

METRIC
 WHOLE NUMBERS INDICATE MILLIMETRES
 DECIMALIZED NUMBERS INDICATE METRES

BENCHMARK:
 BM 034-011
 231.413

EXISTING	LEGEND - PLAN	PROPOSED	EXISTING	LEGEND - PLAN	PROPOSED	EXISTING	LEGEND - PROFILE	PROPOSED
	WATERMAIN			HYDRO			WATERMAIN	
	VALVE			M.T.S.			VALVE	
	LAND DRAINAGE SEWER			CONCRETE			LAND DRAINAGE SEWER	
	WASTE WATER SEWER			ASPHALT			WASTE WATER SEWER	
	MANHOLE			PROPERTY LINE			JUNCTIONS	
	CATCH BASIN			SURVEY BAR			CULVERT	
	CURB INLET			CURB STOP				
	TRAFFIC SIGNAL			C.B. LEAD				
	GAS			SIDEWALK				

LOCATION APPROVED			
SUPV.	U/G	STRUCTURES	DATE

NOTE:
 LOCATION OF UNDERGROUND STRUCTURES AS SHOWN ARE BASED ON THE BEST INFORMATION AVAILABLE BUT NO GUARANTEE IS GIVEN THAT ALL EXISTING UTILITIES ARE SHOWN OR THAT THE GIVEN LOCATIONS ARE EXACT. CONFIRMATION OF EXISTENCE AND EXACT LOCATION OF ALL SERVICES MUST BE OBTAINED FROM THE INDIVIDUAL UTILITIES BEFORE PROCEEDING WITH CONSTRUCTION.

SEG ENGINEERING INC.
 200 TACHE AVENUE
 WINNIPEG, MANITOBA
 (204)-233-2113

DESIGNED BY: DJ
 CHECKED BY: SM
 DRAWN BY: RH
 APPROVED BY: IMck

HOR. SCALE: 1:250
 VERT. SCALE: 1:50

RELEASED FOR ORIGINAL CONSTRUCTION SIGNED BY: K. ZUREK P. ENG
 DATE: May 12, 2006

ENGINEERS SEAL

 I. G. MCKINNON
 CONSULTANT DRAWING NO. 069-020-16

THE CITY OF WINNIPEG
 Winnipeg

**2006 CAPITAL WORKS
 WATERMAIN RENEWALS - CONTRACT 21
 RUE ST. JEAN BAPTISTE**

190 M NORTH OF RUE YELLE
 TO HAMEL AVENUE

CITY DRAWING NO. SHEET 4 OF 4
 D-9012