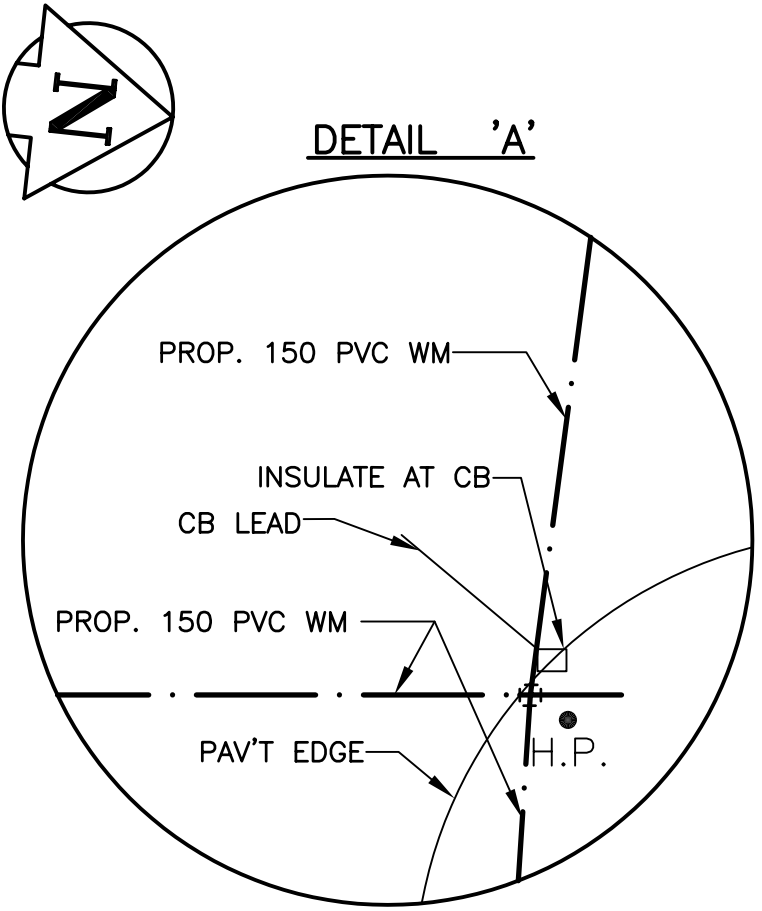
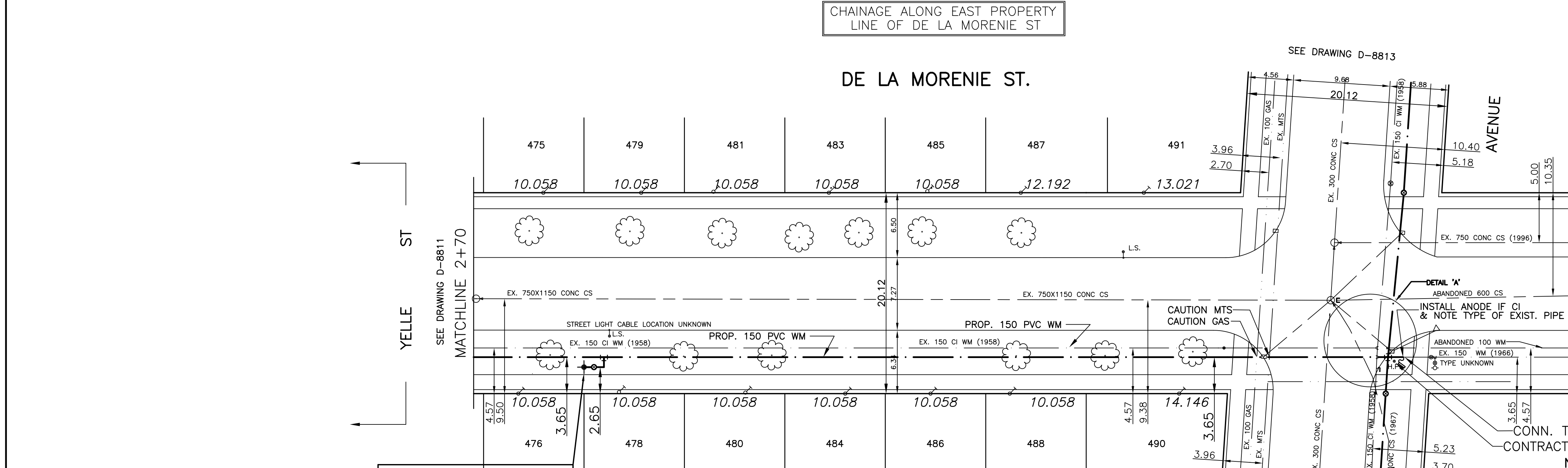


CHAINAGE ALONG EAST PROPERTY LINE OF DE LA MORENIE ST



WATER SERVICE INFORMATION

ADDRESS	SIZE(mm) & TYPE (street)	SIZE(mm) & TYPE (prop)	SHORT & LONG MEASUREMENT	CORP LOCATION	REMARKS	ADDRESS	SIZE(mm) & TYPE (street)	SIZE(mm) & TYPE (prop)	SHORT & LONG MEASUREMENT	CORP LOCATION
475 Rue De La morenie Residential	19 COPPER	25 COPPER	3.1 LR CR OF HSE		DOUBLE SERVICE WITH 475 DON'T TURN OFF	483 Rue De La morenie Residential	19 COPPER	19 COPPER	4.1 LR CR OF HSE	
476 Rue De La morenie Residential	19 COPPER	19 COPPER	98.5 N/1ST HYD N/YELLE			484 Rue De La morenie Residential	19 COPPER	19 COPPER	2.4 LR CR OF HSE	
478 Rue De La morenie Residential	19 COPPER	19 COPPER	2.4 LR CR OF HSE			485 Rue De La morenie Residential	19 COPPER	19 COPPER	132.7 N/1ST HYD N/YELLE	
479 Rue De La morenie Residential	19 COPPER	19 COPPER	111.6 N/1ST HYD N/YELLE			486 Rue De La morenie Residential	19 COPPER	19 COPPER	1.5 RL CR OF HSE	
480 Rue De La morenie Residential	19 COPPER	19 COPPER	2.8 LR CR OF HSE			490 Rue De La morenie Residential	19 COPPER	19 COPPER	1.8 RL CR OF HSE 6.7 FROM L/L S/OF HAMEL	
481 Rue De La morenie Residential	19 COPPER	19 COPPER	3.8 LR CR OF HSE			491 Rue De La morenie Residential	19 COPPER	19 COPPER	1.2 RL CR OF HSE 11.3 FROM N LINE	
			122.0 N/1ST HYD N/YELLE							
			1.1 RL CR OF HSE							

- NOTES:**
- ALL GATE VALVES ARE TO BE COUNTER-CLOCKWISE TO OPEN WITH A BLACK OPERATING NUT.
 - WATERMAIN TO BE INSTALLED BY TRENCHLESS METHODS.
 - BACKFILL IS CLASS 5 WITHIN BOULEVARD AND CLASS 3 WHEN WITHIN PAVEMENT/SIDEWALK OR WHEN WITHIN 1.0m OF PAVEMENT OR SIDEWALK.
 - WATER SERVICES ARE 19mm UNLESS OTHERWISE NOTED.
 - MINIMUM COVER TO TOP OF WATERMAIN SHALL BE 2.4m.
 - LOCATION OF ALL SERVICES TO BE CONFIRMED IN FIELD.
 - EXPOSE EXISTING WATERMAIN TO CONFIRM DEPTH PRIOR TO CONSTRUCTION.
 - ALL LEAD SERVICES TO BE RENEWED.
 - SERVICES TO BE RENEWED SHALL BE REPLACED FROM WATERMAIN TO PROPERTY LINE. ALL OTHERS TO BE RECONNECTED.

APEGM
Certificate of Authorization
SEG Engineering Inc.
No. 1432 Expiry: April 30, 2006

METRIC
WHOLE NUMBERS INDICATE MILLIMETRES
DECIMALIZED NUMBERS INDICATE METRES

EXISTING	LEGEND - PLAN	PROPOSED	EXISTING	LEGEND - PLAN	PROPOSED	EXISTING	LEGEND - PROFILE	PROPOSED
---	WATERMAIN	---	---	HYDRO	---	---	CENTER LINE	---
⊕	HYDRANT	⊕	---	M.T.S.	---	---	NORTH GUTTER LINE	---
⊙	VALVE	⊙	---	CONCRETE	---	---	SOUTH GUTTER LINE	---
---	LAND DRAINAGE SEWER	---	---	ASPHALT	---	---	WATERMAIN	---
---	WASTE WATER SEWER	---	---	PROPERTY LINE	---	---	VALVE	---
○	MANHOLE	○	---	SURVEY BAR	---	---	LAND DRAINAGE SEWER	---
□	CATCH BASIN	□	---	CURB STOP	---	---	WASTE WATER SEWER	---
△	CURB INLET	△	---	C.B. LEAD	---	---	JUNCTIONS	---
---	TRAFFIC SIGNAL	---	---	SIDEWALK	---	---	CULVERT	---
---	STEAM HT.	---	---	SIDEWALK RAMP	---	---	ANODE	---
---	GAS	---	---	ELEVATIONS	---	---	PLUG	---

LOCATION APPROVED UNDERGROUND STRUCTURES ORIGINALLY SIGNED BY D. A. Saedal JULY 19, 2005
SUPV. U/G STRUCTURES COMMITTEE DATE

B.M. ELEV.	CWM: 34-011 231.413 m
DESIGNED BY	DJ
CHECKED BY	SM
DRAWN BY	RH
APPROVED BY	IMck
HOR. SCALE:	1:250
VERT. SCALE:	1:50
RELEASED FOR CONSTRUCTION	SIGNED BY K. ZUREK P. ENG DATE APRIL 11, 2006
1 UPDATED FOR 269-2006	APR 06 DJ
NO. REVISIONS	DATE BY

SEG ENGINEERING INC.
200 TACHE AVENUE
WINNIPEG, MANITOBA
(204)-233-2113



THE CITY OF WINNIPEG
WATER AND WASTE DEPARTMENT

2006 CAPITAL WORKS
WATERMAIN RENEWALS
DE LA MORENIE STREET
170m NORTH OF YELLE STREET
TO HAMEL AVENUE

CITY DRAWING NO.
SHEET 2 OF 2
D-8812