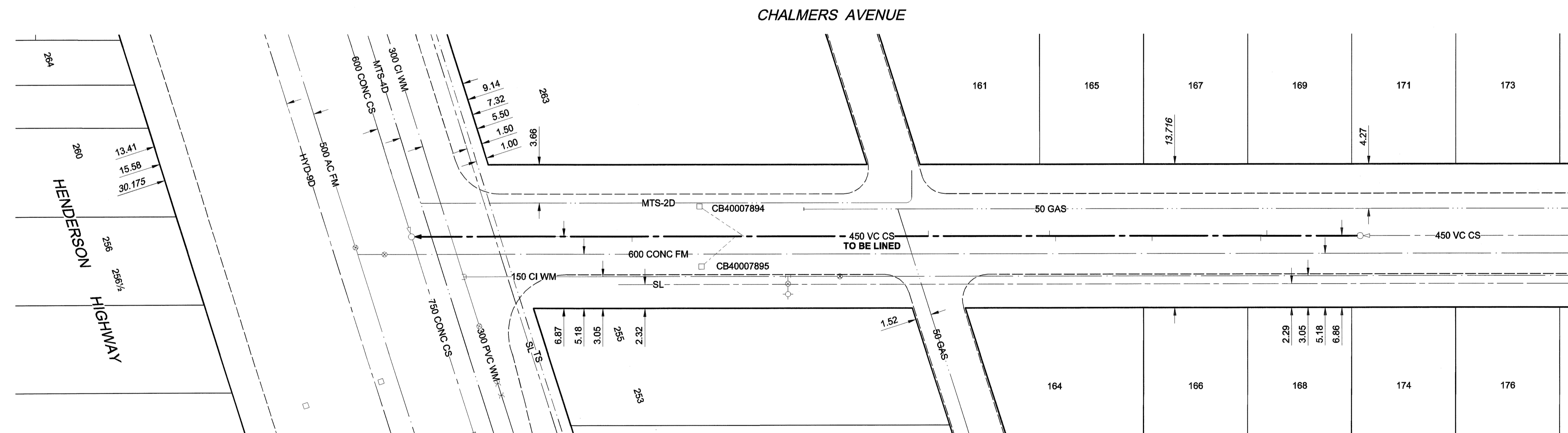
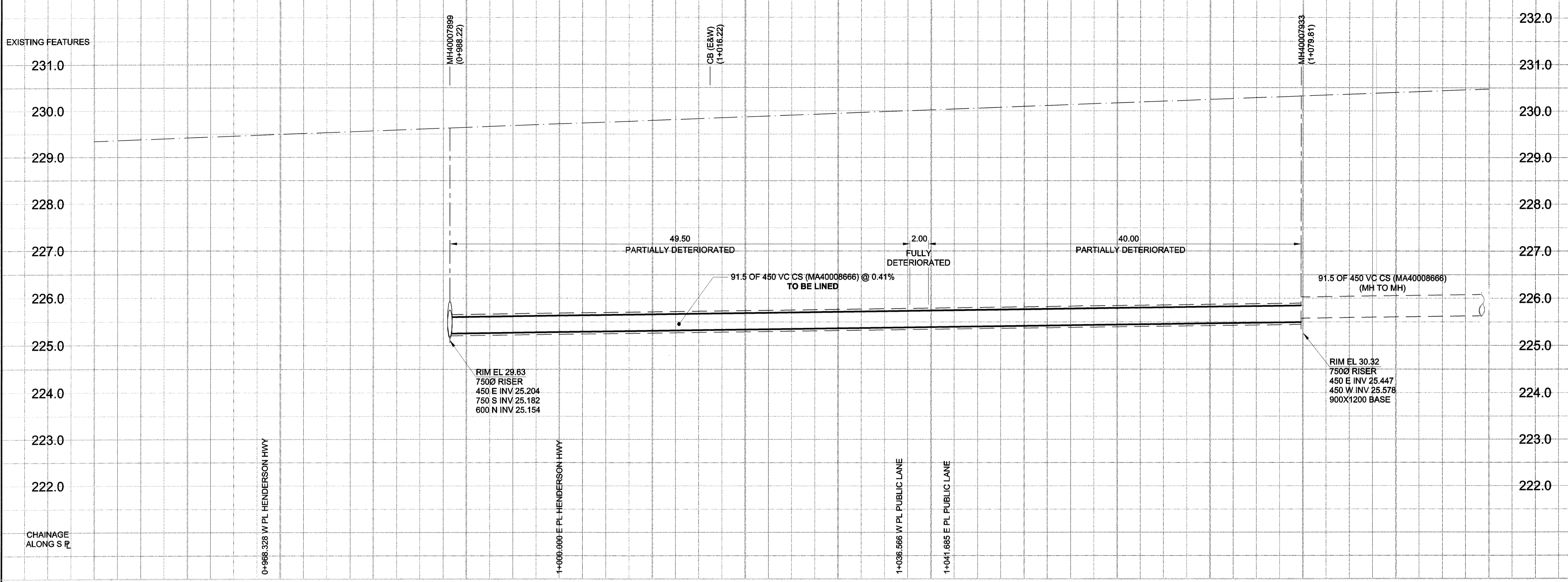


D. SIZE 22" x 34" (569mm x 864mm)

PLOT: 06/07/06 2:21:07 PM

UMA FILE NAME: D265-207-01_01-C-1001_RX.dwg Saved By: lberard



SEWER JUNCTION INFORMATION*

| REF. MH | DIST FROM | SIZE | CLOCK AT |
|------------|-----------|------|----------|
| MH40007933 | 9.00 | 150Ø | 01 |
| MH40007933 | 9.60 | 150Ø | 11 |
| MH40007933 | 20.10 | 150Ø | 11 |
| MH40007933 | 29.40 | 150Ø | 11 |
| MH40007933 | 30.00 | 150Ø | 01 |
| MH40007933 | 41.70 | 150Ø | 02 |
| MH40007933 | 59.50 | 150Ø | 01 |
| MH40007933 | 60.30 | 200Ø | 11 |
| MH40007933 | 70.30 | 150Ø | 11 |

*JUNCTION LOCATION FROM VIDEO INSPECTION

SEWER SERVICE INFORMATION

| ADDRESS | PL | TIE (SHORT/LONG) | JUNCTION TIE | REMARKS |
|-----------------|-------|------------------|----------------------------|-----------------|
| 161 CHALMERS AV | 2.93 | EWL LOT | 49.68 E OF MH AT HENDERSON | |
| 164 CHALMERS AV | 6.11 | WEL LOT | 61.72 E OF MH AT HENDERSON | |
| 165 CHALMERS AV | 1.83 | EWL LOT | 61.11 E OF MH AT HENDERSON | |
| 166 CHALMERS AV | 1.83 | WEL LOT | 70.10 E OF MH AT HENDERSON | |
| 167 CHALMERS AV | 10.55 | EWL LOT | 82.30 E OF MH AT HENDERSON | |
| 168 CHALMERS AV | 1.83 | EWL LOT | 81.69 E OF MH AT HENDERSON | |
| 169 CHALMERS AV | | | | DBLE WITH # 167 |

WARNING
 IF POWER EQUIPMENT OR EXPLOSIVES ARE TO BE USED FOR EXCAVATION ON THIS PROJECT, THE CONTRACTOR MUST:
 1) NOTIFY THE GAS COMPANY OF THE PROPOSED LOCATION OF EXCAVATION.
 2) TAKE PRECAUTION TO AVOID DAMAGE TO GAS COMPANY INSTALLATIONS.
 SEE PROVINCIAL REGULATION 140/92 FOR DETAILS

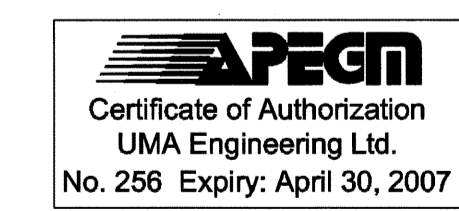
| EXISTING | LEGEND - PLAN | NEW | EXISTING | LEGEND - PLAN | NEW | EXISTING | LEGEND - PROFILE | NEW |
|----------|---------------------|---------|-----------|---------------|---------|---------------------|-------------------|---------|
| 150 WM | WATERMAIN | 150 WM | CURB STOP | REDUCER | 150 WM | WATERMAIN | HYDRANT | 150 WM |
| 300 LDS | LAND DRAINAGE SEWER | 300 LDS | VALVE | COUPLING | 300 LDS | LAND DRAINAGE SEWER | VALVE | 300 LDS |
| 250 WWS | WASTE WATER SEWER | 250 WWS | ANODE | HYDRO | 250 WWS | WASTE WATER SEWER | PAVEMENT CROWN | 250 WWS |
| ○ | MANHOLE | ● | MTS | GAS | ○ | N/W PROPERTY LINE | S/E PROPERTY LINE | ○ |
| □ | CATCH BASIN | ■ | TESTHOLE | LAMP STANDARD | ○ | N/W GUTTER | S/E GUTTER | ○ |
| △ | CURB INLET | ▲ | TREE | | | | | |
| ▭ | CULVERT | ▭ | | | | | | |
| — | PIPE ABANDONMENTS | — | | | | | | |
| + | SURVEY BAR | | | | | | | |

LOCATION APPROVED UNDERGROUND STRUCTURES
 SUPR. U/G STRUCTURES DATE COMMITTEE
 NOTE: LOCATION OF UNDERGROUND STRUCTURES AS SHOWN ARE BASED ON THE BEST INFORMATION AVAILABLE. BUT NO GUARANTEE IS GIVEN THAT ALL EXISTING UTILITIES ARE SHOWN OR THAT THE GIVEN LOCATIONS ARE EXACT. CONFIRMATION OF EXISTENCE AND EXACT LOCATION OF ALL SERVICES MUST BE OBTAINED FROM THE INDIVIDUAL UTILITIES BEFORE PROCEEDING WITH CONSTRUCTION.

BM 27-005
 ELEV 230.567m
 Henderson Hwy. & Johnson Ave. centre median. Toll in 7.5m Conc. pile, beneath Valve Box 2.3m S. of S.L. Johnson Ave. & 10.7m W. of E.L. Henderson Hwy. 12.7mm I.B. planted on N. side of Conc. pile to identify.

| NO. | REVISIONS | Y/M/D | BY |
|-----|-------------------------|----------|-----|
| 0 | ISSUED FOR CONSTRUCTION | 06/07/06 | KMB |

UMA | AECOM
 © 2006 UMA ENGINEERING LTD. ALL RIGHTS RESERVED.
 DESIGNED BY: MJR
 DRAWN BY: KMB
 HOR. SCALE: 1:250
 VERT. SCALE: 1:50
 DATE: 06/07/07



PROFESSIONAL'S SEAL
 PROVINCE OF MANITOBA
 07 July 2006
 C. C. MACEY
 REGISTERED ENGINEER
 CONSULTANT DRAWING NO. 11
 D265-207-01

THE CITY OF WINNIPEG WATER AND WASTE DEPARTMENT
2006 COMBINED SEWER RENEWALS BY CIPP LINING CONTRACT 16
CHALMERS AVENUE
 2ND MH W OF BRAZIER STREET TO MH AT HENDERSON HIGHWAY

SHEET 11 OF 28
 CITY DRAWING NUMBER 05820
 REV 0

BID OPPORTUNITY NO. 273-2006