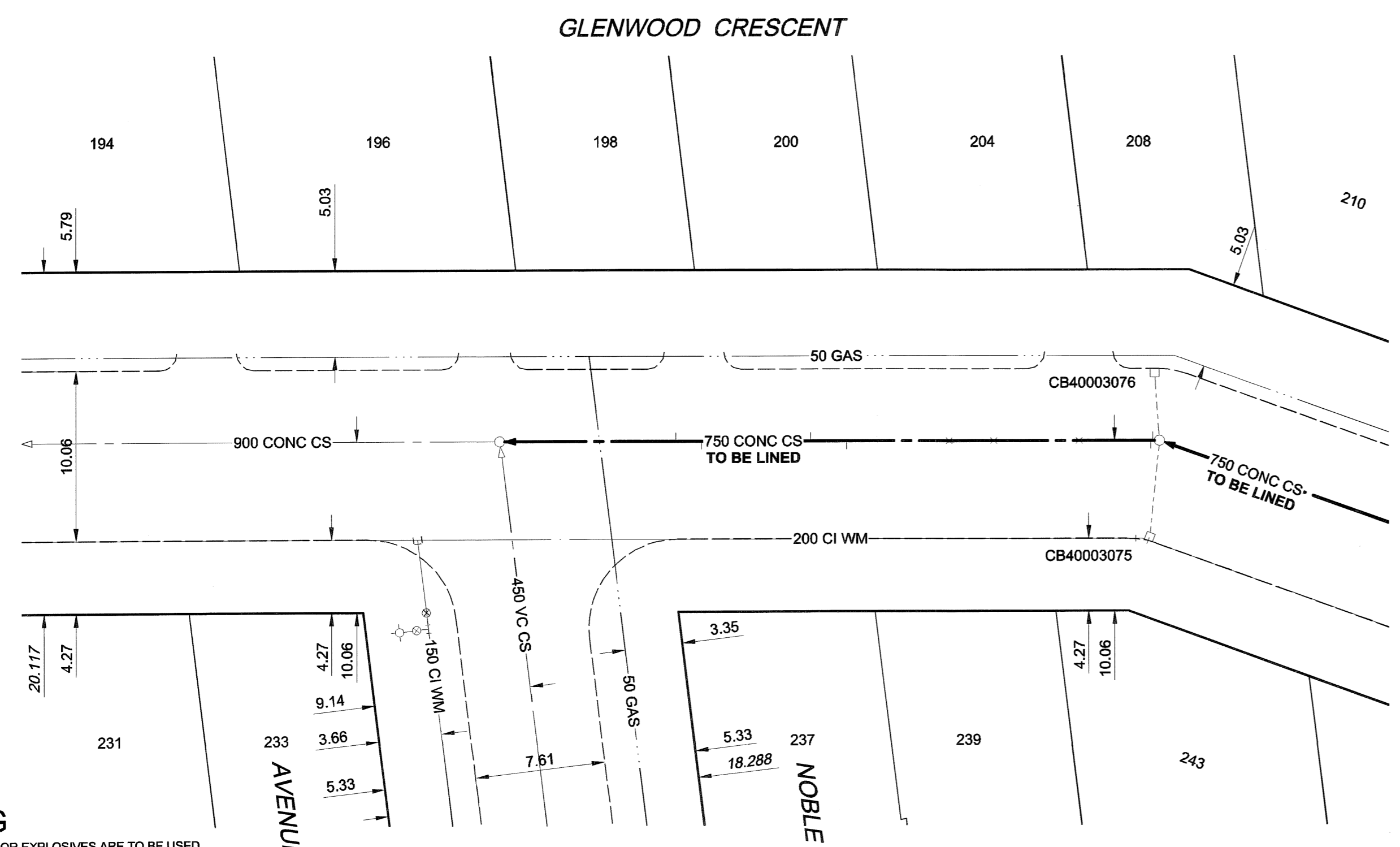
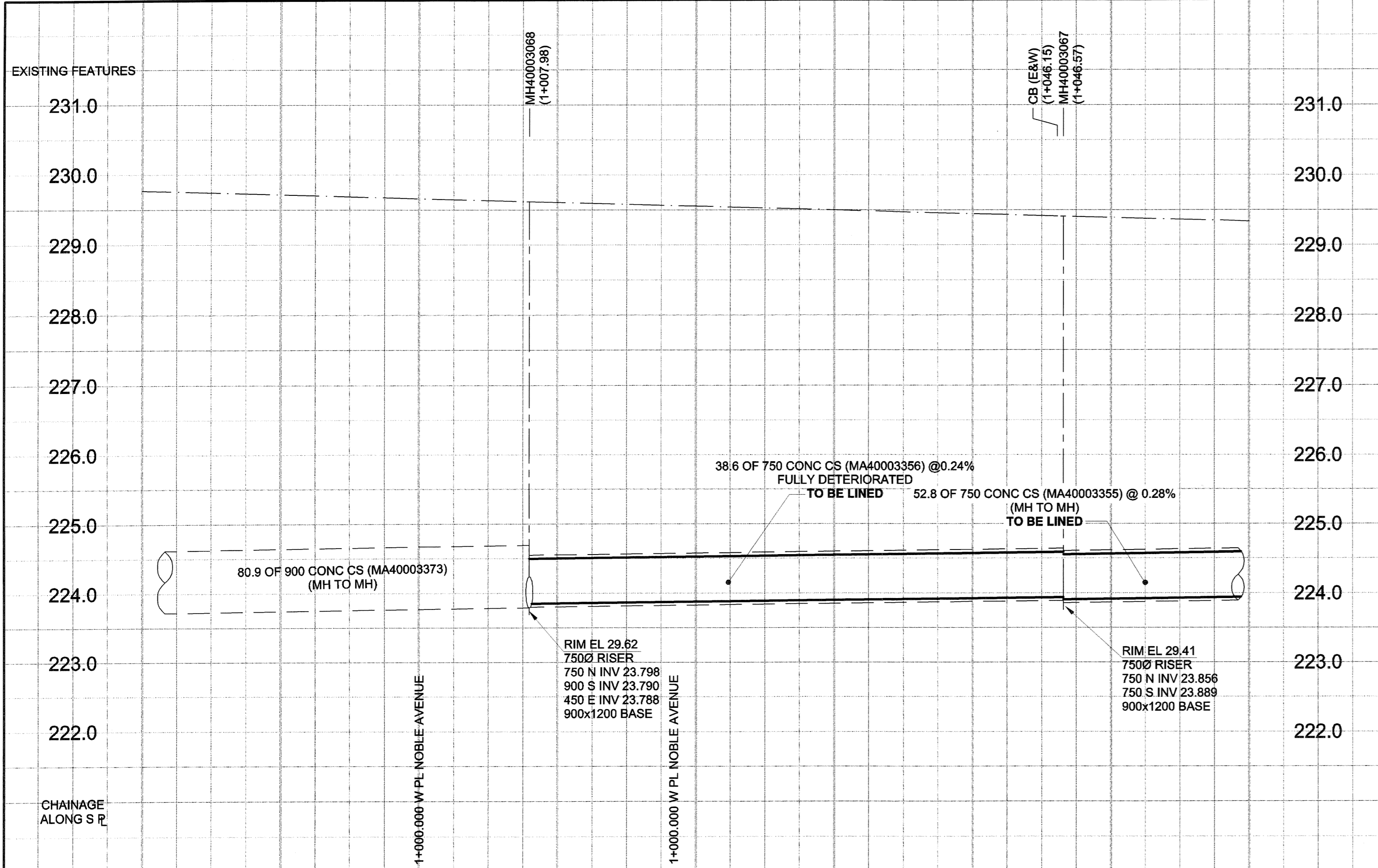


D SIZE 22" x 34" (559mm x 864mm)

PLOT: 060706 2:13:56 PM

UMA FILE NAME: D265-207-01_01-C-1002_RX.dwg Saved By: lberard



FOR FURTHER INFO SEE DWG 05822

SEWER JUNCTION INFORMATION*

REF. MH	DIST FROM REF. MH	SIZE	CLOCK AT
MH40003067	0.40	1500	02
MH40003067	0.50	1500	09
MH40003067	4.70	1500	12
MH40003067	9.70	1500	12
MH40003067	12.30	1500	12
MH40003067	18.30	1500	11
MH40003067	20.40	1500	01
MH40003067	26.80	1500	11
MH40003067	28.30	1500	01

*JUNCTION LOCATION FROM VIDEO INSPECTION
JUNCTIONS AT 12 OC DENOTED BY X

SEWER SERVICE INFORMATION

ADDRESS	PL (SHORT/LONG)	TIE	JUNCTION TIE	REMARKS
188 GLENWOOD CR	8.53 NSL LOT		9.45 N OF MH AT NOBLE	
200 GLENWOOD CR	0.91 SNL LOT		9.45 N OF MH AT NOBLE	
204 GLENWOOD CR	4.88 NSL LOT		26.80 N OF MH AT NOBLE	
238 GLENWOOD CR	6.40 SNL LOT		33.83 N OF MH AT NOBLE	
237 GLENWOOD CR	16.15 EVL LOT		26.97 E OF MH AT GLENWOOD	HOUSE SERVICED OFF OF NOBLE
239 GLENWOOD CR	3.51 SNL LOT		28.35 N OF MH AT NOBLE	

WARNING
IF POWER EQUIPMENT OR EXPLOSIVES ARE TO BE USED FOR EXCAVATION ON THIS PROJECT, THE CONTRACTOR MUST:
1) NOTIFY THE GAS COMPANY OF THE PROPOSED LOCATION OF EXCAVATION.
2) TAKE PRECAUTION TO AVOID DAMAGE TO GAS COMPANY INSTALLATIONS.
SEE PROVINCIAL REGULATION 140/92 FOR DETAILS

150 WM	WATERMAIN	150 WM	CURB STOP	150 WM	WATERMAIN	150 WM	LOCATION APPROVED UNDERGROUND STRUCTURES
	HYDRANT		REDUCER		HYDRANT		<p>DATE</p> <p>SUPR. U/G STRUCTURES COMMITTEE</p> <p>NOTE: LOCATION OF UNDERGROUND STRUCTURES AS SHOWN ARE BASED ON THE BEST INFORMATION AVAILABLE. BUT NO GUARANTEE IS GIVEN THAT ALL EXISTING UTILITIES ARE SHOWN OR THAT THE GIVEN LOCATIONS ARE EXACT. CONFIRMATION OF EXISTENCE AND EXACT LOCATION OF ALL SERVICES MUST BE OBTAINED FROM THE INDIVIDUAL UTILITIES BEFORE PROCEEDING WITH CONSTRUCTION.</p>
	VALVE		COUPLING		VALVE		
	LAND DRAINAGE SEWER		ANODE		LAND DRAINAGE SEWER		
	WASTE WATER SEWER		HYDRO		WASTE WATER SEWER		
	MANHOLE		MTS		MANHOLE		
	CATCH BASIN		GAS		CATCH BASIN		
	CURB INLET		TESTHOLE		CURB INLET		
	CULVERT		LAMP STANDARD		CULVERT		
	PIPE ABANDONMENTS		TREE		PIPE ABANDONMENTS		
	SURVEY BAR				SURVEY BAR		
	EXISTING		NEW		EXISTING		
	LEGEND - PLAN		LEGEND - PLAN		LEGEND - PROFILE		

APCGM
Certificate of Authorization
UMA Engineering Ltd.
No. 256 Expiry: April 30, 2007

BID OPPORTUNITY NO. 273-2006

N.E. Cor. Beatrice St. & Carmen Ave., Tbl. on top of 0.05m dia. x 2.4m iron pipe in Valve Box 2.7m W. of E.L. of Beatrice St. & 5.2m S. of N.L. of Carmen Ave.

BM 27-028
ELEV 228.386m

DESIGNED BY	MJR	CHECKED BY	A. Delami
DRAWN BY	KMB	APPROVED BY	<i>[Signature]</i>
HOR. SCALE	1:250	RELEASED FOR CONSTRUCTION	<i>[Signature]</i>
VERT. SCALE	1:50	DATE	06/07/07

0 ISSUED FOR CONSTRUCTION 06/07/06 KMB
NO. REVISIONS YY/MM/DD BY

UMA | AECOM

© 2006 UMA ENGINEERING LTD. ALL RIGHTS RESERVED.

PROFESSIONAL'S SEAL
PROVINCE OF MANITOBA
57 July 2006
C.C. MACEY
REGISTERED ENGINEER

CONSULTANT DRAWING NO. 12
D265-207-01

THE CITY OF WINNIPEG
WATER AND WASTE DEPARTMENT

2006 COMBINED SEWER RENEWALS
BY CIPP LINING
CONTRACT 16

GLENWOOD CRESCENT
1ST MH N OF NOBLE AVENUE
TO MH AT NOBLE AVENUE

SHEET 12 OF 28
CITY DRAWING NUMBER
05821
REV 0