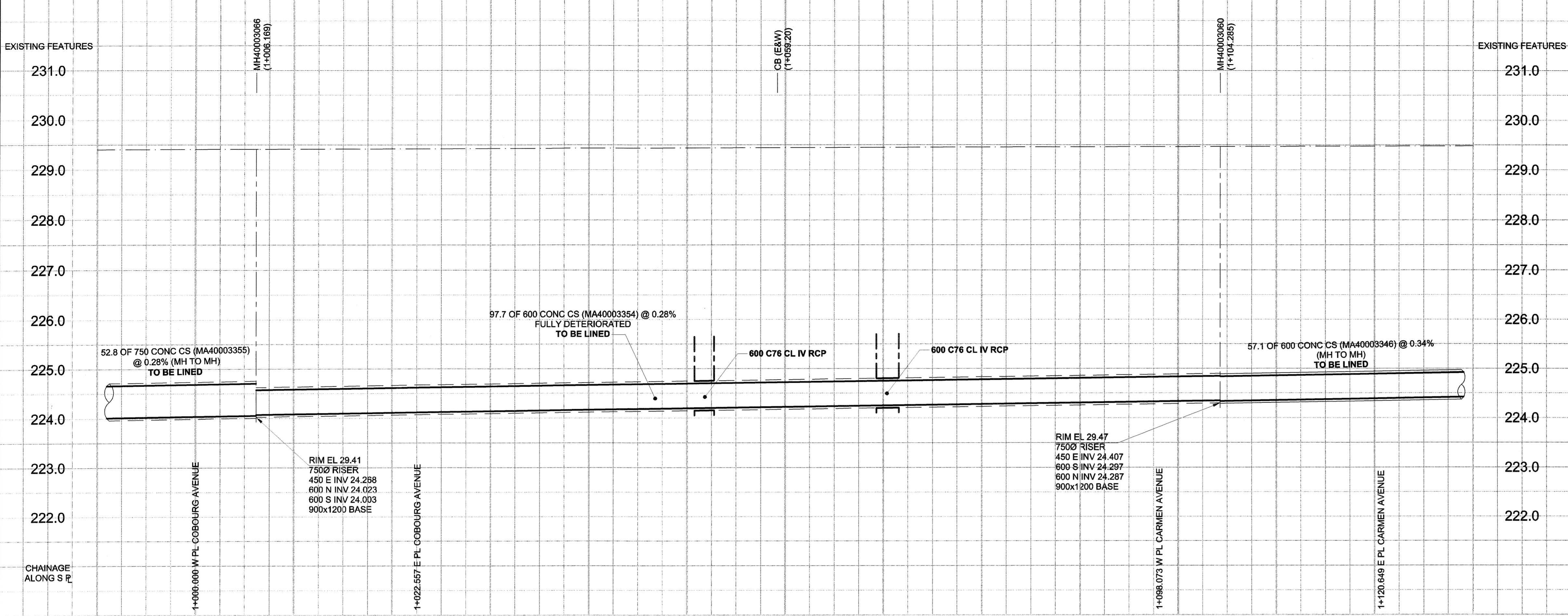


D SIZE 22" x 34" (559mm x 864mm)

PLOT: 06/07/06 2:13:48 PM

UMA FILE NAME: D265-207-01_01-C-1004_RX.dwg Saved By: lberard



EXISTING FEATURES

231.0

230.0

229.0

228.0

227.0

226.0

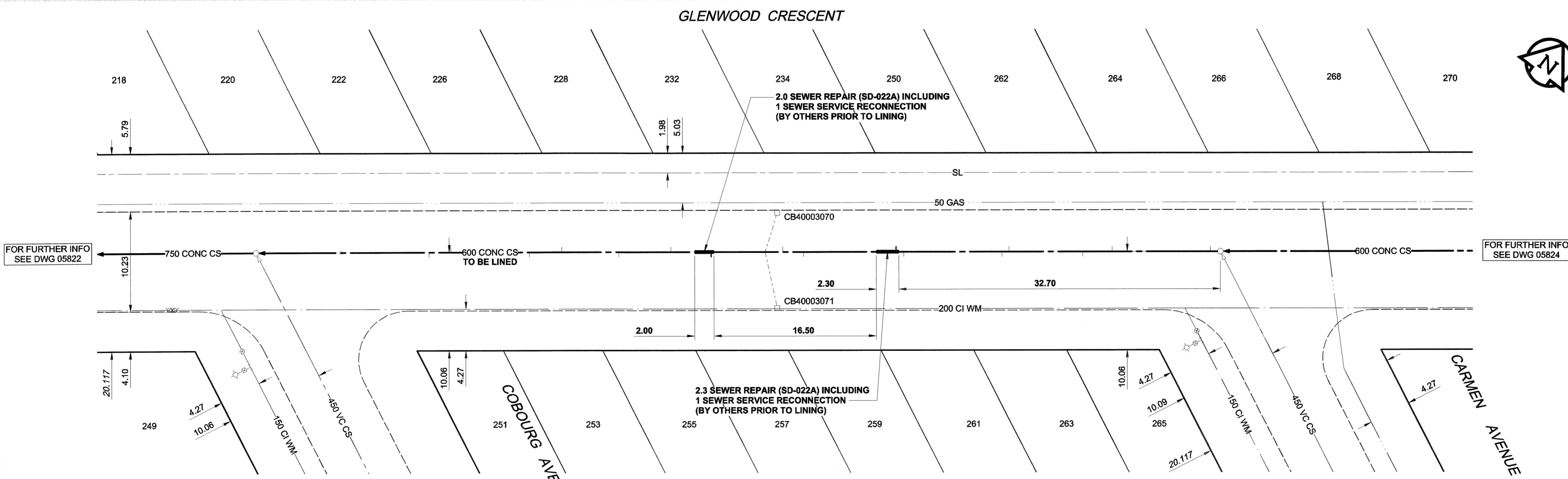
225.0

224.0

223.0

222.0

EXISTING FEATURES



SEWER SERVICE INFORMATION				
ADDRESS	PL TIE (SHORT/LONG)	JUNCTION TIE	REMARKS	
220 GLENWOOD CR	9.14 SNL LOT	NO INFORMATION AVAILABLE		
222 GLENWOOD CR	4.27 NSL LOT	7.32 N OF MH AT COBOURG		
226 GLENWOOD CR	4.88 NSL LOT	18.59 N OF MH AT COBOURG		
228 GLENWOOD CR	9.45 SNL LOT	30.18 N OF MH AT COBOURG		
232 GLENWOOD CR	2.13 NSL LOT	41.15 N OF MH AT COBOURG		
234 GLENWOOD CR	2.44 NSL LOT	52.43 N OF MH AT COBOURG		
250 GLENWOOD CR	1.83 NSL LOT	56.39 N OF MH AT COBOURG		
251 GLENWOOD CR	3.99 NSL LOT	16.46 N OF MH AT COBOURG		
253 GLENWOOD CR	11.58 NSL LOT	26.52 N OF MH AT COBOURG		
255 GLENWOOD CR	3.23 SNL LOT	35.97 N OF MH AT COBOURG		
257 GLENWOOD CR			NO INFORMATION AVAILABLE	
259 GLENWOOD CR	5.67 SNL LOT	54.86 N OF MH AT COBOURG		
261 GLENWOOD CR			NO INFORMATION AVAILABLE	
262 GLENWOOD CR	1.22 NSL LOT	75.59 N OF MH AT COBOURG		
263 GLENWOOD CR	5.18 SNL LOT	74.98 N OF MH AT COBOURG		
264 GLENWOOD CR	2.13 NSL LOT	86.26 N OF MH AT COBOURG		
265 GLENWOOD CR			NO INFORMATION AVAILABLE	
266 GLENWOOD CR	10.06 SNL LOT	96.62 N OF MH AT COBOURG		

SEWER JUNCTION INFORMATION*			
REF. MH	DIST FROM REF. MH	SIZE	CLOCK AT
MH40003060	1.00	1500	01
MH40003060	11.00	1500	01
MH40003060	14.00	1500	11
MH40003060	21.50	1500	01
MH40003060	22.20	1500	11
MH40003060	22.20	1500	11
MH40003060	33.00	1500	12
MH40003060	33.00	1500	01
MH40003060	42.40	1500	11
MH40003060	44.50	1500	01
MH40003060	46.30	2000	01
MH40003060	46.30	2000	11
MH40003060	51.80	1500	11
MH40003060	55.90	1500	01
MH40003060	61.20	1500	11
MH40003060	67.00	1500	01
MH40003060	70.30	1500	11
MH40003060	78.30	1500	01
MH40003060	80.50	1500	11
MH40003060	89.50	1500	12

*JUNCTION LOCATION FROM VIDEO INSPECTION JUNCTIONS AT 12 OC DENOTED BY X

WARNING

IF POWER EQUIPMENT OR EXPLOSIVES ARE TO BE USED FOR EXCAVATION ON THIS PROJECT, THE CONTRACTOR MUST:

- 1) NOTIFY THE GAS COMPANY OF THE PROPOSED LOCATION OF EXCAVATION.
- 2) TAKE PRECAUTION TO AVOID DAMAGE TO GAS COMPANY INSTALLATIONS. SEE PROVINCIAL REGULATION 140/92 FOR DETAILS

EXISTING	LEGEND - PLAN	NEW	EXISTING	LEGEND - PLAN	NEW	EXISTING	LEGEND - PROFILE	NEW
150 WM	WATERMAIN	150 WM	150 WM	WATERMAIN	150 WM	150 WM	WATERMAIN	150 WM
300 LDS	LAND DRAINAGE SEWER	300 LDS	300 LDS	LAND DRAINAGE SEWER	300 LDS	300 LDS	LAND DRAINAGE SEWER	300 LDS
250 WWS	WASTE WATER SEWER	250 WWS	250 WWS	WASTE WATER SEWER	250 WWS	250 WWS	WASTE WATER SEWER	250 WWS
○	MANHOLE	●	○	MANHOLE	●	○	MANHOLE	●
□	CATCH BASIN	■	□	CATCH BASIN	■	□	CATCH BASIN	■
△	CURB INLET	▲	△	CURB INLET	▲	△	CURB INLET	▲
▭	CULVERT	▭	▭	CULVERT	▭	▭	CULVERT	▭
—	PIPE ABANDONMENTS	—	—	PIPE ABANDONMENTS	—	—	PIPE ABANDONMENTS	—
+	SURVEY BAR	+	+	SURVEY BAR	+	+	SURVEY BAR	+
○	HYDRANT	○	○	HYDRANT	○	○	HYDRANT	○
○	VALVE	○	○	VALVE	○	○	VALVE	○
○	ANODE	○	○	ANODE	○	○	ANODE	○
○	MTS	○	○	MTS	○	○	MTS	○
○	GAS	○	○	GAS	○	○	GAS	○
○	TESTHOLE	○	○	TESTHOLE	○	○	TESTHOLE	○
○	LAMP STANDARD	○	○	LAMP STANDARD	○	○	LAMP STANDARD	○
○	TREE	○	○	TREE	○	○	TREE	○

LOCATION APPROVED UNDERGROUND STRUCTURES

SUPR. U/G STRUCTURES DATE COMMITTEE

NOTE: LOCATION OF UNDERGROUND STRUCTURES AS SHOWN ARE BASED ON THE BEST INFORMATION AVAILABLE. BUT NO GUARANTEE IS GIVEN THAT ALL EXISTING UTILITIES ARE SHOWN OR THAT THE GIVEN LOCATIONS ARE EXACT. CONFIRMATION OF EXISTENCE AND EXACT LOCATION OF ALL SERVICES MUST BE OBTAINED FROM THE INDIVIDUAL UTILITIES BEFORE PROCEEDING WITH CONSTRUCTION.

BM 27-028 N.E. Cor. Beatrice St. & Carmen Ave., Tbl on top of 0.05m dia. x 2.4m iron pipe in Valve Box 2.7m W. of E.L. of Beatrice St. & 5.2m s. of N.L. of Carmen Ave. ELEV 228.386m

UMA AECOM

© 2006 UMA ENGINEERING LTD. ALL RIGHTS RESERVED.

DESIGNED BY: MJR

CHECKED BY: A. Delaney

DRAWN BY: KMB

APPROVED BY: Suzanne LeBlanc

HOR. SCALE: 1:250

VERT. SCALE: 1:50

RELEASED FOR CONSTRUCTION

DATE: 06/07/06

DATE: 06/07/06

APEGM

Certificate of Authorization

UMA Engineering Ltd.

No. 256 Expiry: April 30, 2007

PROFESSIONAL'S SEAL

PROVINCE OF MANITOBA

07 July 2006

C. C. MACEY

REGISTERED ENGINEER

CONSULTANT DRAWING NO. 14

D265-207-01

THE CITY OF WINNIPEG

WATER AND WASTE DEPARTMENT

2006 COMBINED SEWER RENEWALS

BY CIPP LINING CONTRACT 16

GLENWOOD CRESCENT

MH AT CARMEN AVENUE TO MH AT COBOURG AVENUE

SHEET 14 OF 28

CITY DRAWING NUMBER

05823

REV 0

BID OPPORTUNITY NO. 273-2006