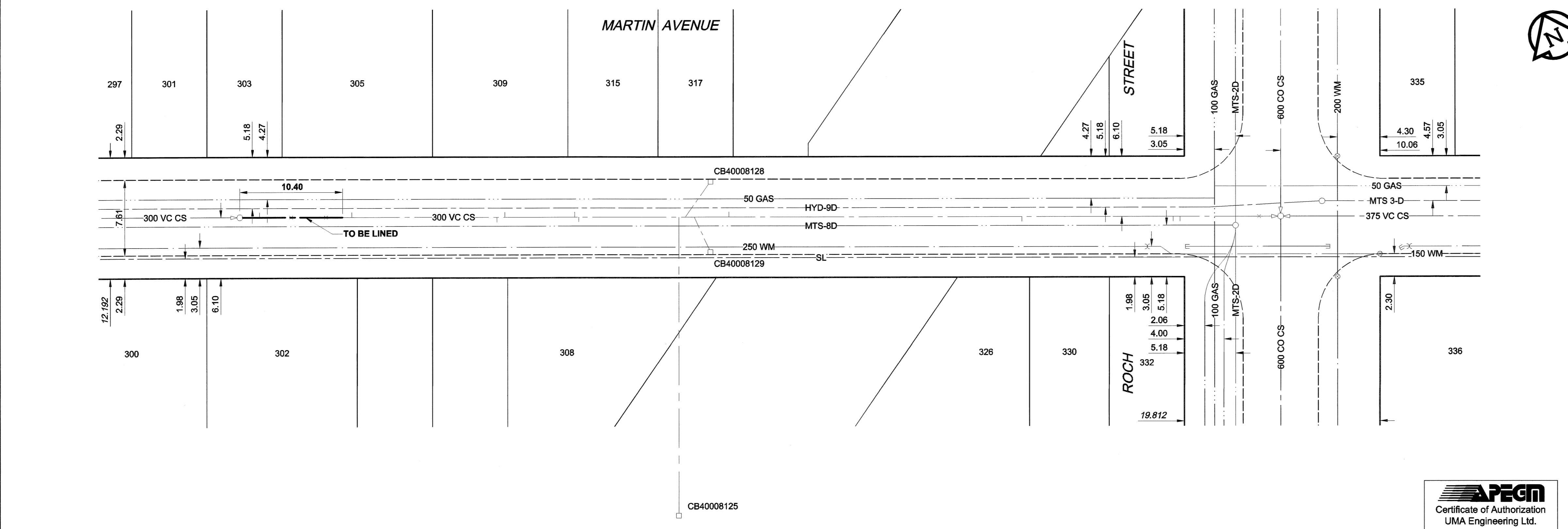
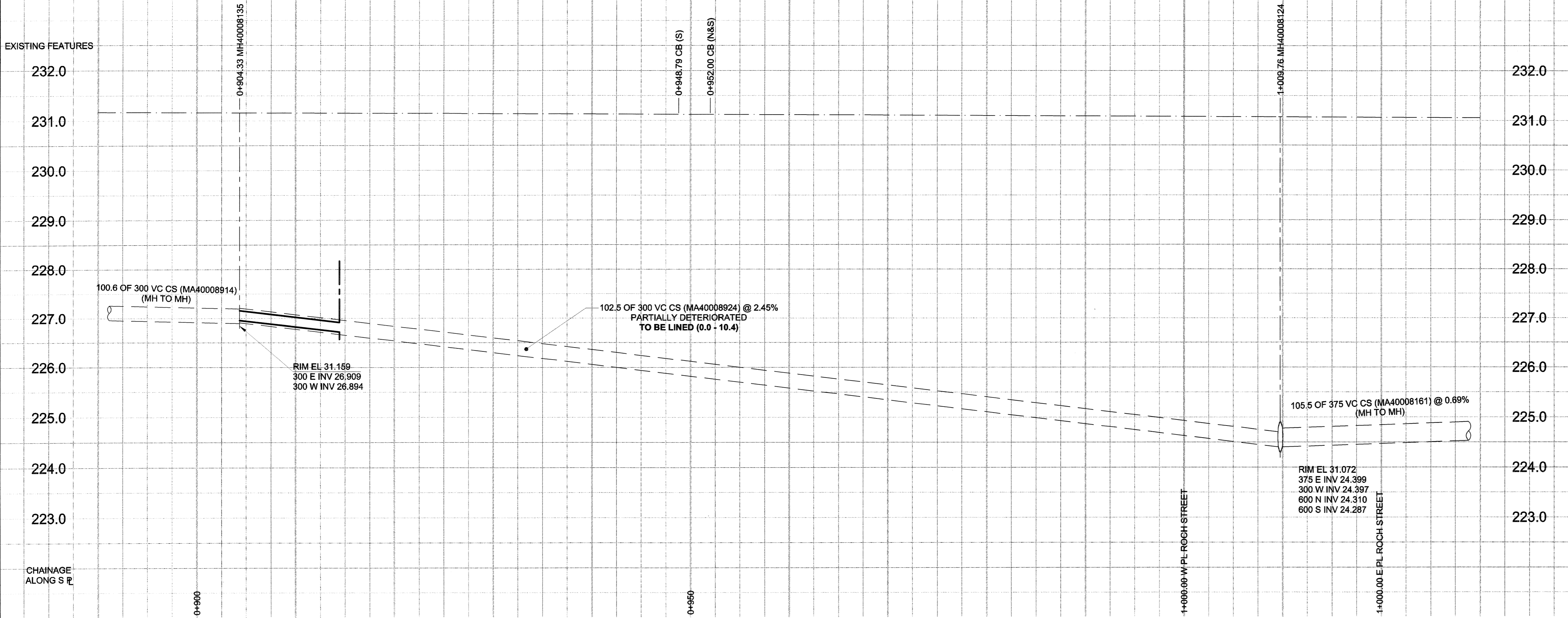


D SIZE 22" x 34" (599mm x 864mm)

PLOT: 06/07/06 2:13:02 PM

UMA FILE NAME: D265-207-01_01-C-1012_RX.dwg_Saved By: kberard



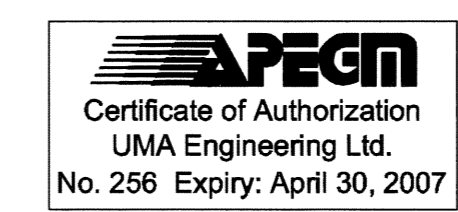
SEWER JUNCTION INFORMATION*

REF. MH	DIST FROM REF. MH	SIZE	CLOCK AT
MH40008135	2.00	1500	10
MH40008135	2.80	1500	02
MH40008135	5.20	1500	12
MH40008124	2.20	1500	12
MH40008124	10.20	1500	11
MH40008124	10.90	1500	10
MH40008124	26.20	1500	10
MH40008124	55.90	1500	02
MH40008124	59.40	2000	10
MH40008124	60.30	2000	02
MH40008124	71.10	1500	10
MH40008124	71.50	1500	01
MH40008124	78.60	1500	01
MH40008124	79.40	1500	10
MH40008124	84.10	1500	02
MH40008124	86.70	1500	12

*JUNCTION LOCATIONS FROM VIDEO INSPECTION
JUNCTIONS AT 12 OC DENOTED BY X

SEWER SERVICE INFORMATION

ADDRESS	PL	TIE (SHORT/LONG)	JUNCTION TIE	REMARKS
300 MARTIN AV	1.98	WEL LOT	7.32 W OF 1ST MH W OF ROCH	
301 MARTIN AV	5.03	EWL LOT	7.92 W OF 1ST MH W OF ROCH	
302 MARTIN AV				NO INFORMATION AVAILABLE
303 MARTIN AV	1.83	WEL LOT	101.19 W OF MH AT ROCH	
305 MARTIN AV	7.32	EWL LOT	94.49 W OF MH AT ROCH	
308 MARTIN AV	10.67	WEL LOT	79.86 W OF MH AT ROCH	
309 MARTIN AV	2.13	WEL LOT	79.25 W OF MH AT ROCH	
311 MARTIN AV	7.62	EWL LOT	71.78 W OF MH AT ROCH	
315 MARTIN AV	1.83	EWL LOT		
317 MARTIN AV	6.40	WEL LOT	56.39 W OF MH AT ROCH	
326 MARTIN AV				NO INFORMATION AVAILABLE
328 MARTIN AV	4.57	WEL LOT	26.82 W OF MH AT ROCH	
330 MARTIN AV				NO INFORMATION AVAILABLE
332 MARTIN AV				NO INFORMATION AVAILABLE



BID OPPORTUNITY NO. XXXX

EXISTING	NEW	EXISTING	NEW	EXISTING	NEW	EXISTING	NEW
150 WM	150 WM	150 WM	150 WM	300 LDS	300 LDS	250 WWS	250 WWS
WATERMAIN	WATERMAIN	CURB STOP	CURB STOP	LAND DRAINAGE SEWER	LAND DRAINAGE SEWER	WASTE WATER SEWER	WASTE WATER SEWER
HYDRANT	HYDRANT	REDUCER	REDUCER	VALVE	VALVE	MANHOLE	MANHOLE
VALVE	VALVE	COUPLING	COUPLING	ANODE	ANODE	CATCH BASIN	CATCH BASIN
LAND DRAINAGE SEWER	LAND DRAINAGE SEWER	HYDRO	HYDRO	WASTE WATER SEWER	WASTE WATER SEWER	CURB INLET	CURB INLET
MANHOLE	MANHOLE	MTS	MTS	MANHOLE	MANHOLE	CULVERT	CULVERT
CATCH BASIN	CATCH BASIN	GAS	GAS	CATCH BASIN	CATCH BASIN	PIPE ABANDONMENTS	PIPE ABANDONMENTS
CURB INLET	CURB INLET	TESTHOLE	TESTHOLE	CULVERT	CULVERT	SURVEY BAR	SURVEY BAR
CULVERT	CULVERT	LAMP STANDARD	LAMP STANDARD	PIPE ABANDONMENTS	PIPE ABANDONMENTS		
PIPE ABANDONMENTS	PIPE ABANDONMENTS	TREE	TREE	SURVEY BAR	SURVEY BAR		
SURVEY BAR	SURVEY BAR						
LEGEND - PLAN	LEGEND - PLAN	LEGEND - PROFILE	LEGEND - PROFILE				

LOCATION APPROVED UNDERGROUND STRUCTURES

DATE: _____

NOTE: LOCATION OF UNDERGROUND STRUCTURES AS SHOWN ARE BASED ON THE BEST INFORMATION AVAILABLE. BUT NO GUARANTEE IS GIVEN THAT ALL EXISTING UTILITIES ARE SHOWN OR THAT THE GIVEN LOCATIONS ARE EXACT. CONFIRMATION OF EXISTENCE AND EXACT LOCATION OF ALL SERVICES MUST BE OBTAINED FROM THE INDIVIDUAL UTILITIES BEFORE PROCEEDING WITH CONSTRUCTION.

NO.	REVISIONS	YY/MM/DD	BY
0	ISSUED FOR CONSTRUCTION	06/07/06	KMB

DESIGNED BY	MJR	CHECKED BY	A. Delaw
DRAWN BY	KMB	APPROVED BY	[Signature]
HOR. SCALE	1:250	RELEASED FOR CONSTRUCTION	[Signature]
VERT. SCALE		DATE	July 07/06

© 2006 UMA ENGINEERING LTD. ALL RIGHTS RESERVED.

CONSULTANT DRAWING NO. 22
D265-207-01

THE CITY OF WINNIPEG WATER AND WASTE DEPARTMENT

2006 COMBINED SEWER RENEWALS BY CIPP LINING CONTRACT 16

MARTIN AVENUE
3RD MH E OF BRAZIER STREET TO MH AT ROCH STREET

SHEET 22 OF 28
CITY DRAWING NUMBER 05831
REV 0