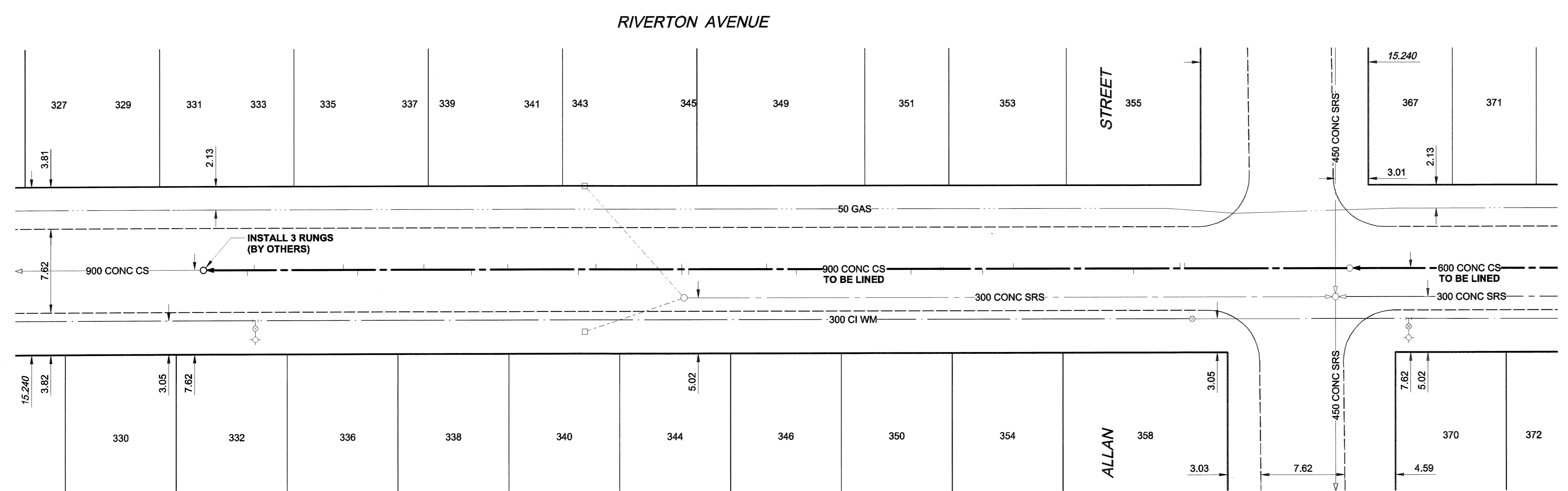
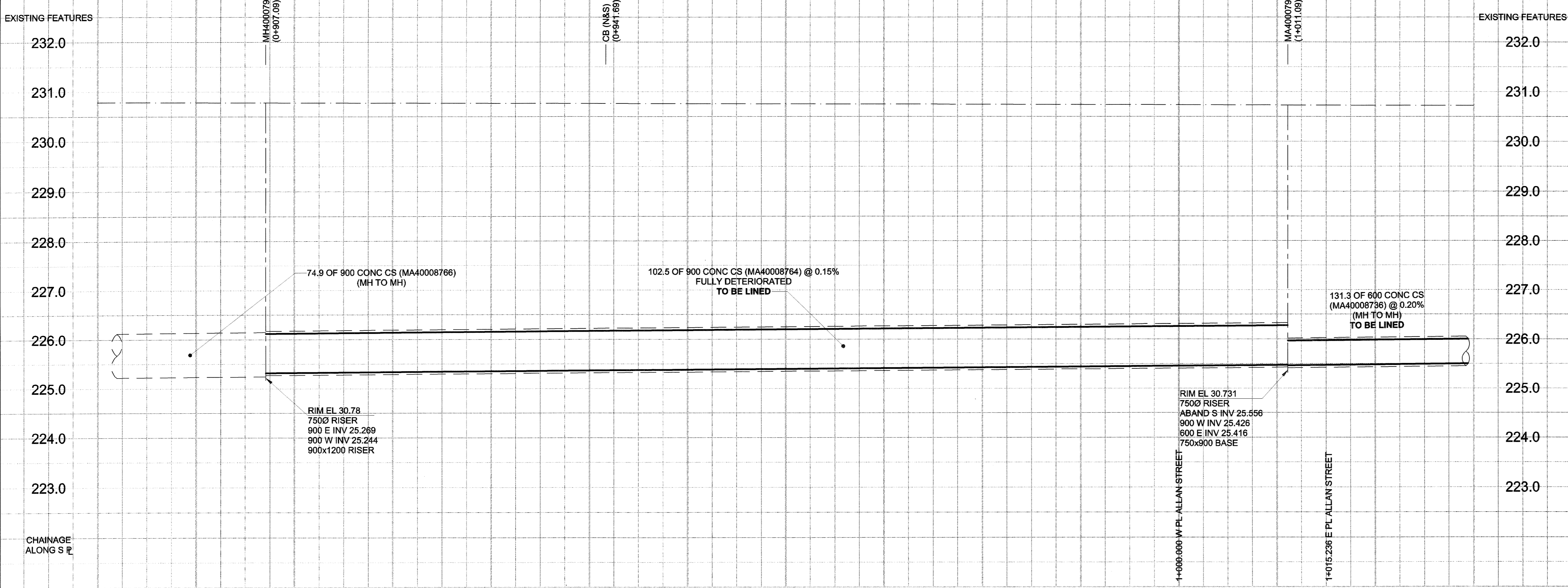


D SIZE 22" x 34" (559mm x 864mm)

PLOT: 06/07/06 2:12:42 PM

UMA FILE NAME: D265-207-01\_01-C-1016\_RX.dwg Saved By: kberard



**SEWER JUNCTION INFORMATION**

REF. MH	DIST FROM REF. MH	SIZE	CLOCK AT
MH40007981	15.00	1500	02
MH40007981	15.40	1500	02
MH40007981	19.60	1500	10
MH40007981	30.50	1500	02
MH40007981	33.30	1500	11
MH40007981	37.00	1500	12
MH40007981	37.00	1500	12
MH40007981	38.80	1500	10
MH40007981	50.20	1500	09
MH40007981	52.90	1500	02
MH40007981	60.00	1500	10
MH40007981	60.60	2000	01
MH40007981	60.60	2000	11
MH40007981	64.70	1500	01
MH40007981	68.40	1500	02
MH40007981	70.00	1500	10
MH40007981	76.40	1500	02
MH40007981	79.70	1500	10
MH40007981	84.00	1500	02
MH40007981	90.00	1500	10
MH40007981	91.30	1500	03
MH40007981	99.40	1500	02
MH40007981	100.00	1500	10

\*JUNCTION INFORMATION FROM VIDEO INSPECTION  
JUNCTIONS AT 12 OC DENOTED BY X

**SEWER SERVICE INFORMATION**

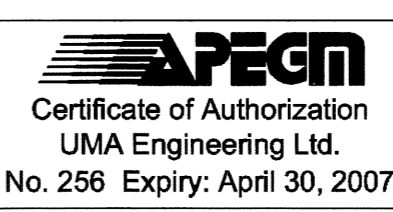
ADDRESS	PL	TIE	JUNCTION TIE	REMARKS
331 RIVERTON AV				NO INFORMATION AVAILABLE
332 RIVERTON AV	2.13	WEL LOT	1.52 E OF 1ST MH E OF STRADACONA	NO INFORMATION AVAILABLE
333 RIVERTON AV				NO INFORMATION AVAILABLE
335 RIVERTON AV				NO INFORMATION AVAILABLE
336 RIVERTON AV	2.74	EWL LOT	11.58 E OF 1ST MH E OF STRADACONA	NO INFORMATION AVAILABLE
337 RIVERTON AV				NO INFORMATION AVAILABLE
338 RIVERTON AV	3.66	EWL LOT	21.64 E OF 1ST MH E OF STRADACONA	NO INFORMATION AVAILABLE
339 RIVERTON AV				NO INFORMATION AVAILABLE
340 RIVERTON AV				NO INFORMATION AVAILABLE
341 RIVERTON AV				NO INFORMATION AVAILABLE
343 RIVERTON AV				NO INFORMATION AVAILABLE
344 RIVERTON AV				NO INFORMATION AVAILABLE
345 RIVERTON AV				NO INFORMATION AVAILABLE
346 RIVERTON AV	6.28	EWL LOT	NO INFORMATION AVAILABLE	
349 RIVERTON AV	2.13	EWL LOT	48.77 E OF 1ST MH E OF STRADACONA	NO INFORMATION AVAILABLE
350 RIVERTON AV				NO INFORMATION AVAILABLE
353 RIVERTON AV				NO INFORMATION AVAILABLE
351 RIVERTON AV				NO INFORMATION AVAILABLE
354 RIVERTON AV	0.91	EWL LOT	88.88 E OF 1ST MH E OF STRADACONA	NO INFORMATION AVAILABLE
355 RIVERTON AV	5.49	EWL LOT	86.97 E OF 1ST MH E OF STRADACONA	NO INFORMATION AVAILABLE
358 RIVERTON AV	3.35	WEL LOT	81.96 E OF 1ST MH E OF STRADACONA	NO INFORMATION AVAILABLE

**WARNING**  
IF POWER EQUIPMENT OR EXPLOSIVES ARE TO BE USED FOR EXCAVATION ON THIS PROJECT, THE CONTRACTOR MUST:  
1) NOTIFY THE GAS COMPANY OF THE PROPOSED LOCATION OF EXCAVATION.  
2) TAKE PRECAUTION TO AVOID DAMAGE TO GAS COMPANY INSTALLATIONS.  
SEE PROVINCIAL REGULATION 140/92 FOR DETAILS

EXISTING	LEGEND - PLAN	NEW	EXISTING	LEGEND - PLAN	NEW	EXISTING	LEGEND - PROFILE	NEW
150 WM	WATERMAIN	150 WM	150 WM	WATERMAIN	150 WM	150 WM	WATERMAIN	150 WM
300 LDS	LAND DRAINAGE SEWER	300 LDS	300 LDS	LAND DRAINAGE SEWER	300 LDS	300 LDS	LAND DRAINAGE SEWER	300 LDS
250 WWS	WASTE WATER SEWER	250 WWS	250 WWS	WASTE WATER SEWER	250 WWS	250 WWS	WASTE WATER SEWER	250 WWS
○	MANHOLE	●	○	MANHOLE	●	○	MANHOLE	●
□	CATCH BASIN	■	□	CATCH BASIN	■	□	CATCH BASIN	■
△	CURB INLET	▲	△	CURB INLET	▲	△	CURB INLET	▲
▭	CULVERT	▭	▭	CULVERT	▭	▭	CULVERT	▭
—	PIPE ABANDONMENTS	—	—	PIPE ABANDONMENTS	—	—	PIPE ABANDONMENTS	—
+	SURVEY BAR	+	+	SURVEY BAR	+	+	SURVEY BAR	+
○	HYDRANT	○	○	HYDRANT	○	○	HYDRANT	○
○	VALVE	○	○	VALVE	○	○	VALVE	○
○	ANODE	○	○	ANODE	○	○	ANODE	○
○	MTS	○	○	MTS	○	○	MTS	○
○	GAS	○	○	GAS	○	○	GAS	○
○	TESTHOLE	○	○	TESTHOLE	○	○	TESTHOLE	○
○	LAMP STANDARD	○	○	LAMP STANDARD	○	○	LAMP STANDARD	○
○	TREE	○	○	TREE	○	○	TREE	○
○	REDUCER	○	○	REDUCER	○	○	REDUCER	○
○	COUPLING	○	○	COUPLING	○	○	COUPLING	○
○	HYDRO	○	○	HYDRO	○	○	HYDRO	○
○	N/W PROPERTY LINE	○	○	N/W PROPERTY LINE	○	○	N/W PROPERTY LINE	○
○	S/E PROPERTY LINE	○	○	S/E PROPERTY LINE	○	○	S/E PROPERTY LINE	○
○	N/W GUTTER	○	○	N/W GUTTER	○	○	N/W GUTTER	○
○	S/E GUTTER	○	○	S/E GUTTER	○	○	S/E GUTTER	○

**LOCATION APPROVED UNDERGROUND STRUCTURES**  
SUPR. U/G STRUCTURES COMMITTEE DATE \_\_\_\_\_  
NOTE: LOCATION OF UNDERGROUND STRUCTURES AS SHOWN ARE BASED ON THE BEST INFORMATION AVAILABLE. BUT NO GUARANTEE IS GIVEN THAT ALL EXISTING UTILITIES ARE SHOWN OR THAT THE GIVEN LOCATIONS ARE EXACT. CONFIRMATION OF EXISTENCE AND EXACT LOCATION OF ALL SERVICES MUST BE OBTAINED FROM THE INDIVIDUAL UTILITIES BEFORE PROCEEDING WITH CONSTRUCTION.

UMA AECOM  
© 2006 UMA ENGINEERING LTD. ALL RIGHTS RESERVED.  
DESIGNED BY: MJR  
CHECKED BY: A. Delam  
DRAWN BY: KMB  
APPROVED BY: [Signature]  
HOR. SCALE: 1:250  
VERT. SCALE: 1:50  
RELEASED FOR CONSTRUCTION  
DATE: 06/07/06  
ISSUED FOR CONSTRUCTION 06/07/06 KMB  
NO. REVISIONS YYYMMDD BY



**THE CITY OF WINNIPEG WATER AND WASTE DEPARTMENT**  
2006 COMBINED SEWER RENEWALS  
BY CIPP LINING  
CONTRACT 16  
RIVERTON AVENUE  
MH AT ALLAN STREET  
TO 1ST MH W OF ALLAN STREET

SHEET 26 OF 28  
CITY DRAWING NUMBER  
**05855**  
REV 0

BID OPPORTUNITY NO. 273-2006