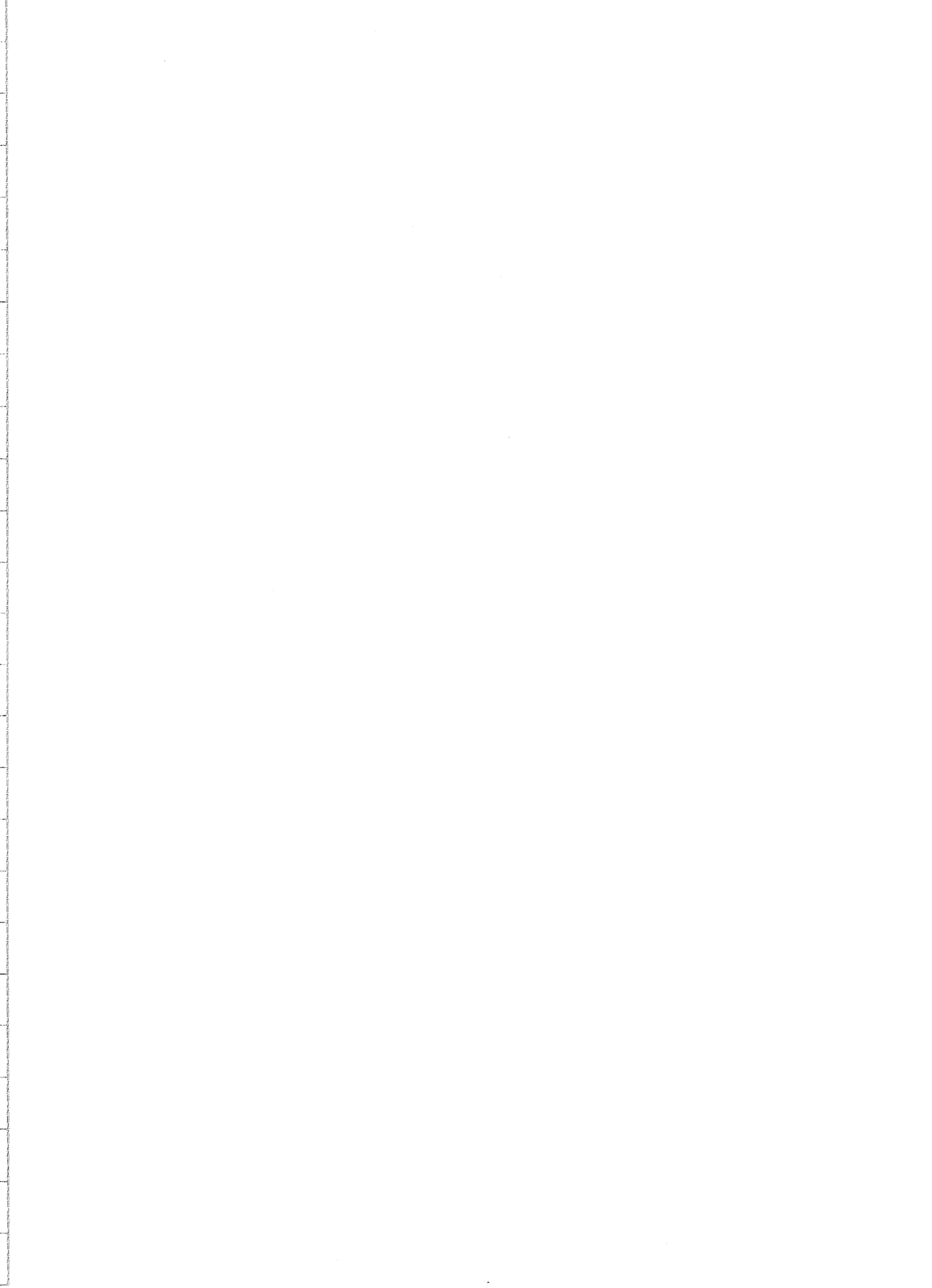
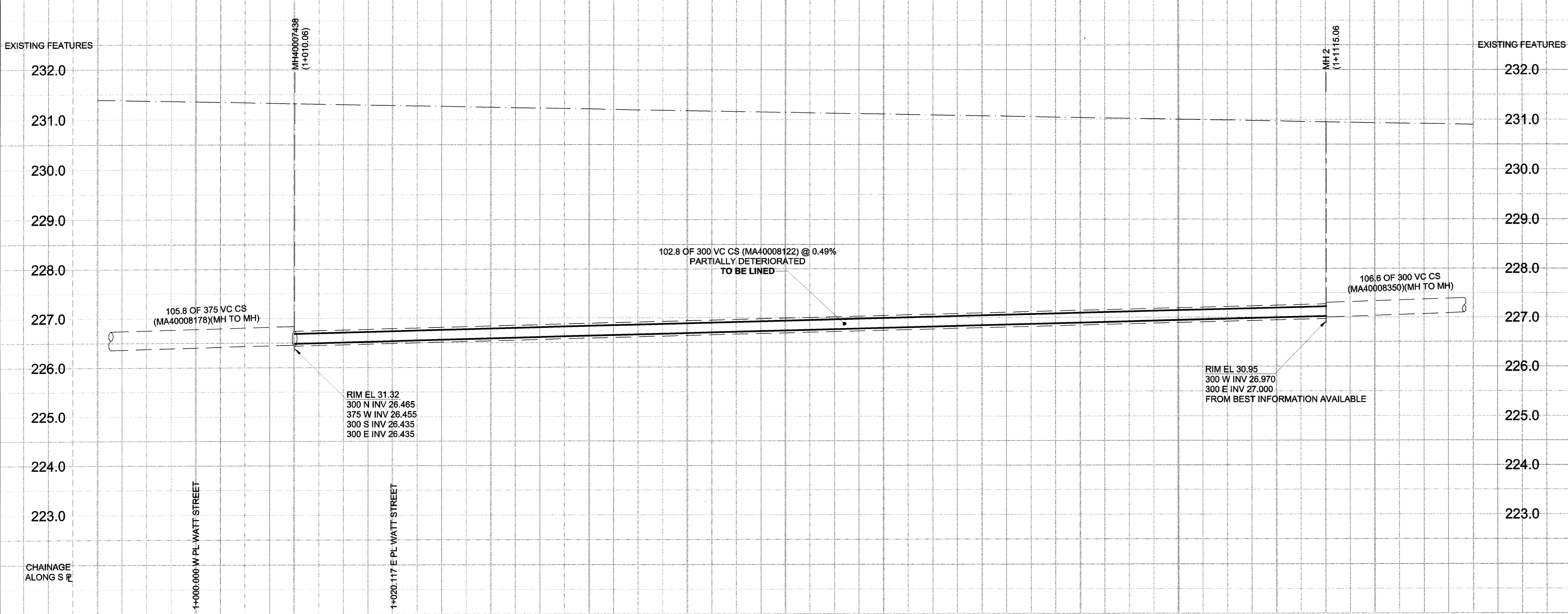


D SIZE 22" x 34" (599mm x 864mm) PLOT: 06/07/06 2:12:23 PM UMA FILE NAME: D265-207-01_01-C-1018 EX.dwg Saved By: kherard



SEWER JUNCTION INFORMATION*

REF. MH	DIST FROM REF. MH	SIZE	CLOCK AT
MH40007438	11.00	1500	01
MH40007438	12.90	1500	12
MH40007438	15.30	1500	10
MH40007438	33.20	1500	11
MH40007438	35.40	1500	01
MH40007438	48.30	1500	10
MH40007438	59.00	2000	11
MH40007438	59.60	2000	01
MH40007438	63.10	1500	11
MH40007438	65.60	1500	01
MH40007438	72.40	1500	12
MH40007438	78.60	1500	01
MH40007438	78.60	1500	11
MH40007438	84.40	1500	12
MH40007438	85.60	1500	02
MH40007438	93.40	1500	11
MH40007438	95.70	1500	02
MH40007438	99.10	1500	01
MH40007438	101.60	1500	11

* JUNCTION LOCATION FROM VIDEO INSPECTION
JUNCTIONS AT 12 OC DENOTED BY X

SEWER SERVICE INFORMATION

ADDRESS	PL	TIE	JUNCTION TIE	REMARKS
421 UNION AV				NO INFORMATION AVAILABLE
423 UNION AV				NO INFORMATION AVAILABLE
428 UNION AV				NO INFORMATION AVAILABLE
431 UNION AV				NO INFORMATION AVAILABLE
433 UNION AV				NO INFORMATION AVAILABLE
437 UNION AV				NO INFORMATION AVAILABLE
441 UNION AV				NO INFORMATION AVAILABLE

WARNING
 IF POWER EQUIPMENT OR EXPLOSIVES ARE TO BE USED FOR EXCAVATION ON THIS PROJECT, THE CONTRACTOR MUST:
 1) NOTIFY THE GAS COMPANY OF THE PROPOSED LOCATION OF EXCAVATION.
 2) TAKE PRECAUTION TO AVOID DAMAGE TO GAS COMPANY INSTALLATIONS.
 SEE PROVINCIAL REGULATION 140/92 FOR DETAILS

EXISTING	LEGEND - PLAN	NEW	EXISTING	LEGEND - PLAN	NEW	EXISTING	LEGEND - PROFILE	NEW
150 WM	WATERMAIN	150 WM	CURB STOP	REDUCER	150 WM	WATERMAIN	HYDRANT	150 WM
300 LDS	LAND DRAINAGE SEWER	300 LDS	COUPLING	ANODE	300 LDS	LAND DRAINAGE SEWER	VALVE	300 LDS
250 WWS	WASTE WATER SEWER	250 WWS	HYDRO	MTS	250 WWS	WASTE WATER SEWER	PAVEMENT CROWN	250 WWS
○	MANHOLE	●	GAS	TESTHOLE	○	N/W PROPERTY LINE	S/E PROPERTY LINE	○
□	CATCH BASIN	■	LAMP STANDARD	TREE	□	N/W GUTTER	S/E GUTTER	□
△	CURB INLET	▲			△			△
▭	CULVERT	▭			▭			▭
—	PIPE ABANDONMENTS	—			—			—
+	SURVEY BAR	+			+			+

LOCATION APPROVED UNDERGROUND STRUCTURES

SUPR. U/G STRUCTURES COMMITTEE DATE

NOTE:
 LOCATION OF UNDERGROUND STRUCTURES AS SHOWN ARE BASED ON THE BEST INFORMATION AVAILABLE. BUT NO GUARANTEE IS GIVEN THAT ALL EXISTING UTILITIES ARE SHOWN OR THAT THE GIVEN LOCATIONS ARE EXACT. CONFIRMATION OF EXISTENCE AND EXACT LOCATION OF ALL SERVICES MUST BE OBTAINED FROM THE INDIVIDUAL UTILITIES BEFORE PROCEEDING WITH CONSTRUCTION.

BM 27-031 N.W. Cor. Watt St. & Chalmers Ave., 7th. on top of 0.05m dia. x 2.4m iron pipe, beneath Valve Box
 ELEV 231.023m 2.5m E. of W.L. of Watt St. & on N.L. of Chalmers Ave.

UMA | AECOM

© 2006 UMA ENGINEERING LTD. ALL RIGHTS RESERVED.

DESIGNED BY MJR CHECKED BY A. Diani
 DRAWN BY KMB APPROVED BY [Signature]
 HOR. SCALE 1:250 RELEASED FOR CONSTRUCTION
 VERT. SCALE 1:50
 0 ISSUED FOR CONSTRUCTION 06/07/06 KMB
 NO. REVISIONS Y1MMDD BY DATE 06/07/06

APEGM
 Certificate of Authorization
 UMA Engineering Ltd.
 No. 256 Expiry: April 30, 2007

PROFESSIONAL'S SEAL
 PROVINCE OF MANITOBA
 07 July 2006
 C. C. MACEY
 REGISTERED ENGINEER
 CONSULTANT DRAWING NO. 28
 D265-207-01

THE CITY OF WINNIPEG
WATER AND WASTE DEPARTMENT

2006 COMBINED SEWER RENEWALS
BY CIPP LINING
CONTRACT 16
 UNION AVENUE W.
 4TH MH W OF GATEWAY ROAD
 TO MH AT WATT STREET

SHEET 28 OF 28
 CITY DRAWING NUMBER
05857
 REV 0

BID OPPORTUNITY NO. 273-2006