

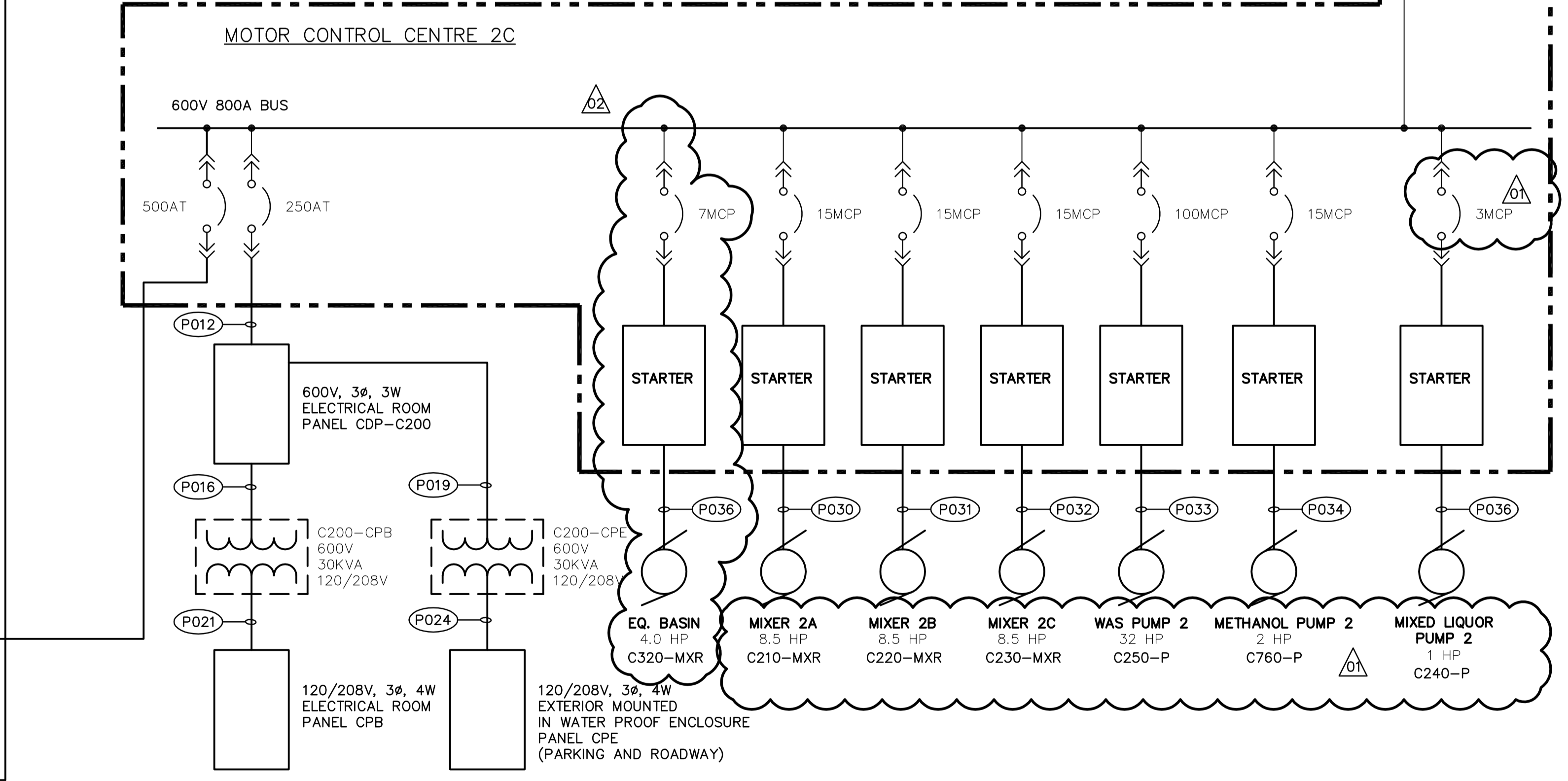
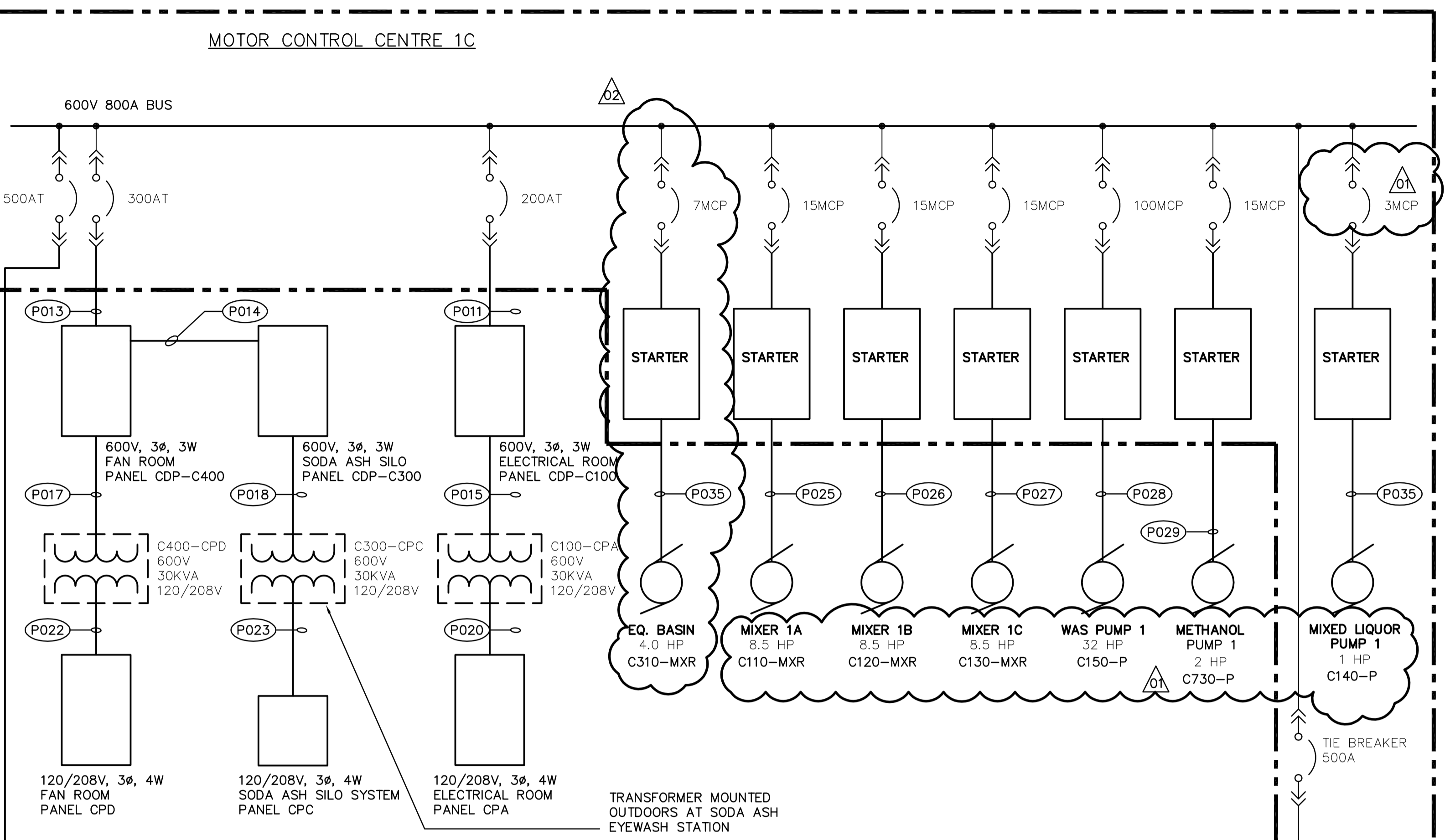
**SECONDARY ELECTRICAL ROOM**

CONN: 397KVA  
DEM: 344KVA  
CONN: 644KVA  
DEM: 598KVA  
LARGEST MOTOR 100 HP

PROVIDE REDUNDANT SUPPLY FEEDER FOR NITROGEN SYSTEM

DISCONNECTED OXYGEN PLANT FEED TO REMAIN COILED AND CONNECTED AS A REDUNDANT SUPPLY FEEDER

ROUTE FEEDER TO SWITCH PRE-TERMINATE FEEDER, CUT TO PROPPER LENGTH AND INSTALL LUGS ON THE FEEDER. COIL CABLE AND IDENTIFY AS "REDUNDANT PRIMARY FOR TRANSFORMER CT-2 NITROGEN REMOVAL SYSTEM". COORDINATE LOCATION ON SITE.



**SINGLE LINE DIAGRAM**  
SCALE: N.T.S.

**APECM**  
Certificate of Authorization  
Earth Tech Canada Inc.  
No. 730 Expiry: April 30, 2007

**EarthTech**  
A Tyco International Ltd. Company

DESIGNED BY	PS	CHECKED BY	GSN
DRAWN BY	CPG	APPROVED BY	JEH
SCALE:	N.T.S.		
RELEASED FOR CONSTRUCTION BY:	K. MARTENS		
NO. REVISIONS	DATE	BY	DATE
02	291-2006 ADDENDUM 4	06/07/19	ERC
01	291-2006 ADDENDUM 3	06/07/12	CPG
00	ISSUED FOR TENDER	06/05/15	CPG
DATE	2006/02/23	DATE	2006/05/23

ENGINEER'S SEAL  
ORIGINAL SIGNED BY  
P. STRYK  
2005/05/15

**THE CITY OF WINNIPEG**  
WATER AND WASTE DEPARTMENT  
ENGINEERING DIVISION

NEWPCC CENTRATE NUTRIENT TREATMENT  
NITROGEN REMOVAL FACILITY

ELECTRICAL  
SINGLE LINE DISTRIBUTION SCHEMATIC

CITY FILE NUMBER  
SHEET OF  
CITY DRAWING NUMBER

CONSULTANT DRAWING NO.  
E3.01