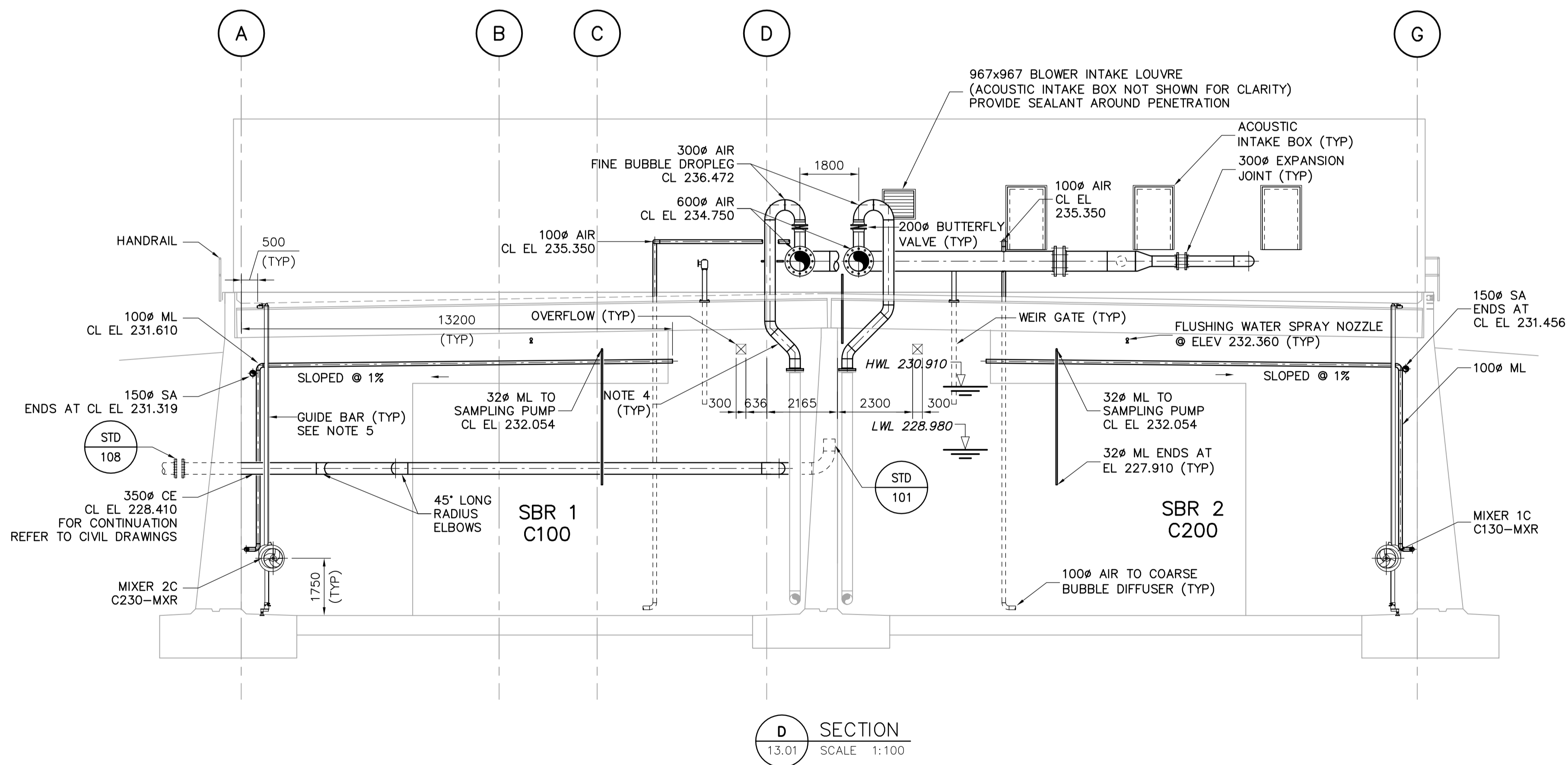


C SECTION
13.01 SCALE 1:100



D SECTION
13.01 SCALE 1:100

NOTES:

1. CONCRETE COLUMNS AND PEDESTALS OMITTED FOR CLARITY
2. ALL METAL PARTS BENEATH SBR COVERS USED FOR PIPE SUPPORT INCLUDING ANCHORS, RODS AND CLAMPS TO BE SS316. SUBMERGED METAL PARTS IN EQUALIZATION TANK USED FOR PIPE SUPPORT INCLUDING ANCHORS, RODS AND CLAMPS TO BE SS316.
3. DECANTERS SUPPLIED UNDER SEPARATE CONTRACT. INSTALL DECANTERS AS PART OF THIS CONTRACT. COORDINATE EXACT DIMENSIONS WITH DECANTER SUPPLIER.
4. PROVIDE SS316 300 AIR AND 100 AIR BELOW COVER.
5. PROVIDE INTERMEDIATE SUPPORT AS REQUIRED FOR GUIDE RAIL AND PIPE.

<p>Certificate of Authorization Earth Tech Canada Inc. No. 730 Expiry: April 30, 2007</p>	B.M. ELEV.	<p>A Tyco International Ltd. Company</p>	ENGINEER'S SEAL	<p>THE CITY OF WINNIPEG WATER AND WASTE DEPARTMENT ENGINEERING DIVISION</p>						
			DESIGNED BY: YL		ORIGINAL SIGNED BY: J.E. HUTCHISON					
			DRAWN BY: SRP		CHECKED BY: SB	2006/05/15				
			SCALE: AS NOTED		APPROVED BY: JEH	CONSULTANT DRAWING NO. P14.02				
	NO. REVISIONS	DATE	DATE	2006/01/16	DATE	2006/05/15	RELEASED FOR CONSTRUCTION BY: K. MARTENS	PROCESS SECTIONS SHEET 2	CITY FILE NUMBER	CITY DRAWING NUMBER
								NEWPC CENTRATE NUTRIENT TREATMENT NITROGEN REMOVAL FACILITY		1-0101C-A-P0003-002-02D