

### DOOR SCHEDULE

DOOR NO	DOOR										FRAME				HDW GROUP	FIRE RATING	GRILLES	COMMENTS
	TO ROOM	SIZE	SWING	TYPE	MAT	CORE	FINISH	COLOUR	PROFILE	MAT	TYPE	FINISH	COLOUR					
D101A	EXTERIOR	45x900x2150	RH	1	HM	INSUL	PT	A	1	HM	WLD	PT	A	1	N/A	N/A	TO EXT	
D101B	CONTROL ROOM	45x900x2150	LHR	1	HM	INSUL	PT	A	2	HM	WLD	PT	A	2	N/A	N/A	45 MIN RATING	
D103C	BLOWER ROOM	45x900x2150	LHR	1	HM	INSUL	PT	A	2	HM	WLD	PT	A	2	N/A	N/A	45 MIN RATING	
D103A	BLOWER ROOM	25x4880x3050	O/H	4	METAL	INSUL	PREFIN	A	N/A	N/A	N/A	N/A	B	N/A	N/A	N/A	COILING PACKAGE	
D103B	EXTERIOR	45x900x2150	RH	1	HM	INSUL	PT	A	1	HM	WLD	PT	A	1	N/A	N/A	TO EXT	
D104A	EXTERIOR	45x900x2150	RH	2	HM	INSUL	PT	A	1	HM	WLD	PT	A	1	N/A	N/A	TO EXT	
D104B	EXTERIOR	45x900x2150	LH														LHR ACTIVE/TO EXT	
D104C	ELECTRICAL ROOM	45x900x2150	LHR	1	HM	HC	PT	A	2	HM	WLD	PT	A	2	N/A	N/A		
D105A	EXHAUST ROOM	45x900x2150	RH	1	HM	INSUL	PT	A	1	HM	WLD	PT	A	1	N/A	N/A	TO EXT	
D105B		25x3050x3050	O/H	4	METAL	INSUL	PREFIN	A	N/A	N/A	N/A	N/A	B	N/A	N/A	N/A	COILING PACKAGE	

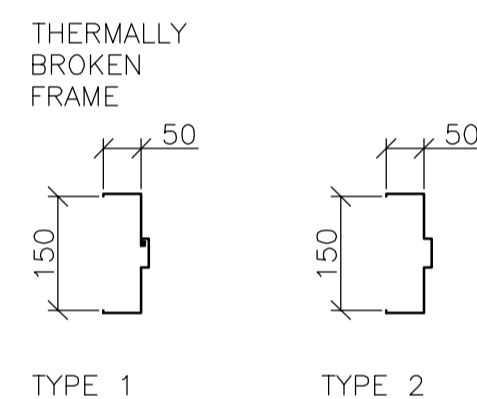
### FINISH SCHEDULE

ROOM NO	ROOM NAME	FLOOR				WALLS								CEILING			COMMENTS					
		FLOORING		BASE		NORTH		EAST		SOUTH		WEST		MATERIAL	FINISH	COLOUR		HGT AFF				
		MAT	COLOUR	MAT	COL	MAT	FINISH	COLOUR	MAT	FINISH	COLOUR	MAT	FINISH						COLOUR			
101	CONTROL ROOM	EPOXY	A	EPXY COV	B	CB	PT	C	CB	PT	C	CB	PT	C	CB	PT	C	CONC	PT	C	6000	
102	SAMPLING ROOM	EPOXY	A	EPXY COV	B	CB/CONC	PT	C	CB	PT	C	CB	PT	C	CB	PT	C	CONC	PT	C	6000	
103	BLOWER ROOM	EPOXY	A	EPXY COV	B	CB/CONC	PT	C	CB	PT	C	CB	PT	C	CB	PT	C	CONC	PT	C	6000	
104	ELECTRICAL ROOM	EPOXY	A	EPXY COV	B	CB/CONC	PT	C	CB	PT	C	CB	PT	C	CB	PT	C	CONC	PT	C	6000	
105	EXHAUST ROOM	EPOXY	A	EPXY COV	B	CB	PT	C	CB	PT	C	CB/CONC	PT	C	CB	PT	C	CONC	PT	C	4800	

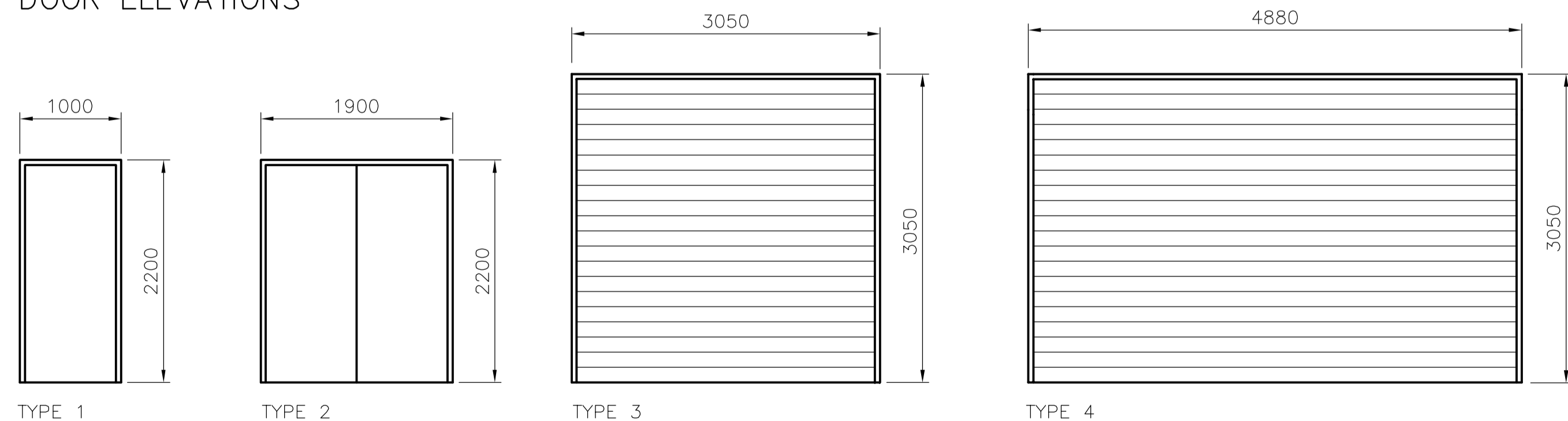
### HARDWARE GROUP SCHEDULE

<b>GROUP 1 D104A, D104B (DOUBLE DOOR)</b>			
6 BUTT HINGES	TA 314 115x100mm NRP	McKINNEY	26D
1 LOCKSET	AU5407 x ASA	YALE (W/CONST CYL)	26D
2 FLUSHBOLTS	F65	STANDARD METAL	26D
2 WEATHERSTRIP	W29 1/6 + 2/7	KN CROWDER	CA
2 DOOR SWEEP	W245 - 900 & 600mm	KN CROWDER	CA
1 THRESHOLD	CT11 - 1800	KN CROWDER	CA
1 ASTRAGAL	W40P - 2100	KN CROWDER	CA
1 KICK PLATE	K10C	SSTEEL	
<b>GROUP 2 D101A, D103B, D105A</b>			
3 BUTT HINGES	TA 314 115x100mm NRP	McKINNEY	26D
1 WEATHERSTRIP	W29 1/3 + 2/7	KN CROWDER	CA
1 DOOR SWEEP	W245 - 900mm	KN CROWDER	CA
1 THRESHOLD	CT11 - 900mm	KN CROWDER	CA
1 CLOSER	4040	LCN	689
1 WALL STOP	S123	STANDARD METAL	26D
1 KICK PLATE	K10C	SSTEEL	
<b>GROUP 3 D104C</b>			
3 BUTT HINGES	TA 314 115x100mm NRP	McKINNEY	26D
1 LOCKSET	AU5402 x ASA	YALE (W/CONST CYLINDER)	26D
1 WALL STOP	S122	STANDARD METAL	26D
1 CLOSER	1461	LCN	689
1 KICK PLATE	K10C	SSTEEL	
<b>GROUP 4 D101B, D103C (RATED)</b>			
3 BUTT HINGES	TA 314 115x100mm NRP	McKINNEY	26D
1 LOCKSET	AU5402 x ASA	YALE (W/CONST CYLINDER)	26D
1 WALL STOP	S122	STANDARD METAL	26D
1 CLOSER	1461	LCN	689
1 KICK PLATE	K10C	SSTEEL	
1 ACOUSTIC WEATHERSTRIP	W29 1/3 + 2/7	KN CROWDER	CA
1 DOOR SWEEP	W245 - 900mm	KN CROWDER	CA
1 THRESHOLD	CT11 - 900mm	LCN	689

### DOOR FRAME PROFILE



### DOOR ELEVATIONS



### CODE ANALYSIS

**North End Water Pollution Control Centre**  
2230 Main Street  
Winnipeg, Manitoba  
R2V 4T8

**New Centrate Nutrient Treatment - Nitrogen Removal Facility**  
Exhaust Fan Building  
Building Code Analysis

#### 1.0 Description

- ◆ Building Area: 120 m2 (1291.20 sf)
- ◆ Stories: One (1)
- ◆ Sprinklered: No
- ◆ Occupancy Type: Group F, Division 3
- ◆ Occupant Load: Two (2) (Intermittent)
- ◆ Streets: Three (3)

#### 2.0 Regulation

- .1 This project may be regulated under 3.2.2.80., Group F, Division 3, One (1) Storey

#### .2 Classification

- .1 Requirements:
  - ◆ 8,400 m2 (90,384 sf) Building Area (Conforms)
  - ◆ One (1) Storey (Conforms)
  - ◆ Unsprinklered (Conforms)
  - ◆ Type "F-3" Occupancy (Conforms)
  - ◆ Three (3) Streets (Conforms)

#### .2 Stipulations:

- ◆ May be of Heavy Timber or Non-combustible construction
- ◆ Floor Assemblies - No requirements.
- ◆ Load bearing Elements - No requirements.

#### 3.0 General Conformance

##### .1 3.4.2.5 - Travel Distance

- .1 Maximum travel distance to an exit is 30 m (98') - Conforms (maximum travel of 13m - 42.65').

##### .2 3.4.2.1 - Number of Exits

- .1 One (1) exit as required (Conforms)

##### .3 3.2.3.1 - Limiting Distance

- .1 No issues

**North End Winnipeg Pollution Control Centre**  
2230 Main Street  
Winnipeg, Manitoba  
R2V 4T8

**New Centrate Nutrient Treatment - Nitrogen Removal Facility**  
Blower Building  
Building Code Analysis

#### 1.0 Description

- ◆ Building Area: 249 m2 (2,679.24 sf)
- ◆ Stories: One (1)
- ◆ Sprinklered: No
- ◆ Occupancy Type: Group F, Division 3
- ◆ Occupant Load: Two (2) (Intermittent)
- ◆ Streets: Three (3)

#### 2.0 Regulation

- .1 This project may be regulated under 3.2.2.80., Group F, Division 3, One (1) Storey

#### .2 Classification

- .1 Requirements:
  - ◆ 8,400 m2 (90,384 sf) Building Area; (Conforms)
  - ◆ One (1) Storey; (Conforms)
  - ◆ Unsprinklered; (Conforms)
  - ◆ Type "F-3" Occupancy; (Conforms)
  - ◆ Three (3) Streets (Conforms)

#### .2 Stipulations:

- ◆ May be of Heavy Timber or Non-combustible construction
- ◆ Floor Assemblies - No requirements.
- ◆ Load bearing Elements - No requirements.

#### 3.0 General Conformance

##### .1 3.4.2.5 - Travel Distance

- .1 Maximum travel distance to an exit is 30 m (98') - Conforms (maximum travel of 24.2m - 79.39').

##### .2 3.4.2.1 - Number of Exits

- .1 Two (2) exits as required (Conforms)

##### .3 3.2.3.1 - Limiting Distance

- .1 No issues



B.M. ELEV. NO. REVISIONS DATE BY	 A Tyco International Ltd. Company	ENGINEER'S SEAL  ORIGINAL SIGNED BY N. COOPER  2006/05/15	 THE CITY OF WINNIPEG WATER AND WASTE DEPARTMENT ENGINEERING DIVISION  NEWPCC CENTRATE NUTRIENT TREATMENT NITROGEN REMOVAL FACILITY  ARCHITECTURAL CODE ANALYSIS AND SCHEDULES
00 ISSUED FOR TENDER 06/05/15 AL	DESIGNED BY: NC CHECKED BY: LK  DRAWN BY: AL APPROVED BY: JEH  HOR. SCALE: AS NOTED VERTICAL SCALE: K. MARTENS	CONSULTANT DRAWING NO. A1.03	CITY FILE NUMBER SHEET OF CITY DRAWING NUMBER