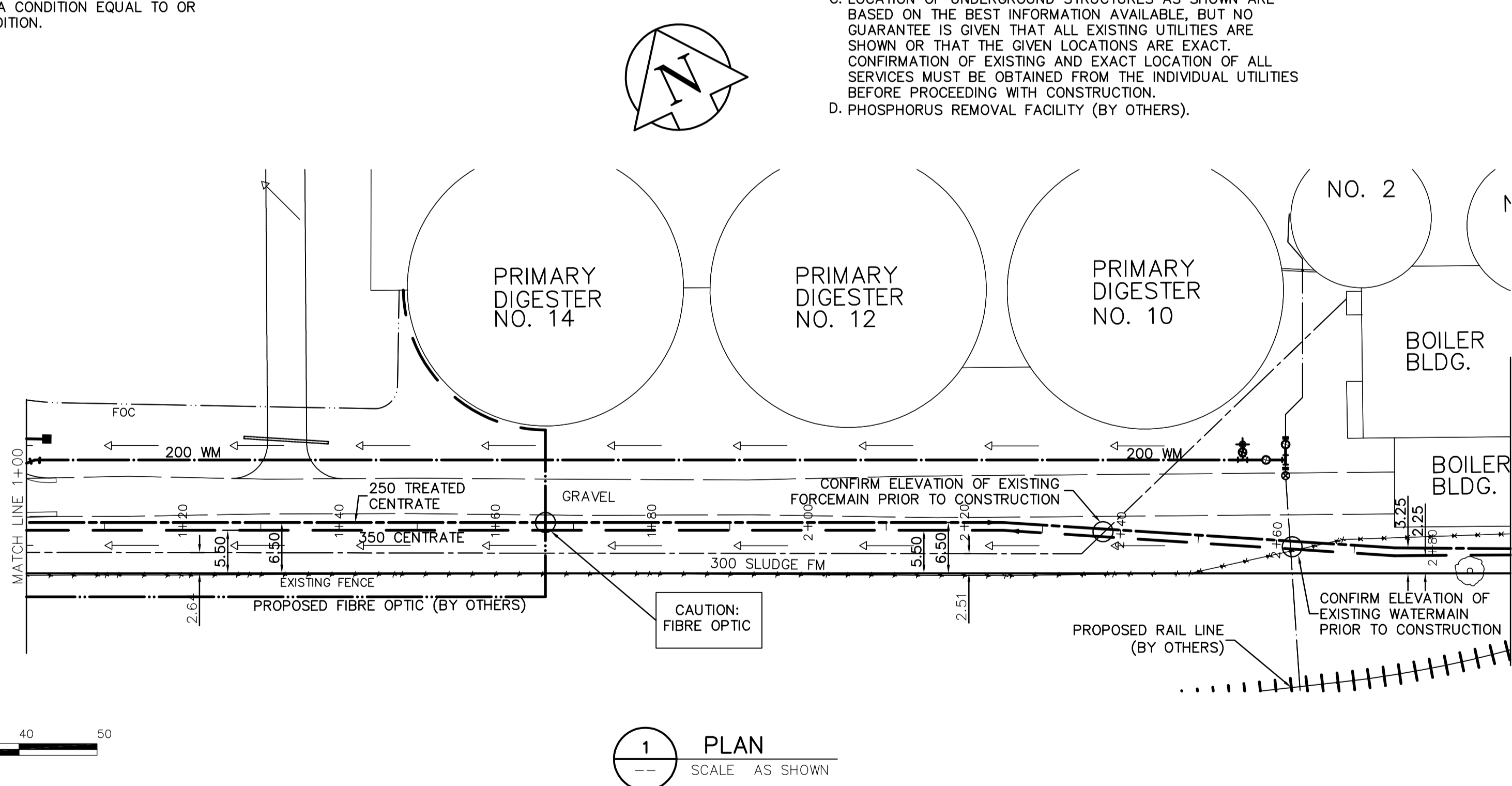
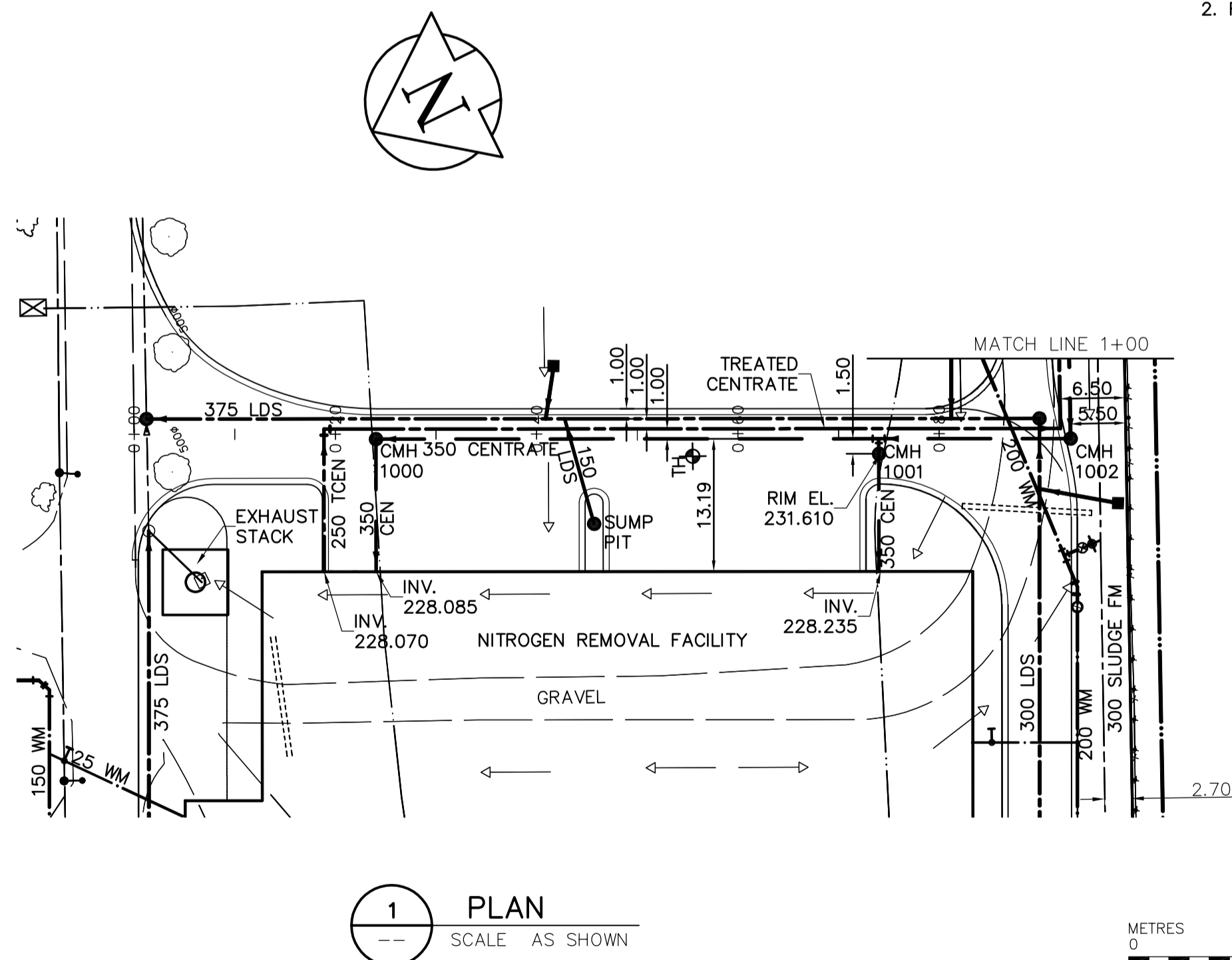


CONSTRUCTION NOTES

- ALL WORK AND MATERIALS SHALL CONFORM TO THE CITY OF WINNIPEG STANDARD CONSTRUCTION SPECIFICATIONS.
- RESTORE ALL SURFACES TO A CONDITION EQUAL TO OR BETTER THAN ORIGINAL CONDITION.

GENERAL NOTES:

- BASELINE MEASURED DOWN CENTERLINE OF CENTRATE/TREATED CENTRATE TRENCH.
- EARTH TECH FIELD BOOK No. 4401
- LOCATION OF UNDERGROUND STRUCTURES AS SHOWN ARE BASED ON THE BEST INFORMATION AVAILABLE, BUT NO GUARANTEE IS GIVEN THAT ALL EXISTING UTILITIES ARE SHOWN OR THAT THE GIVEN LOCATIONS ARE EXACT. CONFIRMATION OF EXISTING AND EXACT LOCATION OF ALL SERVICES MUST BE OBTAINED FROM THE INDIVIDUAL UTILITIES BEFORE PROCEEDING WITH CONSTRUCTION.
- PHOSPHORUS REMOVAL FACILITY (BY OTHERS).



150 mm W.M.	WATERMAIN	150 mm W.M.	HYDRO	HYDRO	LIGHT STANDARD
◇	HYDRANT	+	M.T.S.	○	BOLLARD
⊙	VALVE	○	CONCRETE	■	FIRE EXTINGUISHER
300mm L.D.S.	LAND DRAINAGE SEWER	300mm L.D.S.	ASPHALT	—	CURB STOP
250mm W.W.S.	WASTEWATER SEWER	250mm W.W.S.	PROPERTY LINE	—	TREATED CENTRATE
○	MANHOLE	●	TEST HOLES		@ RAILWAY TRACK
□	CATCH BASIN	232.750	ELEVATION	←	DITCH
▽	CURB INLET	300mm	TREE	—	RAS
+	JUNCTIONS	—	ANODE	—	WAS
—	CULVERT	—	CONCRETE SIDEWALK	—	FW
—	GAS	—	FENCE	—	CENTRATE
---	EXISTING	---	LEGEND - PLAN	---	PROPOSED

APEGM
Certificate of Authorization
Earth Tech Canada Inc.
No. 730 Expiry: April 30, 2007

13-027 W. side Main St. on the grounds of the North End B.M. Treatment Plant, Tbl. on top of Conc. pit in front of main ELEV. bldg., 22.3m E. of line of most Ely. wall & 32.8m S. of most Nly. wall of main bldg. (ties to 101.) ELEV. = 231.261m
00 ISSUED FOR TENDER 06/05/15 FC
NO. REVISIONS DATE BY
2006/01/16 DATE
2006/05/15 DATE

EarthTech
A Tyco International Ltd. Company

DESIGNED BY: GSK	CHECKED BY: KWF
DRAWN BY: FC	APPROVED BY: JEH
SCALE: HOR: 1:500 VERT: 1:50	RELEASED FOR CONSTRUCTION BY: K. MARTENS

ENGINEER'S SEAL
ORIGINAL SIGNED BY: K.W. FITCHETT
2006/05/15
CONSULTANT DRAWING NO. C4.01

THE CITY OF WINNIPEG
WATER AND WASTE DEPARTMENT
ENGINEERING DIVISION

NEWPC CENTRATE NUTRIENT TREATMENT NITROGEN REMOVAL FACILITY

CIVIL
CENTRATE FEED LINE AND TREATED CENTRATE RETURN LINE-PLAN AND PROFILE-SHEET 1

CITY FILE NUMBER
SHEET OF
CITY DRAWING NUMBER