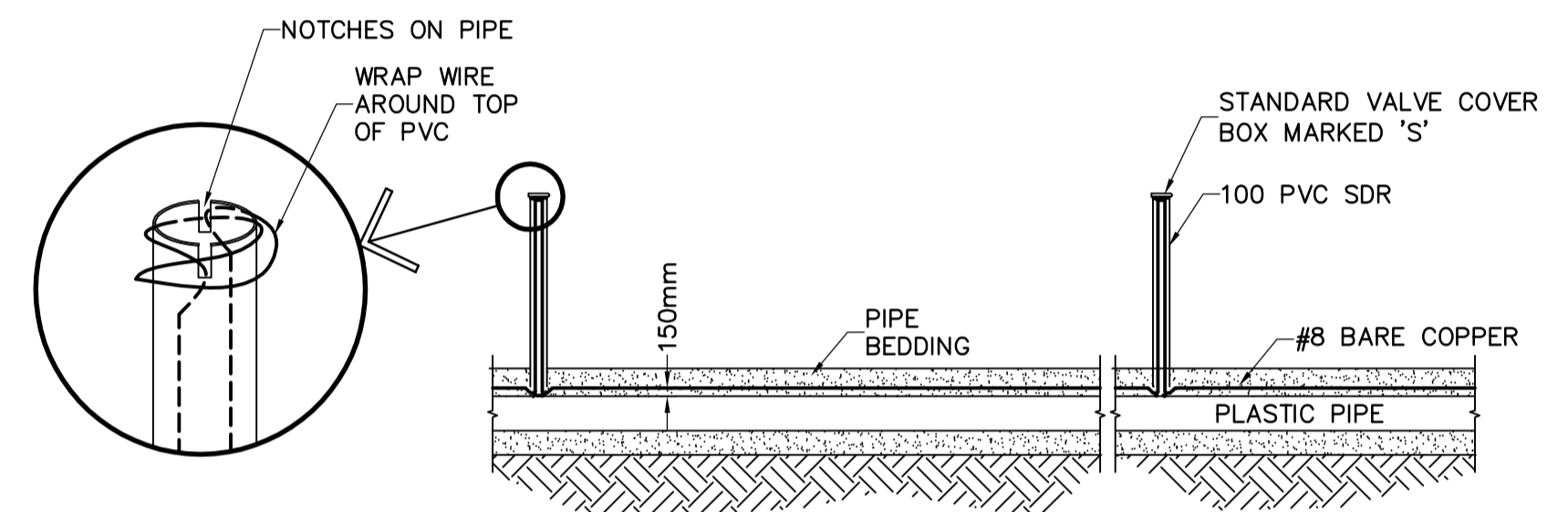
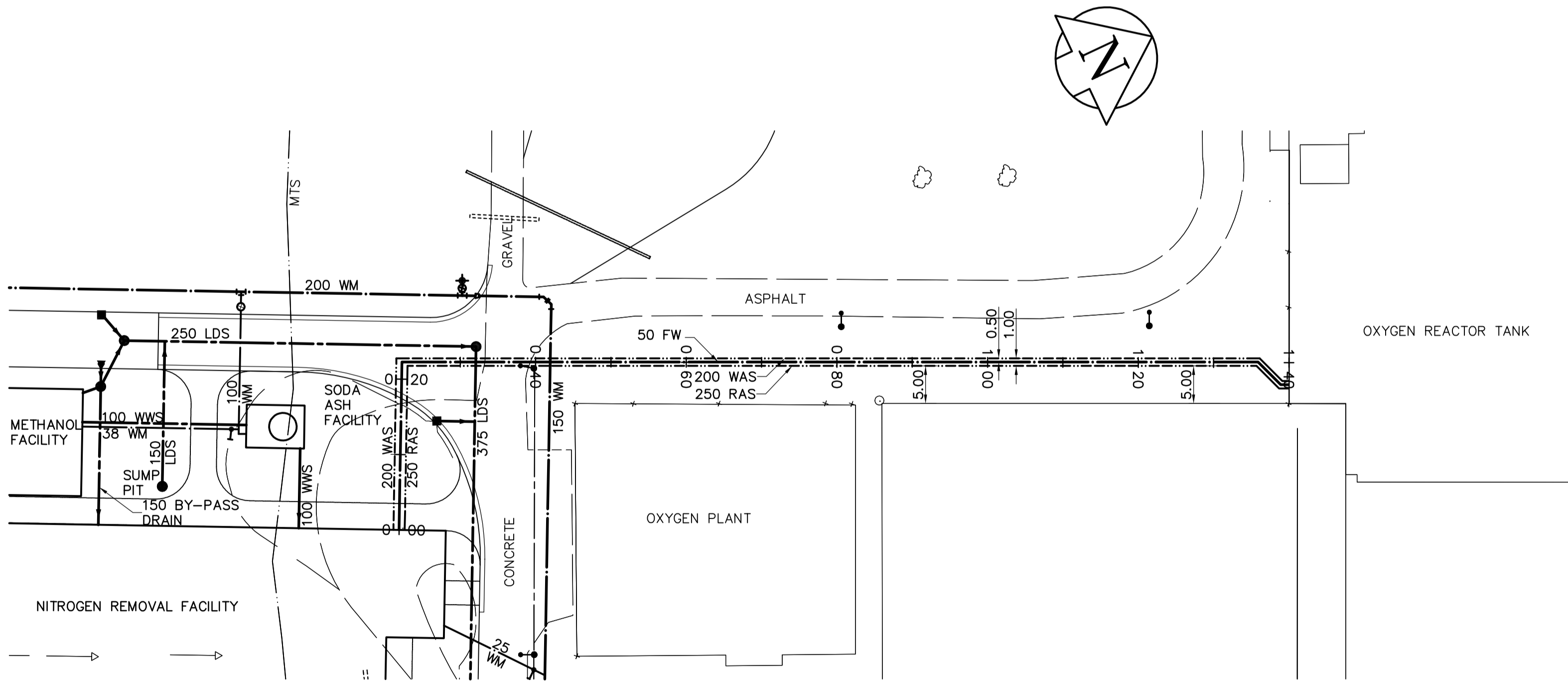


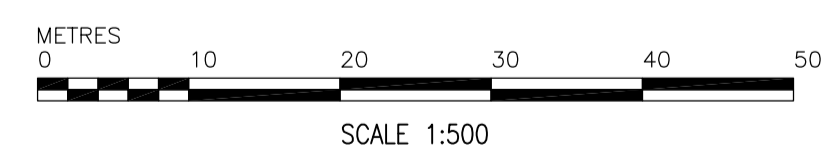
1 PROFILE  
SCALE AS SHOWN



1 TRACER WIRE DETAIL  
SCALE NTS



1 PLAN  
SCALE AS SHOWN



- CONSTRUCTION NOTES
1. ALL WORK AND MATERIALS SHALL CONFORM TO THE CITY OF WINNIPEG STANDARD CONSTRUCTION SPECIFICATIONS.
  2. RESTORE ALL SURFACES TO A CONDITION EQUAL TO OR BETTER THAN ORIGINAL CONDITION.
  3. 250 RAS - PVC SERIES 160
  4. 200 WAS - PVC SERIES 160
  5. 50 FW - HDPE SERIES DR11 IPS

- GENERAL NOTES:
- A. BASELINE MEASURED DOWN CENTERLINE OF TRENCH.
  - B. EARTH TECH FIELD BOOK No. 4401
  - C. LOCATION OF UNDERGROUND STRUCTURES AS SHOWN ARE BASED ON THE BEST INFORMATION AVAILABLE, BUT NO GUARANTEE IS GIVEN THAT ALL EXISTING UTILITIES ARE SHOWN OR THAT THE GIVEN LOCATIONS ARE EXACT. CONFIRMATION OF EXISTENCE AND EXACT LOCATION OF ALL SERVICES MUST BE OBTAINED FROM THE INDIVIDUAL UTILITIES BEFORE PROCEEDING WITH CONSTRUCTION.

150 mm W.M.	WATERMAIN	150 mm W.M.	HYDRO	M.T.S.	LIGHT STANDARD
300mm L.D.S.	LAND DRAINAGE SEWER	300mm L.D.S.	CONCRETE	ASPHALT	PROPERTY LINE
250mm W.W.S.	WASTEWATER SEWER	250mm W.W.S.	TEST HOLES	ELEVATION (32.750)	TREE
	MANHOLE		ANODE	CONCRETE SIDEWALK	FENCE
	CATCH BASIN				
	CURB INLET				
	JUNCTIONS				
	CULVERT				
	GAS				
EXISTING	LEGEND - PLAN	PROPOSED	EXISTING	LEGEND - PLAN	PROPOSED

**APEGM**

Certificate of Authorization  
Earth Tech Canada Inc.  
No. 730 Expiry: April 30, 2007

13-027 W. side Main St. on the grounds of the North End Treatment Plant, Tbl. on top of Conc. pit in front of main ELEV. bldg., 22.3m E. of line of most Ely. wall & 32.8m S. of most Nly. wall of main bldg. (ties to 101.) ELEV = 231.261m			
DESIGNED BY	GSK	CHECKED BY	KWF
DRAWN BY	FC	APPROVED BY	JEH
SCALE:	HOR: 1:500 VERT: 1:50	RELEASED FOR CONSTRUCTION BY:	K. MARTENS
00 ISSUED FOR TENDER	06/05/15	FC	
NO. REVISIONS	DATE	BY	DATE
	2006/01/16		2006/05/15

**EarthTech**  
A Tyco International Ltd. Company

ENGINEER'S SEAL	
ORIGINAL SIGNED BY	K.W. FITCHETT
	2006/05/15
CONSULTANT DRAWING NO.	C5.01

**THE CITY OF WINNIPEG**  
WATER AND WASTE DEPARTMENT  
ENGINEERING DIVISION

NEWPCC CENTRATE NUTRIENT TREATMENT  
NITROGEN REMOVAL FACILITY

CIVIL  
RAS, WAS AND FLUSHING WATER PLAN AND PROFILE

CITY FILE NUMBER	
SHEET	OF
CITY DRAWING NUMBER	