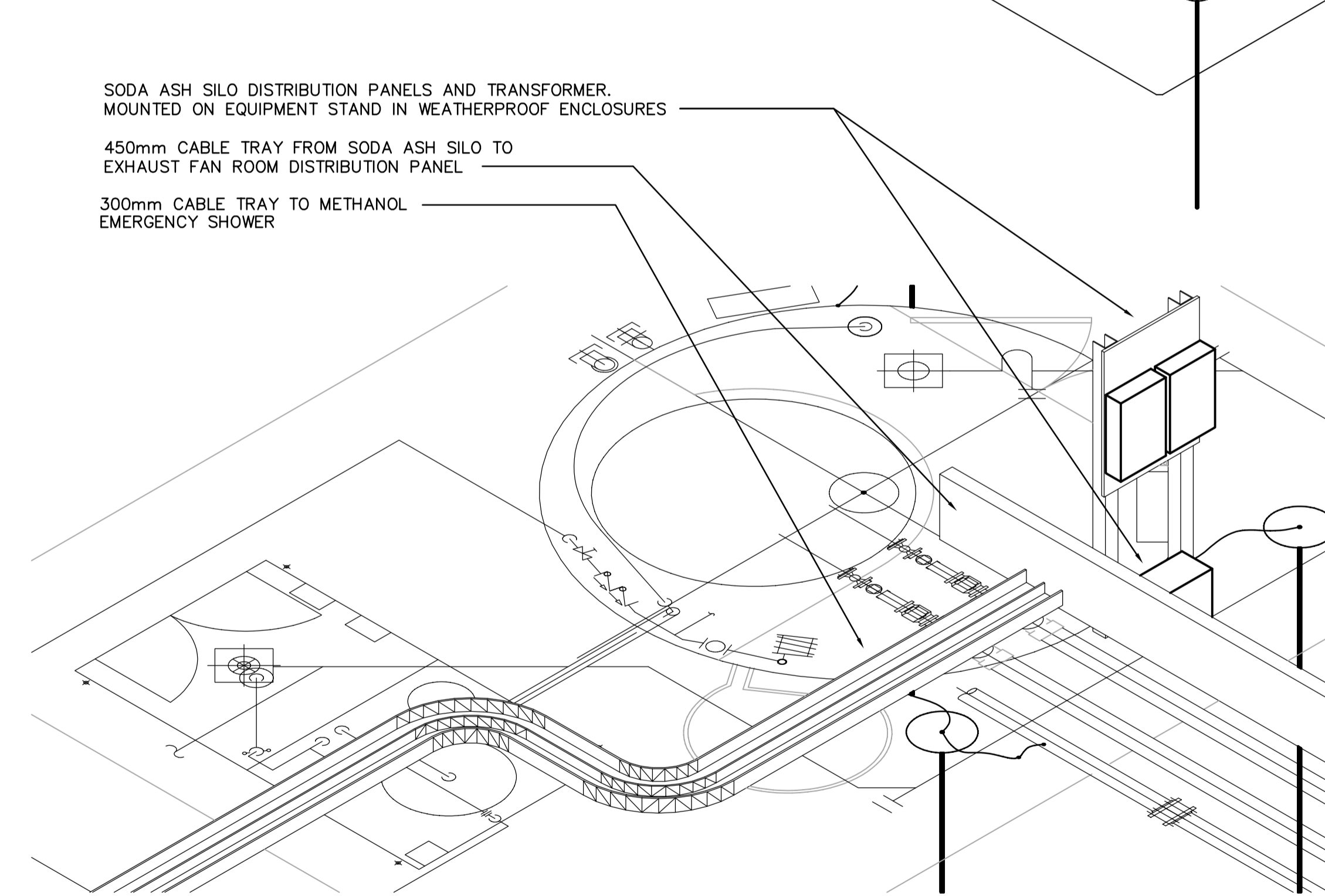
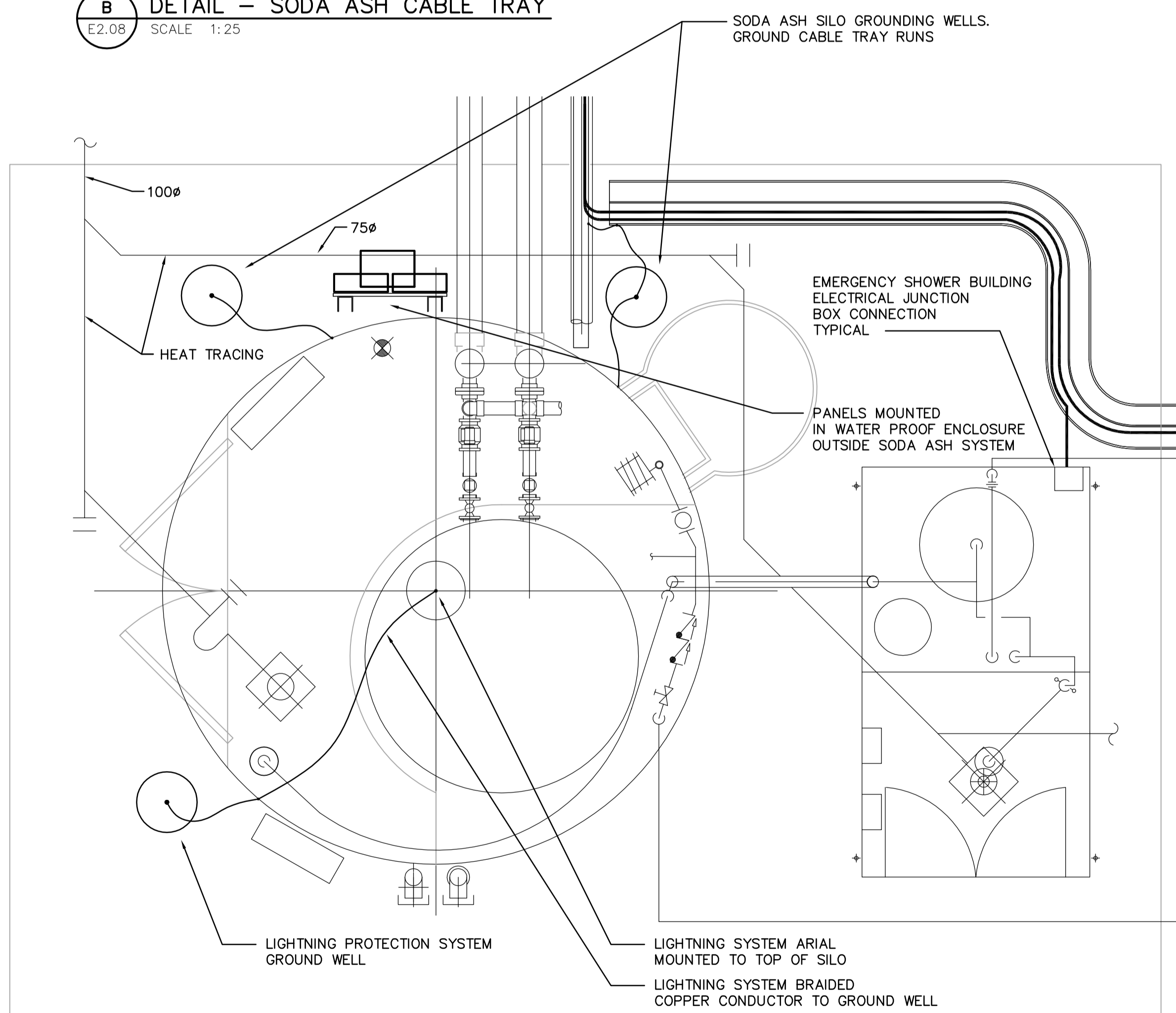


B DETAIL - SODA ASH CABLE TRAY
E2.08 SCALE 1:25

D DETAIL - METHANOL GROUNDING
E2.08 SCALE 1:50



C DETAIL - SODA ASH CABLE TRAY
E2.08 SCALE 1:25

E DETAIL - METHANOL TRUCK GROUNDING
E2.08 SCALE N.T.S.

A DETAIL - SODA ASH PLAN
E2.08 SCALE 1:25

APECA
Certificate of Authorization
Earth Tech Canada Inc.
No. 730 Expiry: April 30, 2007

B.M. ELEV.	EarthTech A Tyco International Ltd. Company		ENGINEER'S SEAL	THE CITY OF WINNIPEG WATER AND WASTE DEPARTMENT ENGINEERING DIVISION	
	DESIGNED BY PS	CHECKED BY GSN	ORIGINAL SIGNED BY P. STRYK	NEWPCC CENTRATE NUTRIENT TREATMENT NITROGEN REMOVAL FACILITY	
	DRAWN BY CPG	APPROVED BY JEH	2005/05/15	CITY FILE NUMBER	
	SCALE:		CONSULTANT DRAWING NO. E2.08	SHEET OF	
00 ISSUED FOR TENDER	06/05/15	CPG		CITY DRAWING NUMBER	
NO. REVISIONS	DATE	BY	DATE 2006/04/28	ELECTRICAL EYEWASH, SODA ASH AND METHANOL GROUNDING	
			DATE 2006/05/23		