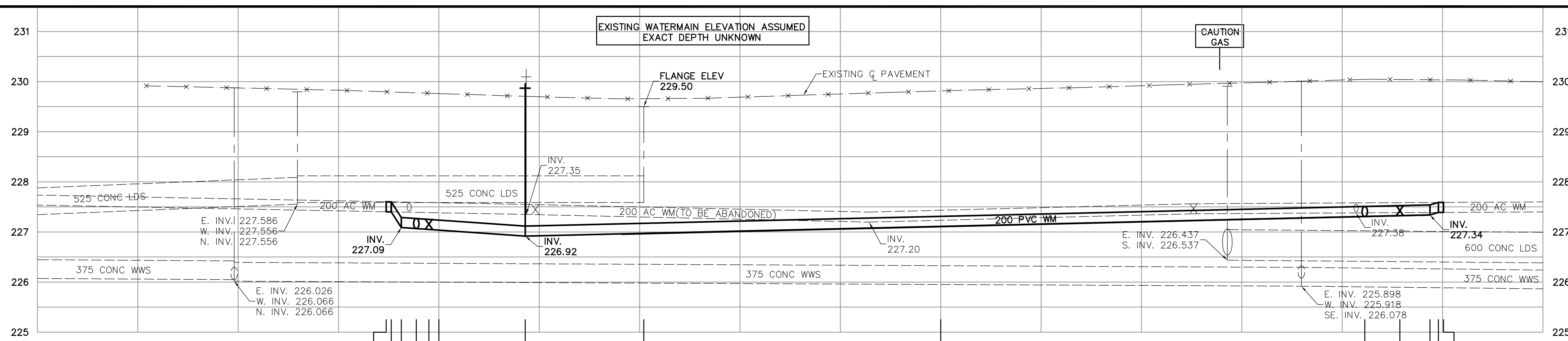
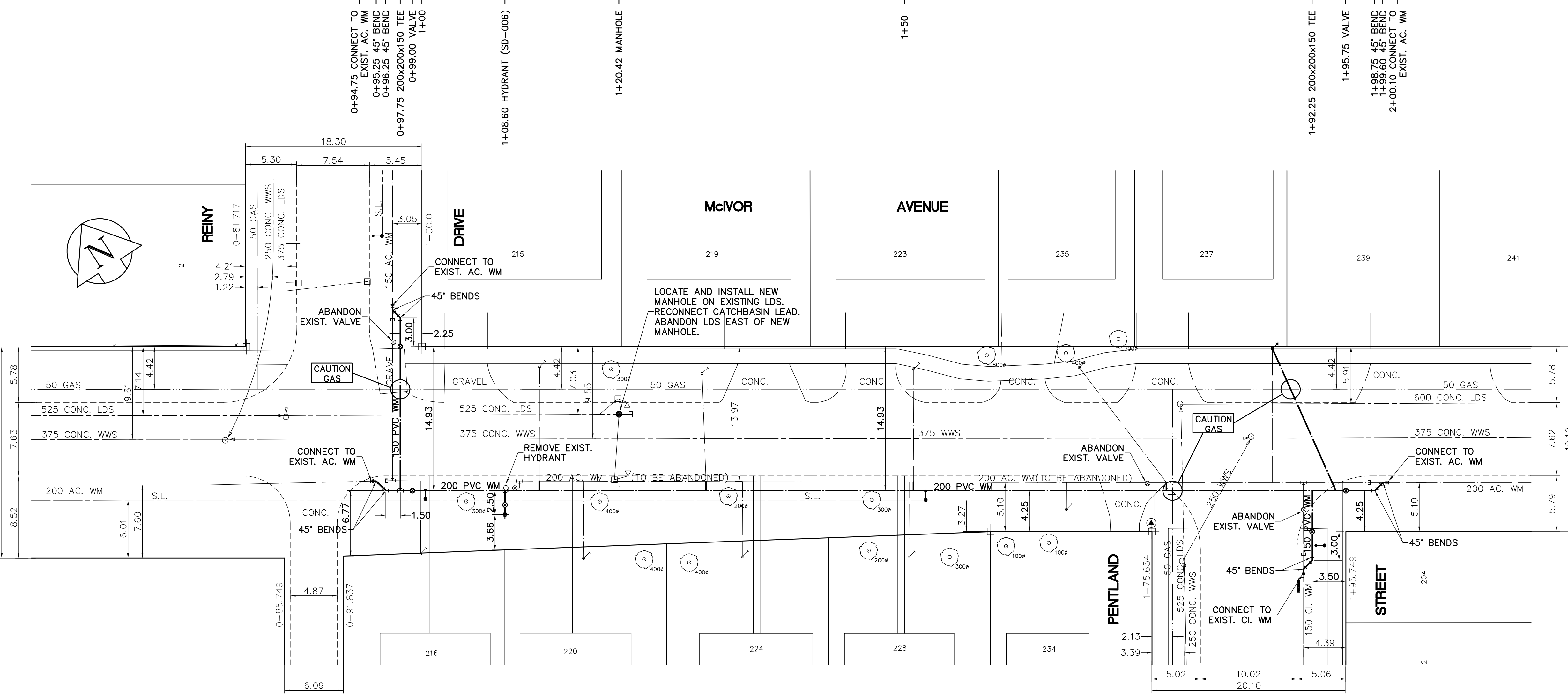


SHEET: COW-WM-A1 (11/2002) FILE NAME: L:\Work\10000\92736\02a-CAD\Wm\Wm\A1\92736-C02.dwg LAYOUT NAME: 92736-C02 May 08, 2006 - 11:30am PLOTTED BY: michael.horvath



- CONSTRUCTION NOTES**
1. EXPOSE WATERMAIN CONNECTIONS AND CONFIRM INVERTS PRIOR TO CONSTRUCTION.
 2. INSTALL WATERMAIN BY TRENCHLESS METHODS.
 3. ALL MATERIALS SHALL CONFORM TO THE CITY OF WINNIPEG STANDARD CONSTRUCTION SPECIFICATIONS.
 4. MINIMUM COVER TO TOP OF PROPOSED WATERMAIN SHALL BE 2.5m FROM STREET CENTERLINE.
 5. INSTALL ALL HYDRANTS WITH FLANGE ELEVATION 50mm - 150mm ABOVE FINISHED GRADE.
 6. REPLACE ALL EXISTING LEAD SERVICES FROM THE PROPOSED WATERMAIN TO PROPERTY LINE.
 7. NOTIFY ALL AFFECTED RESIDENTS AND BUSINESSES 24 HOURS IN ADVANCE OF ANY WATER SHUTDOWN OR DISRUPTION OF SERVICE.
 8. LOCATION OF WATER SERVICES SHOWN ON DRAWINGS ARE APPROXIMATE. THE CONTRACTOR SHALL FIELD LOCATE ALL WATER SERVICES PRIOR TO CONSTRUCTION.
 9. ALL VALVES SHALL BE BLACK TOP (CLOCKWISE TO CLOSE).
 10. BACKFILL UNDER OR WITHIN 1.0m OF PAVEMENTS, INCLUDING SIDEWALKS SHALL BE CLASS 3 BACKFILL EXCEPT AS NOTED. BACKFILL IN BOULEVARDS SHALL BE CLASS 5 BACKFILL.



ADDRESS	NATURE OF SERVICE	SIZE	MATERIAL	DISTANCE SC TO PROPERTY	POSITION OF SC (curb stop)	POSITION OF CC (corp)	COMMENTS:
239 McIVOR AV	RESIDENTIAL	19 mm	COPPER	0.3 m	Long: 5.5 m E of WL BLDG Short: of of	Long: 23.8 m W of HYDRANT Short: of of	RENEW TO PL
237 McIVOR AV	RESIDENTIAL	19 mm	COPPER	0.2 m	Long: OPP of EL BLDG Short: of of	Long: of of Short: of of	
235 McIVOR AV	RESIDENTIAL	19 mm	COPPER	2.2 m	Long: 3.4 m E of WL BLDG Short: of of	Long: 1.5 m E of WL PENTLAND Short: of of	
234 McIVOR AV	RESIDENTIAL	19 mm	COPPER	2.3 m	Long: 2.4 m W of EL BLDG Short: of of	Long: OPP of S/C Short: of of	
228 McIVOR AV	RESIDENTIAL	19 mm	COPPER	-2.3 m	Long: 4.7 m W of EL BLDG Short: of of	Long: of of Short: of of	
224 McIVOR AV	RESIDENTIAL	19 mm	COPPER	-1.6 m	Long: 4.3 m E of WL BLDG Short: of of	Long: of of Short: of of	
223 McIVOR AV	RESIDENTIAL	19 mm	COPPER	2.3 m	Long: 8.2 m E of WL BLDG Short: of of	Long: of of Short: of of	DEC/03 RENEWED SERVICE BOX AND SERVICE

ADDRESS	NATURE OF SERVICE	SIZE	MATERIAL	DISTANCE SC TO PROPERTY	POSITION OF SC (curb stop)	POSITION OF CC (corp)	COMMENTS:
220 McIVOR AV	RESIDENTIAL	19 mm	COPPER	-1.2 m	Long: 6.7 m E of WL BLDG Short: of of	Long: of of Short: of of	
219 McIVOR AV	RESIDENTIAL	19 mm	COPPER	2.8 m	Long: 5.9 m E of WL BLDG Short: of of	Long: 6.2 m E of WL BLDG Short: of of	
216 McIVOR AV	RESIDENTIAL	19 mm	COPPER	0.0 m	Long: 3.8 m E of WL BLDG Short: of of	Long: of of Short: of of	
215 McIVOR AV	RESIDENTIAL	19 mm	COPPER	2.1 m	Long: 9.8 m E of WL BLDG Short: of of	Long: of of Short: of of	CPLG 13 OR OUT FROM S/C ON CITY SIDE-DEC/03 RENEWED SERVICE BOX
2 REINY DR	RESIDENTIAL	19 mm	COPPER	0.3 m	Long: 2.7 m S of NL BLDG Short: of of	Long: of of Short: of of	
204 PENTLAND ST	RESIDENTIAL	19 mm	COPPER	0.3 m	Long: of of Short: of of	Long: of of Short: of of	

APEGM
Certificate of Authorization
Earth Tech Canada Inc.
No. 730 Expiry: April 30, 2007

METRIC
WHOLE NUMBERS INDICATE MILLIMETRES
DECIMALIZED NUMBERS INDICATE METRES

EXISTING	LEGEND - PLAN	PROPOSED	EXISTING	LEGEND - PROFILE	PROPOSED
	WATERMAIN			WATERMAIN	
	HYDRANT VALVE			HYDRANT VALVE	
	LAND DRAINAGE SEWER			LAND DRAINAGE SEWER	
	WASTEWATER SEWER			WASTE WATER SEWER	
	MANHOLE			MANHOLE	
	CATCH BASIN			CATCH BASIN	
	CURB INLET			CURB INLET	
	JUNCTIONS			JUNCTIONS	
	CULVERT			CULVERT	
	GAS			GAS	
	HYDRO TELEPHONE			HYDRO TELEPHONE	
	CONCRETE			CONCRETE	
	ASPHALT			ASPHALT	
	PROPERTY LINE			PROPERTY LINE	
	SURVEY BAR			SURVEY BAR	
	CURB STOP			CURB STOP	
	TREE			TREE	
	ANODE			ANODE	
	CONCRETE SIDEWALK			CONCRETE SIDEWALK	
	FENCE			FENCE	

LOCATION APPROVED UNDERGROUND STRUCTURES

SUPV. U/G STRUCTURES COMMITTEE DATE _____

NOTE:
LOCATION OF UNDERGROUND STRUCTURES AS SHOWN ARE BASED ON THE BEST INFORMATION AVAILABLE. BUT NO GUARANTEE IS GIVEN THAT ALL EXISTING UTILITIES ARE SHOWN OR THAT THE GIVEN LOCATIONS ARE EXACT. CONFIRMATION OF EXISTENCE AND EXACT LOCATION OF ALL SERVICES MUST BE OBTAINED FROM THE INDIVIDUAL UTILITIES BEFORE PROCEEDING WITH CONSTRUCTION.

NO.	REVISIONS	DATE	BY
B	ISSUED FOR TENDER	08/05/2006	GSK
A	ISSUED FOR REVIEW	02/05/2006	GSK

EARTH TECH
A tyco INTERNATIONAL LTD. COMPANY
Earth Tech (Canada) Inc. Winnipeg, Manitoba 204.477.5381

DESIGNED BY: GDL, GSK
DRAWN BY: MAF

CHECKED BY: GSK
APPROVED BY: [Signature]

HOR. SCALE: 1:250
VERTICAL SCALE: 1:50

RELEASED FOR CONSTRUCTION BY: K. ZUREK

DATE: 2006/04/12
DATE: 2006/05/08

ENGINEER'S SEAL
PROVINCE OF MANITOBA
ORIGINAL SIGNED BY
K.W. FITCHETT
REGISTERED PROFESSIONAL ENGINEER
08/05/2006

THE CITY OF WINNIPEG
Winnipeg WATER AND WASTE DEPARTMENT

2006 WATERMAIN RENEWALS CONTRACT 1

2006 WATERMAIN RENEWALS CONTRACT 1

MCIVOR AVENUE
REINY DRIVE
TO PENTLAND STREET

SHEET OF 3 9
CITY DRAWING NUMBER D-8985

CONSULTANT DRAWING NO. 92736-C02