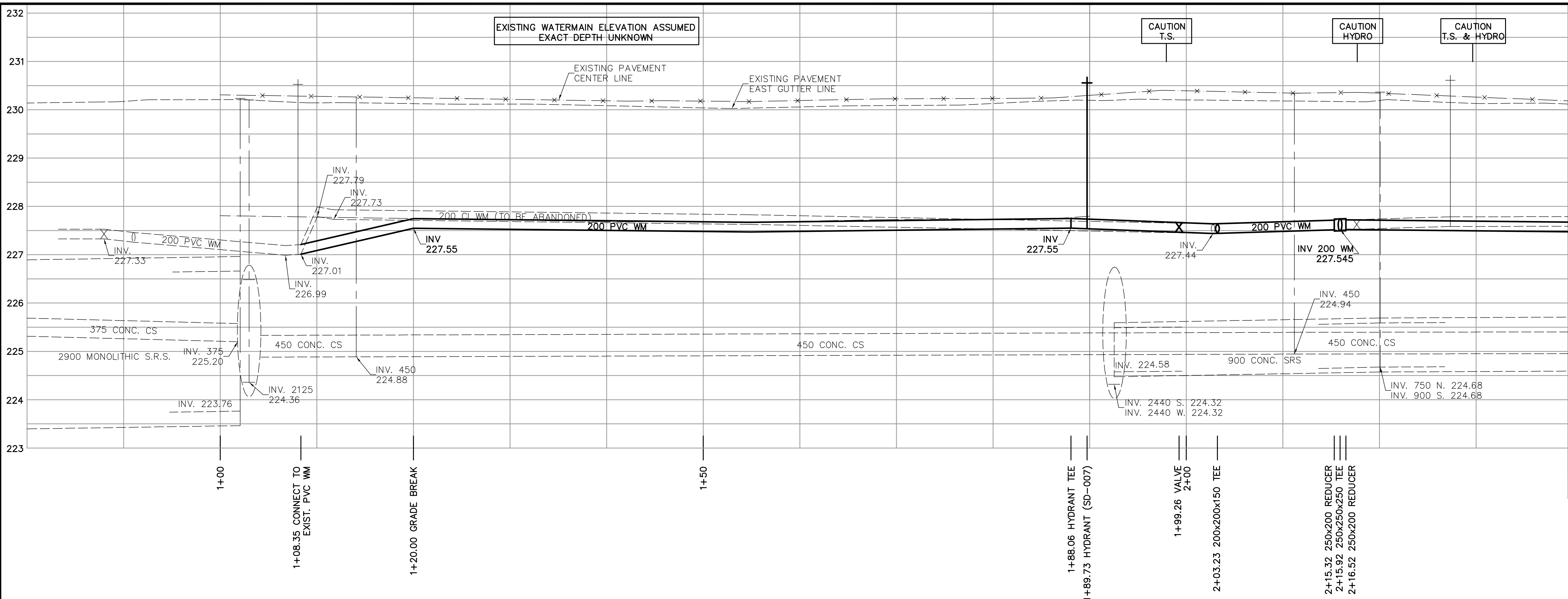
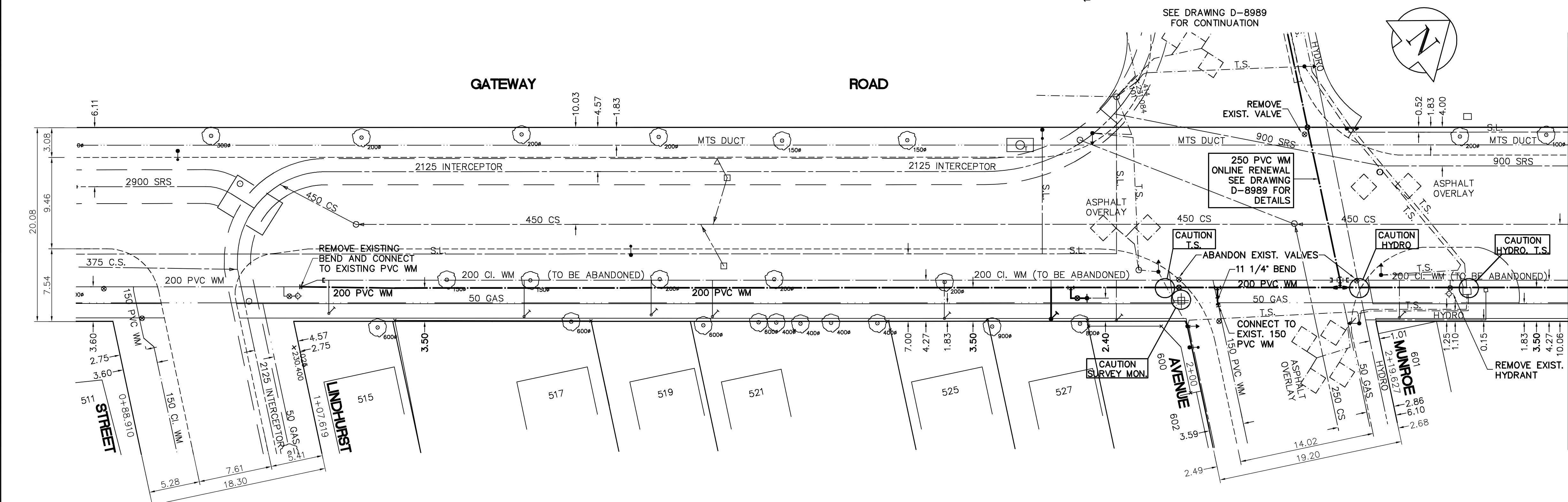


SHEET: GWM-WM-A1 (1/2006) FILE NAME: L:\work\10000\W2736\03-00\Wm\Wm\W2736-004.dwg LAYOUT NAME: 92736-C04 MAY 08, 2006 - 11:40am PLOTTED BY: michael.hendricks



- CONSTRUCTION NOTES**
1. EXPOSE WATERMAIN CONNECTIONS AND CONFIRM INVERTS PRIOR TO CONSTRUCTION.
  2. INSTALL WATERMAIN BY TRENCHLESS METHODS.
  3. ALL MATERIALS SHALL CONFORM TO THE CITY OF WINNIPEG STANDARD CONSTRUCTION SPECIFICATIONS.
  4. MINIMUM COVER TO TOP OF PROPOSED WATERMAIN SHALL BE 2.5m FROM STREET CENTERLINE.
  5. INSTALL ALL HYDRANTS WITH FLANGE ELEVATION 50mm- 150mm ABOVE FINISHED GRADE.
  6. REPLACE ALL EXISTING LEAD SERVICES FROM THE PROPOSED WATERMAIN TO PROPERTY LINE.
  7. NOTIFY ALL AFFECTED RESIDENTS AND BUSINESSES 24 HOURS IN ADVANCE OF ANY WATER SHUTDOWN OR DISRUPTION OF SERVICE.
  8. LOCATION OF WATER SERVICES SHOWN ON DRAWINGS ARE APPROXIMATE. THE CONTRACTOR SHALL FIELD LOCATE ALL WATER SERVICES PRIOR TO CONSTRUCTION.
  9. ALL VALVES SHALL BE RED TOP (COUNTER CLOCKWISE TO CLOSE).
  10. BACKFILL UNDER MUNROE AVENUE PAVEMENT SHALL BE CLASS 1. BACKFILL UNDER OR WITHIN 1.0m OF OTHER PAVEMENTS INCLUDING SIDEWALKS SHALL BE CLASS 3. BACKFILL IN BOULEVARDS SHALL BE CLASS 5.



**APEGM**  
Certificate of Authorization  
Earth Tech Canada Inc.  
No. 730 Expiry: April 30, 2007

**METRIC**  
WHOLE NUMBERS INDICATE MILLIMETRES  
DECIMALIZED NUMBERS INDICATE METRES

ADDRESS	NATURE OF SERVICE	SIZE	MATERIAL	DISTANCE SC TO PROPERTY	POSITION OF SC (curb stop)	POSITION OF CC (corp)	COMMENTS:
527 GATEWAY RD	RESIDENTIAL	13 mm	LEAD	0.3 m	Long: 2.9 m S of NL BLDG Short: 2.9 m S of NL BLDG	Long: 13.4 m S of GATE VALVE Short: 13.4 m S of GATE VALVE	RENEW TO PL
525 GATEWAY RD	RESIDENTIAL	19 mm	COPPER	0.3 m	Long: 4.8 m N of SL BLDG Short: 4.8 m N of SL BLDG	Long: 44.8 m S of HYDRANT Short: 44.8 m S of HYDRANT	
521 GATEWAY RD	RESIDENTIAL	19 mm	COPPER	0.5 m	Long: 0.5 m N of SL BLDG Short: 0.5 m N of SL BLDG	Long: 43.2 m N of HYDRANT Short: 43.2 m N of HYDRANT	
519 GATEWAY RD	RESIDENTIAL	19 mm	COPPER	0.7 m	Long: 3.0 m S of NL BLDG Short: 3.0 m S of NL BLDG		SEPT03 - RENEWED SERVICE BOX

ADDRESS	NATURE OF SERVICE	SIZE	MATERIAL	DISTANCE SC TO PROPERTY	POSITION OF SC (curb stop)	POSITION OF CC (corp)	COMMENTS:
517 GATEWAY RD	RESIDENTIAL	19 mm	COPPER	0.3 m	Long: 2.1 m N of SL BLDG Short: 2.1 m N of SL BLDG	Long: 2.7 m N of 1ST HYD N Short: 2.7 m N of 1ST HYD N	LINDHURST
515 GATEWAY RD	RESIDENTIAL	19 mm	COPPER	0.3 m	Long: 1.8 m N of SL BLDG Short: 1.8 m N of SL BLDG	Long: 2.7 m N of 1ST HYD N Short: 2.7 m N of 1ST HYD N	
600 MUNROE AV	RESIDENTIAL	19 mm	COPPER	0.4 m	Long: 2.1 m N of SL BLDG Short: 2.1 m N of SL BLDG	Long: 2.1 m N of SL BLDG Short: 2.1 m N of SL BLDG	
601 MUNROE AV	RESIDENTIAL	19 mm	COPPER	0.4 m	Long: 2.5 m N of SL BLDG Short: 2.5 m N of SL BLDG	Long: 2.5 m N of SL BLDG Short: 2.5 m N of SL BLDG	

EXISTING	LEGEND - PLAN	PROPOSED	EXISTING	LEGEND - PLAN	PROPOSED	EXISTING	LEGEND - PROFILE	PROPOSED
150 mm W.M.	WATERMAIN	150 mm W.M.	HYDRO	TELEPHONE	150 mm W.M.	WATERMAIN	HYDRANT	
300mm L.D.S.	LAND DRAINAGE SEWER	300mm L.D.S.	CONCRETE	CONCRETE	300mm L.D.S.	LAND DRAINAGE SEWER	VALVE	
250mm W.W.S.	WASTEWATER SEWER	250mm W.W.S.	ASPHALT	PROPERTY LINE	250mm W.W.S.	WASTE WATER SEWER	Q PROFILE	
	MANHOLE		SURVEY BAR					
	CATCH BASIN		CURB STOP					
	CURB INLET		TREE					
	JUNCTIONS		ANODE					
	CULVERT		CONCRETE SIDEWALK					
	GAS		FENCE					

**LOCATION APPROVED UNDERGROUND STRUCTURES**

SUPV. U/G STRUCTURES COMMITTEE DATE \_\_\_\_\_

**NOTE:**  
LOCATION OF UNDERGROUND STRUCTURES AS SHOWN ARE BASED ON THE BEST INFORMATION AVAILABLE. BUT NO GUARANTEE IS GIVEN THAT ALL EXISTING UTILITIES ARE SHOWN OR THAT THE GIVEN LOCATIONS ARE EXACT. CONFIRMATION OF EXISTENCE AND EXACT LOCATION OF ALL SERVICES MUST BE OBTAINED FROM THE INDIVIDUAL UTILITIES BEFORE PROCEEDING WITH CONSTRUCTION.

B.M. 27-015 N.W. Cor. Raleigh St. and Neil Ave., 10ft. on top of 0.02m dia. x 2.4m iron pipe, 4m N. of S. wall of No. 615/621 Gateway Rd. and 33m W. of W. rail of railway tracks on C.P.R. Loc. 10, Signal Subst. R.O.W.  
ELEV. 230.527

**EARTH TECH**  
A tyco INTERNATIONAL LTD. COMPANY  
Earth Tech (Canada) Inc. Winnipeg, Manitoba 204.477.5381

DESIGNED BY: GDL, GSK  
CHECKED BY: GSK

DRAWN BY: MAF  
APPROVED BY: [Signature]

HOR. SCALE: 1:250  
VERTICAL SCALE: 1:50

RELEASED FOR CONSTRUCTION BY: K. ZUREK

NO. REVISIONS: [Table with 3 columns: NO., DATE, BY]

DATE: 2006/04/12  
DATE: 2006/05/08

ENGINEER'S SEAL  
PROVINCE OF MANITOBA  
ORIGINAL SIGNED BY: K.W. FITCHETT  
08/05/2006  
REGISTERED PROFESSIONAL ENGINEER

CONSULTANT DRAWING NO. 92736-C04

**THE CITY OF WINNIPEG**  
Winnipeg WATER AND WASTE DEPARTMENT

**2006 WATERMAIN RENEWALS CONTRACT 1**

GATEWAY ROAD  
LINDHURST AVE. TO GOVERNMENT AVE.  
LINDHURST AVE. TO STA. 2+40

SHEET 5 OF 9  
CITY DRAWING NUMBER D-8987