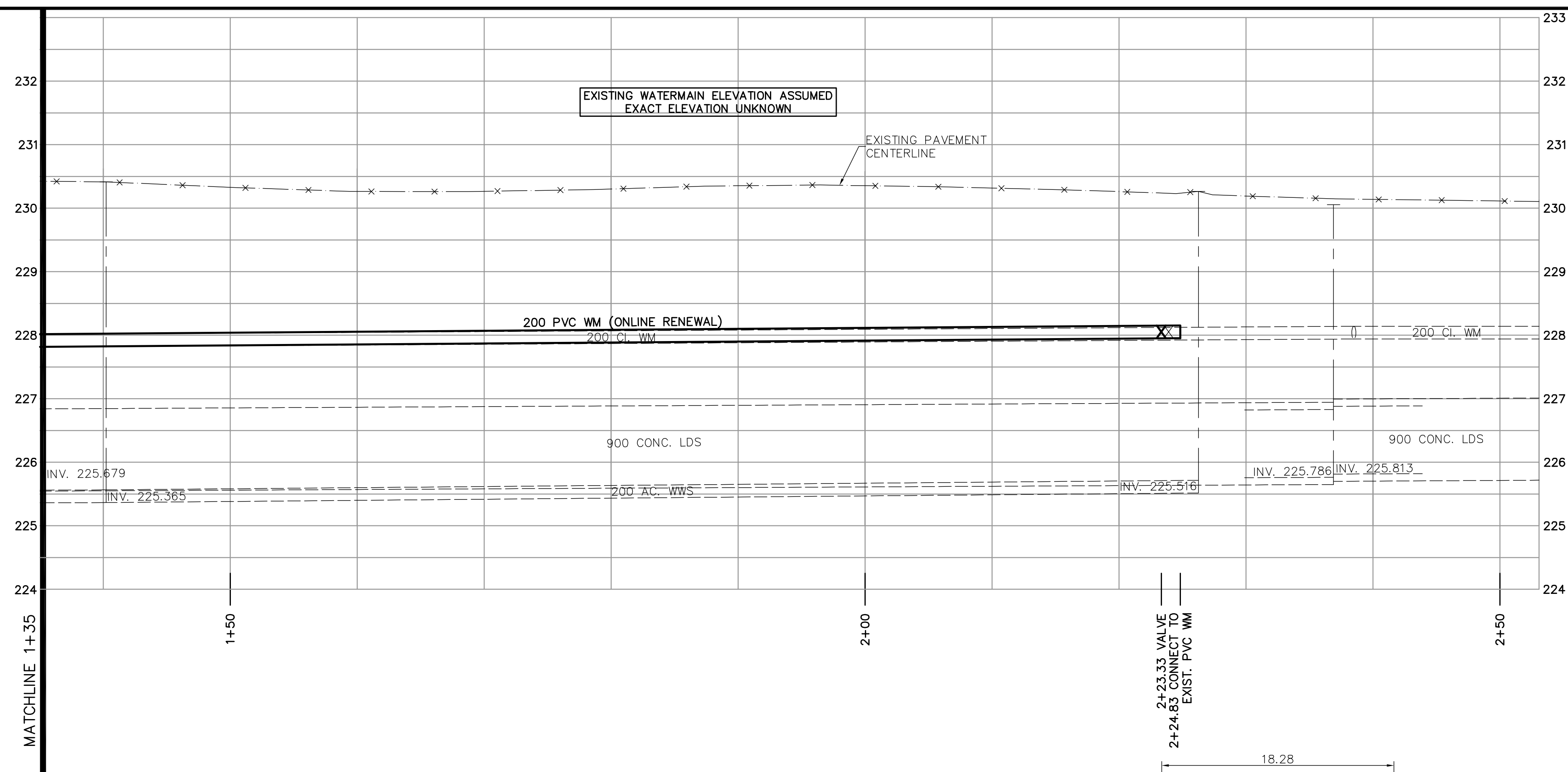
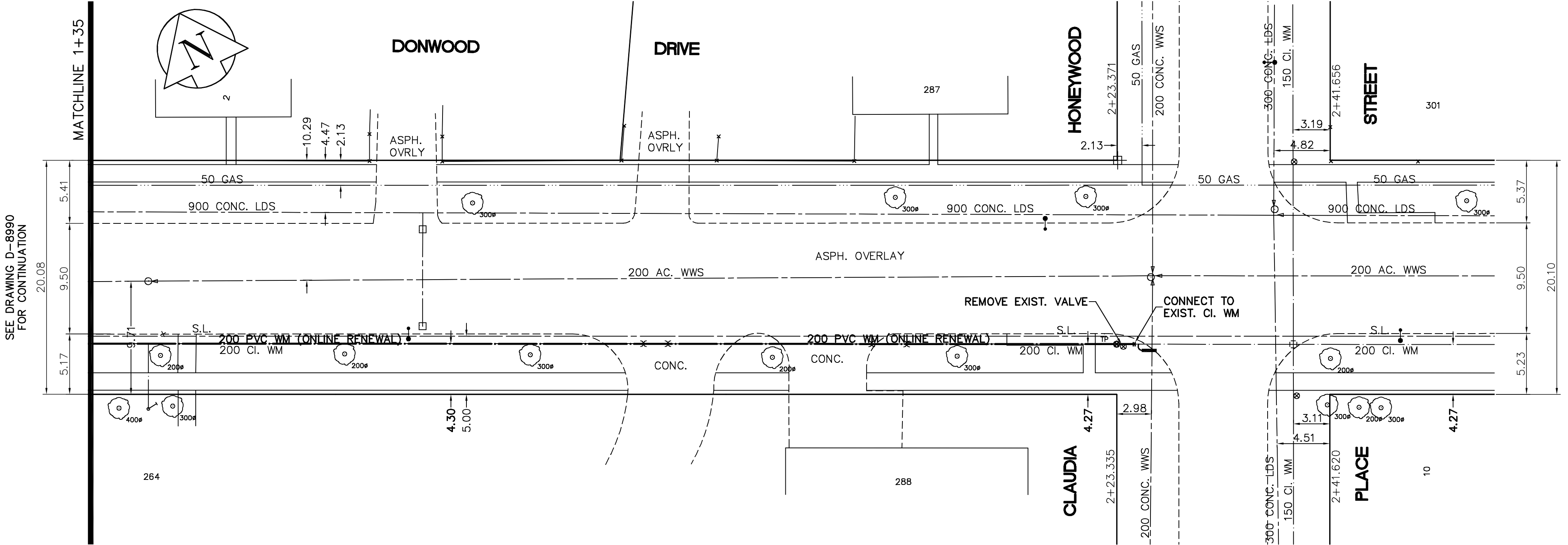


SHEET: COW-WM-A1 (11/2002) FILE NAME: L:\Work\10000\102736\102736-CAD\Plan\102736-C08.dwg LAYOUT NAME: 92736-C08 May 08, 2006 - 11:43am PLOTTED BY: michael.hendricks

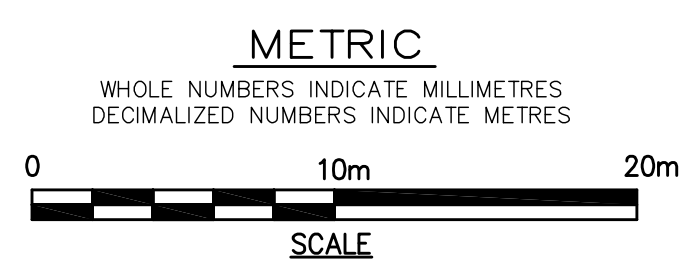


- CONSTRUCTION NOTES**
1. EXPOSE WATERMAIN CONNECTIONS AND CONFIRM INVERTS PRIOR TO CONSTRUCTION.
 2. INSTALL WATERMAIN BY TRENCHLESS METHODS.
 3. ALL MATERIALS SHALL CONFORM TO THE CITY OF WINNIPEG STANDARD CONSTRUCTION SPECIFICATIONS.
 4. MINIMUM COVER TO TOP OF PROPOSED WATERMAIN SHALL BE 2.5m FROM STREET CENTERLINE.
 5. INSTALL ALL HYDRANTS WITH FLANGE ELEVATION 50mm - 150mm ABOVE FINISHED GRADE.
 6. REPLACE ALL EXISTING LEAD SERVICES FROM THE PROPOSED WATERMAIN TO PROPERTY LINE.
 7. NOTIFY ALL AFFECTED RESIDENTS AND BUSINESSES 24 HOURS IN ADVANCE OF ANY WATER SHUTDOWN OR DISRUPTION OF SERVICE.
 8. LOCATION OF WATER SERVICES SHOWN ON DRAWINGS ARE APPROXIMATE. THE CONTRACTOR SHALL FIELD LOCATE ALL WATER SERVICES PRIOR TO CONSTRUCTION.
 9. ALL VALVES SHALL BE BLACK TOP (CLOCKWISE TO CLOSE).
 10. BACKFILL UNDER OR WITHIN 1.0m OF PAVEMENTS, INCLUDING SIDEWALKS SHALL BE CLASS 3 BACKFILL EXCEPT AS NOTED. BACKFILL IN BOULEVARDS SHALL BE CLASS 5 BACKFILL.



SEE DRAWING D-8990 FOR CONTINUATION

ADDRESS	NATURE OF SERVICE	SIZE	MATERIAL	DISTANCE SC TO PROPERTY	POSITION OF SC (curb stop)			POSITION OF CC (corp)			COMMENTS:	
					Long	Short	of	Long	Short	of		
288	DONWOOD DR	RESIDENTIAL	19 mm	COPPER	0.3 m	Long: 3.7 m	Short: 3.7 m	N of SL	BLDG			
287	DONWOOD DR	RESIDENTIAL	19 mm	COPPER	0.3 m	Long: 4.6 m	Short: 4.6 m	S of NL	BLDG			
264	DONWOOD DR	RESIDENTIAL	25 mm	COPPER	0.3 m	Long: 2.6 m	Short: 2.6 m	W of EL	BLDG			
2	ROSELAWN BY	RESIDENTIAL	19 mm	COPPER	0.3 m	Long: 2.7 m	Short: 2.7 m	N of SL	BLDG			1989 - WM RENEWAL



EXISTING	LEGEND - PLAN	PROPOSED	EXISTING	LEGEND - PLAN	PROPOSED	EXISTING	LEGEND - PROFILE	PROPOSED
	WATERMAIN			WATERMAIN			WATERMAIN	
	HYDRANT			HYDRANT			HYDRANT	
	VALVE			VALVE			VALVE	
	LAND DRAINAGE SEWER			LAND DRAINAGE SEWER			LAND DRAINAGE SEWER	
	WASTEWATER SEWER			WASTEWATER SEWER			WASTEWATER SEWER	
	MANHOLE			MANHOLE			MANHOLE	
	CATCH BASIN			CATCH BASIN			CATCH BASIN	
	CURB INLET			CURB INLET			CURB INLET	
	JUNCTIONS			JUNCTIONS			JUNCTIONS	
	CULVERT			CULVERT			CULVERT	
	GAS			GAS			GAS	
	HYDRO TELEPHONE			HYDRO TELEPHONE			HYDRO TELEPHONE	
	CONCRETE			CONCRETE			CONCRETE	
	ASPHALT			ASPHALT			ASPHALT	
	PROPERTY LINE			PROPERTY LINE			PROPERTY LINE	
	SURVEY BAR			SURVEY BAR			SURVEY BAR	
	CURB STOP			CURB STOP			CURB STOP	
	TREE			TREE			TREE	
	ANODE			ANODE			ANODE	
	CONCRETE SIDEWALK			CONCRETE SIDEWALK			CONCRETE SIDEWALK	
	FENCE			FENCE			FENCE	

LOCATION APPROVED UNDERGROUND STRUCTURES

SUPV. U/G STRUCTURES COMMITTEE DATE

NOTE:
LOCATION OF UNDERGROUND STRUCTURES AS SHOWN ARE BASED ON THE BEST INFORMATION AVAILABLE. BUT NO GUARANTEE IS GIVEN THAT ALL EXISTING UTILITIES ARE SHOWN OR THAT THE GIVEN LOCATIONS ARE EXACT. CONFIRMATION OF EXISTENCE AND EXACT LOCATION OF ALL SERVICES MUST BE OBTAINED FROM THE INDIVIDUAL UTILITIES BEFORE PROCEEDING WITH CONSTRUCTION.

NO.	REVISIONS	DATE	BY
B	ISSUED FOR TENDER	08/05/2006	GSK
A	ISSUED FOR REVIEW	02/05/2006	GSK

EARTH TECH
A tyco INTERNATIONAL LTD. COMPANY
Earth Tech (Canada) Inc. Winnipeg, Manitoba 204.477.5381

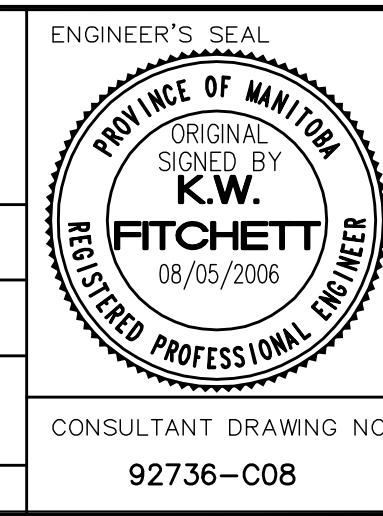
DESIGNED BY: GDL, GSK
CHECKED BY: GSK

DRAWN BY: MAF
APPROVED BY:

HOR. SCALE: 1:250
VERTICAL SCALE: 1:50

RELEASED FOR CONSTRUCTION BY: K. ZUREK

DATE: 2006/04/12
DATE: 2006/05/08



THE CITY OF WINNIPEG
Winnipeg WATER AND WASTE DEPARTMENT

2006 WATERMAIN RENEWALS CONTRACT 1

SHEET 9 OF 9
CITY DRAWING NUMBER D-8991

DONWOOD DRIVE
ROTHESAY STREET TO HONEYWOOD STREET
STA. 1+35 TO HONEYWOOD STREET

CONSULTANT DRAWING NO. 92736-C08