

- CONSTRUCTION NOTES**
1. EXPOSE EXISTING WATERMAIN & CONFIRM INVERTS PRIOR TO CONSTRUCTION.
 2. CONFIRM LOCATION OF ALL SERVICES IN THE FIELD.
 3. INSTALL WATERMAIN BY TRENCHLESS METHODS.
 4. TRENCHES AND EXCAVATIONS WITHIN 1 METRE OF A PAVED AREA INCLUDING SIDEWALKS SHALL BE CLASS 3 BACKFILL.
 5. ALL MATERIALS SHALL CONFORM TO THE CITY OF WINNIPEG STANDARD CONSTRUCTION SPECIFICATIONS.
 6. MINIMUM COVER TO TOP OF WATERMAIN SHALL BE 2.4 m.
 7. REPLACE ALL EXISTING LEAD SERVICES FROM PROPOSED WATERMAIN TO R.
 8. NOTIFY ALL AFFECTED RESIDENTS AND BUSINESSES 24 HOURS IN ADVANCE OF ANY WATER SHUTDOWNS OR DISRUPTION OF SERVICE.

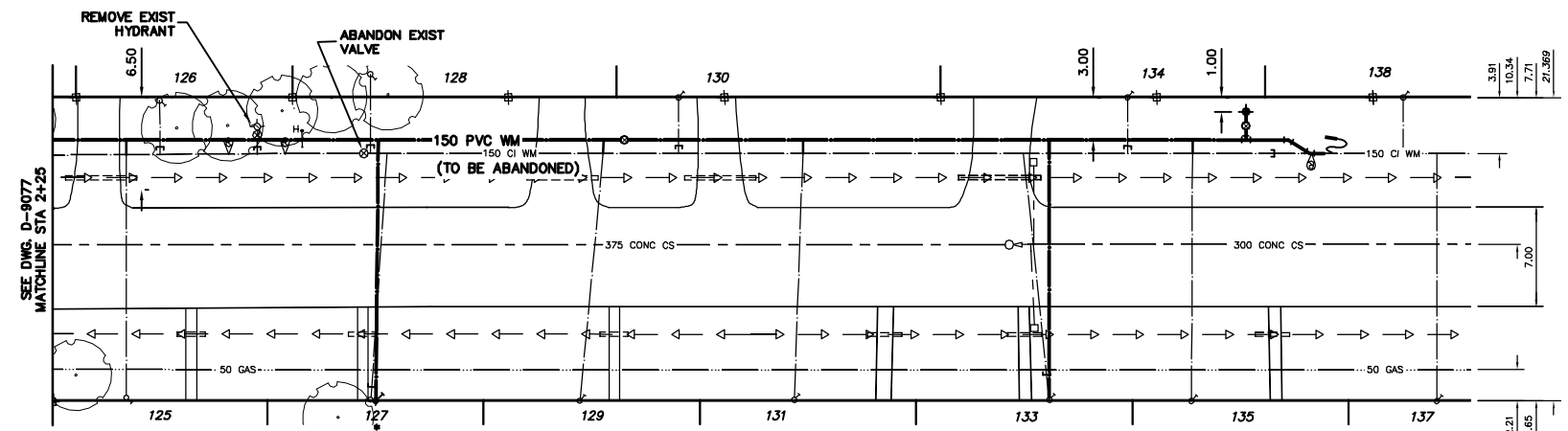
NOTE: CHAINAGES SHOWN ARE ALONG W. R. OF SUNNYSIDE BLVD.

WATER SERVICE INFORMATION

STREET	SIZE	SIZE PROP	SHORT & LONG MEASUREMENT	CORP LOCATION	REMARKS
125 SUNNYSIDE BLVD	-	-	3.1 N S SIDE	OPP S/C	-
RESIDENTIAL	-	-	110.0>NNL ASSINIBOINE	-	-
126 SUNNYSIDE BLVD	20	20	2.70 N S SIDE	-	-
RESIDENTIAL	COPPER	COPPER	112.38>NNL ASSINIBOINE	-	-
127 SUNNYSIDE BLVD	13	20	1.65 N S SIDE	9.14 FROM HYDT	-
RESIDENTIAL	LEAD	COPPER	127.16>NNL ASSINIBOINE	-	-
128 SUNNYSIDE BLVD	20	20	1.64 N S SIDE	-	1.65 INTO €
RESIDENTIAL	COPPER	COPPER	127.35>NNL ASSINIBOINE	-	-
129 SUNNYSIDE BLVD	-	-	1.2 N S SIDE	24.38 FROM HYDT	-
RESIDENTIAL	-	-	142.06>NNL ASSINIBOINE	-	-
130 SUNNYSIDE BLVD	20	20	IN LINE WITH S SIDE HSE	-	-
RESIDENTIAL	COPPER	COPPER	148.96>NNL ASSINIBOINE	-	-
131 SUNNYSIDE BLVD	20	20	1.64 N S SIDE	0.6 N OF S/C	-
RESIDENTIAL	COPPER	COPPER	127.35>NNL ASSINIBOINE	-	-
133 SUNNYSIDE BLVD	-	-	4.72 N OF SHL	54.0 FROM HYDT	-
RESIDENTIAL	-	-	174.88>NNL ASSINIBOINE	-	-
134 SUNNYSIDE BLVD	20	20	9.30 N OF SHL	-	-
RESIDENTIAL	COPPER	COPPER	180.63>NNL ASSINIBOINE	-	-
135 SUNNYSIDE BLVD	-	-	2.30 N OF SHL	-	-
RESIDENTIAL	-	-	185.14>NNL ASSINIBOINE	-	-

*SERVICES TO BE RENEWED TO R. ALL OTHERS TO BE RECONNECTED

SUNNYSIDE BOULEVARD



METRIC
WHOLE NUMBERS INDICATE MILLIMETRES
DECIMALIZED NUMBERS INDICATE METRES

NOTE: ALL VALVES TO BE INSTALLED COUNTERCLOCKWISE TO CLOSE



WARNING

IF POWER EQUIPMENT OR EXPLOSIVES ARE TO BE USED FOR EXCAVATION ON THIS PROJECT THE CONTRACTOR MUST:
1) NOTIFY THE GAS COMPANY OF THE PROPOSED LOCATION OF EXCAVATION.
2) TAKE PRECAUTION TO AVOID DAMAGE TO GAS COMPANY INSTALLATIONS.
SEE PROVINCIAL REGULATION 210/72 FOR DETAILS

200 WM	WATERMAIN	200 WM	SL, HYDRO	150 WM	WATERMAIN	150 WM
⊕	HYDRANT	⊕	MTS	⊕	HYDRANT	⊕
⊙	VALVE	⊙	TRAFFIC SIGNALS	⊙	VALVE	⊙
525 LDS	LAND DRAINAGE SEWER	525 LDS	GAS	300 LDS	LAND DRAINAGE SEWER	300 LDS
375 WWS	WASTEWATER SEWER	375 WWS	SURVEY BAR	250 WWS	WASTEWATER SEWER	250 WWS
○	MANHOLE	○	FENCE	⊕	PROFILE	⊕
□	CATCH BASIN	□	POLE - HYDRO, MTS	⊕	GROUND ABOVE PIPE	⊕
▽	CURB INLET	▽	CURB STOP	⊕	? DITCH (NORTH & WEST)	⊕
◁	REDUCER	◁	GUY ANCHOR	⊕	? DITCH (SOUTH & EAST)	⊕
×	COUPLER	×	LIGHT STANDARD	⊕	GUTTER (NORTH & WEST)	⊕
⊕	ANODE	⊕	TREE	⊕	GUTTER (SOUTH & EAST)	⊕
EXISTING	LEGEND-PLAN	PROPOSED	EXISTING	LEGEND-PLAN	PROPOSED	EXISTING

LOCATION APPROVED UNDERGROUND STRUCTURES

NOTE:
LOCATION OF UNDERGROUND STRUCTURES AS SHOWN ARE BASED ON THE BEST INFORMATION AVAILABLE BUT NO GUARANTEE IS GIVEN THAT THE GIVEN LOCATIONS ARE EXACT. CONFIRMATION OF EXISTENCE AND EXACT LOCATION OF ALL SERVICES MUST BE OBTAINED FROM THE INDIVIDUAL UTILITIES BEFORE PROCEEDING WITH CONSTRUCTION.

NO.	REVISIONS	DATE	BY

CITY OF WINNIPEG WATER AND WASTE ENGINEERING DIVISION

DESIGNED BY	NC/SC	CHECKED BY	TW
DRAWN BY	CJH	APPROVED BY	KZ
HOR. SCALE	1:250	RELEASED FOR CONSTRUCTION	
VERTICAL	1:50		
DATE	2006 08 04	DATE	

ENGINEER'S SEAL
ORIGINAL SIGNED BY S.R.J. COURNOYER 06/08/04

THE CITY OF WINNIPEG WATER AND WASTE DEPARTMENT

2006 WATERMAIN RENEWALS

SUNNYSIDE BOULEVARD
105 N OF N R. ASSINIBOINE AVENUE TO 205 N OF N R. ASSINIBOINE AVENUE

SHEET 10 OF 10
CITY DRAWING NUMBER
D-9078

BID OPPORTUNITY: 303-2006
FILENAME: D-9078.dwg
PLOT DATE: 2006 08 04