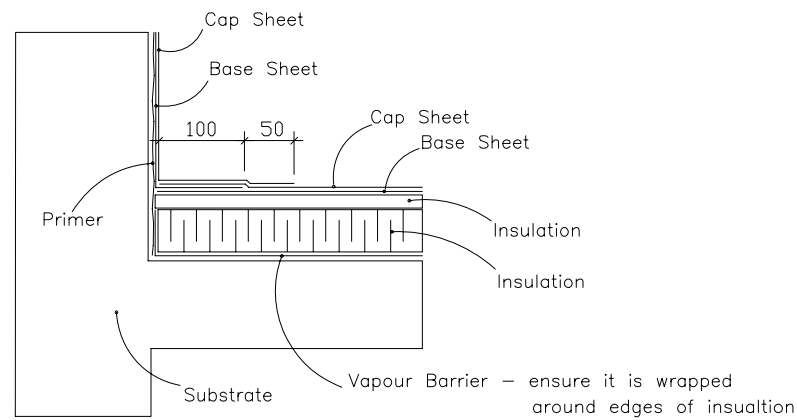
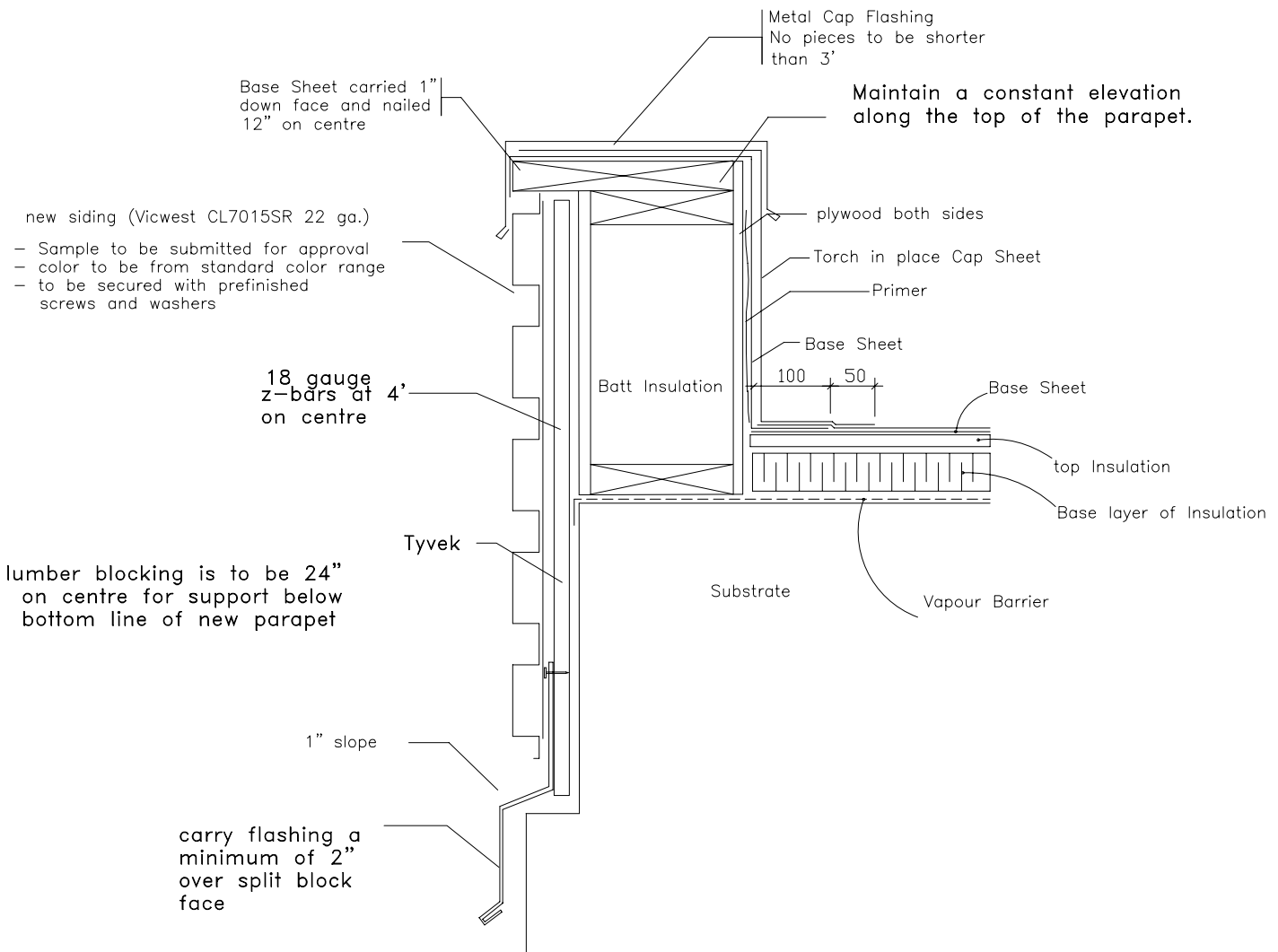


# Typical Roof Edge Detail



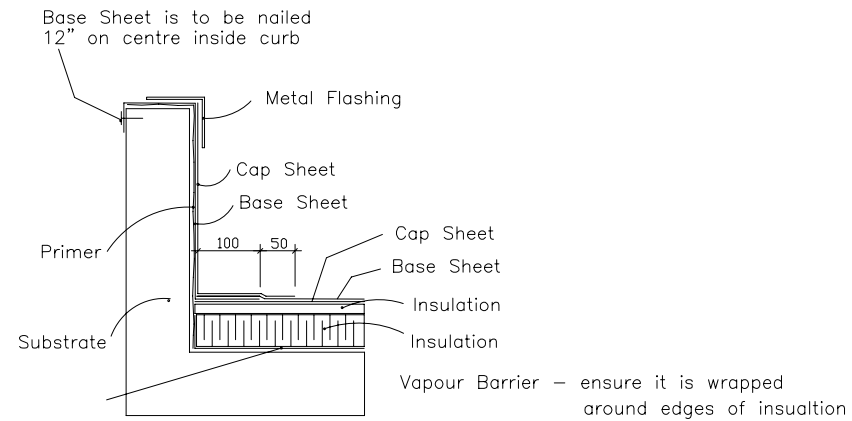
Note: Modified Bitumen stippling used in conjunction with 4 ply felt membrane is to have base sheet extend 12" onto flat and cap sheet 18" onto flat.

# Typical Parapet Construction



Note: lumber blocking is to be 24" on centre for support below bottom line of new parapet

# Mechanical Curb Flashing



<b>AGASSIZ CONSULTING GROUP</b>	
809 Pipeline Road, Winnipeg, Manitoba Phone: 697-8091 Fax: 697-8039	
Project:	Kirkfield Westwood CC 3160 McBey Winnipeg, Manitoba
Date:	March 18, 2006
Drawing No.	D-1
File no:	3795-06
Scale:	N.T.S.

Note: Details are to be similar for inverted roof assemblies