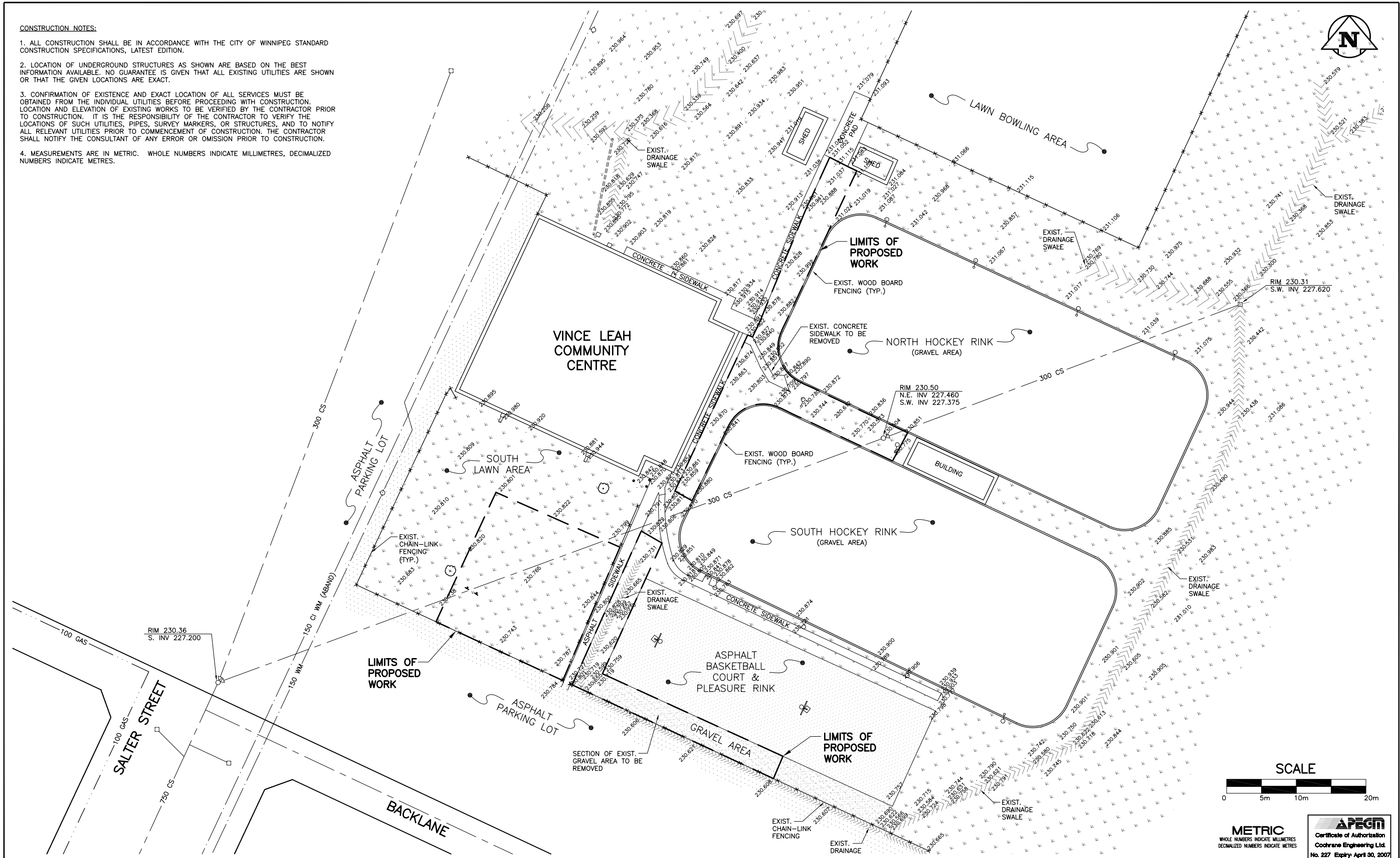


CONSTRUCTION NOTES:

1. ALL CONSTRUCTION SHALL BE IN ACCORDANCE WITH THE CITY OF WINNIPEG STANDARD CONSTRUCTION SPECIFICATIONS, LATEST EDITION.
2. LOCATION OF UNDERGROUND STRUCTURES AS SHOWN ARE BASED ON THE BEST INFORMATION AVAILABLE. NO GUARANTEE IS GIVEN THAT ALL EXISTING UTILITIES ARE SHOWN OR THAT THE GIVEN LOCATIONS ARE EXACT.
3. CONFIRMATION OF EXISTENCE AND EXACT LOCATION OF ALL SERVICES MUST BE OBTAINED FROM THE INDIVIDUAL UTILITIES BEFORE PROCEEDING WITH CONSTRUCTION. LOCATION AND ELEVATION OF EXISTING WORKS TO BE VERIFIED BY THE CONTRACTOR PRIOR TO CONSTRUCTION. IT IS THE RESPONSIBILITY OF THE CONTRACTOR TO VERIFY THE LOCATIONS OF SUCH UTILITIES, PIPES, SURVEY MARKERS, OR STRUCTURES, AND TO NOTIFY ALL RELEVANT UTILITIES PRIOR TO COMMENCEMENT OF CONSTRUCTION. THE CONTRACTOR SHALL NOTIFY THE CONSULTANT OF ANY ERROR OR OMISSION PRIOR TO CONSTRUCTION.
4. MEASUREMENTS ARE IN METRIC. WHOLE NUMBERS INDICATE MILLIMETRES, DECIMALIZED NUMBERS INDICATE METRES.



150 mm WM	WATERMAIN	150 mm WM	HYDRO	150 mm WM	WATERMAIN
⊕	HYDRANT	⊕	MTS	⊕	HYDRANT
⊕	VALVE	⊕	GRASS	⊕	VALVE
300 mm LDS	LAND DRAINAGE SEWER	300 mm LDS	SWALE	300 mm LDS	SEWER
250 mm CS	COMBINED SEWER	250 mm CS	CURB RENEWAL	300 mm LDS	300 mm LDS
○	MANHOLE	○	ASPHALT	○	
□	CATCH BASIN (CB)	□	ELEVATIONS	□	
△	CATCH PIT (CP)	△	PROPERTY LINE	△	
○	SIGN	○	SURVEY BAR	○	
○	LAMP STANDARD	○	CURB STOP	○	
○	GAS	○	RAMP CURB	○	
EXISTING	LEGEND - PLAN	NEW	EXISTING	LEGEND - PLAN	NEW

LOCATION APPROVED UNDERGROUND STRUCTURES

DATE: _____

NOTE: LOCATION OF UNDERGROUND STRUCTURES AS SHOWN ARE BASED ON THE BEST INFORMATION AVAILABLE. BUT NO GUARANTEE IS GIVEN THAT ALL EXISTING UTILITIES ARE SHOWN OR THAT THE GIVEN LOCATIONS ARE EXACT. CONFIRMATION OF EXISTENCE AND EXACT LOCATION OF ALL SERVICES MUST BE OBTAINED FROM THE INDIVIDUAL UTILITIES BEFORE PROCEEDING WITH CONSTRUCTION.

B.M.(13-036) 230.444m
 S.W. CORNER OF TEMPLETON AVE. & SALTER ST.
 TBLT. ON TOP OF 0.05m dia. X 2.4m IRON PIPE,
 3.8m E. OF W.L. OF SALTER ST. & ON S.L. OF
 TEMPLETON AVE.

COCHRANE ENGINEERING LTD.
 #600 - 5 DONALD STREET
 WINNIPEG, MANITOBA, R3L 2T4
 TEL: (204) 477-8850
 FAX: (204) 474-2864

DESIGNED BY: R.C. CHECKED BY: D.T.B.
 DRAWN BY: R.C. APPROVED BY: B.D.E.

HOR. SCALE: 1:250

DATE: APRIL 19, 2006

ENGINEER'S SEAL

D.T. BLACKBURN
 Member
 23146

CONSULTANT DRAWING NO.
 05142C01

THE CITY OF WINNIPEG
 PUBLIC WORKS DEPARTMENT

VINCE LEAH C.C. DRAINAGE IMPROVEMENT PROJECT

EXISTING SITE PLAN

CITY DRAWING NUMBER
 321-2006-C01

SHEET 1 OF 2

REV. 0