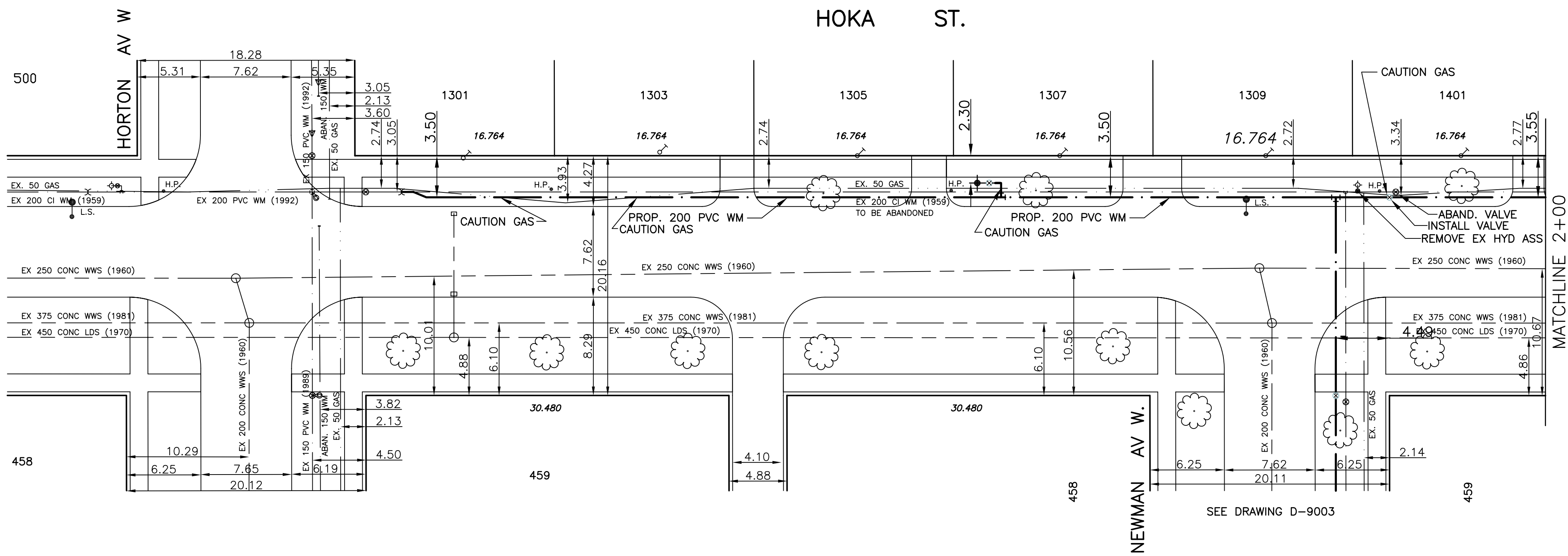


CHAINAGE ALONG WEST PROPERTY LINE OF HOKA ST.



ADDRESS & NATURE OF SERVICE	SIZE(mm) & TYPE (STREET)	SIZE(mm) & TYPE (PROP)	SHORT & LONG MEASUREMENT	CORP LOCATION	REMARKS
1301 Hoka St	Residential	Copper	3.4 S. N HSE LINE 8.2 FROM HSE FRONT	19	SEE SKETCH. CORP HE AS 1.7 N/MAINLINE VALVE ON WEST PROPERTY LINE HOKA & EDM
1303 Hoka St	Residential	Copper	4.0 SNL OF HSE 7.3 FROM HSE FRONT	19	SEE SKETCH
1305 Hoka St	Residential	Copper	4.5 SNL OF HSE 6.4 FROM HSE FRONT	19	SEE SKETCH
1307 Hoka St	Residential	Copper	4.9 SNL OF HSE 6.3 FROM HSE FRONT	19	SEE SKETCH

ADDRESS & NATURE OF SERVICE	SIZE(mm) & TYPE (STREET)	SIZE(mm) & TYPE (PROP)	SHORT & LONG MEASUREMENT	CORP LOCATION	REMARKS
1309 Hoka St	Residential	Copper	5.7 NSL OF HSE 10.7 FROM HSE FRONT	19	SEE SKETCH
1401 Hoka St	Residential	Copper	4.1 SNL OF HSE 7.6 FROM HSE FRONT	19	SEE SKETCH

BENCHMARK:  
010-012  
232.469

METRIC  
WHOLE NUMBERS INDICATE MILLIMETRES  
DECIMALIZED NUMBERS INDICATE METRES

- NOTES:**
- ALL GATE VALVES ARE TO BE COUNTER-CLOCKWISE TO OPEN WITH A BLACK OPERATING NUT.
  - WATERMAIN TO BE INSTALLED BY TRENCHLESS METHODS.
  - BACKFILL IS CLASS 5 WITHIN BOULEVARD AND CLASS 3 WHEN WITHIN PAVEMENT/SIDEWALK OR WHEN WITHIN 1.0m OF PAVEMENT OR SIDEWALK.
  - WATER SERVICES ARE 19mm COPPER UNLESS OTHERWISE NOTED.
  - MINIMUM COVER TO TOP OF WATERMAIN SHALL BE 2.4m.
  - LOCATION OF ALL SERVICES TO BE CONFIRMED IN FIELD.
  - EXPOSE EXISTING WATERMAIN TO CONFIRM DEPTH PRIOR TO CONSTRUCTION.
  - ALL LEAD SERVICES TO BE RENEWED.
  - SERVICES TO BE RENEWED SHALL BE REPLACED FROM WATERMAIN TO PROPERTY LINE. ALL OTHERS TO BE RECONNECTED.

EXISTING	LEGEND - PLAN	PROPOSED	EXISTING	LEGEND - PLAN	PROPOSED	EXISTING	LEGEND - PROFILE	PROPOSED
---	WATERMAIN	---	---	HYDRO	---	---	WATERMAIN	---
+	HYDRANT	+	+	M.T.S.	+	+	VALVE	+
○	VALVE	○	○	CONCRETE	○	○	LAND DRAINAGE SEWER	○
---	LAND DRAINAGE SEWER	---	---	ASPHALT	---	---	WASTE WATER SEWER	---
---	WASTE WATER SEWER	---	---	PROPERTY LINE	---	---	JUNCTIONS	---
○	MANHOLE	○	○	SURVEY BAR	○	○	CULVERT	○
□	CATCH BASIN	□	□	CURB STOP	□	□		
△	CURB INLET	△	△	C.B. LEAD	△	△		
---	TRAFFIC SIGNAL	---	---	SIDEWALK	---	---		
---	GAS	---						

LOCATION APPROVED

SUPV. U/G STRUCTURES COMMITTEE DATE

NOTE:  
LOCATION OF UNDERGROUND STRUCTURES AS SHOWN ARE BASED ON THE BEST INFORMATION AVAILABLE BUT NO GUARANTEE IS GIVEN THAT ALL EXISTING UTILITIES ARE SHOWN OR THAT THE GIVEN LOCATIONS ARE EXACT. CONFIRMATION OF EXISTENCE AND EXACT LOCATION OF ALL SERVICES MUST BE OBTAINED FROM THE INDIVIDUAL UTILITIES BEFORE PROCEEDING WITH CONSTRUCTION.

NO.	REVISIONS	DATE	BY

**SEG ENGINEERING INC.**  
200 TACHE AVENUE  
WINNIPEG, MANITOBA  
(204) 233-2113

DESIGNED BY: DJ  
CHECKED BY: SM

DRAWN BY: RH  
APPROVED BY: IMck

HOR. SCALE: 1:250  
VERT. SCALE: 1:50

RELEASED FOR CONSTRUCTION  
ORIGINALLY SIGNED BY  
K. ZUREK P. ENG  
DATE: MAY 15, 2006

**APECM**  
Certificate of Authorization  
SEG Engineering Inc.  
No. 252 Expiry: April 30, 2007

ENGINEERS SEAL  
I. G. MCKINNON  
REGISTERED PROFESSIONAL ENGINEER

**THE CITY OF WINNIPEG**  
WATER AND WASTE DEPARTMENT

2006 CAPITAL WORKS  
WATERMAIN RENEWALS - CONTRACT 18  
HOKA STREET

HORTON AVENUE WEST  
TO NEWMAN AVENUE WEST

CITY DRAWING NO.  
SHEET 1 OF 4  
D-9000