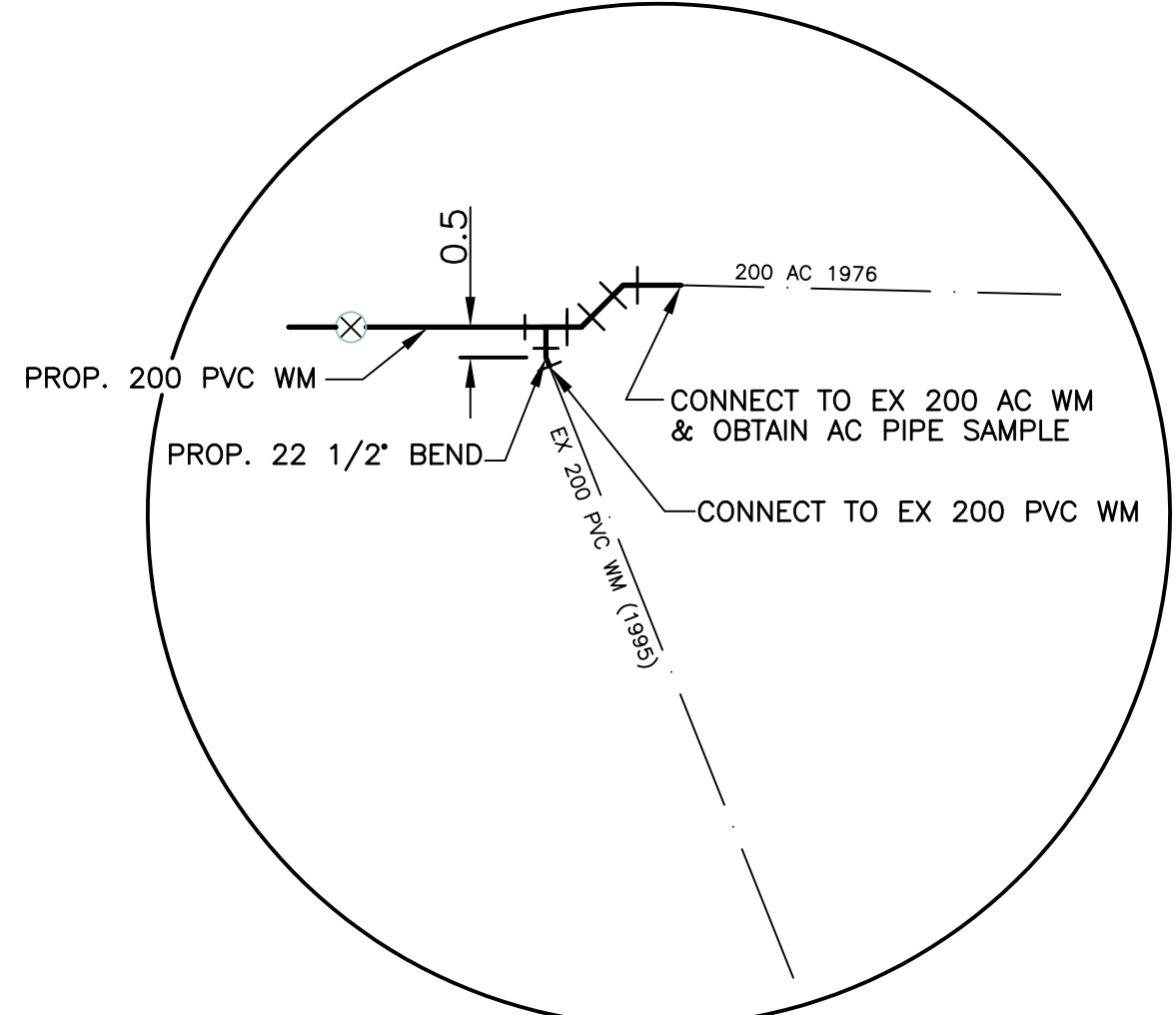
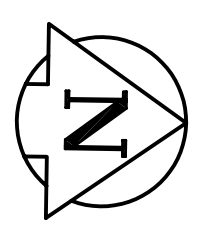
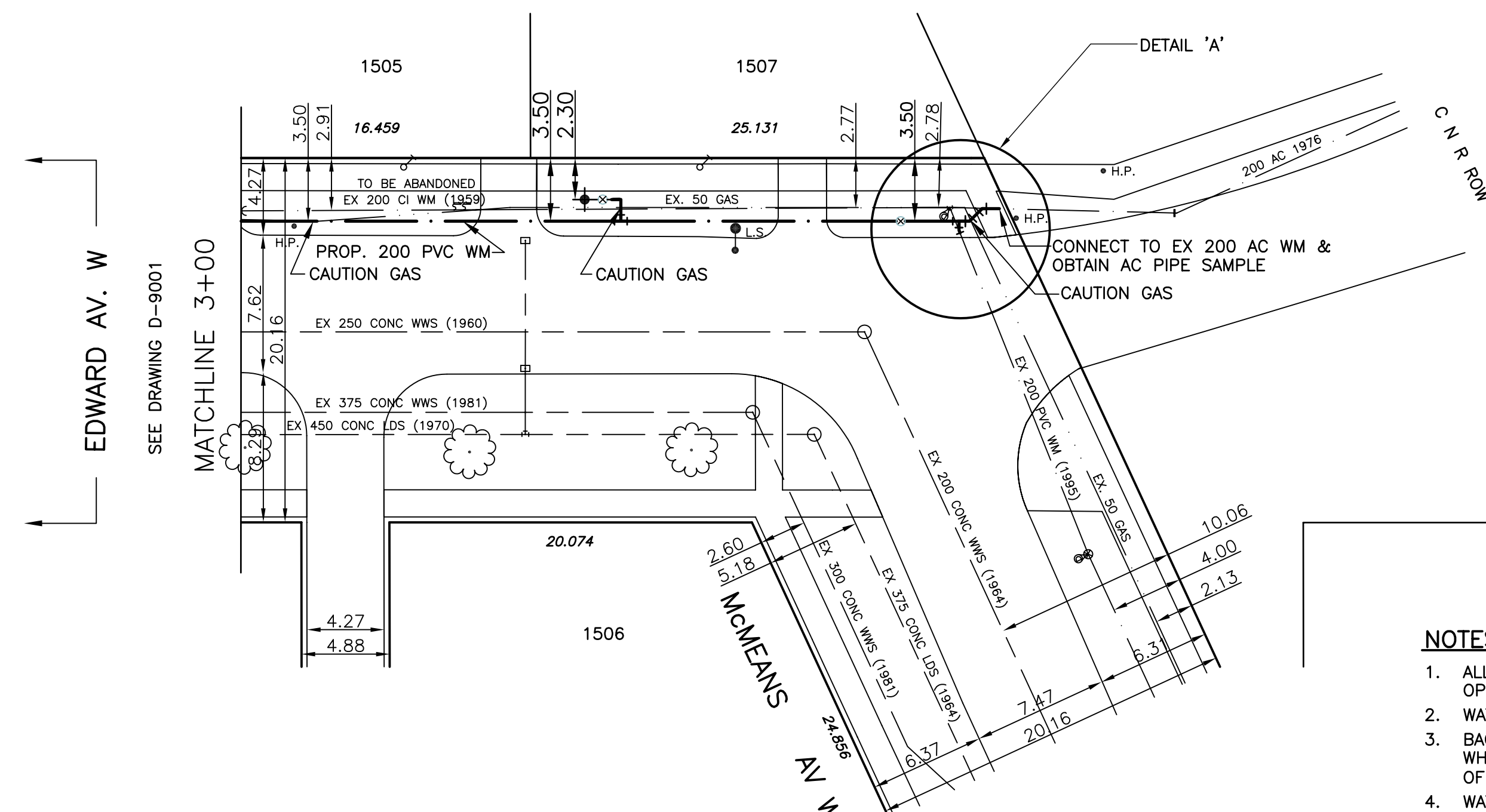


CHAINAGE ALONG WEST PROPERTY LINE OF HOKA ST.

DETAIL 'A'



HOKA ST.



ADDRESS & NATURE OF SERVICE	SIZE(mm) & TYPE (STREET)	SIZE(mm) & TYPE (PROP)	SHORT & LONG MEASUREMENT	CORP LOCATION	REMARKS
1505 Hoka St	19 Residential	Copper	4.6 SNL OF HSE 9.6 FROM HSE FRONT		SEE SKETCH
1506 Hoka St	19 Residential	Copper	3.8 NEL OF HSE 6.7 FROM HSE SIDE		TAPPED OFF MCMEANS
1507 Hoka St	19 Residential	Copper	4.0 SNL OF HSE 8.1 FROM HSE FRONT		SEE SKETCH

- NOTES:**
- ALL GATE VALVES ARE TO BE COUNTER-CLOCKWISE TO OPEN WITH A BLACK OPERATING NUT.
 - WATERMAIN TO BE INSTALLED BY TRENCHLESS METHODS.
 - BACKFILL IS CLASS 5 WITHIN BOULEVARD AND CLASS 3 WHEN WITHIN PAVEMENT/SIDEWALK OR WHEN WITHIN 1.0m OF PAVEMENT OR SIDEWALK.
 - WATER SERVICES ARE 19mm COPPER UNLESS OTHERWISE NOTED.
 - MINIMUM COVER TO TOP OF WATERMAIN SHALL BE 2.4m.
 - LOCATION OF ALL SERVICES TO BE CONFIRMED IN FIELD.
 - EXPOSE EXISTING WATERMAIN TO CONFIRM DEPTH PRIOR TO CONSTRUCTION.
 - ALL LEAD SERVICES TO BE RENEWED.
 - SERVICES TO BE RENEWED SHALL BE REPLACED FROM WATERMAIN TO PROPERTY LINE. ALL OTHERS TO BE RECONNECTED.



BENCHMARK:
010-012
232.469

METRIC
WHOLE NUMBERS INDICATE MILLIMETRES
DECIMALIZED NUMBERS INDICATE METRES

EXISTING	LEGEND - PLAN	PROPOSED	EXISTING	LEGEND - PLAN	PROPOSED	EXISTING	LEGEND - PROFILE	PROPOSED
—	WATERMAIN	—	—	HYDRO	—	—	CENTER LINE	—
—	HYDRANT	—	—	M.T.S.	—	—	NORTH GUTTER LINE	—
—	VALVE	—	—	CONCRETE	—	—	SOUTH GUTTER LINE	—
—	LAND DRAINAGE SEWER	—	—	ASPHALT	—	—	WATERMAIN	—
—	WASTE WATER SEWER	—	—	PROPERTY LINE	—	—	VALVE	—
—	MANHOLE	—	—	SURVEY BAR	—	—	LAND DRAINAGE SEWER	—
—	CATCH BASIN	—	—	CURB STOP	—	—	WASTE WATER SEWER	—
—	CURB INLET	—	—	C.B. LEAD	—	—	JUNCTIONS	—
—	TRAFFIC SIGNAL	—	—	SIDEWALK	—	—	CULVERT	—
—	STEAM HT.	—	—	SIDEWALK RAMP	—	—		—
—	GAS	—	—	ELEVATIONS	—	—		—

LOCATION APPROVED

SUPV. U/G STRUCTURES COMMITTEE DATE

NOTE:
LOCATION OF UNDERGROUND STRUCTURES AS SHOWN ARE BASED ON THE BEST INFORMATION AVAILABLE BUT NO GUARANTEE IS GIVEN OR THAT ALL EXISTING UTILITIES ARE SHOWN OR THAT THE GIVEN LOCATIONS ARE EXACT. CONFIRMATION OF EXISTENCE AND EXACT LOCATION OF ALL SERVICES MUST BE OBTAINED FROM THE INDIVIDUAL UTILITIES BEFORE PROCEEDING WITH CONSTRUCTION.

SEG ENGINEERING INC.
200 TACHE AVENUE
WINNIPEG, MANITOBA
(204) 233-2113

DESIGNED BY: DJ
CHECKED BY: SM

DRAWN BY: RH
APPROVED BY: IMck

HOR. SCALE: 1:250
VERT. SCALE: 1:50

RELEASED FOR CONSTRUCTION BY: K. ZUREK P. ENG
DATE: MAY 15, 2006



THE CITY OF WINNIPEG
WATER AND WASTE DEPARTMENT

2006 CAPITAL WORKS
WATERMAIN RENEWALS - CONTRACT 18
HOKA STREET

EDWARD AVENUE WEST
TO MCMEANS AVENUE WEST

CITY DRAWING NO.
SHEET 3 OF 4
D-9002