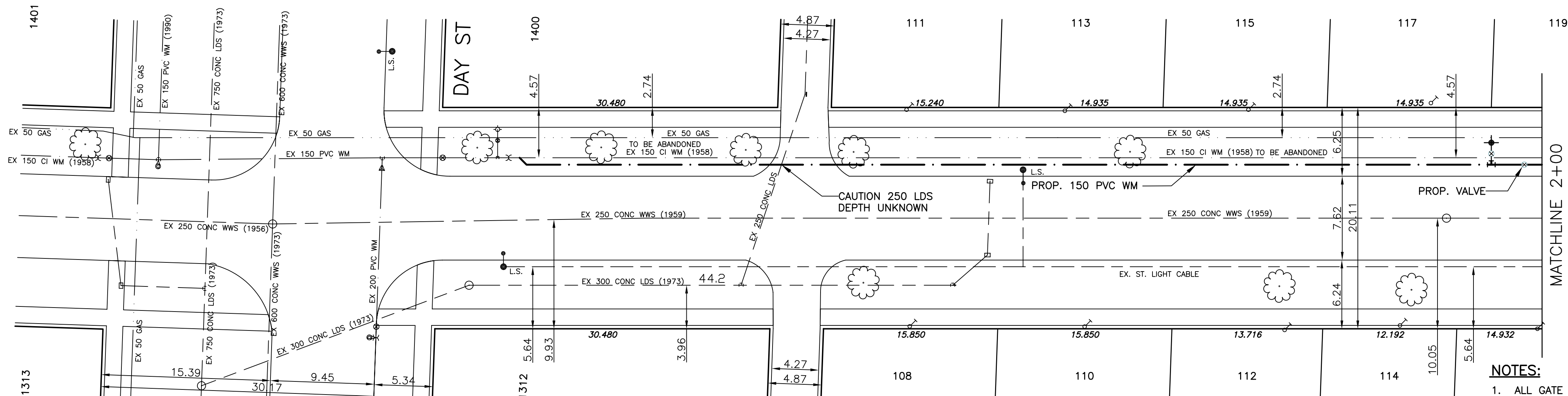
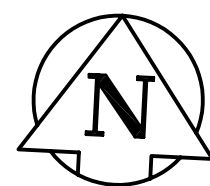


CHAINAGE ALONG THE NORTH PROPERTY LINE OF NEWMAN AV.

NEWMAN AV. EAST



ADDRESS & NATURE OF SERVICE	SIZE(mm) & TYPE (STREET)	SIZE(mm) & TYPE (PROP)	SHORT & LONG MEASUREMENT	CORP LOCATION	REMARKS
110 Newman Ave East Residential	19 Copper		3.4 E.E. HSE LINE 7.5 FROM HSE FRONT		SEE SKETCH
111 Newman Ave East Residential	19 Copper		4.2 E.W. HSE LINE 8.1 FROM HSE FRONT		SEE SKETCH
112 Newman Ave East Residential	19 Copper		2.4 W.E. HOUSE LINE 6.7 FROM HSE FRONT		SEE SKETCH
112 Newman Ave East Residential	19 Copper		3.7 W.E. HSE LINE 5.0 FROM HSE LINE		SEE SKETCH
113 Newman Ave East Residential	19 Copper		3.5 E.W. HSE LINE 5.0 FROM HSE FRONT		SEE SKETCH
114 Newman Ave East Residential	19 Copper		0.3 W.E. HSE LINE 6.7 FROM HSE FRONT		SEE SKETCH



ADDRESS & NATURE OF SERVICE	SIZE(mm) & TYPE (STREET)	SIZE(mm) & TYPE (PROP)	SHORT & LONG MEASUREMENT	CORP LOCATION	REMARKS
114 Newman Ave East Residential	19 Copper		2.6 W.E. HSE LINE 6.9 FROM HSE FRONT		SEE SKETCH
115 Newman Ave East Residential	19 Copper		3.4 W.E. HSE LINE 4.8 FROM HSE FRONT		SEE SKETCH
115 Newman Ave East Residential	19 Copper		6.1 E.W. HSE LINE 7.0 FROM HSE FRONT		SEE SKETCH, SHORT CONNECTION
116 Newman Ave East Residential	19 Copper		6.4 W.E. HSE LINE 6.7 FROM HSE FRONT		SEE SKETCH, LONG CONNECTION
117 Newman Ave East Residential	19 Copper		4.1 W.E. HSE LINE 4.0 FROM HSE FRONT		SEE SKETCH
117 Newman Ave East Residential	19 Copper		4.6 W.E. HSE LINE 7.0 FROM HSE FRONT		SEE SKETCH, SHORT CONNECTION

- NOTES:**
- ALL GATE VALVES ARE TO BE COUNTER-CLOCKWISE TO OPEN WITH A BLACK OPERATING NUT.
 - WATERMAIN TO BE INSTALLED BY TRENCHLESS METHODS.
 - BACKFILL IS CLASS 5 WITHIN BOULEVARD AND CLASS 3 WHEN WITHIN PAVEMENT/SIDEWALK OR WHEN WITHIN 1.0m OF PAVEMENT OR SIDEWALK.
 - WATER SERVICES ARE 19mm COPPER UNLESS OTHERWISE NOTED.
 - MINIMUM COVER TO TOP OF WATERMAIN SHALL BE 2.4m.
 - LOCATION OF ALL SERVICES TO BE CONFIRMED IN FIELD.
 - EXPOSE EXISTING WATERMAIN TO CONFIRM DEPTH PRIOR TO CONSTRUCTION.
 - ALL LEAD SERVICES TO BE RENEWED.
 - SERVICES TO BE RENEWED SHALL BE REPLACED FROM WATERMAIN TO PROPERTY LINE. ALL OTHERS TO BE RECONNECTED.

EXISTING	LEGEND - PLAN	PROPOSED	EXISTING	LEGEND - PLAN	PROPOSED	EXISTING	LEGEND - PROFILE	PROPOSED
○	WATERMAIN	○	---	HYDRO	---	---	WATERMAIN	---
⊕	HYDRANT VALVE	⊕	---	M.T.S.	---	---	VALVE	---
---	LAND DRAINAGE SEWER	---	---	CONCRETE	---	---	LAND DRAINAGE SEWER	---
---	WASTE WATER SEWER	---	---	ASPHALT	---	---	WASTE WATER SEWER	---
○	MANHOLE	○	---	PROPERTY LINE	---	---	JUNCTIONS	---
□	CATCH BASIN	□	---	SURVEY BAR	---	---	CULVERT	---
△	CURB INLET	△	---	CURB STOP	---	---		
---	TRAFFIC SIGNAL	---	---	C.B. LEAD	---	---		
---	GAS	---	---	SIDEWALK	---	---		

LOCATION APPROVED

SUPV. U/G STRUCTURES COMMITTEE DATE

NOTE: LOCATION OF UNDERGROUND STRUCTURES AS SHOWN ARE BASED ON THE BEST INFORMATION AVAILABLE BUT NO GUARANTEE IS GIVEN THAT ALL EXISTING UTILITIES ARE SHOWN OR THAT THE GIVEN LOCATIONS ARE EXACT. CONFIRMATION OF EXISTENCE AND EXACT LOCATION OF ALL SERVICES MUST BE OBTAINED FROM THE INDIVIDUAL UTILITIES BEFORE PROCEEDING WITH CONSTRUCTION.

BENCHMARK: BM 010-028 ELEV. 233.050

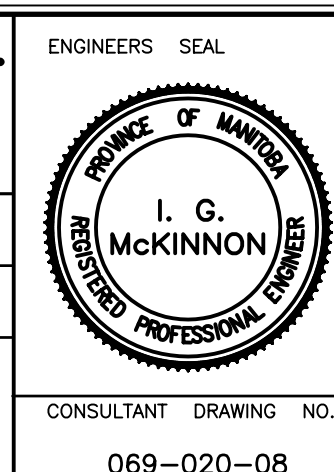
CWMB:

SEG ENGINEERING INC.
200 TACHE AVENUE WINNIPEG, MANITOBA (204)-233-2113

DESIGNED BY: D.J. CHECKED BY: S.M.
DRAWN BY: R.H. APPROVED BY: S.M.

HOR. SCALE: 1:250
VERT. SCALE: 1:50

RELEASED FOR CONSTRUCTION: K. ZUREK P. ENG
ORIGINALLY SIGNED BY: DATE MAY 15, 2006



THE CITY OF WINNIPEG
WATER AND WASTE DEPARTMENT

2006 CAPITAL WORKS
WATERMAIN RENEWAL - CONTRACT 18
NEWMAN AVENUE EAST

FROM DAY STREET TO 100 M EAST OF DAY STREET

CITY DRAWING NO. SHEET 1 OF 2
D-9004