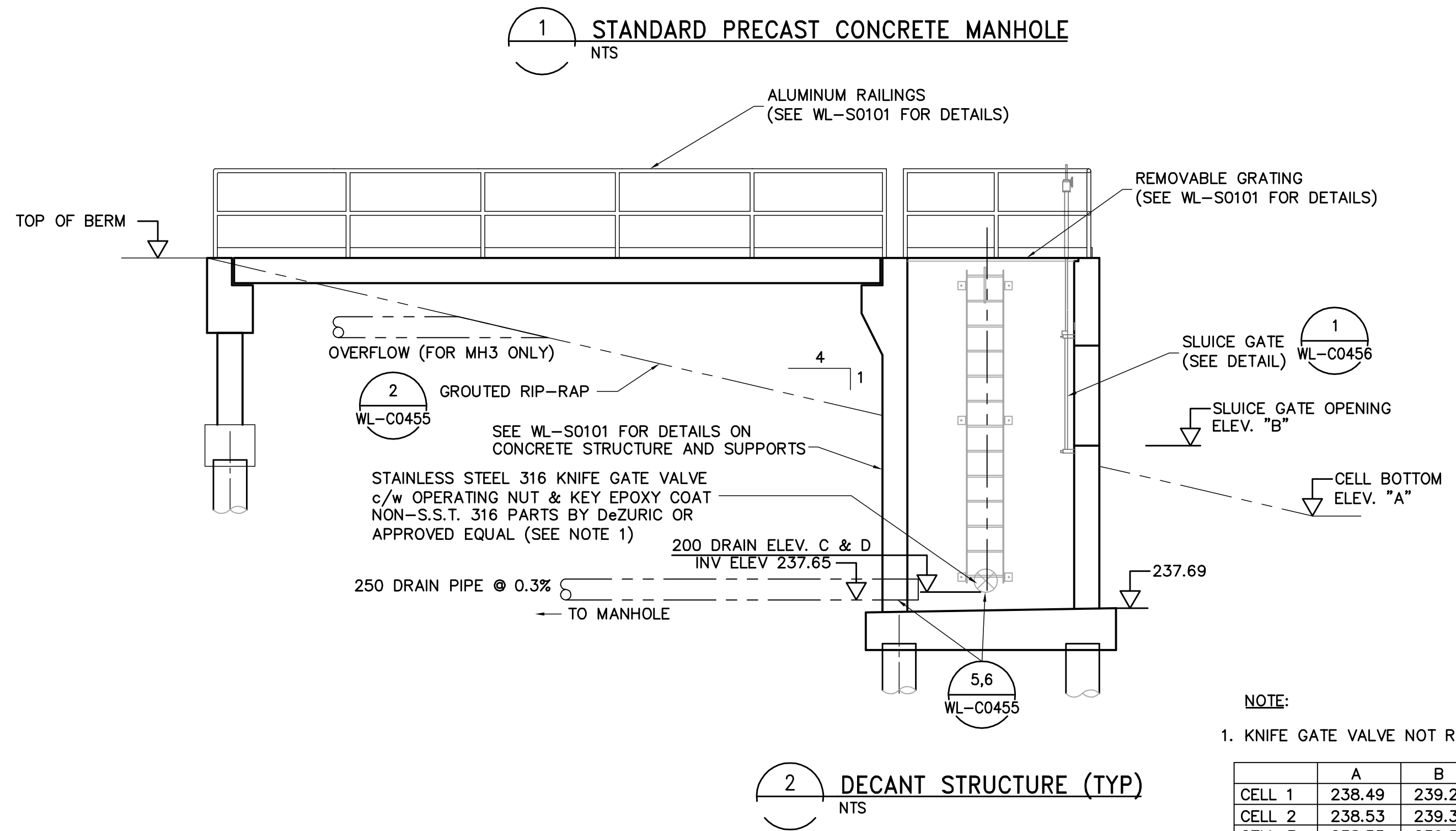
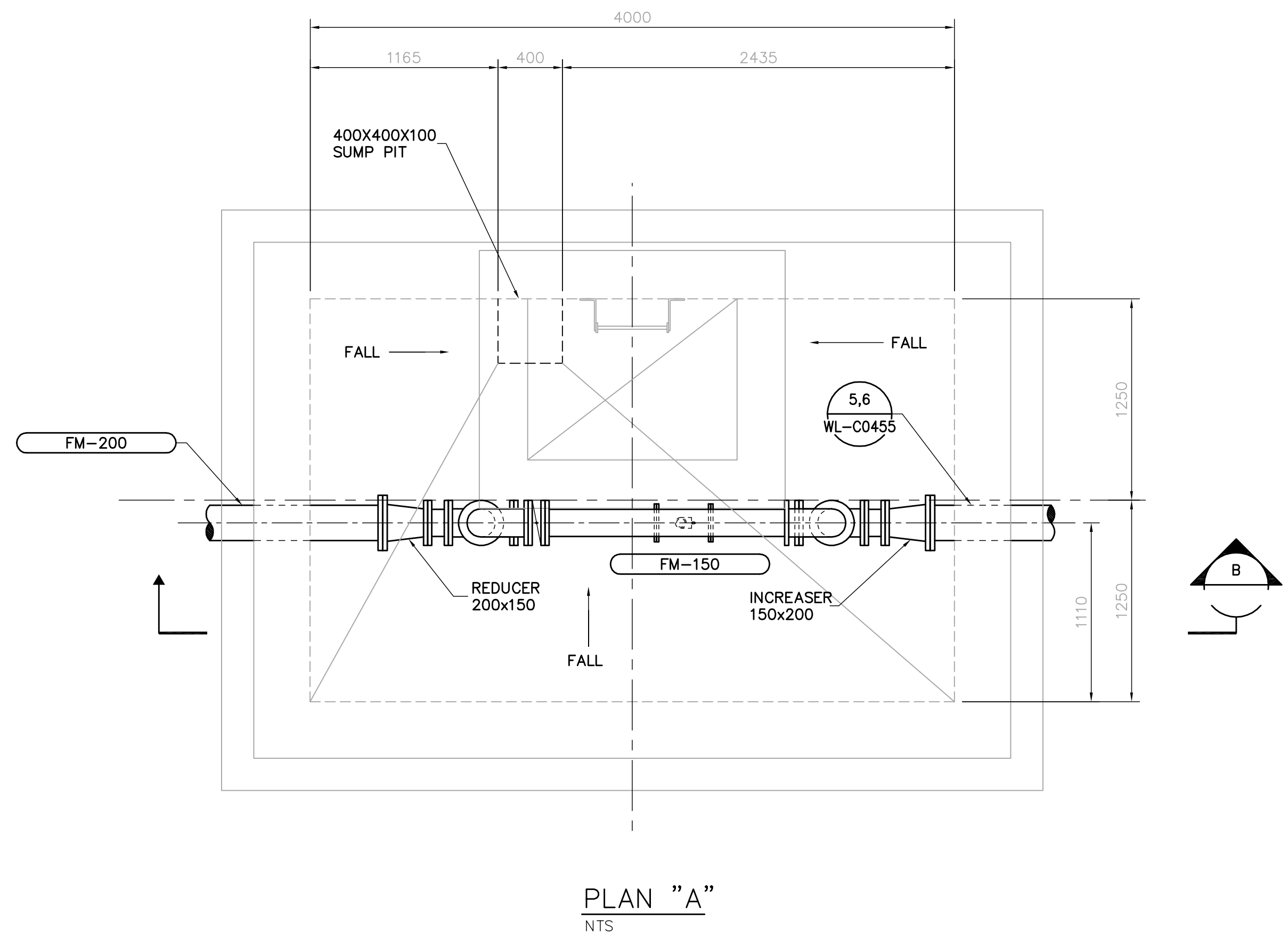


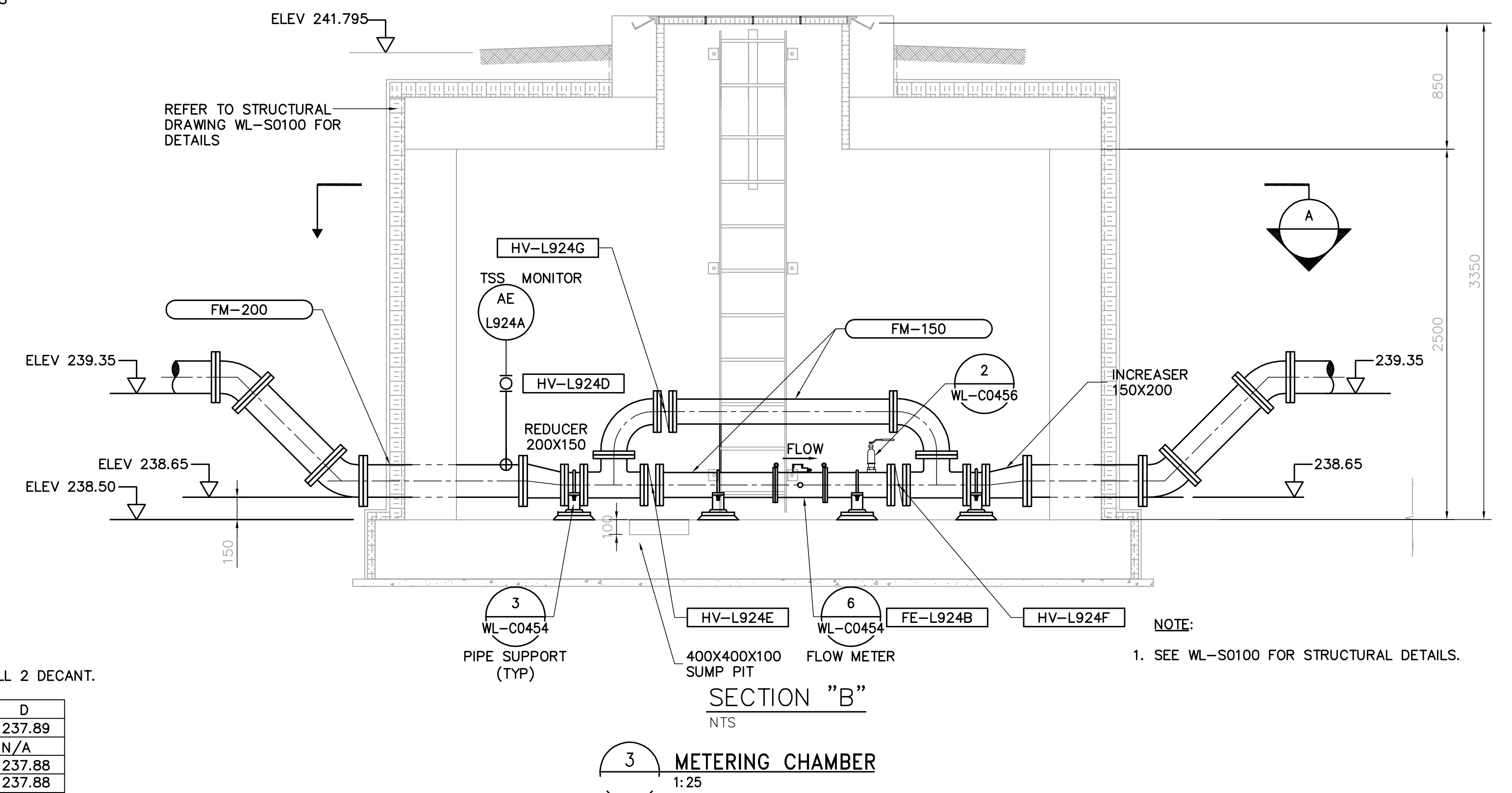
- NOTE:**
1. MANHOLE AS PER CITY OF WINNIPEG STANDARD CONSTRUCTION SPECIFICATION CW-2130-R6
 2. COMPLY WITH ASTM C478-88, SPECIFICATION FOR PRE-CAST REINFORCED CONCRETE MANHOLE SECTIONS AND CAN3-423-M7, CONCRETE MATERIALS AND METHODS FOR CONCRETE.



NOTE:

1. KNIFE GATE VALVE NOT REQUIRED IN CELL 2 DECANT.

	A	B	C	D
CELL 1	238.49	239.29	237.89	237.89
CELL 2	238.53	239.33	N/A	N/A
CELL 3	238.55	239.35	237.88	237.88
CELL 4	238.48	239.28	237.98	237.88



<p>APEGM Certificate of Authorization Earth Tech Canada Inc. No. 730 Expiry: April 30, 2006</p>	<p>Frederickson Cooper ARCHITECTS</p>	<p>EarthTech A Tyco International Ltd. Company</p>	ENGINEER'S SEAL	<p>THE CITY OF WINNIPEG WATER AND WASTE DEPARTMENT ENGINEERING DIVISION</p>		
			DESIGNED BY: SM		CHECKED BY: SRB	ORIGINAL SIGNED BY: S.R. BILEVICIUS
			DRAWN BY: JBC		APPROVED BY: DJT	2006/03/07
			SCALE: AS NOTED		RELEASED FOR CONSTRUCTION BY: R. SOROKOWSKI	CONSULTANT DRAWING NO. WL-C0450
NO. REVISIONS	DATE	DATE	DATE	<p>WATER TREATMENT PLANT CONSTRUCTION OF DEWATERING CELLS</p> <p>CIVIL MISCELLANEOUS DETAILS</p>		