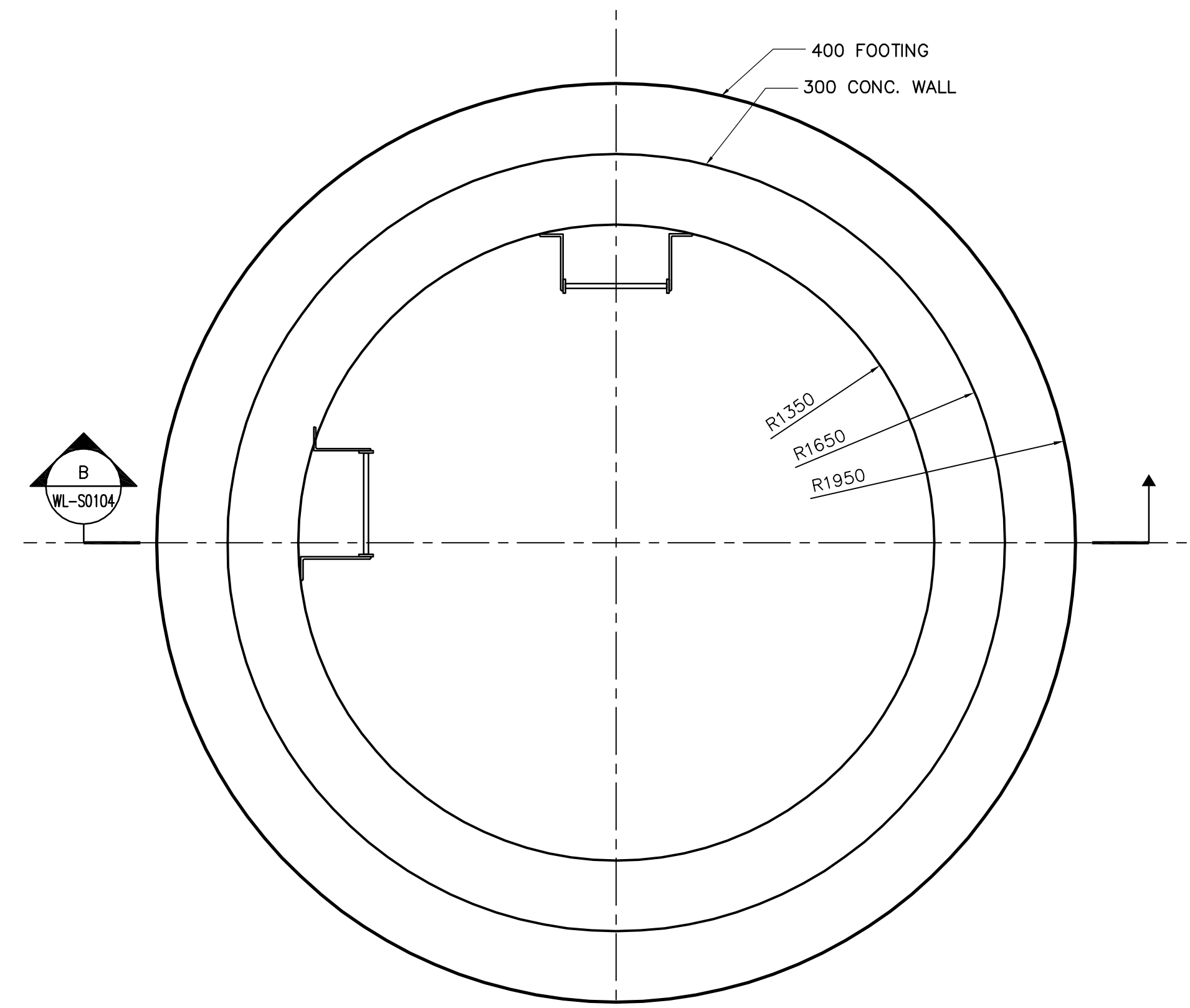


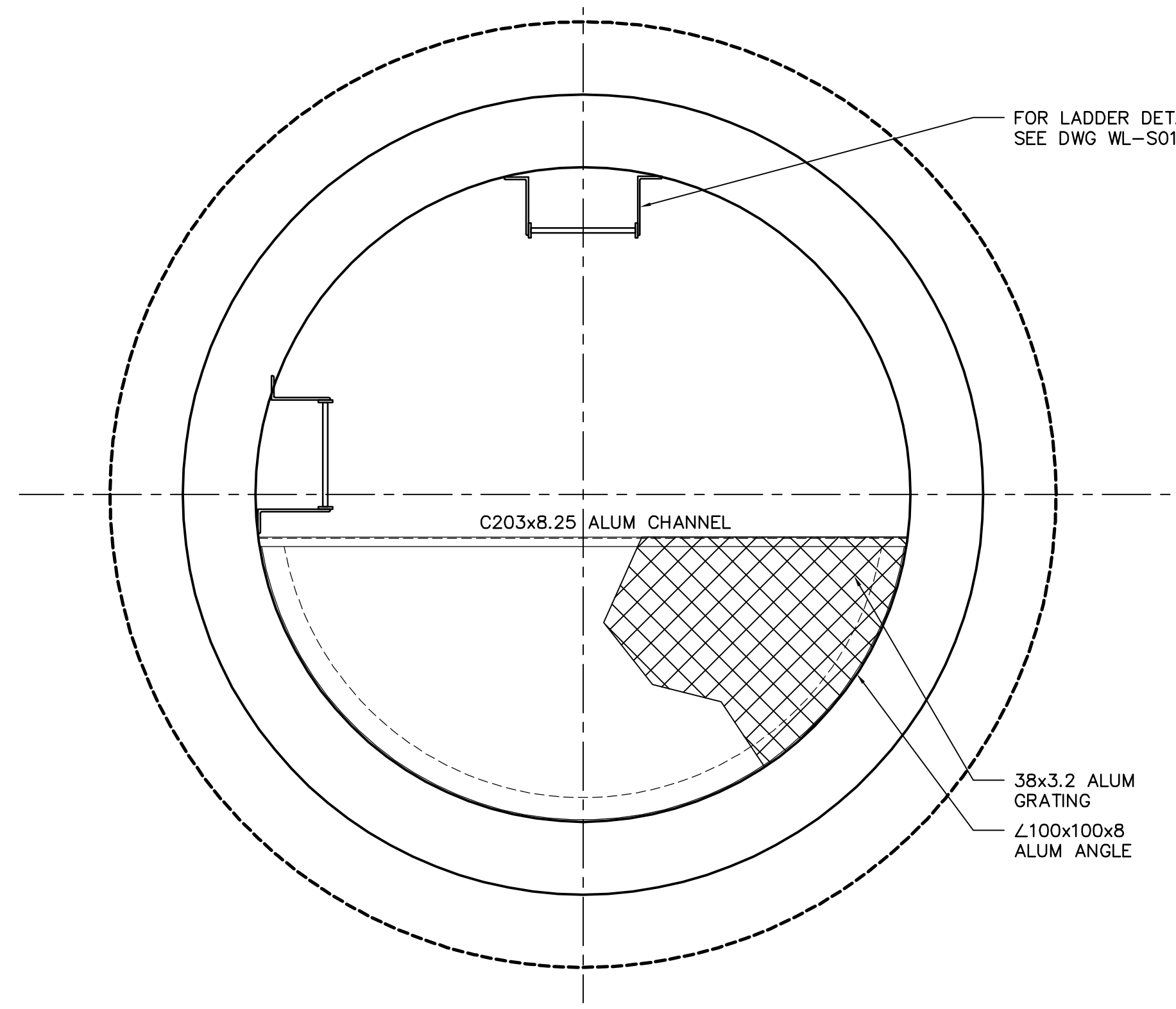
6-600Ø C.I.P. PILES x 12m LG  
 6-20M VERT x 8m LG c/w 400  
 BEND 10M TIES @ 500 o/c.  
 FIRST 3 TIES @ 150

1 FOOTING PLAN AT EL. 235.000  
 WL-S0103 1:20



400 FOOTING  
 300 CONC. WALL

2 FOUNDATION PLAN  
 WL-S0103 1:20

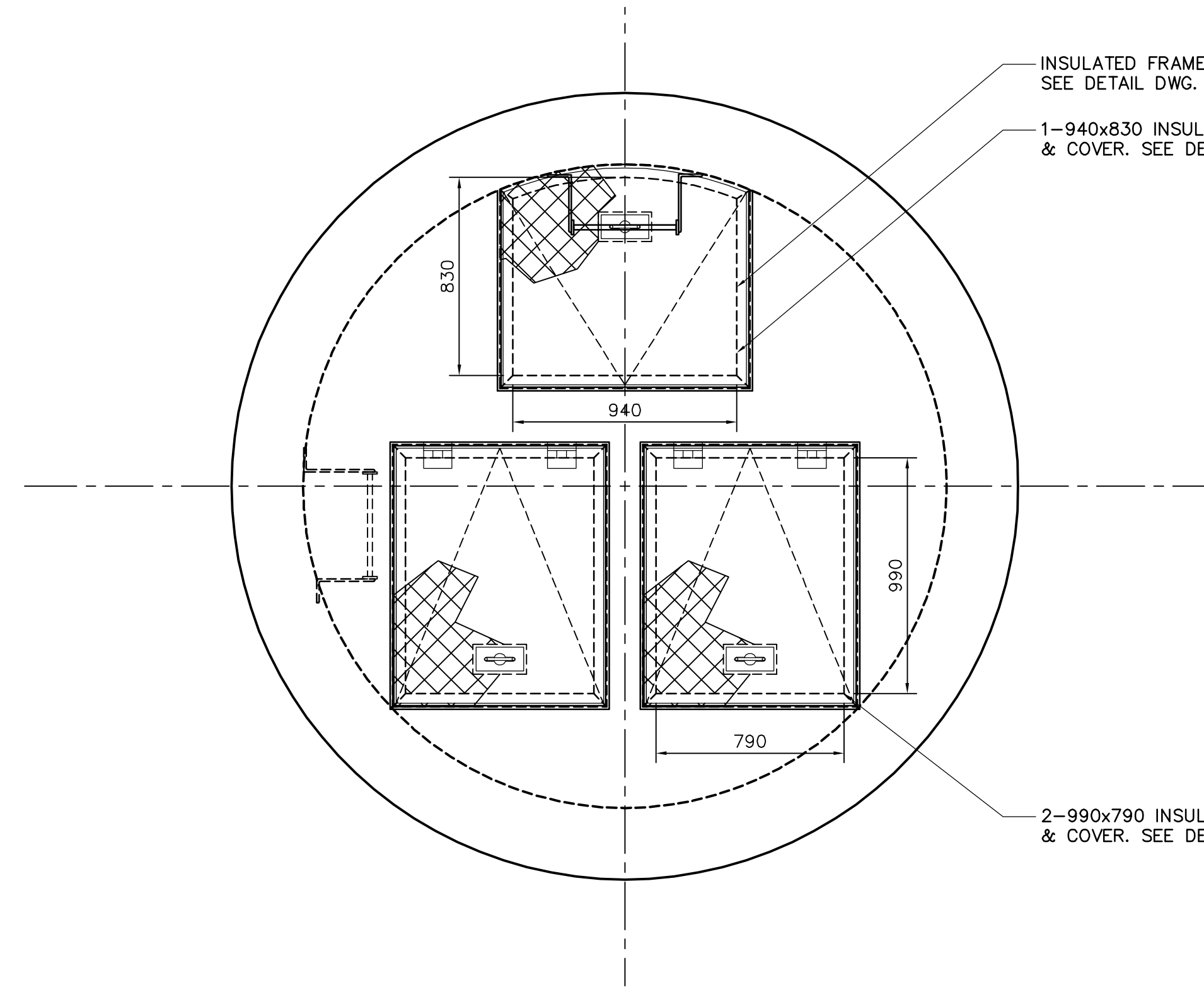


FOR LADDER DETAIL  
 SEE DWG WL-S0104

C203x8.25 ALUM CHANNEL

38x3.2 ALUM  
 GRATING  
 L100x100x8  
 ALUM ANGLE

3 PLATFORM PLAN  
 WL-S0103 1:20



INSULATED FRAME & COVER.  
 SEE DETAIL DWG. WL-S0104  
 1-940x830 INSULATED FRAME  
 & COVER. SEE DETAIL DWG. WL-S0104

2-990x790 INSULATED FRAME  
 & COVER. SEE DETAIL DWG. WL-S0104

4 COVER PLAN AT EL. 242.250  
 WL-S0103 1:20

<p>Certificate of Authorization                  Earth Tech Canada Inc.                  No. 730 Expiry: April 30, 2006</p>	B.M. ELEV.	<p>Frederickson Cooper                  ARCHITECTS</p>	<p>A Terra International Ltd. Company</p>	ENGINEER'S SEAL	<p>THE CITY OF WINNIPEG                  WATER AND WASTE DEPARTMENT                  ENGINEERING DIVISION</p>		
				DESIGNED BY: FK		CHECKED BY: MK	ORIGINAL SIGNED BY: M. KLASSEN
				DRAWN BY: WDB		APPROVED BY: DJT	2006/03/07
				SCALE: AS NOTED		RELEASED FOR CONSTRUCTION BY: RON SOROKOWSKI	CONSULTANT DRAWING NO. WL-S0103
	00 ISSUED FOR TENDER 06/03/07 WDB	DATE 2006/03/02	DATE 2006/03/07		WATER TREATMENT PLANT CONSTRUCTION OF DEWATERING CELLS CITY FILE NUMBER SHEET OF STRUCTURAL DEWATERING PUMP STATION FTG PLAN, FDN PLAN, PLATFORM & COVER PLAN CITY DRAWING NUMBER 1-0601L-A-S0103-001-000		