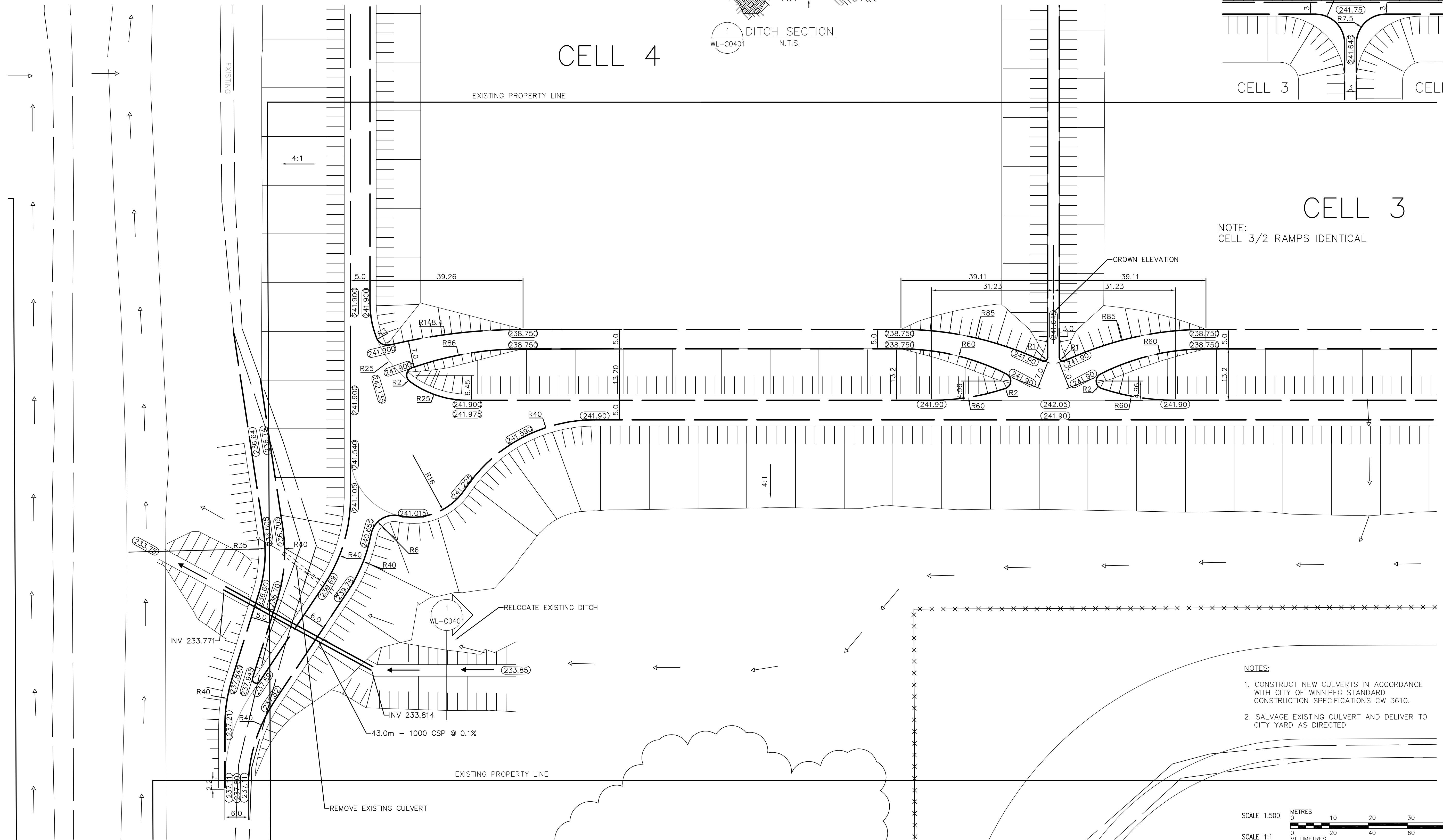


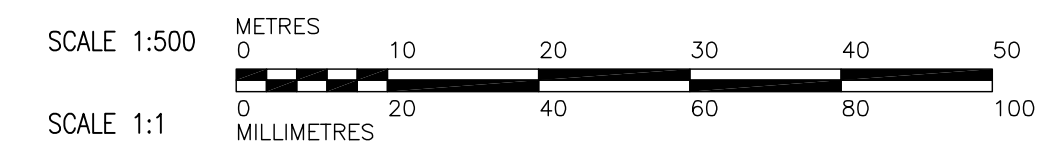
CELL 4

CELL 3

NOTE:  
CELL 3/2 RAMPS IDENTICAL



- NOTES:
1. CONSTRUCT NEW CULVERTS IN ACCORDANCE WITH CITY OF WINNIPEG STANDARD CONSTRUCTION SPECIFICATIONS CW 3610.
  2. SALVAGE EXISTING CULVERT AND DELIVER TO CITY YARD AS DIRECTED



150 mm W.M.	WATERMAIN	150 mm W.M.	HYDRO	●	LIGHT STANDARD
◇	HYDRANT	+	M.T.S.	←	ANCHOR
⊙	VALVE	○	CONCRETE	•	POLE
300mm L.D.S.	LAND DRAINAGE SEWER	300mm L.D.S.	ASPHALT	•	CONTOURS
250mm W.W.S.	WASTEWATER SEWER	250mm W.W.S.	PROPERTY LINE	391.0	RAIL X-ING SIGNAL
○	MANHOLE	+	SURVEY BAR		⊙ RAILWAY TRACK
□	CATCH BASIN	232.750	ELEVATION	⊙	DITCH
▽	CURB INLET	300	TREE	⊙	TEST HOLE
+	JUNCTIONS		ANODE		
—	CULVERT		CONCRETE SIDEWALK		
—	GAS		FENCE		
EXISTING	LEGEND - PLAN	PROPOSED	EXISTING	LEGEND - PLAN	PROPOSED

**APECA**  
Certificate of Authorization  
Earth Tech Canada Inc.  
No. 730 Expiry: April 30, 2006

B.M. ELEV.	
DESIGNED BY	GK
CHECKED BY	SRB
DRAWN BY	JS
APPROVED BY	
SCALE:	1:500
RELEASED FOR CONSTRUCTION BY:	
00 ISSUED FOR TENDER	06/03/07 JS
NO. REVISIONS	DATE BY
	2006/01/02

**CH2M HILL**  
Frederickson Cooper ARCHITECTS

**EarthTech**  
A Tyco International Ltd. Company

ENGINEER'S SEAL

CONSULTANT DRAWING NO.  
WL-C0401

**THE CITY OF WINNIPEG**  
WATER AND WASTE DEPARTMENT  
ENGINEERING DIVISION

WATER TREATMENT PLANT  
CONSTRUCTION OF DEWATERING CELLS

CITY FILE NUMBER  
SHEET OF

CITY DRAWING NUMBER  
1-0601L-D-C0401-001-000

CIVIL  
ROAD GEOMETRY AND GRADING DETAILS  
PART PLAN SHEET 1