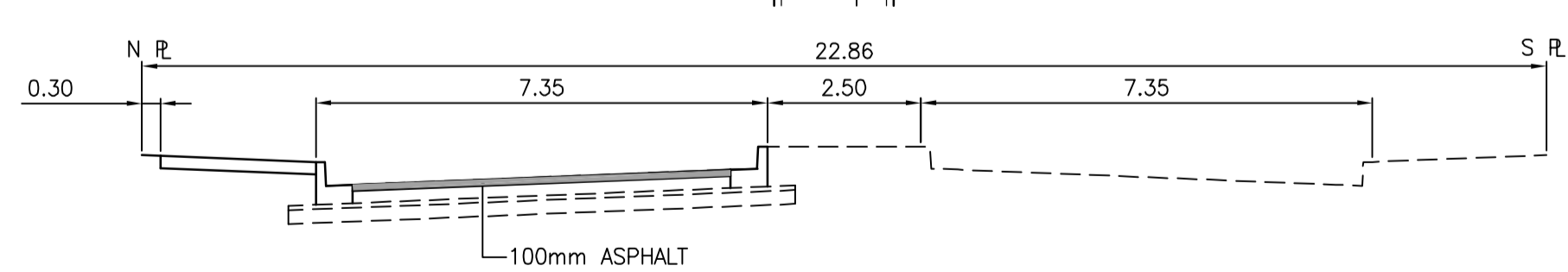
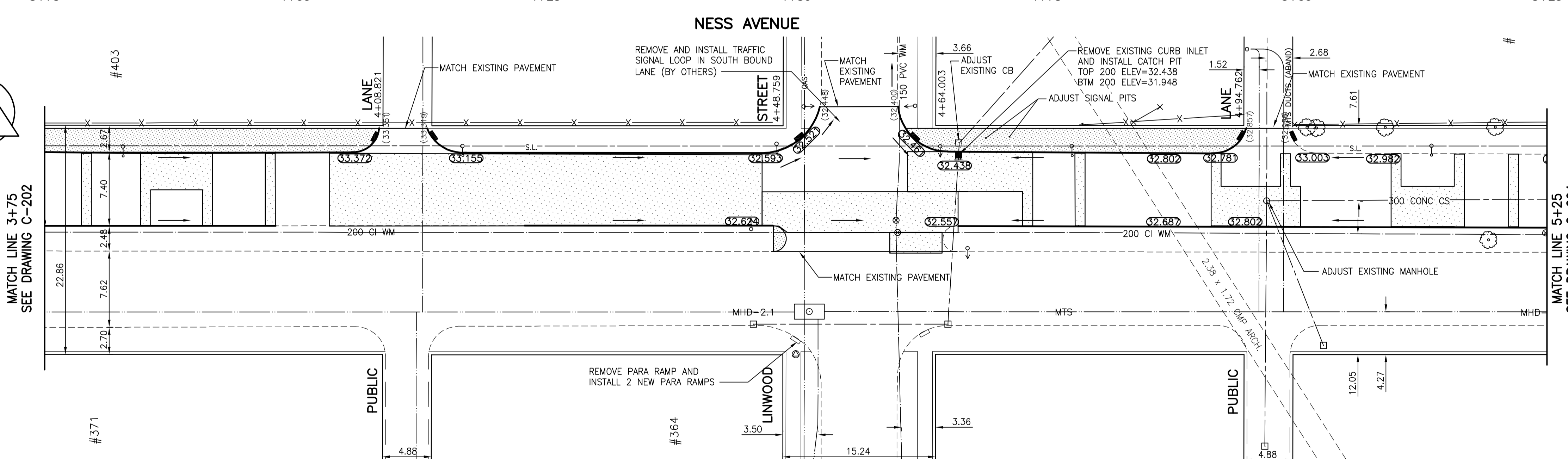
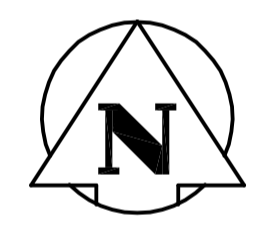


NOTE:
STATIONING ALONG NORTH BACK
OF CURB OF NESS AVENUE



BENCH MARK: 83R621 - N.E. COR. NESS AVE.
& WOODLAWN ST., TBLT. ON TOP OF 0.05m DIA.
x 2.4m IRON PIPE, ON N.L. OF NESS AVE. &
1.2m W. OF E.L. OF WOODLAWN ST.

WARNING
IF POWER EQUIPMENT OR EXPLOSIVES ARE TO BE USED
FOR EXCAVATION ON THIS PROJECT THE CONTRACTOR
MUST:
1) NOTIFY THE GAS COMPANY OF THE PROPOSED LOCATION
OF EXCAVATION.
2) TAKE PRECAUTION TO AVOID DAMAGE TO GAS COMPANY
INSTALLATIONS.
SEE PROVINCIAL REGULATION 140/92 FOR DETAILS

METRIC
WHOLE NUMBERS INDICATE MILLIMETRES
DECIMALIZED NUMBERS INDICATE METRES

EXISTING	LEGEND-PLAN	PROPOSED	EXISTING	LEGEND-PLAN	PROPOSED	EXISTING	LEGEND-PROFILE	PROPOSED
150 WM	WATERMAIN	150 WM	HYDRO	HYDRO	150 WM	WATERMAIN	150 WM	WATERMAIN
Hydrant	HYDRANT	Hydrant	M.T.S.	M.T.S.	Hydrant	HYDRANT, VALVE	Hydrant	HYDRANT, VALVE
Valve	VALVE	Valve	CONCRETE	CONCRETE	300 LDS	LAND DRAINAGE SEWER	300 LDS	LAND DRAINAGE SEWER
300 LDS	LAND DRAINAGE SEWER	300 LDS	ASPHALT	ASPHALT	250 WWS	WASTE WATER SEWER	250 WWS	WASTE WATER SEWER
250 WWS	WASTE WATER SEWER	250 WWS	SIDEWALK	SIDEWALK	Profile	PROFILE	Profile	PROFILE
Manhole	MANHOLE	Manhole	PROPERTY LINE	PROPERTY LINE	North or West Gutter	NORTH OR WEST GUTTER	North or West Gutter	NORTH OR WEST GUTTER
Catch Basin	CATCH BASIN	Catch Basin	Survey Bar	SURVEY BAR	South or East Gutter	SOUTH OR EAST GUTTER	South or East Gutter	SOUTH OR EAST GUTTER
Curb Inlet	CURB INLET	Curb Inlet	Ditch	DITCH	North or West P	NORTH OR WEST P	North or West P	NORTH OR WEST P
Junctions	JUNCTIONS	Junctions	Elevation	ELEVATION	South or East P	SOUTH OR EAST P	South or East P	SOUTH OR EAST P
Culvert	CULVERT	Culvert	Sidewalk Ramp	SIDEWALK RAMP	North or West Ditch	NORTH OR WEST DITCH	North or West Ditch	NORTH OR WEST DITCH
Gas	GAS	Gas			South or East Ditch	SOUTH OR EAST DITCH	South or East Ditch	SOUTH OR EAST DITCH

LOCATION APPROVED UNDERGROUND STRUCTURES
SUPV. U/G STRUCTURES COMMITTEE DATE
NOTE:
LOCATION OF UNDERGROUND STRUCTURES AS SHOWN ARE BASED ON THE BEST INFORMATION AVAILABLE BUT NO GUARANTEE IS GIVEN THAT ALL EXISTING UTILITIES ARE SHOWN OR THAT THE GIVEN LOCATIONS ARE EXACT. CONFIRMATION OF EXISTENCE AND EXACT LOCATION OF ALL SERVICES MUST BE OBTAINED FROM THE INDIVIDUAL UTILITIES BEFORE PROCEEDING WITH CONSTRUCTION.

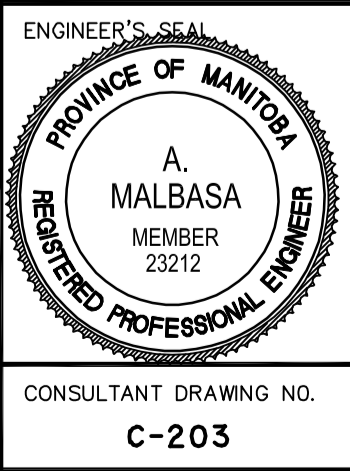
NO.	REVISIONS	DATE	BY
A	ISSUED FOR CLIENT REVIEW	06.06.07	A.M.

Stantec Consulting Ltd.
905 Waverley Street, Winnipeg, Manitoba
Tel 204-489-5900 Fax 204-453-9012

DESIGNED BY: A.M.	CHECKED BY: V.M.M.
DRAWN BY: T.G.	APPROVED BY: A.M.

HOR. SCALE: 1:250
VERTICAL: 1:10

RELEASED FOR CONSTRUCTION: _____



THE CITY OF WINNIPEG
ENGINEERING DIVISION

NESS AVENUE
BELVIDERE STREET TO FERRY ROAD
STA 3+75 TO STA 5+25
2006 ASPHALT RESURFACING

SHEET 3 OF 7
CAD FILE DRAWING NUMBER 04400c-201675.dwg
CITY DRAWING NUMBER P3270

APEGM
Certificate of Authorization
Stantec Consulting Ltd.
No. 1301 Expiry: April 30, 2007

PRELIMINARY
NOT FOR CONSTRUCTION