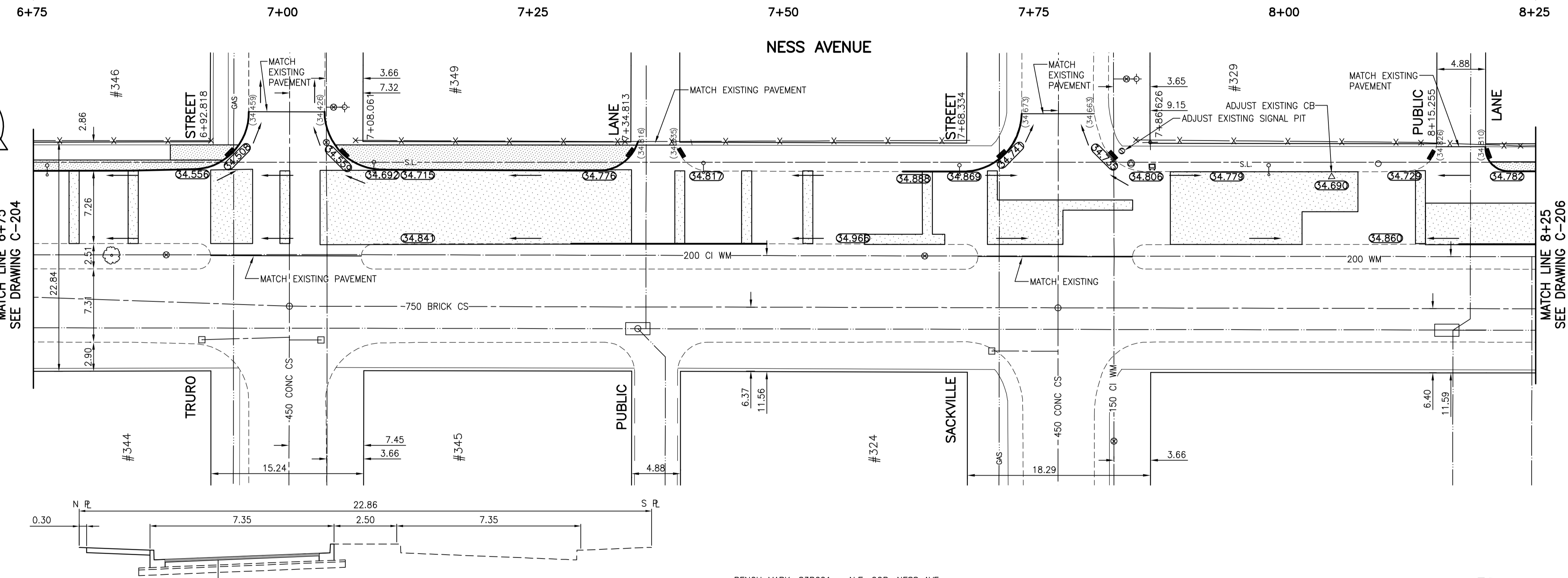


NOTE:  
STATIONING ALONG NORTH BACK  
OF CURB OF NESS AVENUE



**WARNING**

IF POWER EQUIPMENT OR EXPLOSIVES ARE TO BE USED FOR EXCAVATION ON THIS PROJECT THE CONTRACTOR MUST:  
1) NOTIFY THE GAS COMPANY OF THE PROPOSED LOCATION OF EXCAVATION.  
2) TAKE PRECAUTION TO AVOID DAMAGE TO GAS COMPANY INSTALLATIONS.  
SEE PROVINCIAL REGULATION 140/92 FOR DETAILS

**METRIC**

WHOLE NUMBERS INDICATE MILLIMETRES  
DECIMALIZED NUMBERS INDICATE METRES

BENCH MARK: 83R621 - N.E. COR. NESS AVE. & WOODLAWN ST., TBLT. ON TOP OF 0.05m DIA. x 2.4m IRON PIPE, ON N.L. OF NESS AVE. & 1.2m W. OF E.L. OF WOODLAWN ST.

**PRELIMINARY**  
NOT FOR CONSTRUCTION



EXISTING	LEGEND-PLAN	PROPOSED	EXISTING	LEGEND-PLAN	PROPOSED	EXISTING	LEGEND-PROFILE	PROPOSED
150 WM	WATERMAIN	150 WM	HYDRO	M.T.S.	150 WM	WATERMAIN	150 WM	WATERMAIN
Hydrant symbol	HYDRANT	Hydrant symbol	CONCRETE	CONCRETE	300 LDS	LAND DRAINAGE SEWER	300 LDS	LAND DRAINAGE SEWER
Valve symbol	VALVE	Valve symbol	ASPHALT	ASPHALT	250 WWS	WASTE WATER SEWER	250 WWS	WASTE WATER SEWER
Manhole symbol	MANHOLE	Manhole symbol	SIDEWALK	SIDEWALK	Profile symbol	C PROFILE	Profile symbol	C PROFILE
Catch basin symbol	CATCH BASIN	Catch basin symbol	PROPERTY LINE	PROPERTY LINE	North or West Gutter symbol	NORTH OR WEST GUTTER	North or West Gutter symbol	NORTH OR WEST GUTTER
Curb inlet symbol	CURB INLET	Curb inlet symbol	Survey bar symbol	SURVEY BAR	South or East Gutter symbol	SOUTH OR EAST GUTTER	South or East Gutter symbol	SOUTH OR EAST GUTTER
Junctions symbol	JUNCTIONS	Junctions symbol	Ditch symbol	DITCH	North or West P. symbol	NORTH OR WEST P.	North or West P. symbol	NORTH OR WEST P.
Culvert symbol	CULVERT	Culvert symbol	Elevation symbol	ELEVATION	South or East P. symbol	SOUTH OR EAST P.	South or East P. symbol	SOUTH OR EAST P.
Gas symbol	GAS	Gas symbol	Sidewalk Ramp symbol	SIDEWALK RAMP	North or West Ditch symbol	NORTH OR WEST DITCH	North or West Ditch symbol	NORTH OR WEST DITCH
Gas symbol	GAS	Gas symbol			South or East Ditch symbol	SOUTH OR EAST DITCH	South or East Ditch symbol	SOUTH OR EAST DITCH

**LOCATION APPROVED UNDERGROUND STRUCTURES**

SUPV. U/G STRUCTURES COMMITTEE DATE

NOTE:  
LOCATION OF UNDERGROUND STRUCTURES AS SHOWN ARE BASED ON THE BEST INFORMATION AVAILABLE BUT NO GUARANTEE IS GIVEN THAT ALL EXISTING UTILITIES ARE SHOWN OR THAT THE GIVEN LOCATIONS ARE EXACT. CONFIRMATION OF EXISTENCE AND EXACT LOCATION OF ALL SERVICES MUST BE OBTAINED FROM THE INDIVIDUAL UTILITIES BEFORE PROCEEDING WITH CONSTRUCTION.

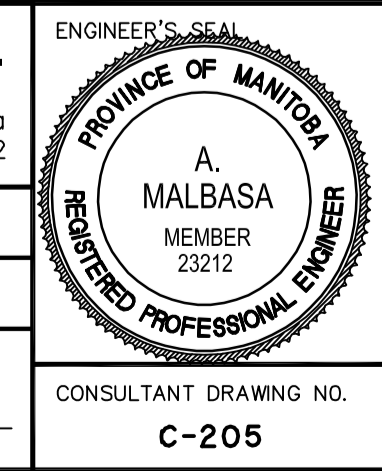
NO.	REVISIONS	DATE	BY
A	ISSUED FOR CLIENT REVIEW	06.06.07	A.M.

**Stantec Consulting Ltd.**  
905 Waverley Street, Winnipeg, Manitoba  
Tel 204-489-5900 Fax 204-453-9012

DESIGNED BY	A.M.	CHECKED BY	V.M.M.
DRAWN BY	T.G.	APPROVED BY	A.M.

HOR. SCALE: 1:250  
VERTICAL: 1:10

RELEASED FOR CONSTRUCTION: \_\_\_\_\_



**THE CITY OF WINNIPEG**  
ENGINEERING DIVISION

**NESS AVENUE**  
BELVIDERE STREET TO FERRY ROAD  
STA 6+75 TO STA 8+25  
2006 ASPHALT RESURFACING

SHEET 5 OF 7  
CAD FILE DRAWING NUMBER 04400C-201675.dwg  
CITY DRAWING NUMBER P3270

CONSULTANT DRAWING NO. C-205